

### VIRTUOSO™ WHIRLPOOL

- ❑ **7236.028WC Whirlpool featuring System II**
  - Acrylic with fiberglass reinforcement
  - EverClean® System
  - Pre-leveled tub bottom
  - Two person design with center drain and dual lumbar ends
  - Wave style grab bar
  - 2.1 HP, two speed, self-draining pump/motor with pulse feature
  - Factory installed power cord and plug
  - Ten multi-directional and flow-adjustable jets including:
    - Two Ideal-flow jets
    - Six body massage jets
    - Two recessed back-rest jets
  - Deck-mounted electronic control with 20 minute built-in timed safety shut off and Chrome Bezel
  - Three silent air volume controls
  - Quick Connect Safe-T-Heater connection system
  - Factory installed and tested whirlpool system

#### Nominal Dimensions:

1829 x 914 x 540mm  
(72" x 36" x 21-1/4")

#### Compliance Certifications -

#### Meets or Exceeds the Following Specifications:

- Underwriters Laboratories - Hydromassage Bathtubs UL 1795
- ASME A112.19.7M for Whirlpool Appliances
- ANSI Z124.1 for Plastic Bathtubs
- ASTM E162 for Flammability
- NFPA 258 for Smoke Density

American Standard whirlpools and air baths with EverClean® incorporate a patented silver-ion additive right into the circulation piping to protect the pipes from mold, mildew, algae and fungus that could cause deterioration or staining of the pipes.

SEE REVERSE FOR PRODUCT DIMENSIONS AND SPECIFICATIONS



#### To Be Specified - Required:

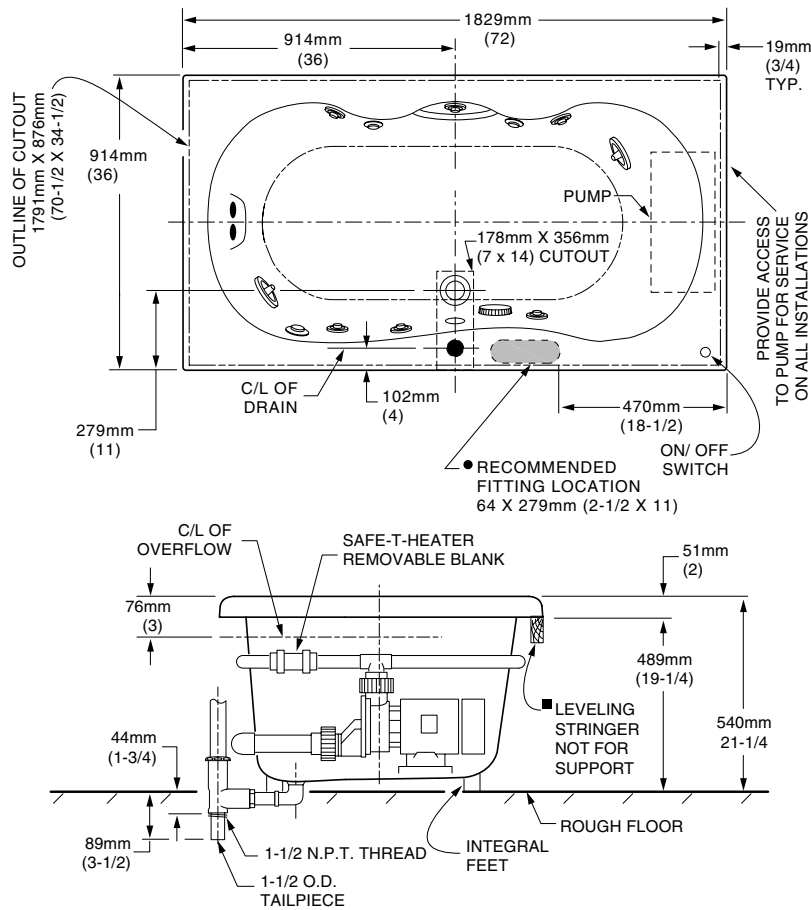
- ❑ Color:
- ❑ Bath Filler: (specify finish)
- ❑ Bath Drain: 1583.470 (specify finish)

#### To Be Specified - Optional:

- ❑ Safe-T-Heater\*: 9075.120
- ❑ Symphony 6' Apron: 0727.200 (specify color)
- ❑ Universal Tile Bead Kit: 751755-100
- ❑ System II Control Bezel: 9861.100 (specify finish)

For color/finish availability and other faucet choices, please see the Product Selector and Pricing Guide.

\* **NOTE:** the Safe-T-Heater is designed to maintain water temperature during operation. It will not heat cold water to desired bathing temperature.



GENERAL SPECIFICATIONS FOR 7236 WHIRLPOOL	
INSTALLED SIZE	72 x 36 x 21-1/4 In. (1829 x 914 x 540mm)
WEIGHT	101 Lbs. (45 Kg.)
WEIGHT w/WATER	751 Lbs. (338 Kg.)
GAL. TO OVERFLOW	78 Gal. (296 L)
WHIRLPOOL MIN. OPERATING VOL.	69 Gal. (262 L)
BATHING WELL AT SUMP	46 x 18 In. (1168 x 457mm)
BATHING WELL AT RIM	66 x 30-1/2 In. (1676 x 775mm)
WATER DEPTH TO OVERFLOW	15-3/4 In. (400mm)
FLOOR LOADING (PROJECTED AREA)	42 Lbs./Sq.Ft. (204 Kgs./Sq.m)
PTS.	25.6
CUBE (FT <sup>3</sup> )	49.4
WHIRLPOOL ELECTRICAL SPECIFICATIONS	
SYSTEM II PUMP	2.1 HP, 15.6 AMPS, 120V.

**NOTES:**

BATH CAN BE INSTALLED EITHER ABOVE OR BELOW FLOOR LINE AS PIER, ISLAND OR PENINSULA TYPE INSTALLATION. SUMP OF BATH IS SUPPORTED BY INTEGRAL FEET. NO ADDITIONAL SUPPORT REQUIRED. ENCLOSING MATERIAL BY OTHERS.

■ REFER TO INSTALLATION INSTRUCTIONS SUPPLIED WITH WHIRLPOOL, DECK MOUNTED SPOUT AND INTEGRATED BATH FILLER FOR ADDITIONAL INFORMATION.

OPTIONAL 3-WALL TILING BEAD KIT NO. 751755-100 AND APRON No. 0727.200 MUST BE ORDERED SEPARATELY.

PROVIDE SUITABLE REINFORCEMENT FOR ALL SUPPORTS.

● FITTINGS AND TWIST GRAB BAR NO. 750565-000 NOT INCLUDED AND MUST BE ORDERED SEPARATELY.

● IF INSTALLING A DECK-MOUNTED FITTING, BEFORE DRILLING ANY HOLES: CHECK FOR INTERFERENCE WITH CIRCULATING SYSTEM PIPING, DRAIN OVERFLOW, AND APRON INSTALLATION. MOUNTING HOLES DRILLED BY INSTALLER.

**ON SYSTEM II:** CONTROL MODULE TO BE MOUNTED BEHIND ACCESS PANEL, A MINIMUM OF 152mm (6) ABOVE ROUGH FLOOR.

**IMPORTANT:** Dimensions of fixtures are nominal and may vary within the range of tolerances established by ANSI Standard Z124.1 These measurements are subject to change or cancellation. No responsibility is assumed for use of superseded or voided leaflet.

## Free Manuals Download Website

<http://myh66.com>

<http://usermanuals.us>

<http://www.somanuals.com>

<http://www.4manuals.cc>

<http://www.manual-lib.com>

<http://www.404manual.com>

<http://www.luxmanual.com>

<http://aubethermostatmanual.com>

Golf course search by state

<http://golfingnear.com>

Email search by domain

<http://emailbydomain.com>

Auto manuals search

<http://auto.somanuals.com>

TV manuals search

<http://tv.somanuals.com>