

A. O. Smith Residential Gas Water Heaters

ProMax®

PROMAX® FEATURES

EXCEPTIONAL VALUE

ProMax is an economical water heater designed for households that need an exceptional performer and provides long-lasting value.

A. O. SMITH DYNACLEAN™ DIFFUSER DIP TUBE

Helps reduce lime and sediment buildup, maximizes hot water output. Made from long-lasting PEX cross-link polymer.

COREGARD™ ANODE ROD

A. O. Smith's exclusive aluminum anode has a stainless steel core, protects tank against corrosion longer versus ordinary mild steel anodes.

GREEN CHOICE™ GAS BURNER

Patented "Eco-Friendly" design reduces NOx emissions by up to 33%, complies with Southern California and Texas requirements.

PUSH-BUTTON PIEZO IGNITER

Makes lighting pilot fast and easy with one-hand push-button spark ignition.

DURABLE TAMPER-RESISTANT BRASS DRAIN VALVE

A. O. SMITH PERMAGLAS® GLASS COATING

Protects steel tank from rust.

FACTORY-INSTALLED TEMPERATURE AND PRESSURE (T&P) RELIEF VALVE

Top-mounted T&P valve available as option.

CODE COMPLIANCE: UBC, CEC, SBCC, CABO, HUD, BOCA NATIONAL CODES, ASHRAE/IES 90.1-1999 AND 2004 NAECA

DESIGN-CERTIFIED BY CSA INTERNATIONAL

According to ANS Z21.10.1 standards governing storage-type water heaters.

6-YEAR LIMITED TANK AND PARTS WARRANTY

For complete information, consult written warranty or A. O. Smith Water Products Company.

EQUIPPED WITH C3 TECHNOLOGY™

See other side.



A.O. Smith
Water Heaters

www.hotwater.com

ProMax®

MODEL NUMBER	FIRST HOUR RATING GALLONS	ENERGY FACTOR	GALLON CAPACITY	BTU INPUT PER HOUR NATURAL†	RECOVERY 90°F RISE GALLONS PER HOUR	R VALUE	DIMENSIONS IN INCHES						DRAFT HOOD OUTLET	APPROXIMATE SHIPPING WEIGHT (LBS)
							A	B	C	D	E	F		
TALL MODELS														
GCV-30	66	.62	28	40,000	41	8	59-5/8	55-1/4	16	13-3/8	8	49-7/8	3 or 4	112
GCV-40	71	.60	38	40,000	39	8	57-5/8	53-1/4	18-1/2	13-3/8	8	47-3/8	3 or 4	126
GCV-50	91	.58	50	40,000	41	8	60-7/8	56-1/2	20	13-3/8	8	50-3/8	3 or 4	160
SHORT MODELS														
GCVL-30	66	.61	30	40,000	40	8	48-1/8	43-3/4	18-1/2	13-3/8	8	36-5/8	3 or 4	122
GCVL-40	71	.59	40	40,000	41	8	51-5/8	47-1/4	20	13-3/8	8	41	3 or 4	139
GCVL-50	80	.58	50	40,000	41	16	53-1/4	48-3/4	24	13-3/8	8	43-1/2	3 or 4	168

Recovery capacity based on actual performance tests.

Water Connections – 3/4" on all models.

† Propane Gas – 37,000 BTU input.

For 10-Year Tank and 6-Year Parts Warranty, change "G" to "X" in Model Number (example: XCV-30).

Heat Trap Nipples supplied on all models except GVC-50.

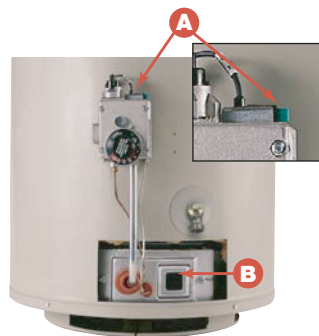
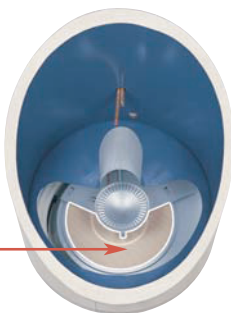


Flammable Vapor Ignition Resistant C3 Technology™ Water Heaters

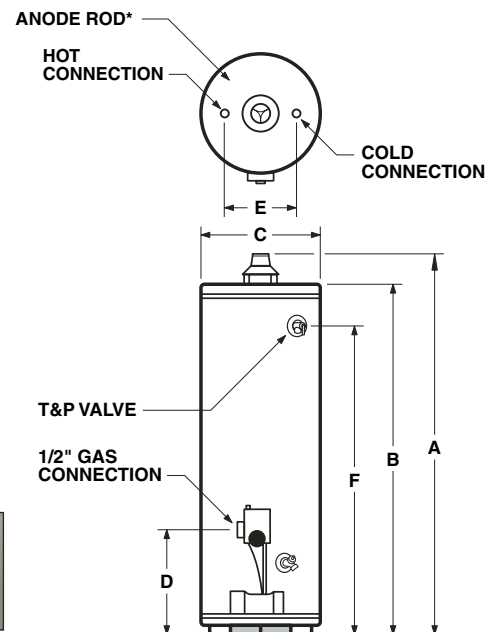
Corderite Combustion Containment (C3) design meets American National Standards Institute standards (ANS Z21.10.1) that deal with the accidental or unintended ignition of flammable vapors, such as those emitted by gasoline.

Covered by four U.S. patents, C3 Technology gas water heaters feature a sealed combustion chamber with air intake screen and a fireproof Corderite flame arrestor built into the water heater base. In addition, a thermal cutoff (TCO) device, integral with the thermocouple, is designed to shut off gas flow to the burner and pilot if poor combustion is detected.

If flammable vapors accidentally enter the combustion chamber, the Corderite flame arrestor is designed so flames burn off the top surface and cannot escape down through the arrestor.



A. Easy-to-light piezo igniter **B.** View port for easy burner inspection



*Location for optional top-mounted T&P Valve if ordered from factory.

Maximum Hydrostatic Working Pressure: 150 PSI.

A.O. Smith Water Heaters

500 Tennessee Waltz Parkway, Ashland City, TN 37015
www.hotwater.com

For Technical Information and Automated Fax Service, call 800-527-1953.
 A. O. Smith Corporation reserves the right to make product changes or improvements without prior notice.

Free Manuals Download Website

<http://myh66.com>

<http://usermanuals.us>

<http://www.somanuals.com>

<http://www.4manuals.cc>

<http://www.manual-lib.com>

<http://www.404manual.com>

<http://www.luxmanual.com>

<http://aubethermostatmanual.com>

Golf course search by state

<http://golfingnear.com>

Email search by domain

<http://emailbydomain.com>

Auto manuals search

<http://auto.somanuals.com>

TV manuals search

<http://tv.somanuals.com>