



Superior Performance 10/100/1000 Green Backbone Switching

IC39480/39240 is a high density, high performance, energy saving infrastructure grade and center office network switch. It is a full featured layer 2+ (CLI, Telnet, and Web-enable GUI) management switch. The 48/24 ports support full wire speed 10/100/1000 information transfer. The core switching engine can sustain 96/48 Gpbs non-blocking throughput for applications including enterprise backbone, data center networking, high speed server, or network aggregation.

Smart power and link

IC39480/39240 was designed to offer green technology network switching to protect the end user's long term investment from the high cost of energy. The switch automatically negotiates the best speed, duplex (full or half), and wiring (Auto-Uplink™) for optimal performance and automatically powers down to 65% energy consumption when the device is in linkdown status. All 48/24 RJ45 10/100/1000Mbps ports, 4/2 Gigabit RJ45 ports and 4/2 SFP ports are runtime swappable.

Smart Business/Office

IC39480/39240 is perfectly suited for SME, corporate edge network, small to mid-size business and workgroup network. Built around a very sophisticated single-chip architecture and latest technologies, the IC39480/39240 delivers true non-blocking, wire-speed performance on all ports with transport capability to deliver 1000Mbps bulk data, multimedia, file transfer, image, and video information in real-time.

The IC39480/39240 gives you flexible choices of either copper cable or fiber optical cable on ports G0 to G3/G1 to uplink to core or backbone network. Using SFP MiniGBIC modules you can connect the network to a fiber optical network backbone, or extend the transmission distance with the use of single-mode/multi-mode Gigabit fiber cables.

Smart Comprehensive Management

The L2+ management features tap into the IC39480/39240's on-board Command Line Interface and web configuration to enable Professional IT staff and regular users to maximize the benefits of L2+ switch capability. With additional L2+ features on ACL on IP and MAC layer, IC39480/39240 gives full control for LAN users to access the network and information.

For in-band management, choose web (HTTP), Telnet/CLI or SNMP/RMON. Through the console port, configure the switch out-of-band using a Cisco-like command line interface. Monitor traffic by port mirroring. Control system start-up by choosing from configuration files and operating firmware. Management even extends to internal and environmental conditions (startup, watchdog timers, memory buffer, thermal and more).

For larger installations, with the available IntraCore Management Utility (sold separately), swiftly manage hundreds of IntraCore switches from a single Microsoft Windows-based application. Automatically discover compatible Asanté switches and schedule tasks (firmware updates, configuration file upload/download or even reset) for one switch or a group of switches.

Interfaces

- 48/24 RJ-45 connectors for 10/100/100 BASE-T (Auto-Uplink™) on all ports, Power Saving on all ports.
- 4/2 shared SFP modules for Gigabit Ethernet Interface
- IEEE Auto Negotiation or manual configuration
- Reset button
- RS232 Console port

Status Indicators

- Power Operating status of the unit
- 2 LEDs for port link/activity, speed

Performance Specifications

- Forwarding modes: Store-and-forward
- Bandwidth: 96/48 Gbps(non-blocking)
- System Memory: 64MBytes
- 8000 MAC address with auto-learning and aging
- Less than 20 µs for 64-byte frames latency
- 4 Priority Queue with Weighted Round Robin(WRR) scheduling
- Jumbo frame: 9162 bytes
- Single-chip switch fabric non-blocking with on-chip frame buffers

Management Specifications

- IEEE 802.1x Standard Port Access Control
- IEEE 802.1D Spanning Tree Protocol
- IEEE 802.1.W Rapid Spanning Tree Protocol
- IEEE 802.1 S Multiple Spanning Tree Protocol
- IEEE 802.1Q Tag VLAN (Up to 64)
- Port-based QoS (options High/Normal)
- Port Trunking - Manual as per IEEE802.3ad Link Aggregation
- Port Mirroring
- System Log
- RFC 1157 SNMP v1, v2c
- RFC 768 UDP
- UDP Relay
- RFC 854-859 Telnet
- RFC 951 BOOTP
- RFC1757 RMON
- RFC 1643 Ethernet Interface MIB
- RFC 1493 Bridge MIB
- RFC 1534 DHCP/BOOTP
- RFC 2865/2866 RADIUS
- Port Mirroring
- RFC 2236 IGMP
- RFC 3046 DHCP/BOOP relay
- Tftp/FTP/HTTP firmware upgrade
- Web-based (IE, Mozilla, MacOS-Safari)
- Password access control

Standards Compliance

- IEEE 802.3 10BASE-T Ethernet
- IEEE 802.3u 100BASE-TX Fast Ethernet
- IEEE 802.3ab 1000BASE-T Gigabit Ethernet
- IEEE 802.3x full-duplex flow control
- IEEE 802.3z 1000BaseSX over 50 micron multi-mode fiber
- TCP/IP, CSMA/CA with ACK
- FCC Class A, CE Mark

L2+ Management Specifications

- Command Line Interface/Web /Telnet
- IEEE 802.1 Q VLAN
- IEEE 802.1p CoS
- IEEE 802.1D Spanning Tree
- IEEE 802.1v VLAN
- IEEE 802.1w Rapid Spanning Tree
- IEEE 802.1s Multiple Spanning Tree
- IEEE 802.3ad LACP
- IEEE 802.1x Port Access Authentication
- IGMP v1, v2 snooping support
- GVRP VLAN Negotiation
- ACL for L2,L3 and L4
- SSI and SSH
- TACACS+ Client Authentication
- IGMP Snooping and IGMP Proxy

Network Standards

- IEEE802.3i 10Base T
- IEEE802.3u 100Base TX
- IEEE802.3z 1000BASE-X
- IEEE802.3ab 1000BASE-T
- IEEE802.3x flow control

Physical

- Dimensions: 430 x 350 x 44 (mm), 16.9 x 13.8 x 1.7 (inch) (IC39480) (WxDxH) 430 x 250 x 44 (mm), 16.9 x 10 x 1.7 (inch) (IC39240)
- Weight: 4.1 kg(9 lbs) (IC39480) 2.8kg(6 lbs)(IC39240)

Environmental Specifications

- Power: Internal, auto-switching, 100 ~ 240 VAC, 50-60 Hz
- Operating Temperature: 0°C to 40°C (32°F to 104°F)
- Storage temperature: -20° to 70° C (-4° to 158°F)
- Relative Humidity: 10% to 90%, non-condensing
- Storage humidity: 95% maximum, non-condensing

System Requirements

- Category 5, 6 Network cable
- Single Mode, Multimode fiber
- Window IE browser, Netscape, Mozilla, MacOS Safari.

Modules

- Asante SFP1000SX
- Asante SFP1000LX
- Asante SFP1000LZ

Security

- 802.11x RADIUS Authentication
- Management Access Control List

Package Content

- 48-port Giga + 4 Giga SFP L2+ Switch(IC39480)
- 24-port Giga + 2 Giga SFP L2+ Switch(IC39240)
- Power cord
- Rack-mount kit
- Switch CD
- Warrant/Support Information card

Warranty

- Asante Lifetime Warranty+

Asante Service

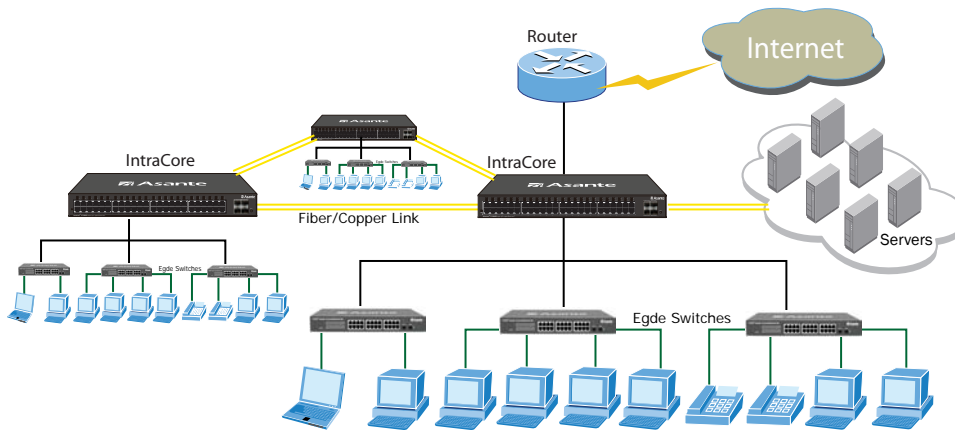
- Free 24x7 email contact, Mon-Fri on Call.

+ This warranty is exclusive and is limited to the original end user purchaser with the original warranty card only. This warranty shall not apply to secondhand products or to products that have been subjected to abuse, misuse, dropping, abnormal electrical or environmental conditions, lightning, water, or any condition other than what can be considered normal use. IC39480 (99-00829)

asante.com/products/switches

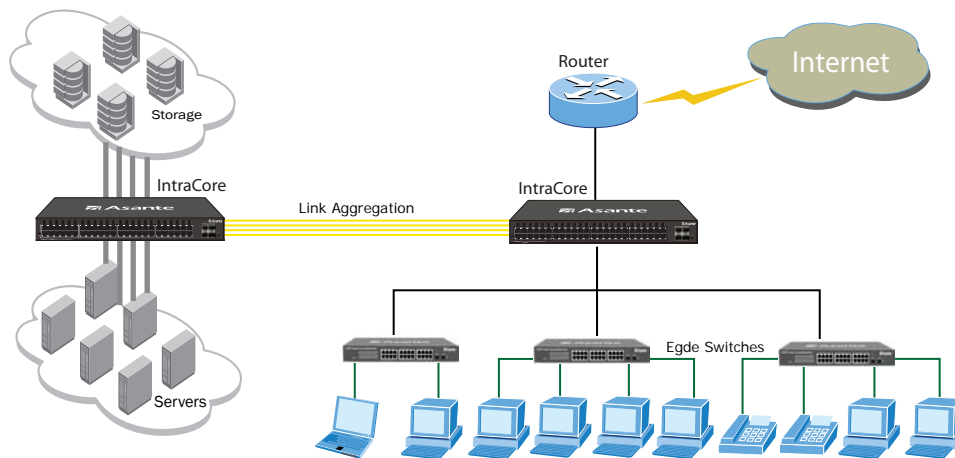
Infrastructure Switch

With a powerful 96Gigabits per second of non-blocking switch fabric, the IC39480/39240 offers two levels of infrastructure backbone network capabilities. These are highly scalable network core components which can easily aggregate the edge network switch into a business or group, and retain the greatest security management structure for network manager.



Data Server Switch

Network Server, data centers require a high traffic access via a reliable, high throughput network switch. The IC39480 can provide both features and maintain low power consumption for today's expensive energy costs. The Gigabit switch could be a center hub to those data centers and also provide access to the core.



47709 Fremont Blvd, Fremont, CA 94538 USA · Phone 408.435.8388 · Website www.asante.com

© 2008 Asante - a Division of UIC Corporation. All rights reserved. Asante and FriendlyNET are trademarks of UICUSA. All other names may be trademarks or registered trademarks of their respective owners. Specifications subject to change without prior notice.

Free Manuals Download Website

<http://myh66.com>

<http://usermanuals.us>

<http://www.somanuals.com>

<http://www.4manuals.cc>

<http://www.manual-lib.com>

<http://www.404manual.com>

<http://www.luxmanual.com>

<http://aubethermostatmanual.com>

Golf course search by state

<http://golfingnear.com>

Email search by domain

<http://emailbydomain.com>

Auto manuals search

<http://auto.somanuals.com>

TV manuals search

<http://tv.somanuals.com>