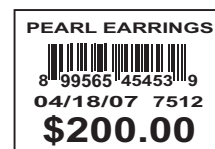
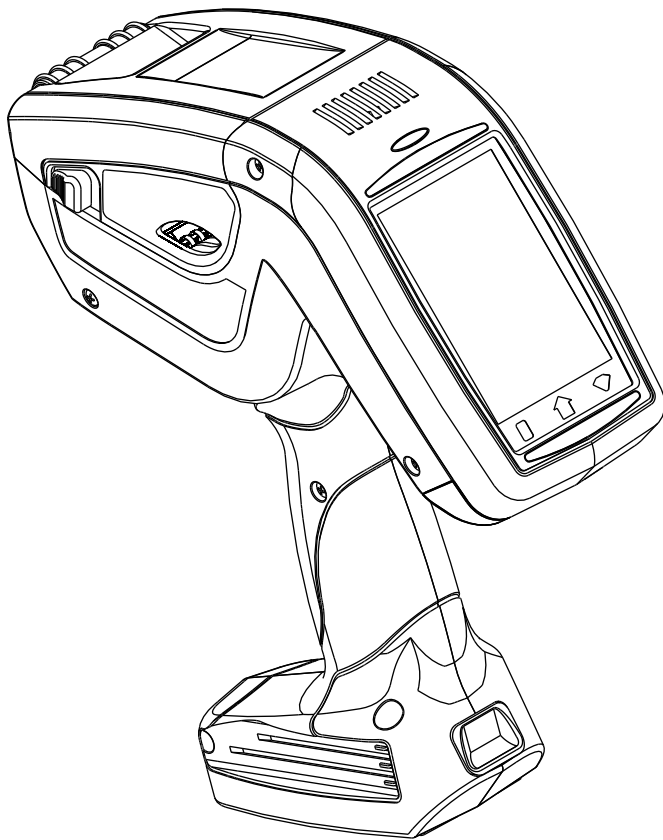




System Administrator's Guide

Pathfinder® 6057
Printer



Each product and program carries a respective written warranty, the only warranty on which the customer can rely. Avery Dennison reserves the right to make changes in the product, the programs, and their availability at any time and without notice. Although Avery Dennison has made every effort to provide complete and accurate information in this manual, Avery Dennison shall not be liable for any omissions or inaccuracies. Any update will be incorporated in a later edition of this manual.

©2011 Avery Dennison Corporation. All rights reserved. No part of this publication may be reproduced, transmitted, stored in a retrieval system, or translated into any language in any form by any means, without the prior written permission of Avery Dennison.

Trademarks

Avery Dennison® and Pathfinder® are trademarks of Avery Dennison Corporation.
Microsoft and Windows are trademarks of Microsoft Corporation.
Summit Data Communications is a trademark of Summit Data Communications, Inc.
Bluetooth and the *Bluetooth* logos are trademarks owned by *Bluetooth* SIG, Inc., U.S.A.
All other brand and product names are trademarks of their respective holders.

Avery Dennison
170 Monarch Lane
Miamisburg, OH 45342



TABLE OF CONTENTS

Introduction	1-1
Using This Manual.....	1-1
Audience	1-1
Using the Display	1-1
Reading the Task Bar	1-2
Using the Input Panel	1-2
Entering Data Using the Input Panel	1-3
Administrative Tools	2-1
Setting the Date and Time.....	2-1
Setting the Time Zone	2-2
Setting the Internet Time.....	2-2
Using Asset Tracking.....	2-3
Editing Owner Data	2-3
Importing/Exporting Asset Tracking Files.....	2-4
Printing an Asset Tracking Label	2-4
Changing the Power Properties.....	2-4
Changing the Input Panel Options.....	2-6
Using the System Lockdown Option.....	2-8
Locking the System	2-8
Unlocking the System	2-8
Locking the USB Ports.....	2-9
Changing the PC Connection.....	2-9
Adding Notification Events	2-10
Testing the Speaker	2-12
Viewing the System Properties	2-12
Viewing the Printer's Software Version	2-13
Resetting the Printer	2-13
Soft Reset Using the Start Menu.....	2-13
Hard Reset Using the Power Button	2-13
Bootloader & Factory Default Using the Control Panel	2-14
Using the Summit Client Utility	3-1
Finding a Network	3-2
Creating a Profile.....	3-3
Setting a Password.....	3-4
Using Bluetooth	4-1
Making the Printer Discoverable	4-1
Pairing the Printer	4-1
Using Wavelink Avalanche	5-1
Starting the Utility	5-1
Closing the Utility.....	5-1

Using Printer Diagnostics	6-1
Error Reporting	6-1
Accessing Printer Diagnostics	6-2
Checking Machine Totals	6-2
Printing Diagnostic Labels	6-3
Checking the Stock Registration	6-5
Testing the Sensors	6-6
Testing the Printhead	6-8
Configuring the Scanner	7-1
Setting Scanner Options	7-1
Setting a Tone for Good or Bad Scans	7-3
Enabling Specific Bar Codes	7-4
Configuring UPC/EAN Bar Codes	7-4
Configuring Code 39 Bar Codes.....	7-6
Configuring Code 128 Bar Codes	7-6
Configuring I 2 of 5 Bar Codes	7-7
Configuring MSI Bar Codes	7-7
Configuring Codabar Bar Codes	7-8
Configuring Code 93 Bar Codes.....	7-8
Configuring D 2of5 Bar Codes	7-9
Configuring RSS Bar Codes	7-9
Scannable Bar Codes vs. Printable Bar Codes	7-10
Using Scanner Diagnostics.....	7-11
Setting 2D Scanner Options (Factory Installed Option)	7-11
Configuring PDF417	7-11
Configuring Data Matrix	7-12
Configuring Maxicode	7-13
QR Code.....	7-13
Index	A-1

INTRODUCTION

The Pathfinder® 6057 printer prints, scans bar codes, collects data, and communicates with other devices. The printer operates on a Microsoft® Windows-based CE platform.

Note: Before you begin, review the safety information in the *Regulatory Compliance* document included with your printer.

Using This Manual

Following is a summary of the contents of this manual.

	Chapter	Contents
1	Introduction	Information you should know before using the printer.
2	Administrative Tools	Using the control panel to set various options, including asset tracking and system lockdown.
3	Wireless Configuration	Setting communications between your wireless printer and network.
4	Printer Diagnostics	Using printer diagnostics to print test labels, check sensors, view inches printed, etc.
5	Scanner Configuration	Configuring the scanner to accept certain bar codes and using scanner diagnostics.

Audience

This manual is for the System Administrator who configures the printer and scanner and performs diagnostics.

A *Quick Reference* ships with each printer. Additional documentation can be found on our Web site.

Using the Display

The printer has a touch screen display, similar to a hand held computer. Touch the screen to select the option you want.

Note: Only use YOUR FINGER on the screen. Pens and other items can cause damage and do not work. Use distilled water and a soft cloth to clean the screen. **Do not use household cleaners.**



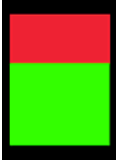
The display also uses a feature called “gesturing.”

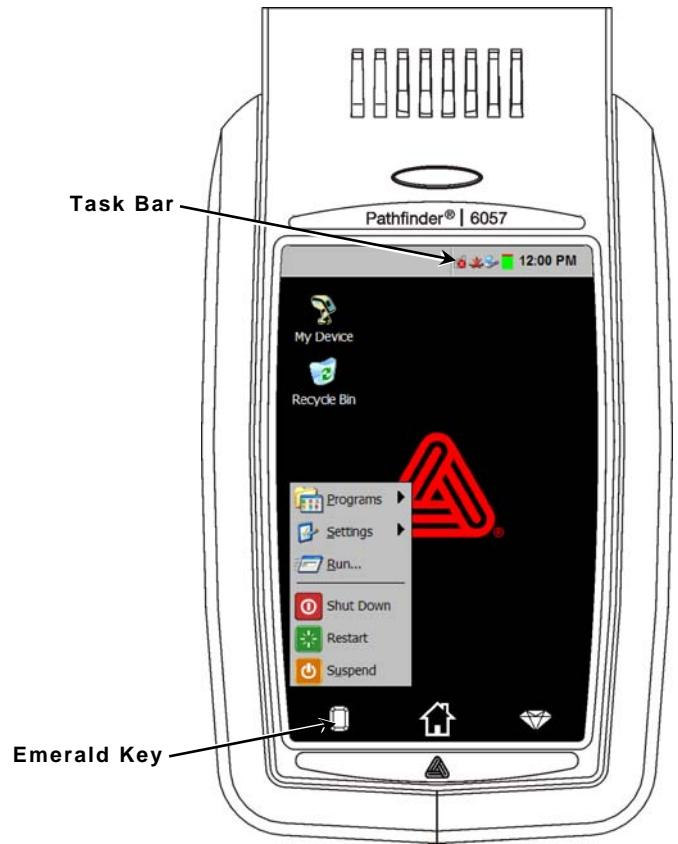
- ◆ When you see a scroll bar, quickly swipe your finger across the display to scroll.
- ◆ You may be able to use a gesture for a **Space**, **Backspace**, **Shift**, or **Enter** key when entering data. See “[Changing the Input Panel Options](#)” for more information.

To Access the Start Menu, touch the Emerald key.

Reading the Task Bar

The Task Bar has the following indicators:







Icon	Description
	Wired/Wireless Connection
	Wireless Signal Strength
	Battery Status



Using the Input Panel



To access the printer's input panel, touch the Diamond key.

Key(s)	Description
	Accepts data or menu selection.
	Closes any open windows.
 or 	Displays upper-case or lower-case alphabetic input panel.
	Displays numeric input panel.
	Displays special character and symbol input panel.

Entering Data Using the Input Panel

When prompted to enter data:

1. Touch the field where you need to enter data and then touch the **Diamond** key to show the input panel.
2. Enter the data. Move the input panel out of the way or touch the **Diamond** key to hide the input panel.

Note: You do **not** need to press **Enter** on the input panel to save your data.

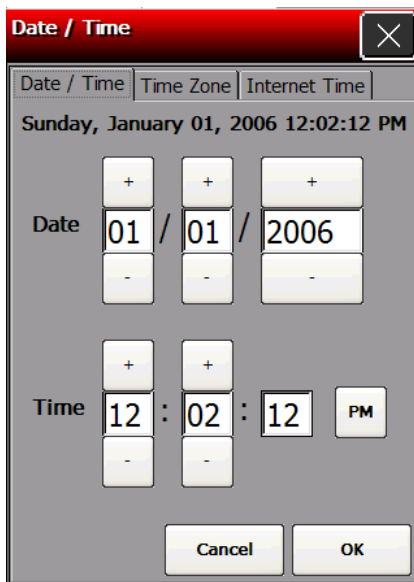
3. Touch the next field where you need to enter data.
4. If necessary, touch the **Diamond** key to show the input panel. Enter the data.
5. When finished entering data, touch the **Diamond** key to hide the input panel.

Use these tools to

- ◆ set the date and time, time zone, and Internet time
- ◆ identify and track your printers
- ◆ change the Power and Input Panel properties
- ◆ lock the system to restrict user access
- ◆ change the PC connection
- ◆ add user notification events
- ◆ test the speaker
- ◆ view the System properties and Software version.

Setting the Date and Time

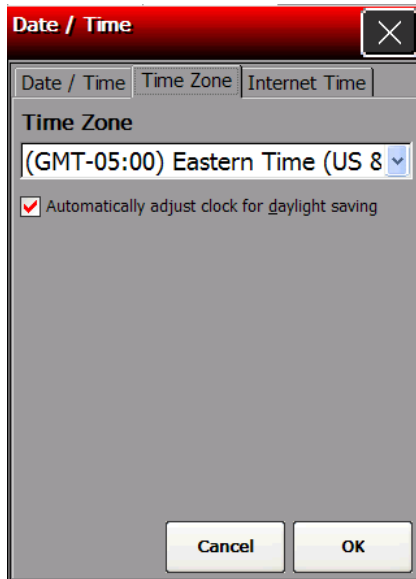
1. Touch the Emerald key to access the Start Menu, select Settings, Control Panel, and Date/Time Properties.
2. Touch the + or – buttons to set the correct date and time. Touch the AM/PM button to toggle between the two settings.



3. Touch **OK**.

Setting the Time Zone

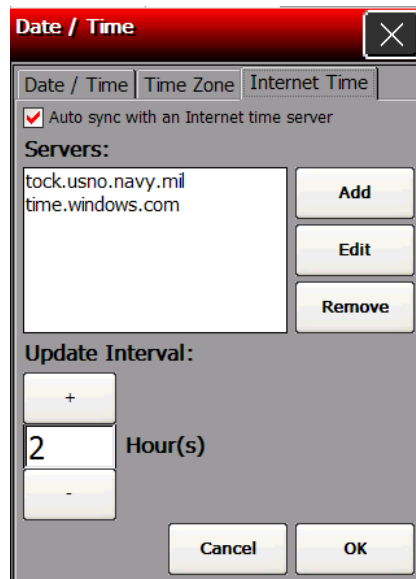
1. Touch the Emerald key to access the Start Menu, select Settings, Control Panel, and Date/Time Properties.
2. Touch the **Time Zone** tab.



3. Choose your time zone from the drop down list.
4. Place a checkmark in the box if you want your printer's time setting to automatically adjust when daylight savings changes occur.
5. Press **OK**.

Setting the Internet Time

1. Touch the Emerald key to access the Start Menu, select Settings, Control Panel, and Date/Time Properties.
2. Touch the **Internet Time** tab.



3. Place a checkmark in the box if you want your printer to automatically sync with an Internet time server.

4. Touch Add to add a new Internet time server.
5. Enter the server address. Touch the Diamond key to show the input panel if it does not automatically appear.
6. Touch **OK**.
7. Touch the **+** or **-** buttons to select the interval at which your printer corresponds with the server for updates.
8. Touch **OK**.

Note: Touch **Edit** to make changes to an existing server address. Touch **Remove** to remove an address from the list of servers.

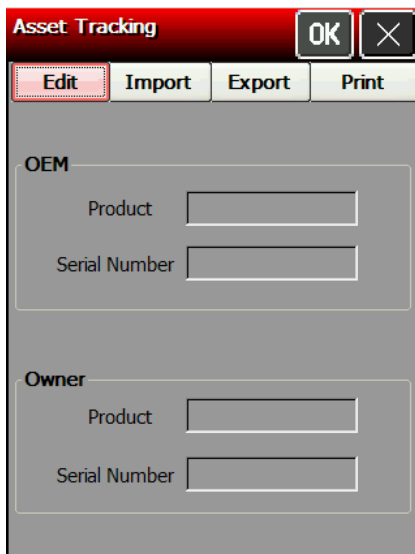
Using Asset Tracking

Asset tracking contains the manufacturer's product ID and serial number, and the owner's product ID and serial number. A password is required to edit this data. You can print an asset tracking label that contains the product IDs and serial numbers for your records.

Editing Owner Data

Review how to enter data using the input panel before continuing. See "[Entering Data Using the Input Panel](#)" for more information.

1. Touch the Emerald key to access the Start Menu, select **Settings, Control Panel, and Asset Tracking**.



The screenshot shows the 'Asset Tracking' application window. At the top, there is a red title bar with the text 'Asset Tracking' and two buttons: 'OK' and 'X'. Below the title bar, there is a row of four buttons: 'Edit', 'Import', 'Export', and 'Print'. The 'Edit' button is highlighted with a red border. Below the buttons, the window is divided into two sections: 'OEM' and 'Owner'. Each section contains two input fields: 'Product' and 'Serial Number'.

2. Touch **Edit**.
3. Enter the password. The default password is **123321**. Touch the Password window and touch **OK**.
4. Select the Owner **Product ID** field.
5. Use the input panel or scan a bar code to enter a new Product ID.
6. Select the Owner **Serial Number** field.
7. Use the input panel or scan a bar code to enter a new Serial Number.

Note: You can only edit owner data. The OEM Product ID and Serial Number cannot be changed.

8. Touch **OK**.

Importing/Exporting Asset Tracking Files

Use Import to retrieve an asset tracking backup file (.XML extension) from your PC or server. Use Export to create a backup file (.XML extension) of the asset tracking information.

Export saves the .XML file on the root of the printer. Touch the Device icon on the desktop and look for **AssetTracking.XML**. Any time you touch Export, *this file is overwritten*. A sample asset tracking file is shown below:

```
<?xml version="1.0" ?>
<AssetTracking>
<OEMProductID>M06057</OEMProductID>
<OEMSerialNumber>11050056</OEMSerialNumber>
<OwnerProductID>M06057</OwnerProductID>
<OwnerSerialNumber>11050056</OwnerSerialNumber>
</AssetTracking>
```

1. Touch the Emerald key to access the Start Menu, select **Settings, Control Panel, and Asset Tracking**.
2. Touch **Import** to retrieve a backup file from your PC or server.
3. Enter the password. The default password is **123321**. Touch the Password window and touch **OK**.
4. Touch **Export** to create a backup file of the new data on your PC or server, then touch **OK**. Export saves the **AssetTracking.XML** file on the root of the printer.

Printing an Asset Tracking Label

1. From the Asset Tracking window, touch **Print**.

A label prints with the OEM and Owner Product IDs and Serial Numbers and their corresponding bar codes.

Note: You may want to keep this label in a safe place for future reference.

2. Touch **OK** to exit the application and touch **X** to close the Control Panel.



Asset Tracking Label

Changing the Power Properties

To conserve battery power, you may want to change the power properties settings. The backlight dims, turns off, or you can suspend the printer after a specified amount of user inactivity time.

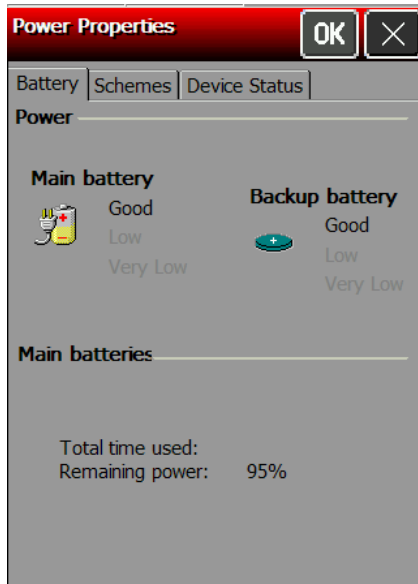
Note: The timer resets between each power mode. See the following example:

Mode	Setting	Current Time is 9:00
User Idle	2 minutes	9:02 – printer enters User Idle mode
System Idle	5 minutes	9:07 – printer enters System Idle mode
Suspend	30 minutes	9:37 – printer enters Suspend mode

There are several ways to “wake up” the printer:

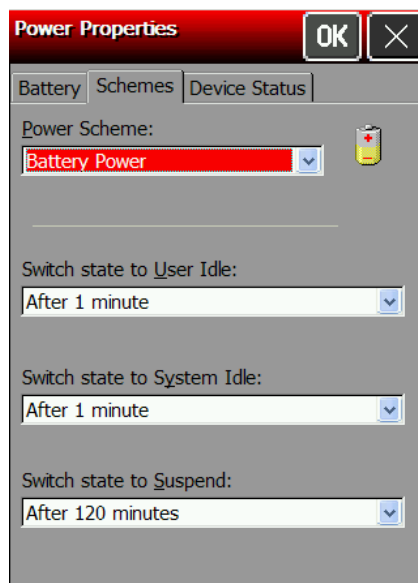
- ◆ touch the display (first touch “wakes up” the printer; touch the display again to perform the action shown on the display, for example, **OK**.) This is recommended for User or System Idle mode.
- ◆ touch a key (first touch “wakes up” the printer; touch the key again to perform the key’s action – for example, touching the **Home** key.) This is recommended for User or System Idle mode.
- ◆ press the trigger (also activates the scanner).
- ◆ press the power button. This is the only way to “wake up” the printer when the printer is in Suspend mode.

1. Touch the Emerald key to access the Start Menu, select **Settings**, **Control Panel**, and **Power**.



Three tabs appear: Battery, Schemes, and Device Status. The Battery tab displays the current power levels for the main battery and backup battery. The Device Status tab displays the current power levels of various devices.

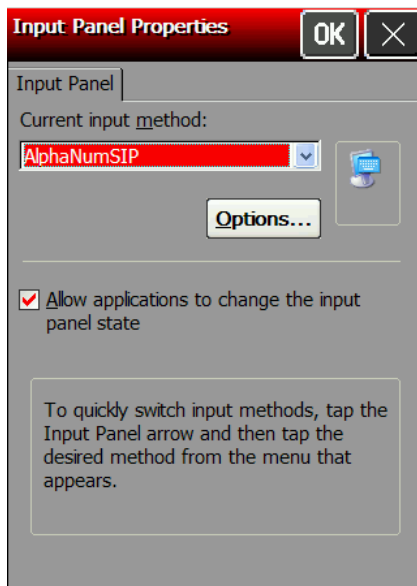
2. Touch the **Schemes** tab to change the User and System Idle settings.



3. Select the **Power Scheme** to change: Battery Power or AC Power. AC Power is used when the printer is connected to the 6054 Network Control Module with the 6055 Docking Module.
4. Select the **User Idle** time. In User Idle time, the display goes dim after the specified amount of user inactivity time.
5. Select the **System Idle** time. In System Idle time, the display turns off after the specified amount of user inactivity time, but the printer remains on. The LED may begin blinking, depending on how User Notifications events are set. See "[Adding Notification Events](#)" for more information.
6. Select the **Switch state to Suspend** time. In Suspend mode, the printer is at low power usage after the specified amount of user inactivity time. Press the power button to turn on the printer.
7. Touch **OK** to save the settings and return to the Control Panel.

Changing the Input Panel Options

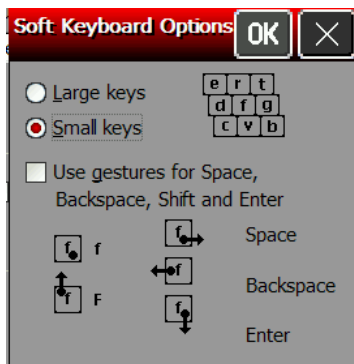
1. Touch the Emerald key to access the Start Menu, select **Settings, Control Panel, and Input Panel**.

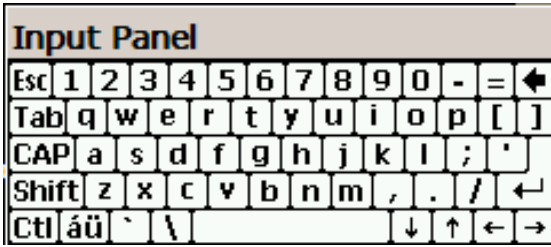


2. Select the **Current input method**: AlphaNumSIP or Keyboard.
3. Touch **Options**.

Keyboard Options

1. Select Large or Small keys.





Large Keys

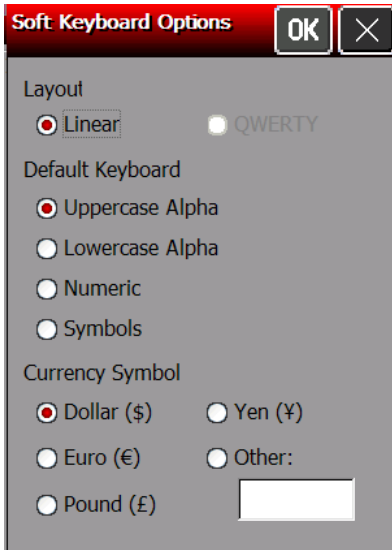


Small Keys

2. Check if you want to use gestures for **Space**, **Backspace**, **Shift** and **Enter** when using the Keyboard input panel.
3. Touch **OK** to return to the Input Panel Properties window.
4. Check to allow applications to change the input panel state.
5. Touch **OK** to return to the Control Panel.

AlphaNumSip Options

1. Select the Default Keyboard you want.
2. Select the Currency Symbol you want.



3. Touch **OK** to return to the Input Panel Properties window.
4. Check to allow applications to change the input panel state.
5. Touch **OK** to return to the Control Panel.

Using the System Lockdown Option

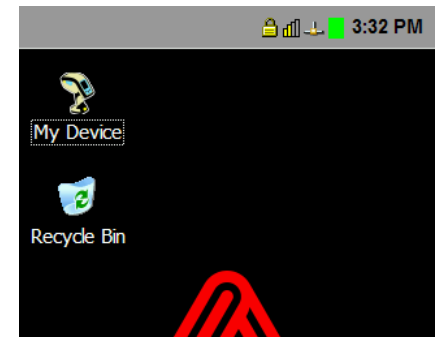
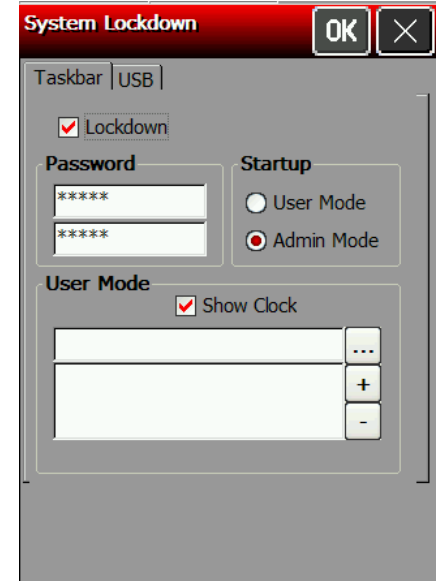
The System Lockdown option password protects access to the Start Menu or any unspecified applications. The System Administrator selects which applications are accessible when the system is locked. To make an application accessible, add it to the list. Applications not listed are not accessible. Review how to enter data using the input panel before continuing. See [“Entering Data Using the Input Panel”](#) for more information.

Locking the System

1. Touch the Emerald key to access the Start Menu, select **Settings, Control Panel, and System Lockdown**.
2. Check **Lockdown** under the **Taskbar** tab.
3. Select the **Startup Mode** for the user or administrator.
To disable the clock display on the taskbar, uncheck **Show Clock**.
4. Enter and confirm a password. The default password is 12321.

Note: Make a note of the password if you change it. You must have the current password to unlock the system.

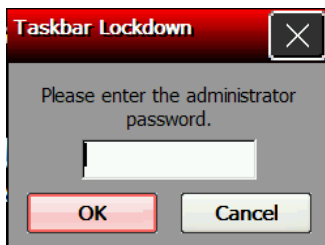
5. Touch the browse button (...) and select an application the user has permission to run.
6. Touch **OK**. The selected application path appears in the browse field.
7. Touch **+** (plus sign). The application appears in the list.
To remove an application, select it and touch **-** (minus sign).
8. When you are finished, touch **OK**.
9. A small padlock icon shows in the task bar. When you touch the Emerald key, the printer prompts you to enter the administrator password.



Unlocking the System

To unlock the system:

1. Touch the Emerald key. This opens a prompt for the administrator password. Touch the Diamond key to show the input panel if it does not automatically appear.
2. Enter the administrator password.



3. Touch **OK**.
4. Touch the Emerald key to access the Start Menu, select **Settings, Control Panel, and System Lockdown**.
5. Uncheck **Lockdown** under the **Taskbar** tab and make any other lockdown changes. Touch **OK** when finished.

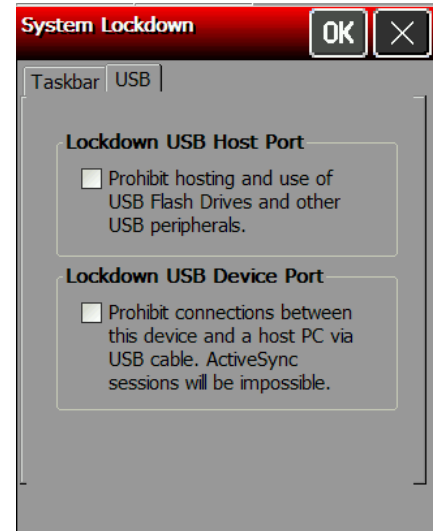
Locking the USB Ports

The printer contains two USB ports. The smaller USB port is the Device Port, which is used to connect the printer to a PC. The larger port is the Host Port, which is used to transfer data with a flash drive.

1. Touch the Emerald key to access the Start Menu, select **Settings, Control Panel, and System Lockdown**.
2. Touch the **USB** tab.
3. You can lockdown the USB Host Port and the USB Device Port by checking the boxes.

Note: If Lockdown USB Device Port is already selected, you may have disabled “Enable direct connections to the desktop computer” from the PC Connection Properties window. See [“Changing the PC Connection”](#) for more information.

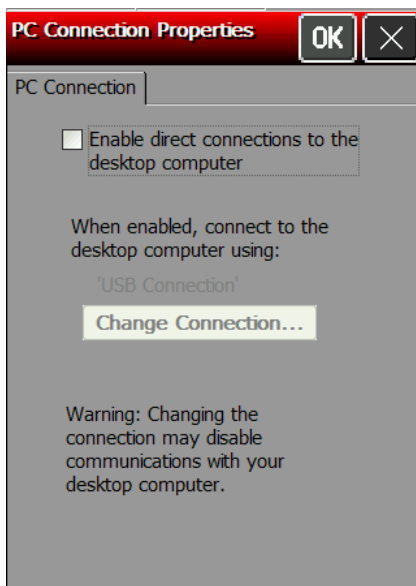
4. When you are finished, touch **OK**.
5. A small padlock icon shows in the task bar. When you touch the Emerald key, the printer prompts you to enter the administrator password.



Changing the PC Connection

To enable or disable direct connections to the desktop computer (printer), follow these steps:

1. Touch the Emerald key to access the Start Menu, select **Settings, Control Panel, and PC Connection**.



2. Check the box to enable direct connections to the desktop computer (printer). If you disable this option, it enables “Lockdown USB Device Port” on the System Lockdown USB tab. See [“Locking the USB Ports”](#) for more information.
3. Touch **Change Connection** to change the USB connection.

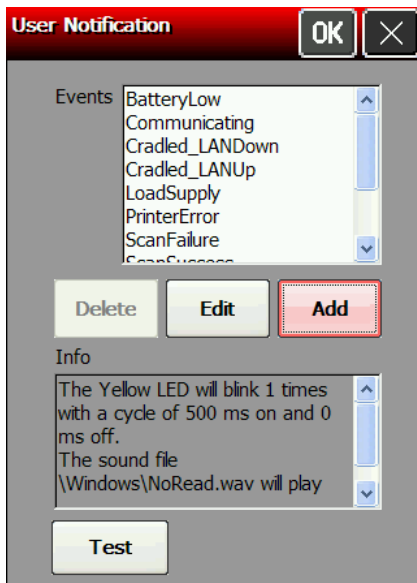


4. Select how to connect to the printer.
5. Touch **OK** to return to the PC Connection properties window.
6. Touch **OK** to return to the Control Panel.

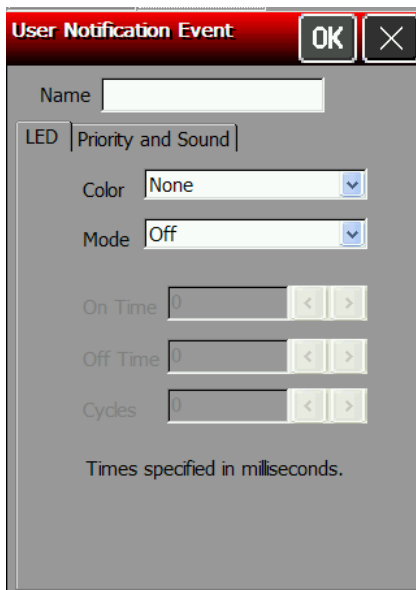
Adding Notification Events

Review how to enter data using the input panel before continuing. See "[Entering Data Using the Input Panel](#)" for more information.

1. Touch the Emerald key to access the Start Menu, select **Settings, Control Panel, and User Notification**.



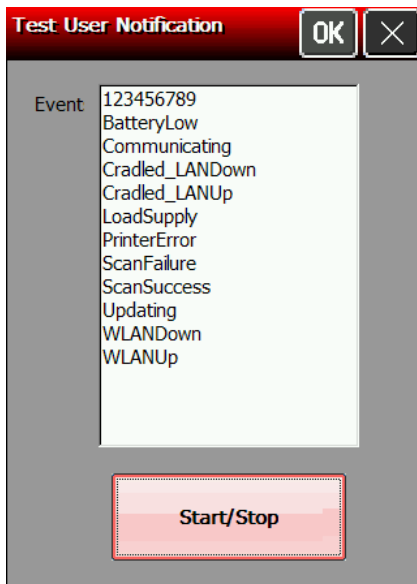
2. Touch **Add**.
3. Touch the Name box. Touch the diamond key to display the input panel if it does not automatically appear. Enter the name. Touch the diamond key to hide the input panel.
4. Set the LED settings (Color, Mode, ON/OFF Time and Cycles).



5. Touch the **Priority and Sound** tab and set the Priority and select the Audio File, if necessary.



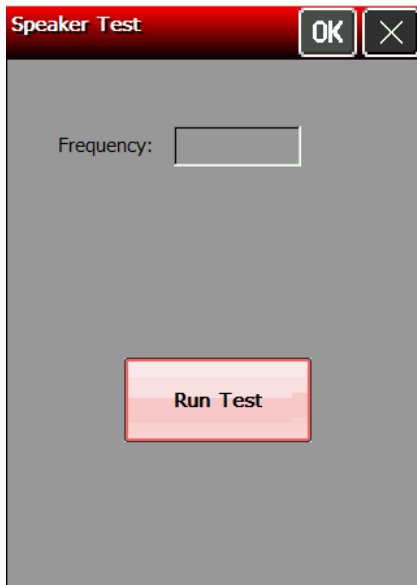
6. Touch **OK**.
7. Touch **Test**.
8. Select the new Event (shown as DATA WAIT in the screen below).



9. Touch **Start/Stop**. The LED and sound settings play for the selected notification.
10. Touch **Start/Stop** to stop the test.
11. Touch **OK** to return to the User Notification window.
12. Touch **OK** to return to the Control Panel.

Testing the Speaker

1. Touch the Emerald key to access the Start Menu, select **Settings**, **Control Panel**, and **Speaker Test**.



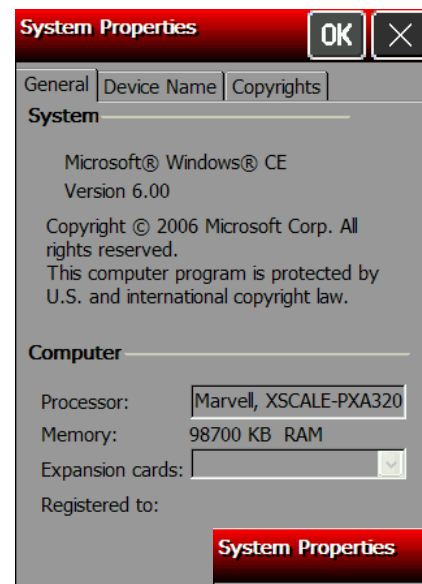
2. Touch **Run Test**. While the test is performed, you hear a tone sounded at each frequency (200 Hz – 6400 Hz). The frequencies are displayed for each tone as they are played.
3. Touch **OK** to return to the Control Panel.

Viewing the System Properties

Use the System window to change the device's name and/or description and to view Operating System information, etc.

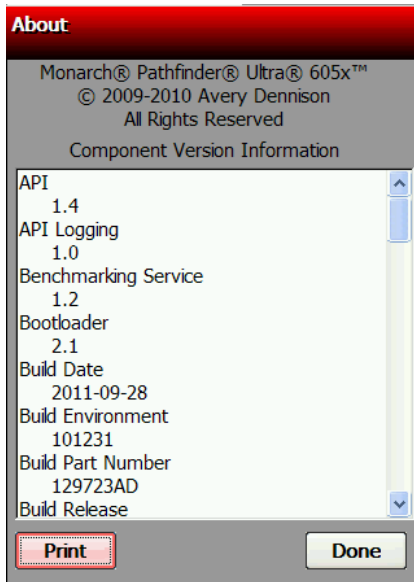
Review how to enter data using the input panel before continuing. See "[Entering Data Using the Input Panel](#)" for more information.

1. Touch the Emerald key to access the Start Menu, select **Settings**, **Control Panel**, and **System**.
Three tabs appear: General, Device Name, and Copyrights.
2. Touch the **Device Name** tab to change the device's name.
3. Touch the Device name box. Touch the diamond key to display the input panel if it does not automatically appear. Enter the Device name. Use **Bsp** on the input panel to clear any previously entered information.
4. Touch the Device description box.
5. Enter the Device description. Use **Bsp** on the input panel to clear any previously entered information. Touch the diamond key to hide the input panel.
6. Touch **OK** when finished.



Viewing the Printer's Software Version

1. To view information about the printer including API version, print engine firmware version, etc. touch the **Home** key and then Select **About**.
2. You see the About window. Use your finger to scroll through the information. Touch **Print** to print labels containing this information.



3. Touch **Done** when finished. You return to the desktop.

Resetting the Printer

There are three ways to reset the printer; Reset, Reset to Bootloader, and Factory Reset.

Soft Reset Using the Start Menu

The printer is powered off and then back on. Files in the Temp folder are deleted.

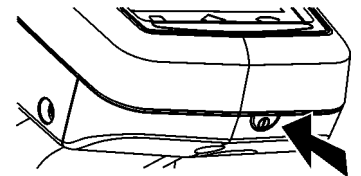
To perform a soft reset:

1. With the printer on, touch the **Emerald** key.
2. Select **Restart**.

Hard Reset Using the Power Button

Erases all data or files stored in the Temp directory. All other files stored or installed on the printer are safe from a hard reset.

1. With the printer on, press and hold the power button for approximately eight seconds.
2. Press the power button again. The printer deletes files in the Temp directory.



Bootloader & Factory Default Using the Control Panel

The boot option within the printer's control panel allows you to perform one of three different functions.

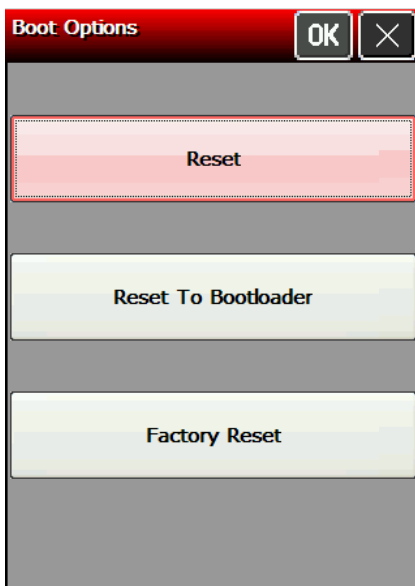
Reset – Interrupts the CPU and reboots the printer (soft reset).

Reset to Bootloader – Reboots the printer and pauses at the bootloader screen. This option is only used when installing a new Core Operating System. This option is password protected; contact Service to use this option.

Factory Reset – Reboots the printer and erases everything on the printer except for the Core Operating System. All user installed printer files or applications must be re-installed. Files previously stored or transferred to the optional MicroSD card are not deleted; they will remain after a Factory Default. This option is password protected; contact Service to use this option.

To access the Boot option:

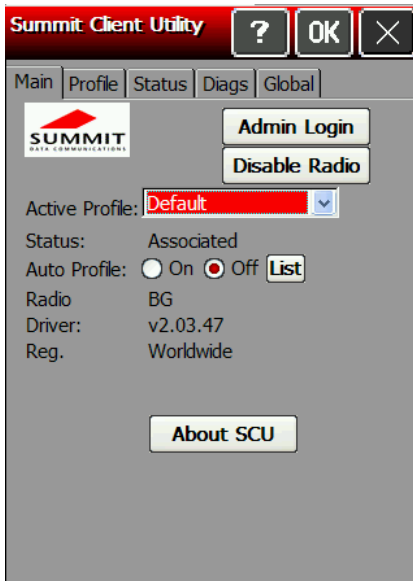
1. Touch the Emerald key to access the Start Menu, select **Settings**, **Control Panel**, and **Boot**.



Use this chapter to configure the 802.11b/g wireless (radio) card settings.

The Summit SDC-CF10G1 802.11g wireless card operates at speeds of up to 11Mbps in 802.11b mode and 54Mbps in 802.11g mode on any wireless-compatible network. You can use the printer in Ad-Hoc (peer-to-peer) or Infrastructure (access point) wireless mode. Use the Summit Client Utility (SCU) available on your printer to configure your wireless card to communicate with your network.

To start the Summit Client Utility, touch the **Home** key, then select **Wi-Fi**. You see the main SCU window.



Note: If you cannot access the Summit Client Utility, check the System Lockdown settings. You may need to be in Admin Mode to access wireless features. See “[Using the System Lockdown Option](#)” for more information.

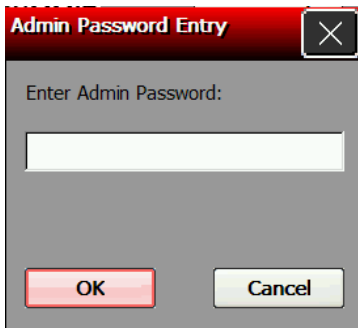
The main window shows the active profile, current wireless status (Down, Disabled, Not Associated, Associated, or Authenticated), the radio type, the regulatory domain, and the driver version. From the main window you can also log in as administrator to make changes to radio settings, and disable or enable the radio.

Finding a Network

Review how to enter data using the input panel before continuing. See “[Entering Data Using the Input Panel](#)” for more information.

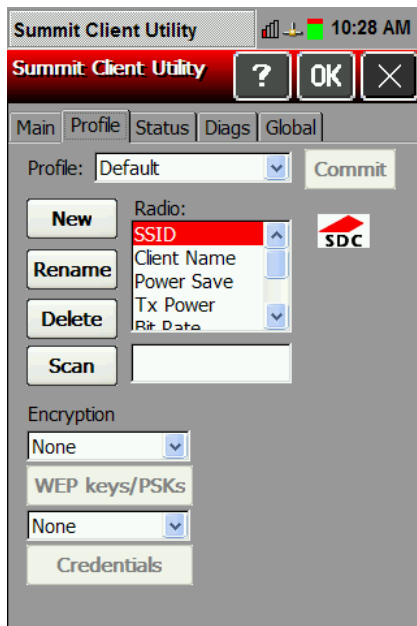
The printer searches for available networks and lists the SSIDs, signal strength, and encryption. You can connect to an existing network profile if you have the required network security information. You can create up to 20 profiles.

1. From the main SCU window, touch **Admin Login**.
2. Enter the password. Touch the diamond key to display the input panel if it does not automatically appear. The default password is **SUMMIT**. The password is case-sensitive. See “[Setting the Password](#)” later in this chapter for information on setting passwords.
3. Touch **OK**.



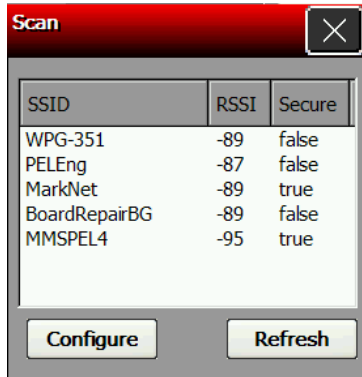
Once you are logged in, the main SCU window shows “Admin Logout” instead of “Admin Login.”

4. Touch the Profile tab.



5. Touch Scan.

A list of available networks appears.



6. Select the network you need, then touch Configure.

7. Touch Yes.

SCU creates a profile for the selected network.

Creating a Profile

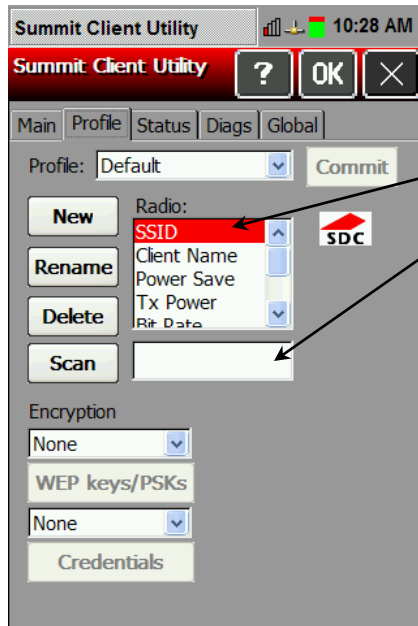
The default profile does not have an SSID or security settings. It can only connect to an access point that broadcasts its SSID and is not secured. Use the instructions in this section to create a new profile without scanning for a network. The Profile window also allows you to edit or delete existing profiles.

Review how to enter data using the input panel before continuing. See "[Entering Data Using the Input Panel](#)" for more information.

1. From the main SCU window, touch **Admin Login** and enter the password. Touch the diamond key to display the input panel if it does not automatically appear. The default password is **SUMMIT**. Touch **OK**.
2. Touch the **Profile** tab.
3. Touch **New** and then touch the Profile box. Touch the diamond key to display the input panel if it does not automatically appear. Enter the profile name. Touch the diamond key to hide the input panel. Touch **OK**.



- Specify the Radio settings including SSID, TX power, Radio mode, authentication and encryption, along with any necessary credentials.



- Touch setting
- Touch inside the input box.
- Touch the diamond key to display the input panel if it does not automatically appear.
- Enter the information.
- Touch the diamond key to hide the input panel.

- Enter any other settings required by your network administrator.
- When you are finished, touch the **Main** tab. Your new profile appears in the Active Profile drop-down menu.
- Select your new profile from the drop-down menu. The printer connects to the network based on your settings.
- Touch **OK** to save the settings.

About ThirdPartyConfig

- The ThirdPartyConfig profile allows you to configure the printer's wireless settings using Windows Zero Config (WZC) instead of the Summit Client Utility. When you select this profile, the printer automatically turns off and back on and launches WZC.
- We recommend using the Summit Client Utility to configure the Summit 802.11g wireless card.

Setting a Password

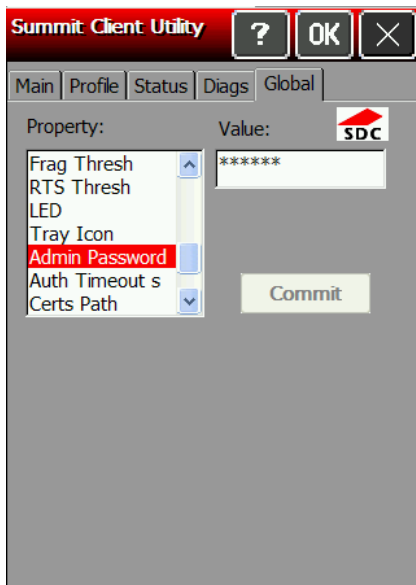
You can set or change the SCU Admin password. The default is **SUMMIT**.

Review how to enter data using the input panel before continuing. See "[Entering Data Using the Input Panel](#)" for more information.

Note: Make a note of the password if you change it. The Admin password restricts all access to wireless settings.

- From the main window, touch **Admin Login**.
- Enter the password. Touch the diamond key to display the input panel if it does not automatically appear. The default password is **SUMMIT**. Touch **OK**.

3. Touch the **Global** tab.



4. Scroll down the Property menu until you see Admin Password.

5. Select **Admin Password**. Touch the **Value** box. Enter the new password.

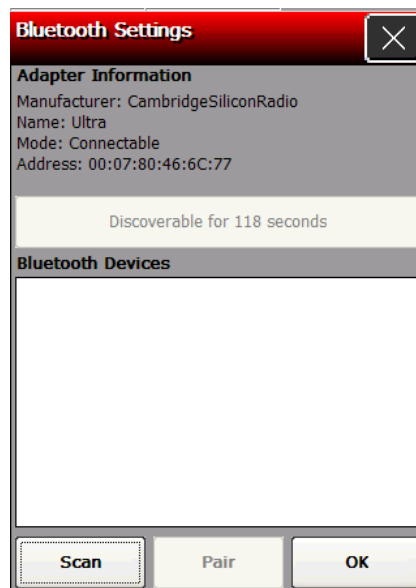
6. Touch **Commit** to save your changes.

Note: Make a note of the password if you change it. The Admin password restricts all access to wireless settings.

Bluetooth® is a way to wirelessly communicate between devices. Your device must be Bluetooth® enabled (contain a Bluetooth chip) to use Bluetooth technology. The Bluetooth-enabled printer has a line-of-sight range of approximately 3,280 feet (1 km). It can connect to a PC or other Bluetooth-enabled device, Microsoft® ActiveSync, or LAN network.

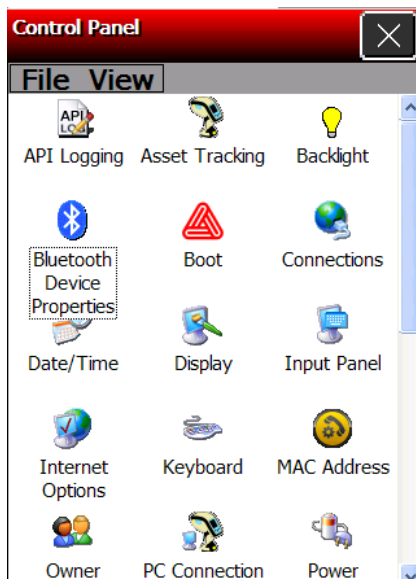
Making the Printer Discoverable

1. Touch the Emerald key to access the Start Menu, select **Settings, Control Panel,** and **Bluetooth Device Properties.**
2. Touch **Make Device Discoverable.** This allows your 6057 to be found by other Bluetooth® devices for 120 seconds. A countdown is shown in place of the button.



Pairing the Printer

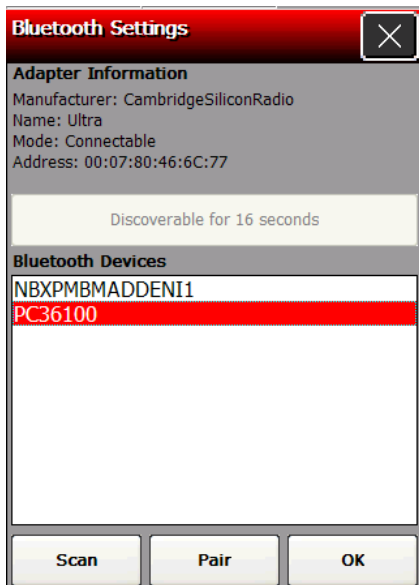
1. Touch the Emerald key to access the Start Menu, select **Settings, Control Panel,** and **Bluetooth Device Properties.**



2. Touch **Scan**. A list of discoverable Bluetooth® devices appear in the box.



3. Select the device you want to pair with.

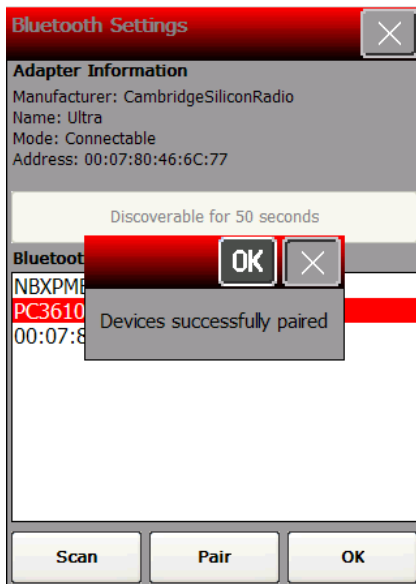


4. Touch **Pair**.

5. Enter a PIN. Touch the diamond key to display the input panel if it does not automatically appear.



4. Touch **OK**. A message box appears to tell you that the devices are successfully paired.



6. Touch **OK**.

Starting the Utility

1. To start the Wavelink Avalanche utility, from the **Start Menu**, select **Programs, Wavelink Avalanche**.
2. Enter the administrator password. Touch the diamond key to display the input panel if it does not automatically appear. The default password is **SYSTEM**. The password is case-sensitive.
3. Touch **OK**.

Closing the Utility

1. To close the Wavelink Avalanche utility, from the **File Menu**, select **Exit**.
2. Enter the exit password. Touch the diamond key to display the input panel if it does not automatically appear. The default password is **LEAVE**. The password is case-sensitive.
3. Touch **OK**.

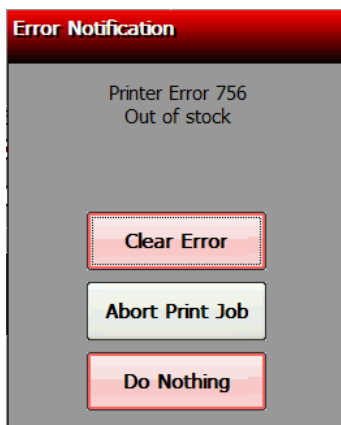
Use printer diagnostics to

- ◆ check machine totals
- ◆ print diagnostic labels
- ◆ perform sensor tests
- ◆ perform a printhead dot resistance test
- ◆ check the input panel's functionality.

Error Reporting

During normal printer operation, you may receive an error message. When an error occurs, a message appears briefly on the display "Press home key to clear the printer error" and a small stop sign icon appears in the Task Bar.

1. Press the **Home** key to show the error message. For example:



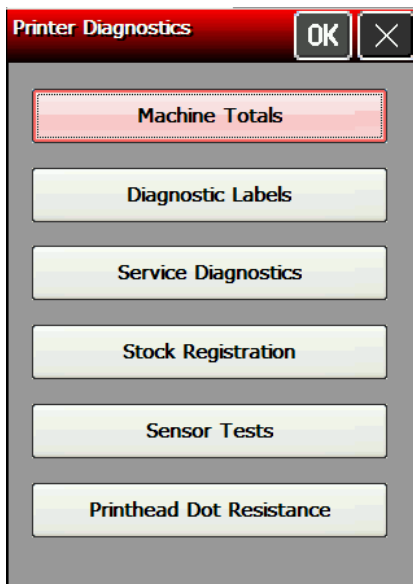
2. Select the option you need: Clear Error (clears the error and continues to feed or print supplies), Abort Print Job (clears the error and cancels the current print job), or Do Nothing (does not clear the error or reprint the job).

Note: An error may also be indicated through the LED. The printer's defaults are:

- ◆ Single yellow flash: Bad scan
- ◆ Repeated green flashing: Good scan
- ◆ Repeated blue flashing: insufficient batter power to print
- ◆ Repeated white flashing: out of supply
- ◆ Repeated red flashing: print error

Accessing Printer Diagnostics

1. Touch the **Home** key and then select **Printer Diag.**

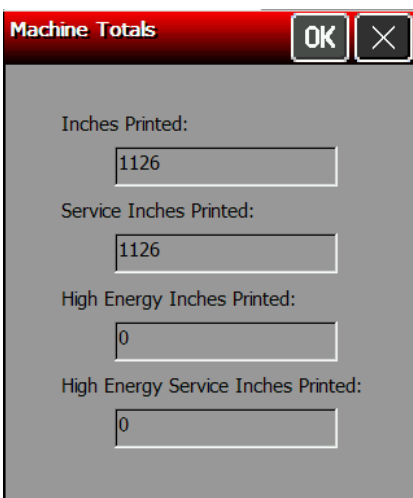


2. Decide which of the following tests to perform:
 - ◆ For Machine Totals, see "[Checking Machine Totals](#)" for more information.
 - ◆ For Diagnostic Labels, see "[Printing Diagnostic Labels](#)" for more information.
 - ◆ For Stock Registration, see "[Checking the Stock Registration](#)" for more information.
 - ◆ For Sensor Tests, see "[Testing the Sensors](#)" for more information.
 - ◆ For the Printhead Dot Resistance, see "[Testing the Printhead](#)," for more information.

The Service Diagnostics Menu can only be accessed by a Service Representative because it requires a separate password.

Checking Machine Totals

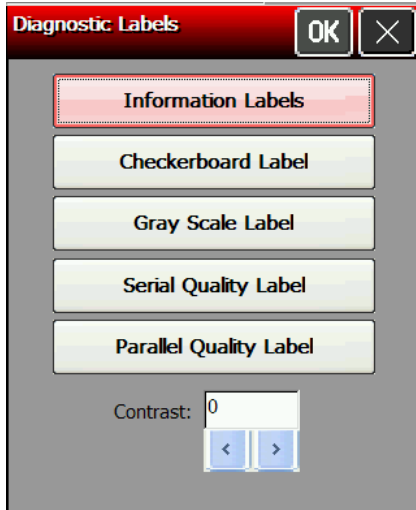
1. Select **Machine Totals** from the Printer Diagnostics window. You see the machine totals for inches printed, service inches printed, high (for synthetic supply) inches printed, and service high inches printed. The printer tracks how many inches of supply it prints.



2. Touch **OK** to return to the Printer Diagnostics window. OR Touch **X** to return to the desktop.

Printing Diagnostic Labels

1. Select **Diagnostic Labels** (test labels) from the Printer Diagnostics window.



2. Before you run these tests, load the supply in Non-Peel mode. Refer to the *Operator's Handbook* for more information about loading supply.

Select:

The following labels print:

Information Labels

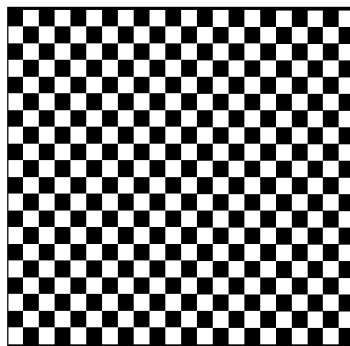
```
M06057STD      Diagnostics Info
Service Packs      None
PE Version        V1.1 (AK)
Total Inches:     00000490
Hi-Energy Inches: 00000000
Battery:          7.534V (60%)
PH Dot Resist Avg: 358
Bad Dot Count:    0
```

```
Settings Diagnostics Info
Sensor:           Black Mark
Stock Offset:     0
Contrast:         0
Speed:            Best Available

Network Diagnostics Info
Adapter Name:     SDCCF10G1
IP Address:       0.0.0.0
MAC Address:     00:01:02:0A:40:7E
```

The first information label shows the model number, service packs, print engine version, total inches, battery voltage, and printhead dot information. The second information label shows the current sensor, stock offset, contrast, speed, and network information.

Checkerboard Label

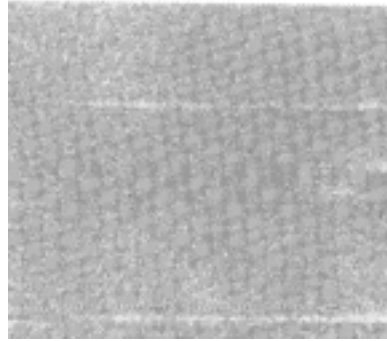


Prints a label to verify that the printhead strobes are working. If the printed sample has fewer lines or no lines, keep the sample and call Service.

Select:

The following label prints:

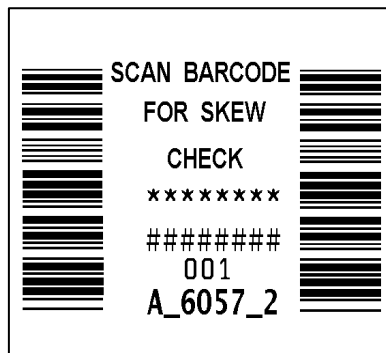
Gray Scale Label



Label with voids

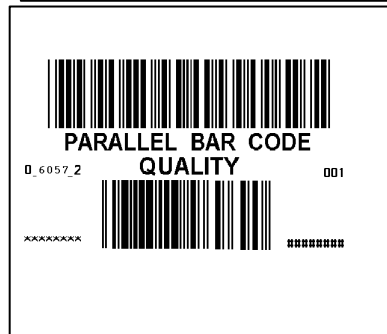
The gray scale test checks the uniformity of the printing. The printed sample should be uniformly gray across the supply. If you see voids, especially on the edges, keep the sample and call Service.

Serial Quality Label



A label prints bar codes for you to scan to check the quality of serial bar codes.

Parallel Quality Label



A label prints bar codes for you to scan to check the quality of parallel bar codes.

Contrast

Use the arrow keys to change the print contrast. The higher the number, the darker the print; the lower the number, the lighter the print.

The print contrast controls the darkness of the printing on your supply. The range is **-100** to **+100** and the default is 0. You may need to increase or decrease the print contrast depending on your supply type.

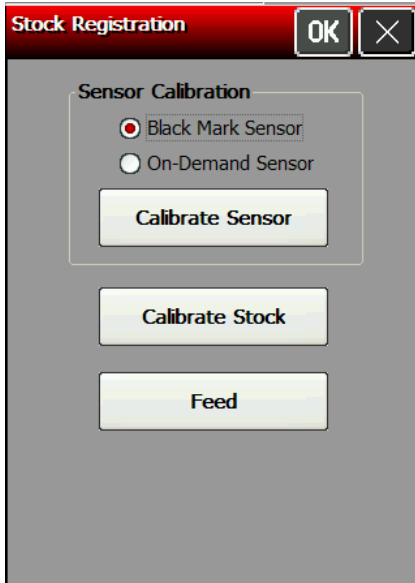
The correct print contrast setting affects how well your bar codes scan and how long your printhead lasts.

3. Touch **OK** to return to the Printer Diagnostics window.
OR
Touch **X** to return to the desktop.

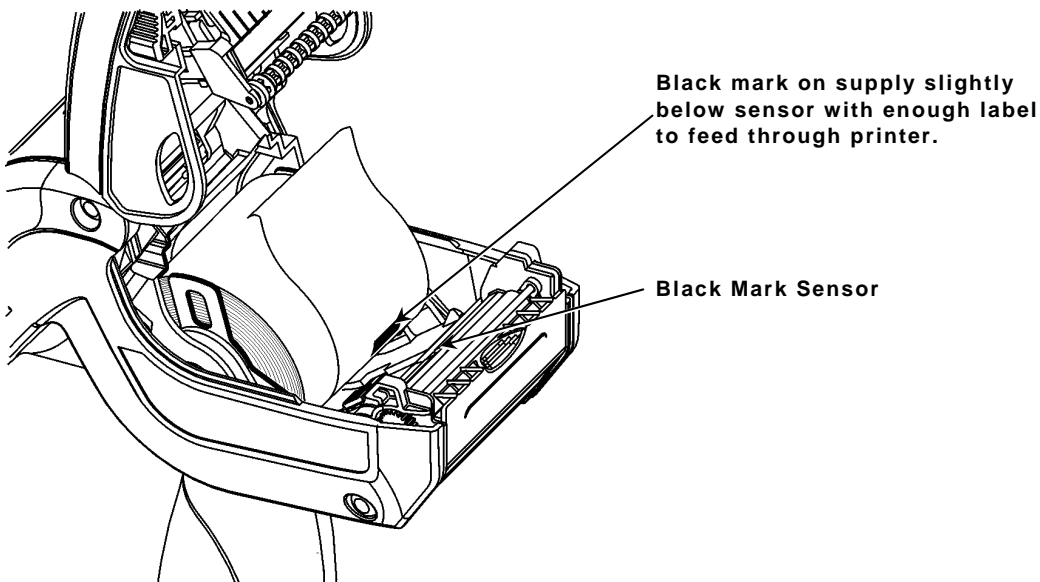
Checking the Stock Registration

If you **Calibrate Stock**, there is no need to calibrate the sensor.

1. Load the supply for non-peel mode as shown below.
2. Select **Stock Registration** from the Printer Diagnostics window.

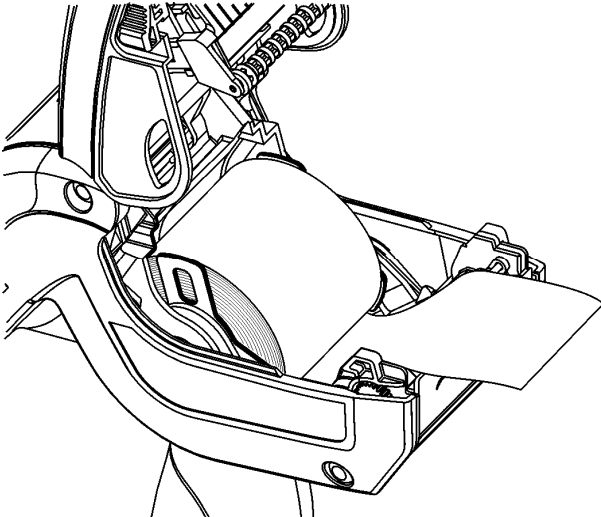


3. Select the sensor to calibrate (either Black Mark or On-Demand). The black mark sensor is used with black mark supplies (supplies with rectangular marks on the back side of the liner or on the supply). The on-demand sensor is for peeled supplies.
4. For black mark supplies longer than 4.0 inches, make sure supplies are loaded with a black mark slightly below the sensor as shown below. This feeds the least amount of labels during the calibration process.



5. Close the supply cover, then touch **Calibrate Sensor** to calibrate the black mark sensor. The printer feeds supply until it detects a black mark to calibrate the sensor. When the calibration is successful, a message appears: "Black Mark stock sensor calibration successful." Touch **OK**.

6. For on-demand supplies, make sure you calibrate over paper – lay the supply across the paper path as shown.



7. Close the supply cover, then touch **Calibrate Sensor** to calibrate the On-Demand sensor.

The printer feeds one or two labels to calibrate the on-demand sensor. When the calibration is successful, a message appears: “On Demand stock sensor calibration successful.” Touch **OK**.

Note: If you want to feed a blank label, touch **Feed**.

8. Touch **OK** to return to the Printer Diagnostics window.

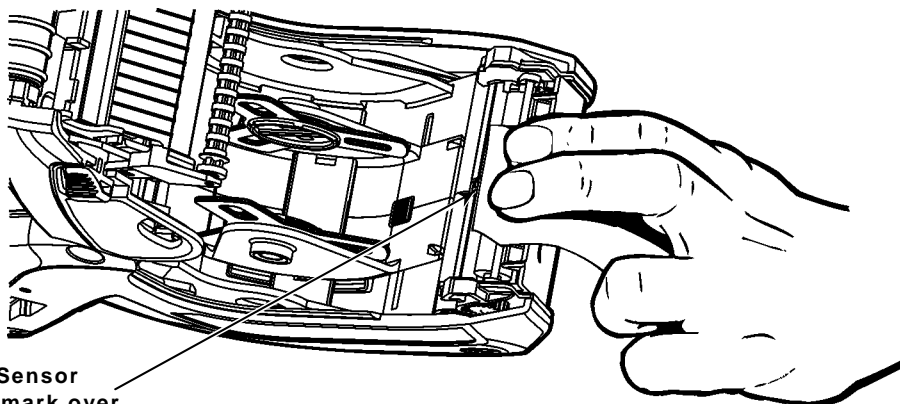
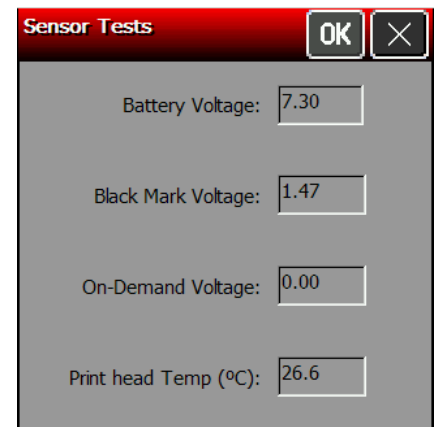
OR

Touch **X** to return to the desktop.

Testing the Sensors

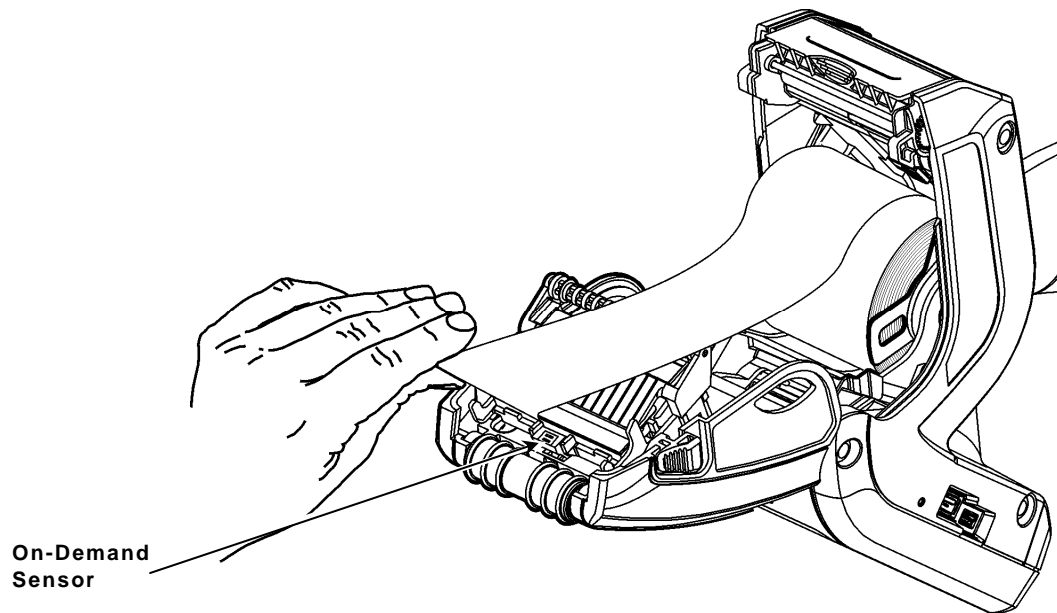
1. Select **Sensor Tests** from the Printer Diagnostics window.
2. You see the values for battery voltage, black mark voltage, on-demand voltage, and printhead temperature. The battery voltage range is between 7.0 and 8.4 volts. The printer does not print if the voltage is below 7.0.
3. Open the cover to test the sensors.

For the Black Mark sensor, hold a black mark against the sensor as shown. When you place the black mark on the sensor, the values change on the display. If white is over the sensor, the values shown for the sensor are higher. The range is between 0 and 5.0.



Black Mark Sensor
Place black mark over sensor.

For the *On-Demand* sensor, the range is between 0 and 5.0. When you hold a label over the sensor, the values change on the display. When the sensor is blocked by a label, the value is at the high end of the range. When the sensor is not blocked, the value is zero or close to zero.



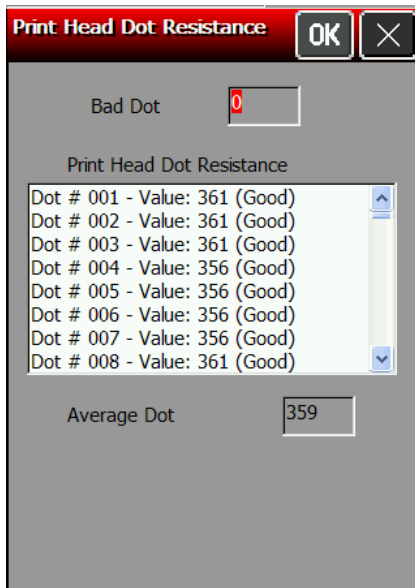
4. The value listed for PH Temperature is the current temperature of the printhead. The valid range is between 5 and 60 Celsius. The temperature of the printhead depends upon the number of labels printed and the operating environment. If the temperature is greater than 60, the printer does not print.

Note: If the value is not within the ranges, make a note of the values and call Service.

5. Touch **OK** to return to the Printer Diagnostics window.
OR
Touch **X** to return to the desktop.

Testing the Printhead

1. Select **Printhead Dot Resistance** from the Printer Diagnostics window to perform the



printhead dot resistance test.

2. The printhead test checks for dot resistance. The dot resistance test checks each dot on the printhead. Use your finger to scroll through the dot values. The valid range is between 245 and 455.

Note: If the values are not within range, make a note of the values and call Service.

3. Touch **OK** to return to the Printer Diagnostics window.
OR
Touch **X** to return to the desktop.

CONFIGURING THE SCANNER

Use scanner configuration to

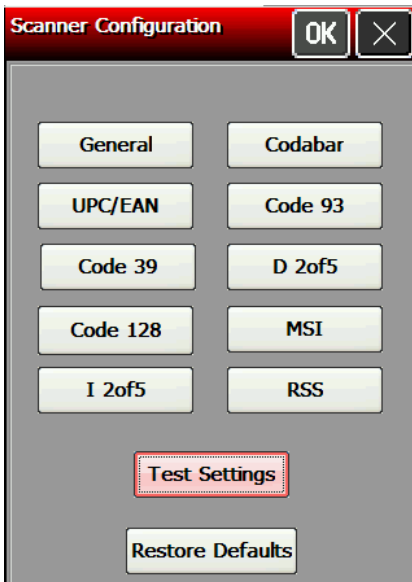
- ◆ set the scanner operating mode, trigger mode, and scanner timeout
- ◆ select the .wav file for successful and unsuccessful scans
- ◆ enable and disable each specific bar code.

Setting Scanner Options

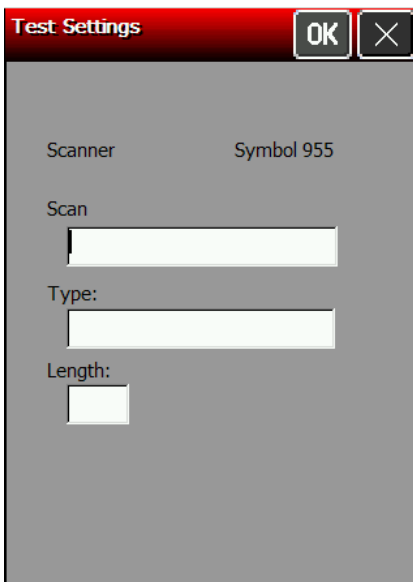
1. Touch the **Home** key and then select **Scanner Config**.

Note: Touch **Restore to Defaults** to return all the scanner settings to the default values. The printer automatically resets any invalid settings or ranges to the default setting.

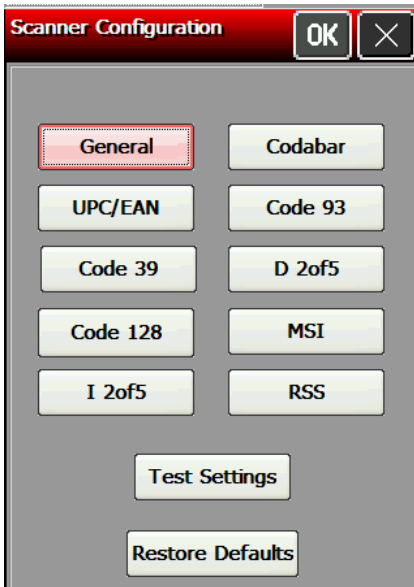
2. Touch **Test Settings** to go to the Scanner Diagnostics window.



3. Scan a bar code. The type of bar code and length of data appears. Touch **OK** to return to the Scanner Configuration window.

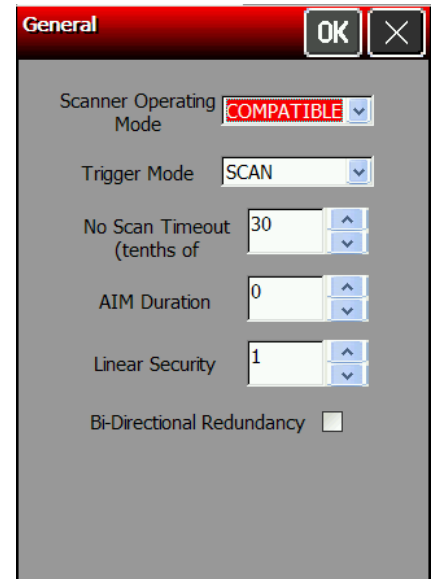


4. Touch **General**.



5. Set the **Scanner Operating Mode**: Momentary, Continuous, or Compatible. The default is compatible.

- Momentary** The scanner is on when the trigger is pressed and goes off when the trigger is released.
- Continuous** The scanner is always on. A good scan causes the scanner to reset and continue scanning. To save battery life, the 2D scanner uses "Motion Enhancement" (triggerless operation); the scanner only scans when it senses motion.
- Compatible** The scanner operates in compatible mode, which means the scanner is on when the trigger is pressed and goes off after a successful scan or a predetermined timeout period.



Note: An unsuccessful scans turns off the scanner and activates the tone (.wav file) set using the Scanner Configuration menu. A "no scan" is interpreted as an unsuccessful scan.

6. Set the Operation of the **Trigger Mode**: Scan, Drop, or Forward. The default is Forward.

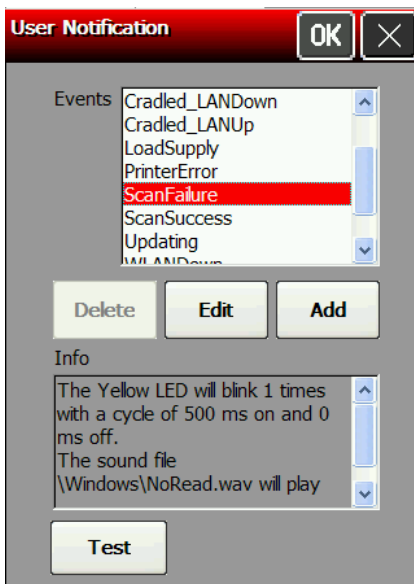
- Scan** Pressing the trigger turns on the scanner.
- Drop** The printer ignores the trigger press and does not turn on the scanner.
- Forward** The printer passes the trigger press to the application as an F20, which allows for more control of the application. You can code a custom application to perform a special function whenever it receives an F20.

7. Set the **No Scan Timeout** in tenths of seconds, which is the amount of time the scanner beam is on before turning off when the trigger is pressed. The range is **5 – 99**. The default is 30.

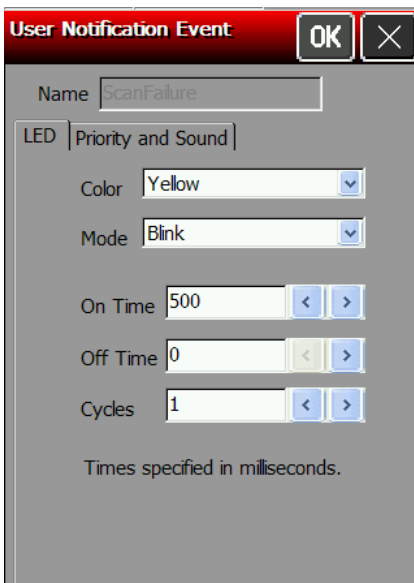
8. Set the **AIM Duration**, which is the duration of the aiming beam when the scanner is activated. The range is **0.0 - 9.9** seconds in .1-second increments (0 disables the AIM feature). The default is 0.
9. Set the **Linear Security**, which is how many times to scan the same bar code to determine a successful read. The range is **1 – 4**. The default is 1.
10. Enable **Bi-Directional Redundancy**, which specifies that good scans must occur in both directions (forward and reverse) for the scan to be complete.
11. Touch **OK** to return to the Scanner Configuration window.

Setting a Tone for Good or Bad Scans

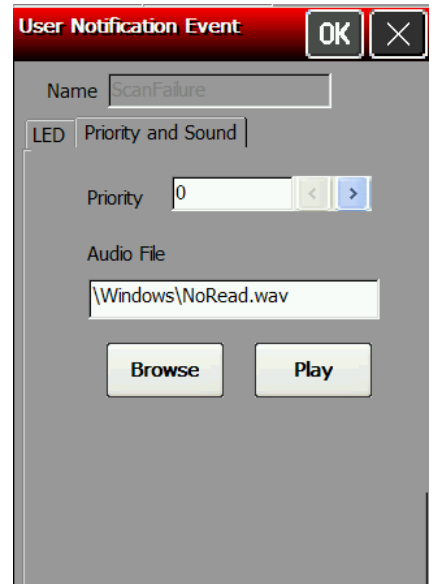
1. Touch the Emerald key to access the Start Menu, select **Settings, Control Panel, and User Notification**.
2. Select the Event to add sound.



3. Touch **Edit**.
4. Change the LED settings (Color, Mode, ON/OFF Time and Cycles), if necessary. The default LED color setting is yellow for a bad scan and green for a good scan.



5. Touch the **Priority and Sound** tab.
6. Set the Priority if multiple events try to control the LED at the same time. A higher or equal number interrupts a lower number. Use 0 for most applications, unless you need to override the system events (error, low battery, etc.). The range is **0 – 254**. The default is 0.
7. Use **Browse** to select the Audio File tone (.wav file) for a Good Scan. This tone is heard whenever a bar code is successfully scanned. Navigate to the .WAV file you need.
8. Touch **OK** in the upper-right corner.
9. Touch **Play** to hear the tone.
10. Touch **OK**.
11. Select the next Event to add sound. Repeat steps 2-10 for each Event.



Enabling Specific Bar Codes

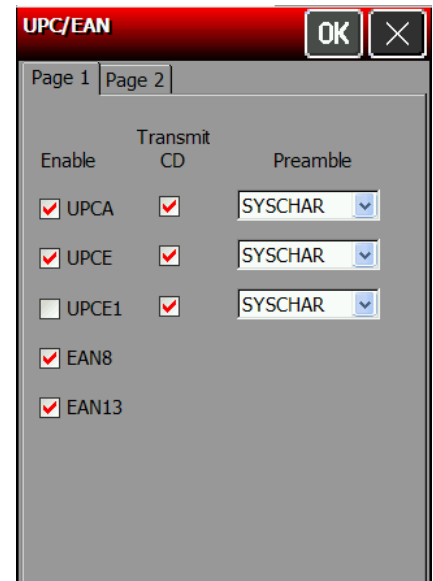
You must enable and disable each specific bar code type for scanning. Some bar codes require additional settings. Some bar codes can be printed, but not scanned. See "[Printable Bar Codes vs. Scannable Bar Codes](#)" for more information.

Configuring UPC/EAN Bar Codes

1. To configure UPC/EAN settings, select **UPC/EAN** from the Scanner Configuration window.
2. Enable each bar code you need to scan.

UPCA	Allows the scanner to scan UPCA, UPCA+2, and UPCA+5 bar codes.
UPCE	Allows the scanner to scan UPCE bar codes.
UPCE1	Allows the scanner to scan UPCE1 bar codes.
EAN8	Allows the scanner to scan EAN8 bar codes.
EAN13	Allows the scanner to scan EAN13 bar codes.
3. For each bar code, decide if you want to tell the scanner to return the check digit with the data when the bar code is scanned. Check the **Transmit CD** box as necessary.
4. For each bar code, set the **Preamble**, which specifies the characters that preface the returned data from a UPCA bar code. The choices are
 - ◆ **None** (No Data)
 - ◆ **SYSCCHAR** (System Character)
 - ◆ **SYSCCOUNT** (Country Code and System Character).

Note: The USA country code is 0.



5. Touch the **Page 2** tab at the top of the window to continue.

6. Enable each bar code you need to scan

Coupon Code Allows the scanner to scan UPCA, UPCA+2, UPCA+5, and UPCA/EAN-128 bar codes.

Note: Set Supplemental to **Auto** to use this option.

UPCE to UPCA Tells the scanner to convert UPCE bar codes to a UPCA format before returning the data.

Note: After the conversion, your UPCA selections affect the data.

EAN Zero Extend Tells the scanner to add 5 leading zeros to EAN8 bar codes to convert them into EAN13 bar codes.

Bookland Allows the scanner to scan Bookland EAN bar codes.

EAN8 to EAN13 Tells the scanner to label the bar code as EAN8 or EAN13 when EAN Zero Extend is enabled.

UPCE1 to UPCA Tells the scanner to convert UPCE1 bar codes to a UPCA format before returning the data.

Note: After the conversion, your UPCA selections affect the data.

7. Set the **Supplemental Mode** for UPC/EAN bar codes, which specifies how to treat UPC and EAN bar codes with supplemental characters (UPCA+2, for example). The choices are Required, Ignore, or Auto. The default is Ignore.

Required The scanner scans bar codes with supplemental characters only. For example, it scans a UPCA+2 bar code, but not UPCA.

Ignore The scanner ignores supplemental characters. For example, it scans a UPCA+2 bar code as a UPCA.

Auto Uses scanning information as specified in Scan UPC/EAN Supplemental Redundancy.

8. Set the **Supplemental Redundancy**, which sets the number of times a symbol without supplemental information is decoded. The range is **2 – 20**. The default is 7.

9. Set the **Security**, which is how many times to scan the same bar code to determine a successful read. The range is **1 – 4**. The default is 1.

Before setting this security level, you must decide the print quality of the bar codes you are scanning. The better the quality of the bar code, the lower the security level needed.

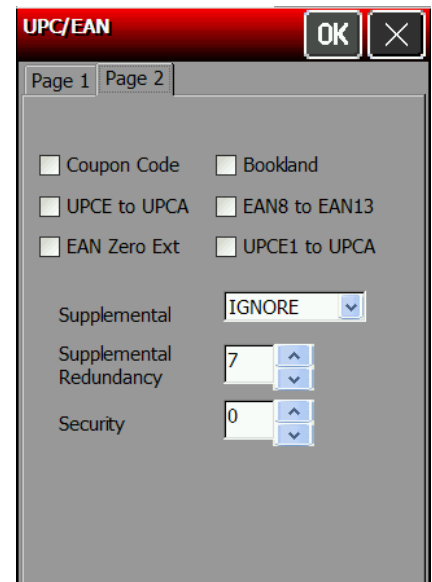
1 Choose 1 if most of your scans are successful.

2 Choose 2 when your unsuccessful scans are related to characters 1, 2, 7, and 8.

3 Choose 3 when your unsuccessful scans are not limited to characters 1, 2, 7, and 8.

4 Choose 4 if unsuccessful scans still occur at level 2.

10. Touch **OK** to save all the settings and return to the Scanner Configuration window.



Configuring Code 39 Bar Codes

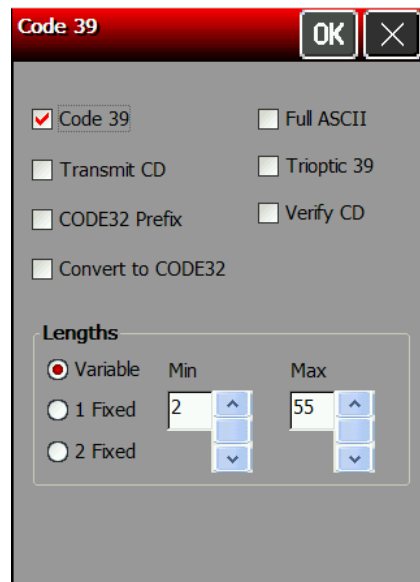
1. To configure Code 39 settings, select **Code 39** from the Scanner Configuration window.

Code 39	Allows the scanner to scan Code 39 bar codes.
Transmit CD	Tells the scanner to return the check digit with the data when a Code 39 bar code is scanned.
Code32 Prefix	Allows the scanner to scan Code 32 Prefix bar codes.
Convert to Code32	Tells the scanner to convert Code 39 bar codes to Code 32 bar codes.
Full ASCII Conversion	Allows the scanner to interpret data in a Code 39 bar code as an ASCII representation. The scanner does not auto discriminate between Code 39 and Code 39 Full ASCII. Note: Do not enable this option and Trioptic Code 39 at the same time.

Trioptic 39 Allows the scanner to scan Trioptic Code 39 bar codes. The length is always 6.
Note: Do not enable this bar code and Code 39 Full ASCII at the same time.

Verify CD Tells the scanner to check the integrity of all Code 39 bar codes that it scans.
Note: Use this option only for Code 39 bar codes with a modulo 43 check digit.

Lengths Sets the length(s) for Code 39 bar codes.
Variable, specifies that Code 39 bar codes can be any length.
Note: Lengths include check digits.
1 Fixed, specifies a single length for valid Code 39 bar codes. The range for Length 1 is **2 – 99**. The default is 2.
2 Fixed, specifies two lengths for valid Code 39 bar codes. The range for Length 2 is **2 – 99**. The default is 55.
If you have enabled Code 39 Full ASCII, choose **Variable**.
Note: Specifying a range of lengths increases the likelihood of unsuccessful scans.



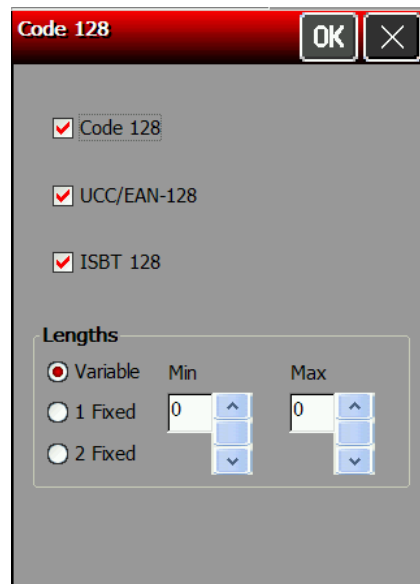
2. Enable each bar code you need to scan.
3. Touch **OK** to save all the settings and return to the Scanner Configuration window.

Configuring Code 128 Bar Codes

1. To configure Code 128 settings, select **Code 128** from the Scanner Configuration window.

Code 128	Allows the scanner to scan Code 128 bar codes.
UCC/EAN-128	Allows the scanner to scan UCC/EAN-128 bar codes.
ISBT 128	Allows the scanner to scan ISBT 128 bar codes. Any length bar code is valid.

2. Enable each bar code you need to scan.
3. Touch **OK** to save all the settings and return to the Scanner Configuration window.



Configuring I 2 of 5 Bar Codes

1. To configure I 2of5 settings, select **I 2 of 5** from the Scanner Configuration window.

I 2of5 Allows the scanner to scan I 2of5 bar codes.
Transmit CD Tells the scanner to return the check digit with the data when an I 2of5 bar code is scanned.
Convert to EAN13 Tells the scanner to convert 14-character I 2of5 bar codes into an EAN13 bar code.

For the conversion to work, the following must occur:

- ◆ I 2of5 bar codes must be enabled.
- ◆ 14 must be a valid length.
- ◆ The data must have a leading zero.
- ◆ The data must include an EAN13 check digit.

Verify CD Tells the scanner to check the integrity of a scanned I 2of5 bar code to ensure it complies with either USS or OPCC standards.

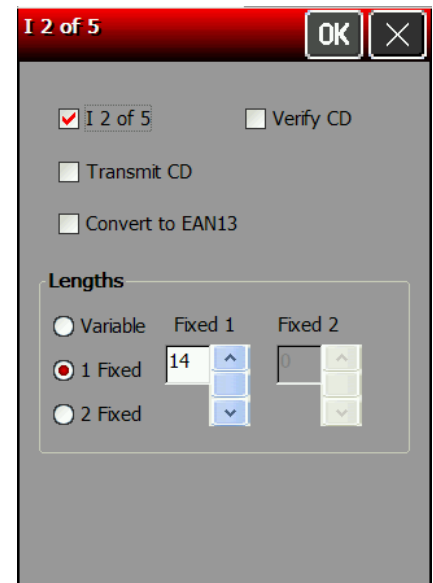
Lengths *Variable*, specifies that I 2of5 bar codes can be any length.

Sets the length(s) for I2 of 5 bar codes. **Note:** Specifying a range of lengths increases the likelihood of unsuccessful scans.

1 Fixed, specifies a single length for valid I 2of5 bar codes. The range for Length 1 is 2 – 99. The default is 14.

2 Fixed, specifies two lengths for valid I 2of5 bar codes. The range for Length 2 is 2 – 99. The default is 0.

2. Enable each bar code you need to scan.
3. Touch **OK** to save all the settings and return to the Scanner Configuration window.



Configuring MSI Bar Codes

1. To configure MSI settings, select **MSI** from the Scanner Configuration window.

MSI Allows the scanner to scan MSI bar codes.
Transmit CD Tells the scanner to return the check digit with the data when an MSI bar code is scanned.
Mod 10/11 CD Scheme Tells which algorithm to use to ensure the integrity of a two-check digit MSI bar code.
Use 2 CDs Tells the number of check digits that MSI bar codes should have.

Note: Check digits are not always returned with the data. If you choose two check digits, you must choose a check digit algorithm.

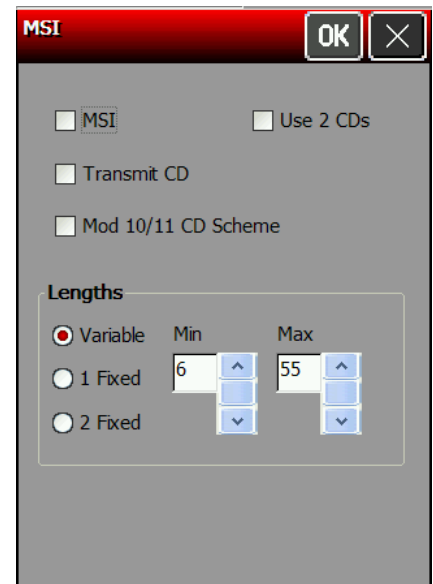
Lengths *Variable*, specifies that MSI bar codes can be any length.

Sets the length(s) for MSI bar codes. **Note:** Specifying a range of lengths increases the likelihood of unsuccessful scans.

1 Fixed, specifies a single length for valid MSI bar codes. The range for Length 1 is 1 – 99. The default is 6.

2 Fixed, specifies two lengths for valid MSI bar codes. The range for Length 2 is 1 – 99. The default is 55.

2. Enable each bar code you need to scan.
3. Touch **OK** to save all the settings and return to the Scanner Configuration window.



Configuring Codabar Bar Codes

1. To configure Codabar settings, select **Codabar** from the Scanner Configuration window.
2. Enable each bar code you need to scan.

Codabar Allows the scanner to scan Codabar bar codes.

NOTISEdit Tells the scanner to strip the start and stop characters from scanned Codabar bar codes.

CLSIEdit Tells the scanner to strip the start and stop characters from 14-character Codabar bar codes and insert spaces after the first, fifth, and tenth characters.

Note: The 14-character length does not include start and stop characters.

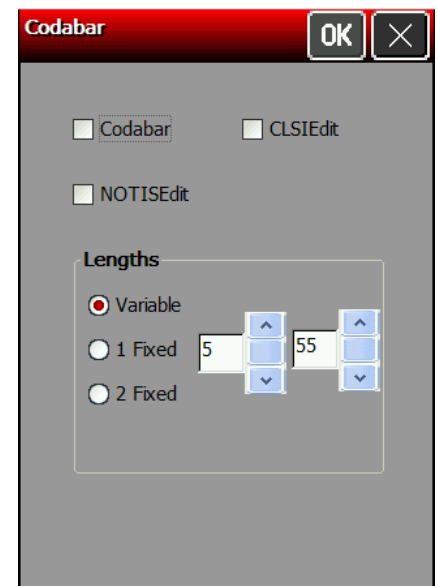
Lengths *Variable*, specifies that Codabar bar codes can be any length.

Sets the length(s) for Codabar bar codes. **Note:** Specifying a range of lengths increases the likelihood of unsuccessful scans.

1 Fixed, specifies a single length for valid Codabar bar codes. The range for Length 1 is **1 – 99**. The default is 5.

The range for Length 1 is **1 – 99**. The default is 5.

2 Fixed, specifies two lengths for valid Codabar bar codes. The range for Length 2 is **1 – 99**. The default is 55.



3. Touch **OK** to save all the settings and return to the Scanner Configuration window.

Configuring Code 93 Bar Codes

1. To configure Code 93 settings, select **Code 93** from the Scanner Configuration window.
2. Enable each bar code you need to scan.

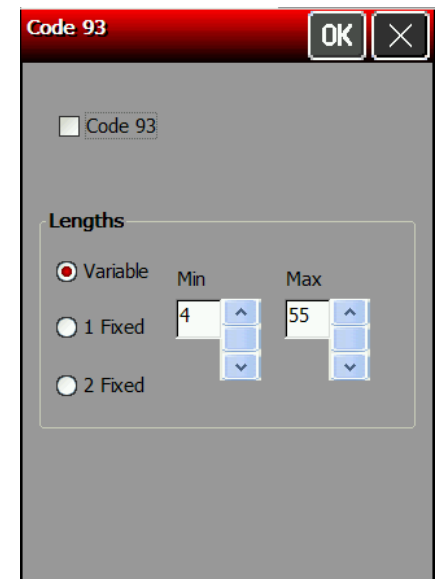
Code 93 Allows the scanner to scan Code 93 bar codes.

Lengths *Variable*, specifies that Code 93 bar codes can be any length.

Sets the length(s) for Code 93 bar codes. **Note:** Specifying a range of lengths increases the likelihood of unsuccessful scans.

1 Fixed, specifies a single length for valid Code 93 bar codes. The range for Length 1 is **2 – 99**. The default is 4.

2 Fixed, specifies two lengths for valid Code 93 bar codes. The range for Length 2 is **2 – 99**. The default is 55.



3. Touch **OK** to save all the settings and return to the Scanner Configuration window.

Configuring D 2of5 Bar Codes

1. To configure D 2of5 settings, select **D 2of5** from the Scanner Configuration window.

2. Enable each bar code you need to scan.

- D 2of5** Allows the scanner to scan D 2of5 bar codes.
- Lengths** Sets the length(s) for D 2of5 bar codes.
- Note:** Specifying a range of lengths increases the likelihood of unsuccessful scans.
- 1 Fixed**, Specifies a single length for valid D 2of5 bar codes. The range for Length 1 is **2 – 99**. The default is 12.
- 2 Fixed**, Specifies two lengths for valid D 2of5 bar codes. The range for Length 2 is **2 – 99**. The default is 0.

3. Touch **OK** to save all the settings and return to the Scanner Configuration window.

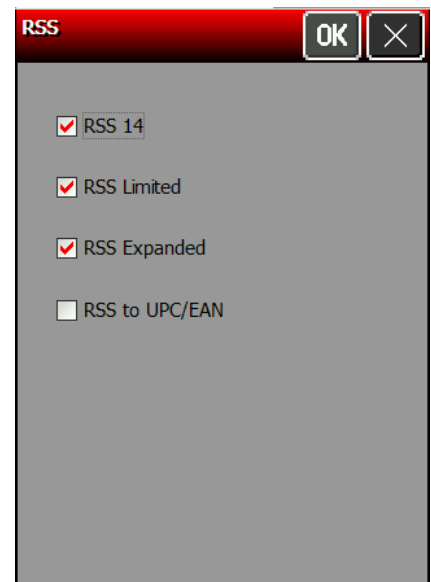
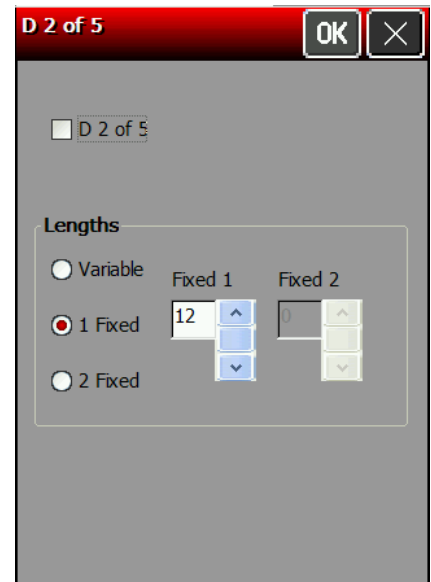
Configuring RSS Bar Codes

1. To configure RSS settings, select **RSS** from the Scanner Configuration window.

2. Enable each bar code you need to scan.

- RSS 14** Allows the scanner to scan RSS 14 bar codes.
- RSS Limited** Allows the scanner to scan RSS Limited bar codes.
- RSS Expanded** Allows the scanner to scan RSS Expanded bar codes.
- RSS to UPC/EAN** Tells the scanner to convert RSS bar codes into an UPC/EAN bar code.

3. Touch **OK** to save all the settings and return to the Scanner Configuration window.



Scannable Bar Codes vs. Printable Bar Codes

This chapter defines the unique set of bar code options for each bar code. Bar codes are separated into one-dimensional and two-dimensional categories.

1D Bar Codes	2D Bar Codes
Codabar Code 16K Code 39 Code 93 Code 128 Interleaved 2of5 MSI UPCA, UPCE, EAN	Data Matrix GS1 DataBar MaxiCode Micro PDF417 PDF417 POSTNET Quick Response

Use the following table to see which bar codes the printer can scan and print:

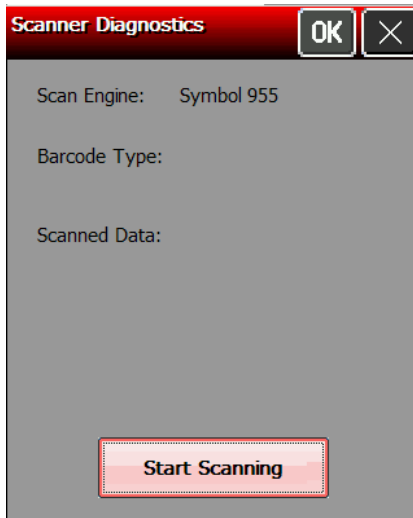
Bar Code	Scan	Print	Bar Code	Scan	Print
Codabar	√	√	I2of5	√	√
Code 16		√	I2 of 5 with Barrier Bar	√	√
Code 39 (no check digit)	√	√	MaxiCode	√*	√
Code 39 (MOD 43 check digit)	√	√	MicroPDF417	√*	√
Code 93	√	√	MSI	√	√
Code 128	√	√	PDF417	√*	√
Data Matrix	√*	√	Postnet		√
EAN 8	√	√	Quick Response	√*	√
EAN 8 +2	√	√	UPCA	√	√
EAN 8 +5	√	√	UPCA +2	√	√
EAN 13	√	√	UPCA +5	√	√
EAN 13 +2	√	√	UPCA & Price CD	√	√
EAN 13 +5	√	√	UPCE	√	√
EAN 13 & Price CD	√	√	UPCE +2	√	√
GS1 DataBar/rss	√*	√	UPCE +5	√	√

*Requires the optional 2D scanner.

Using Scanner Diagnostics

Use scanner diagnostics to view a bar code's type and data in a bar code.

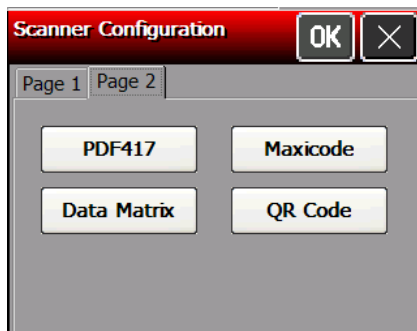
1. Touch the **Home** key and then select **Scanner Diag.**
2. Scan a bar code by pressing the trigger or selecting **Start Scanning**. You see the bar code's type and data.



3. Touch **OK** to return to the desktop.

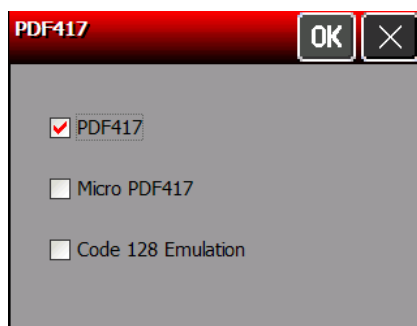
Setting 2D Scanner Options (Factory Installed Option)

1. Touch the **Home** key and then select **Scanner Config.**
2. Touch **Page 2** to see the 2D bar code options.



Configuring PDF417

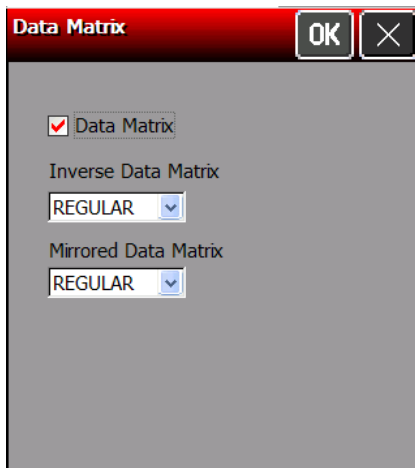
1. Select **PDF417** from page 2 of the Scanner Configuration window.



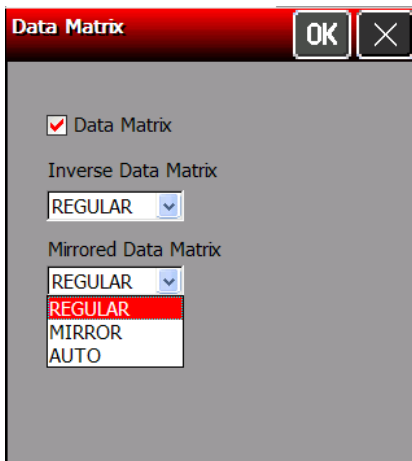
2. Touch **OK** to save all the settings and return to the Scanner Configuration window.

Configuring Data Matrix

1. Select **Data Matrix** from page 2 of the Scanner Configuration window.
2. Set the Inverse Data Matrix.



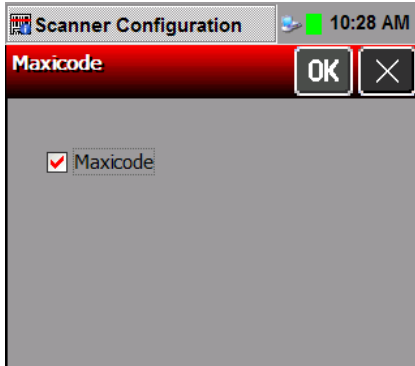
3. Set the Mirrored Data Matrix.



4. Touch **OK** to save all the settings and return to the Scanner Configuration window.

Configuring Maxicode

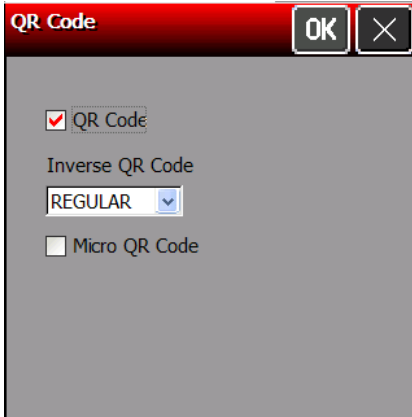
1. Select **Maxicode** from page 2 of the Scanner Configuration window.



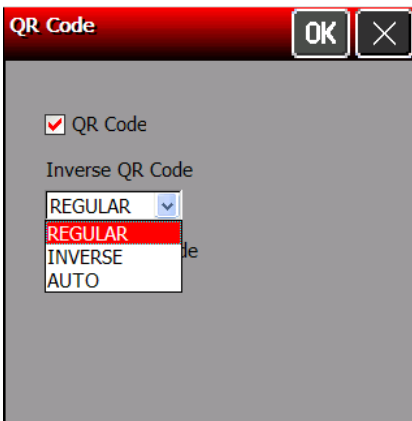
2. Touch **OK** to save all the settings and return to the Scanner Configuration window.

QR Code

1. Select **QR Code** from page 2 of the Scanner Configuration window.



2. Set the Inverse QR Code setting.



3. Place a checkmark beside Micro QR Code if you are using a Micro QR Code.
4. Touch **OK** to save all the settings and return to the Scanner Configuration window.

INDEX

B

Bar Codes 5-4
 Codabar 5-8
 Code 128 5-7
 Code 39 5-6
 Code 93 5-9
 D 2of5 5-9
 I 2of5 5-7
 MSI 5-8
 Printable 5-10
 RSS 5-9
 Scannable 5-10
 UPC/EAN 5-5

C

Calibrate Stock 4-5
Changing the PC Connection 2-7
Changing the Power Properties 2-2
Checkerboard Label 4-4

D

default password.. 2-1, 2-2, 2-5
Device Name 2-11
Diagnostic Labels 4-3

E

Editing Owner Data i, 2-1
Error Reporting 4-1
 LED 4-1
 messages 4-1

G

Gray Scale Label 4-4

I

Importing Asset Tracking Files
 Exporting Asset Tracking Files 2-2
Information Labels 4-3
Input Panel Options 2-4
input panel's functionality ... 4-1

L

LED settings 2-8
Locking the System 2-5
Locking the USB Ports 2-6

M

Machine Totals i, 4-2

N

Notification Events 2-8

O

Operating System information 2-10

P

Printer
 diagnostic labels 4-1
 Diagnostics 4-1
 machine totals 4-1
 Machine Totals 4-2
 sensor tests 4-1
Printer Diagnostics 4-1
Printhead
 Dot Resistance 4-8
 Testing 4-8
printhead dot resistance test 4-1
Printhead Test 4-8
Printing an Asset Tracking Label 2-2
Priority and Sound 2-9

S

Scanner
 Linear Security 5-2
 Trigger Mode 5-2
scanner 5-1
Scanner
 AIM Duration 5-2
 Bi-Directional Redundancy 5-2
 configuration 5-1
 Diagnostics 5-10
 No Scan Timeout 5-2
 operating mode 5-1
 Operating Mode 5-2
 Options 5-1
 Priority and Sounds 5-4
 timeout 5-1
 trigger mode 5-1
Sensors 4-7
 Tests 4-7
Serial Quality Label 4-4
Software Version 2-11
Speaker Test 2-10
Stock Registration 4-5
Summit Client Utility 3-1
System Lockdown 2-5
System Properties 2-10

T

test labels 4-3

U

Unlocking the System 2-6
Using Asset Tracking i, 2-1
Using the Display i, 1-1
Using the Input Panel i, 1-2, 1-3, 2-1, 2-5, 2-8, 2-10, 3-3, 3-4, 3-5

W

wireless	
802.11g.....	3-5
Wireless.....	3-1
Card	3-1
default password	3-3, 3-4
Network	3-3
Profile.....	3-4
Settings	3-1
Summit	3-1
Summit Client Utility.....	3-1
ThirdPartyConfig.....	3-5



028028

Avery Dennison
170 Monarch Lane
Miamisburg, OH 45342

1-800-543-6650 (In the U.S.A.)
1-800-387-4740 (In Canada)
www.monarch.com



Free Manuals Download Website

<http://myh66.com>

<http://usermanuals.us>

<http://www.somanuals.com>

<http://www.4manuals.cc>

<http://www.manual-lib.com>

<http://www.404manual.com>

<http://www.luxmanual.com>

<http://aubethermostatmanual.com>

Golf course search by state

<http://golfingnear.com>

Email search by domain

<http://emailbydomain.com>

Auto manuals search

<http://auto.somanuals.com>

TV manuals search

<http://tv.somanuals.com>