

INTRODUCTION

Change the Time and Time Zone.

APPLIES TO:

- F5D8232au4



Before you begin:

You will need:

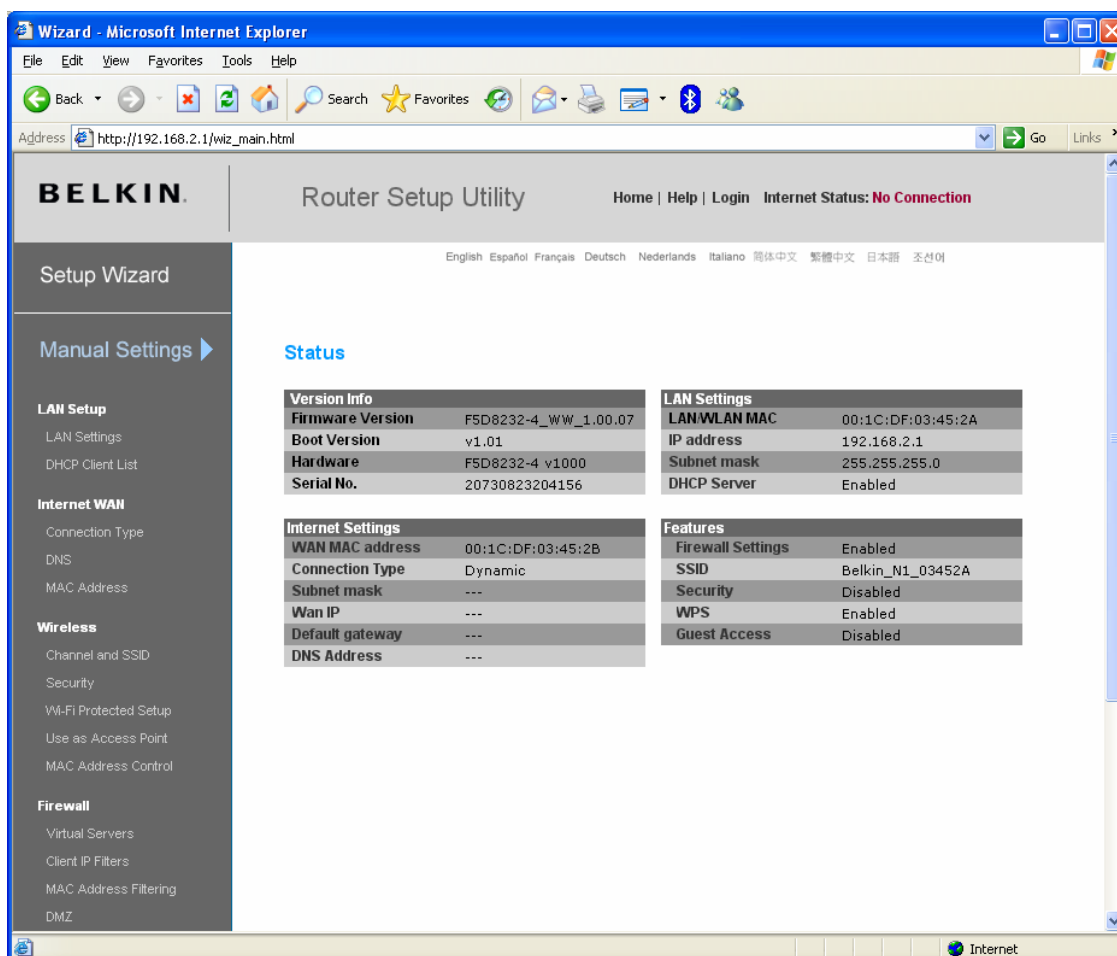
- Belkin N1 Vision router
- Power cable
- Network cable

Hardware check:

- Your computer is switched on
- The N1 Vision is switched on
- Network cable connected from computer to the N1 Vision

RESOLUTION:

- 1) Open your web browser (Internet Explorer, Mozilla FireFox, Safari etc)
- 2) In the Address Bar, delete any text and type in **192.168.2.1** or [click here](#) to open the page directly



- 3) On the left hand side, scroll down and click on **System Settings** underneath **Utilities**.

The screenshot shows a Microsoft Internet Explorer browser window displaying a router configuration page. The address bar shows `http://192.168.2.1/wiz_main.html`. The left sidebar contains a navigation menu with the following sections:

- Internet WAN**
 - Connection Type
 - DNS
 - MAC Address
- Wireless**
 - Channel and SSID
 - Security
 - Wi-Fi Protected Setup
 - Use as Access Point
 - MAC Address Control
- Firewall**
 - Virtual Servers
 - Client IP Filters
 - MAC Address Filtering
 - DMZ
 - DDNS
 - WAN Ping Blocking
 - Security Log
- Utilities**
 - Restart Router
 - Restore Factory Default
 - Save/Backup Settings
 - Restore Previous Settings
 - Firmware Update
 - System Settings** (highlighted with a red box and a red number '3')

The main content area displays the following configuration tables:

Hardware	
FSD8232-4 v1000	Serial No. 20730823204156

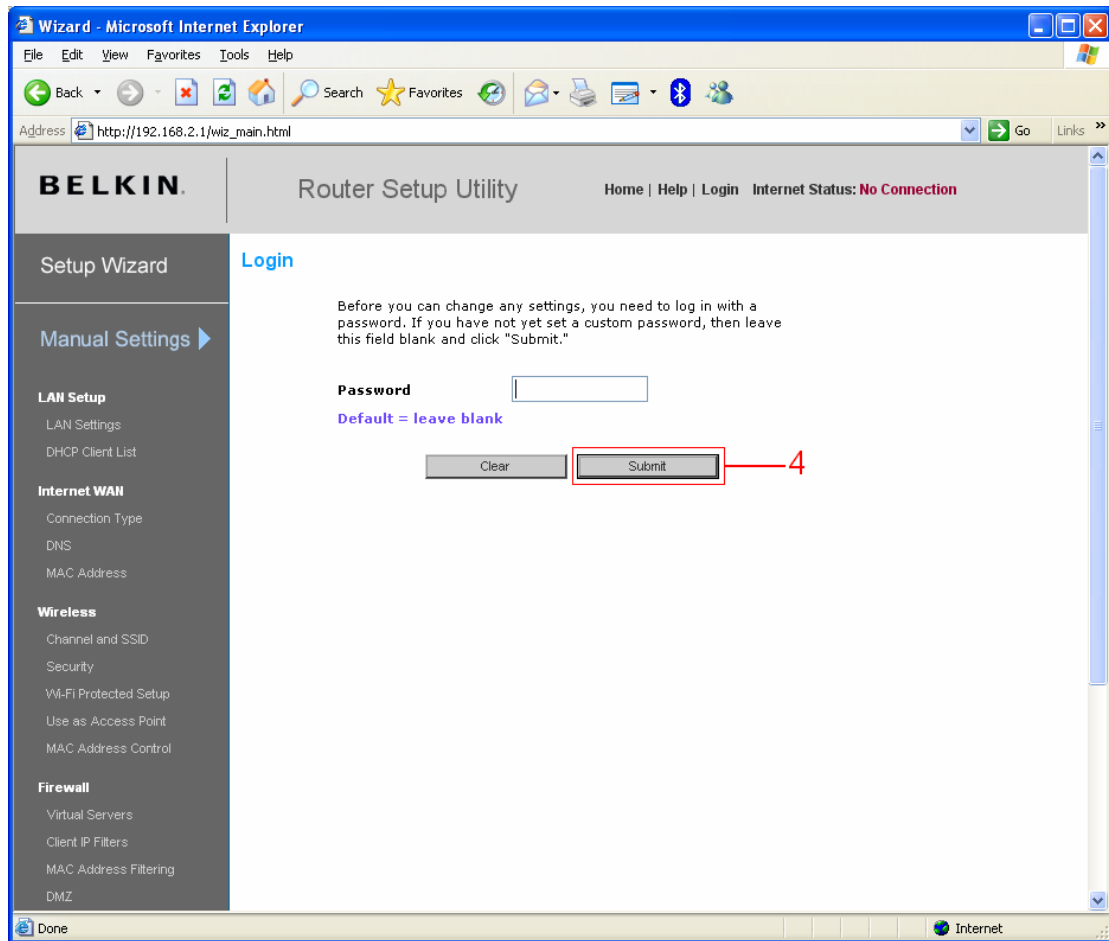
Subnet mask	
255.255.255.0	DHCP Server Enabled

Internet Settings	
00:1C:DF:03:45:2B	WAN MAC address
Dynamic	Connection Type
---	Subnet mask
---	Wan IP
---	Default gateway
---	DNS Address

Features	
Enabled	Firewall Settings
Belkin_N1_03452A	SSID
Disabled	Security
Enabled	WPS
Disabled	Guest Access

The status bar at the bottom shows `http://192.168.2.1/setup.cgi?next_file=ut_sys.html` and an Internet icon.

4) Click on **Submit** to login, there is no password by default.



- 5) Scroll down to **Time and Time Zone**. Change the **Time Zone** to your current time zone area.

The screenshot shows the Belkin Router Setup Utility web interface in Microsoft Internet Explorer. The browser address bar shows `http://192.168.2.1/setup.cgi`. The page title is "Router Setup Utility" and the status is "Internet Status: Connected".

The left sidebar contains a "Setup Wizard" and "Manual Settings" section with the following categories:

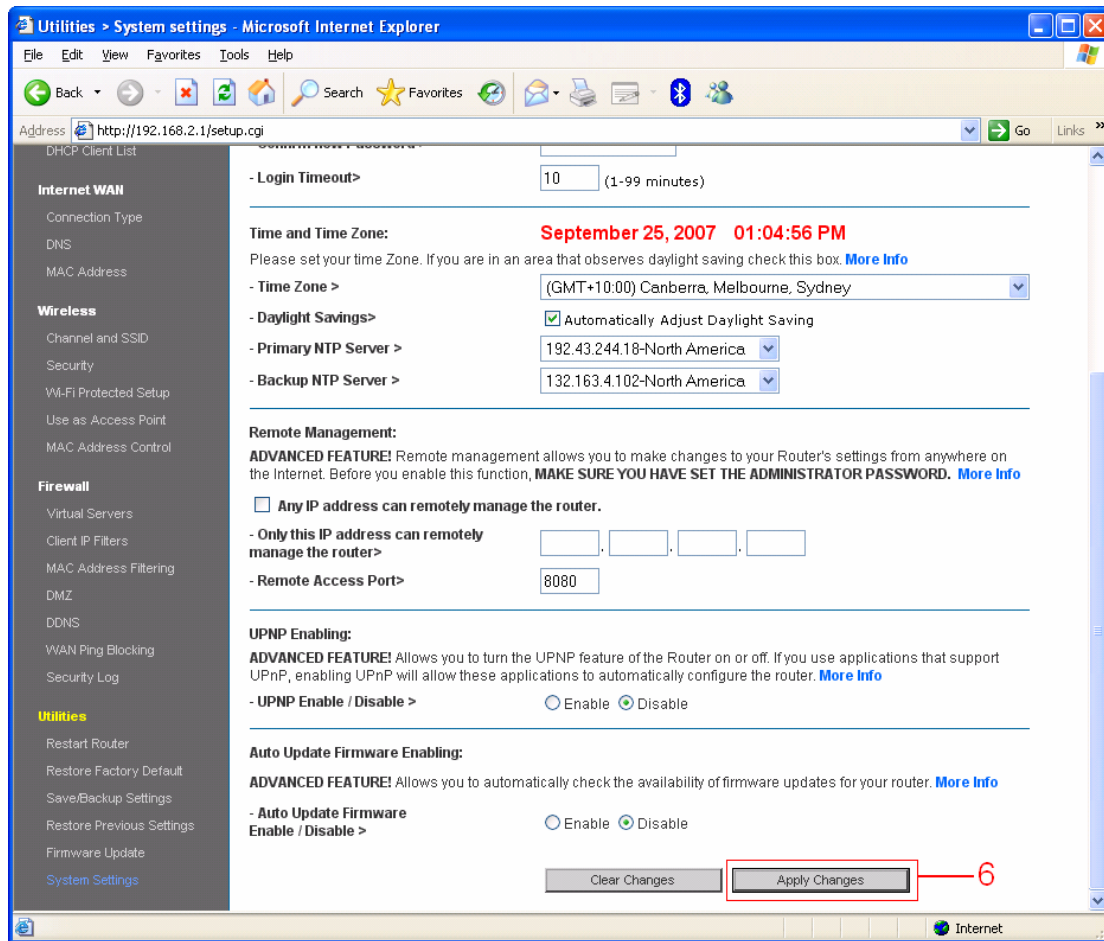
- LAN Setup
 - LAN Settings
 - DHCP Client List
- Internet WAN
 - Connection Type
 - DNS
 - MAC Address
- Wireless
 - Channel and SSID
 - Security
 - Wi-Fi Protected Setup
 - Use as Access Point
 - MAC Address Control
- Firewall
 - Virtual Servers
 - Client IP Filters
 - MAC Address Filtering
 - DMZ

The main content area is titled "Utilities > System settings". It includes the following sections:

- Administrator Password:** The Router ships with NO password entered. If you wish to add a password for more security, you can set a password here. [More Info](#)
 - Type in current Password> [input field]
 - Type in new Password> [input field]
 - Confirm new Password > [input field]
 - Login Timeout> 10 (1-99 minutes)
- Time and Time Zone:** **September 25, 2007 01:00:38 PM**
Please set your time Zone. If you are in an area that observes daylight saving check this box. [More Info](#)
 - Time Zone > (GMT+10:00) Canberra, Melbourne, Sydney [dropdown menu]
 - Daylight Savings> Automatically Adjust Daylight Saving
 - Primary NTP Server > 192.43.244.18-North America [dropdown menu]
 - Backup NTP Server > 132.163.4.102-North America [dropdown menu]
- Remote Management:**
ADVANCED FEATURE! Remote management allows you to make changes to your Router's settings from anywhere on the Internet. Before you enable this function, **MAKE SURE YOU HAVE SET THE ADMINISTRATOR PASSWORD.** [More Info](#)
 - Any IP address can remotely manage the router.
 - Only this IP address can remotely manage the router> [input field] . [input field] . [input field] . [input field]
 - Remote Access Port> 8080

A red box highlights the "Time Zone" dropdown menu, and a red number "5" points to it.

6) Click on **Apply Changes** at the bottom of this page.



Congratulations! You have successfully changed the Time Zone settings. Your N1 Vision router should now display the correct date and time.

Free Manuals Download Website

<http://myh66.com>

<http://usermanuals.us>

<http://www.somanuals.com>

<http://www.4manuals.cc>

<http://www.manual-lib.com>

<http://www.404manual.com>

<http://www.luxmanual.com>

<http://aubethermostatmanual.com>

Golf course search by state

<http://golfingnear.com>

Email search by domain

<http://emailbydomain.com>

Auto manuals search

<http://auto.somanuals.com>

TV manuals search

<http://tv.somanuals.com>