

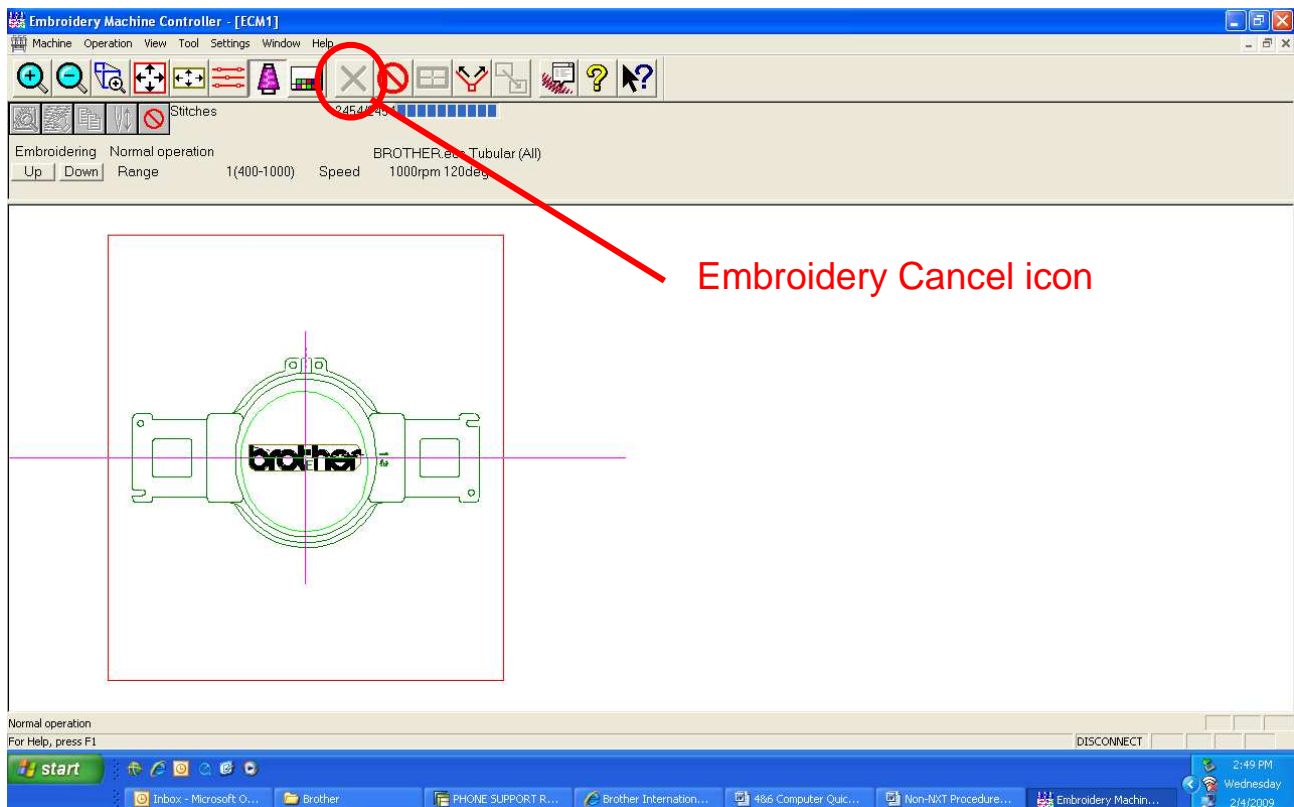
Title: Procedures for sewing a DST file using PC
Date: February 4, 2009
Models: BE-0901-PC, BE-1201-PC, BE-1204-PC, BE-1206-PC
 BES-960, BES-962, BES-1240, BES-1260, BES-1262

Preparation

1. Turn on the computer and start the Brother Embroidery Software, ECSC.
(Note: You will not see a white window appear until you turn on the machine.)
2. Turn on the Brother embroidery machine.
(Note: White window will appear.)
3. If using a USB flash drive or floppy disk please insert in to the computer.

Cancelling previous design

1. Left click on the Embroidery Cancel icon.



2. It may ask you if you want to save the design previously loaded.

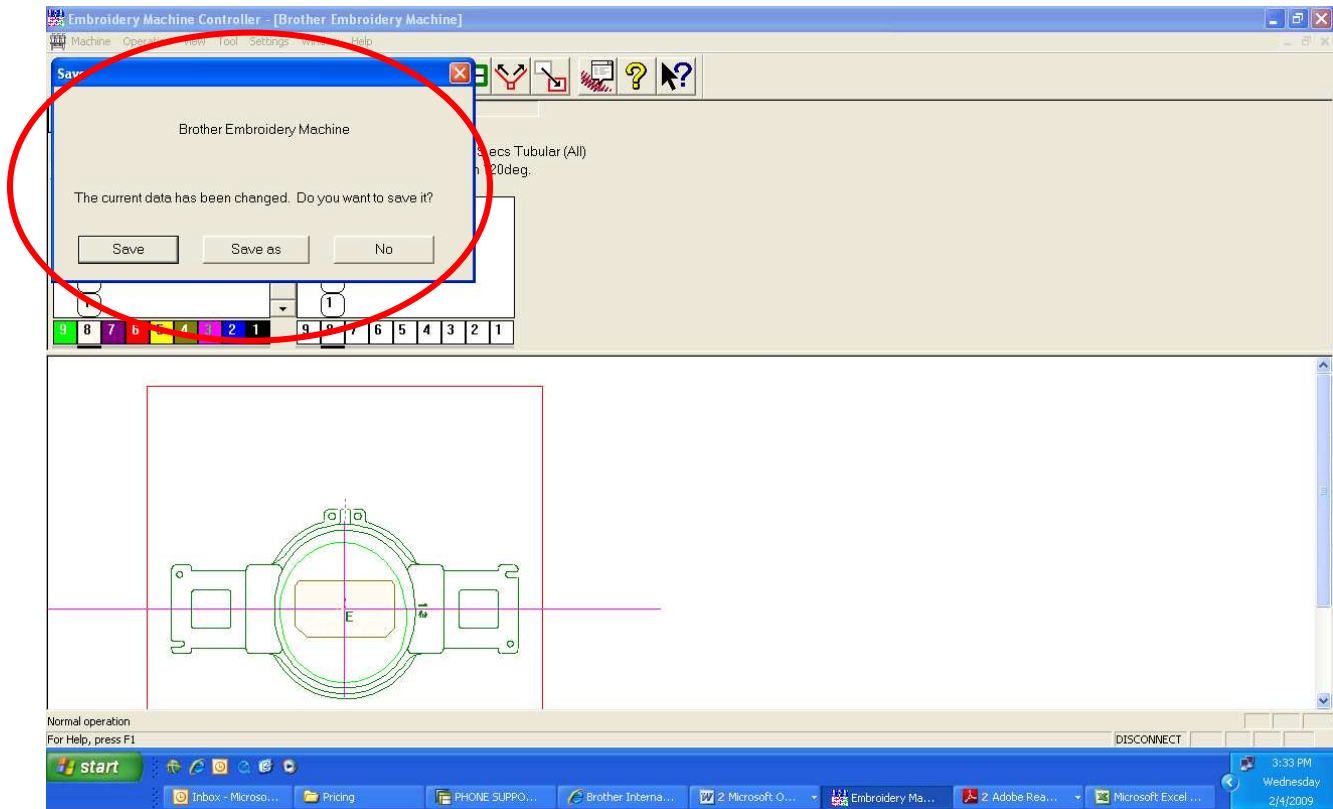
(This will save the design in an ECS format)

Save – Save design without being able to change the file name.

Save as – Save design with being able to change the file name.

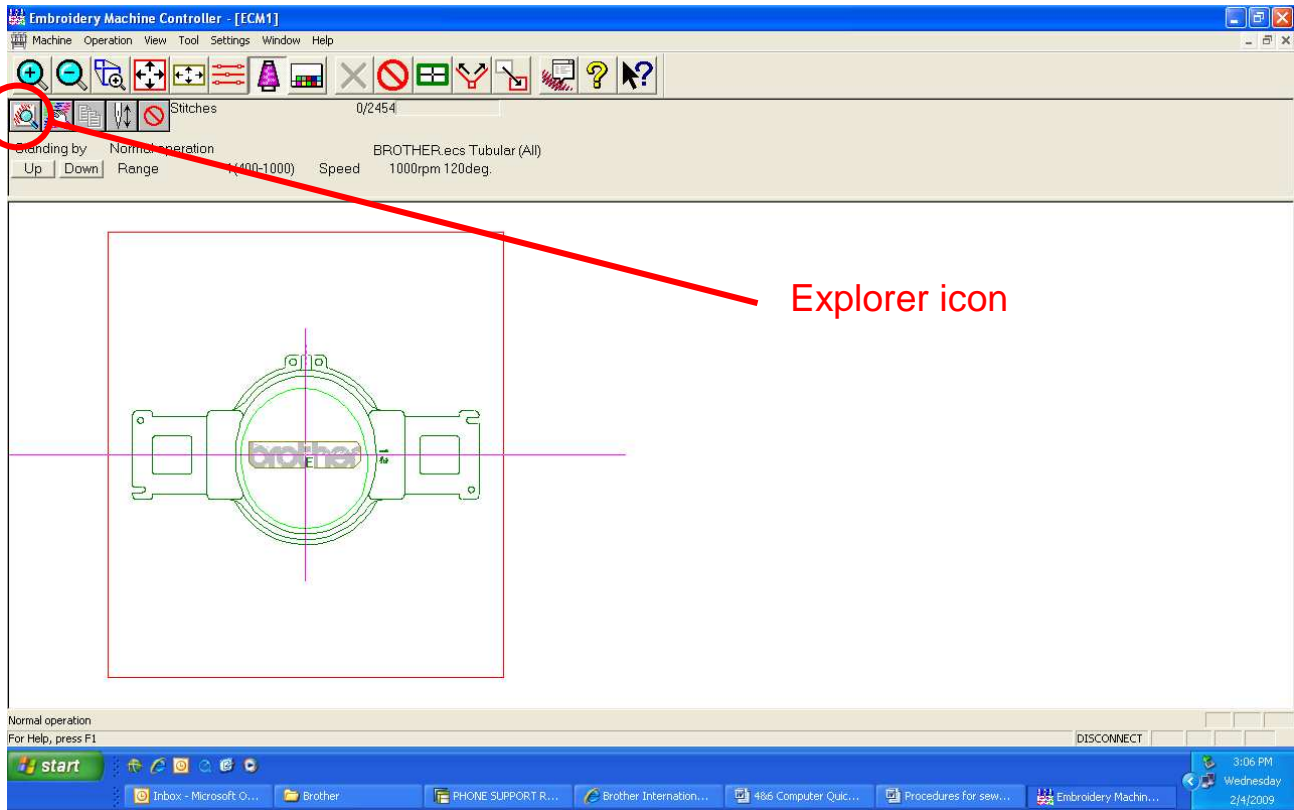
No – Will not save the design

Left click on your selection.

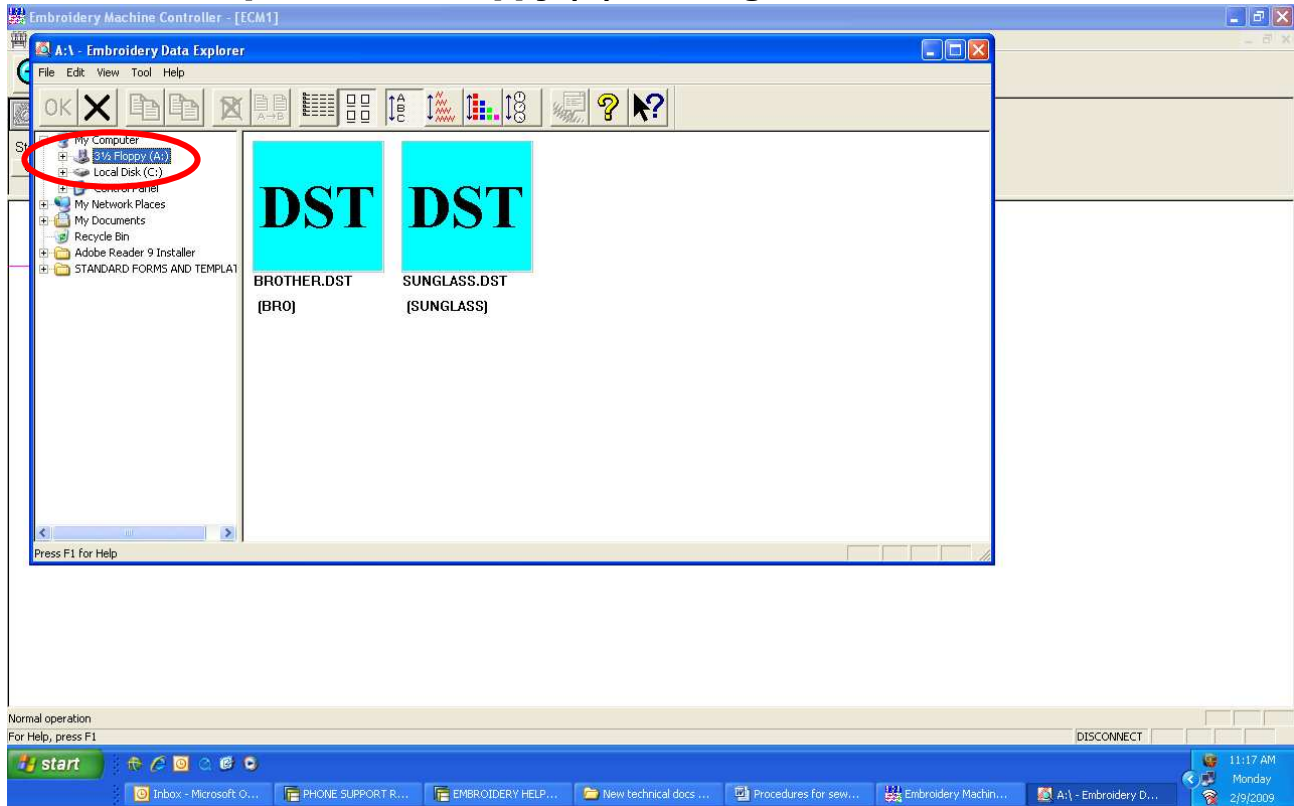


Loading a DST file

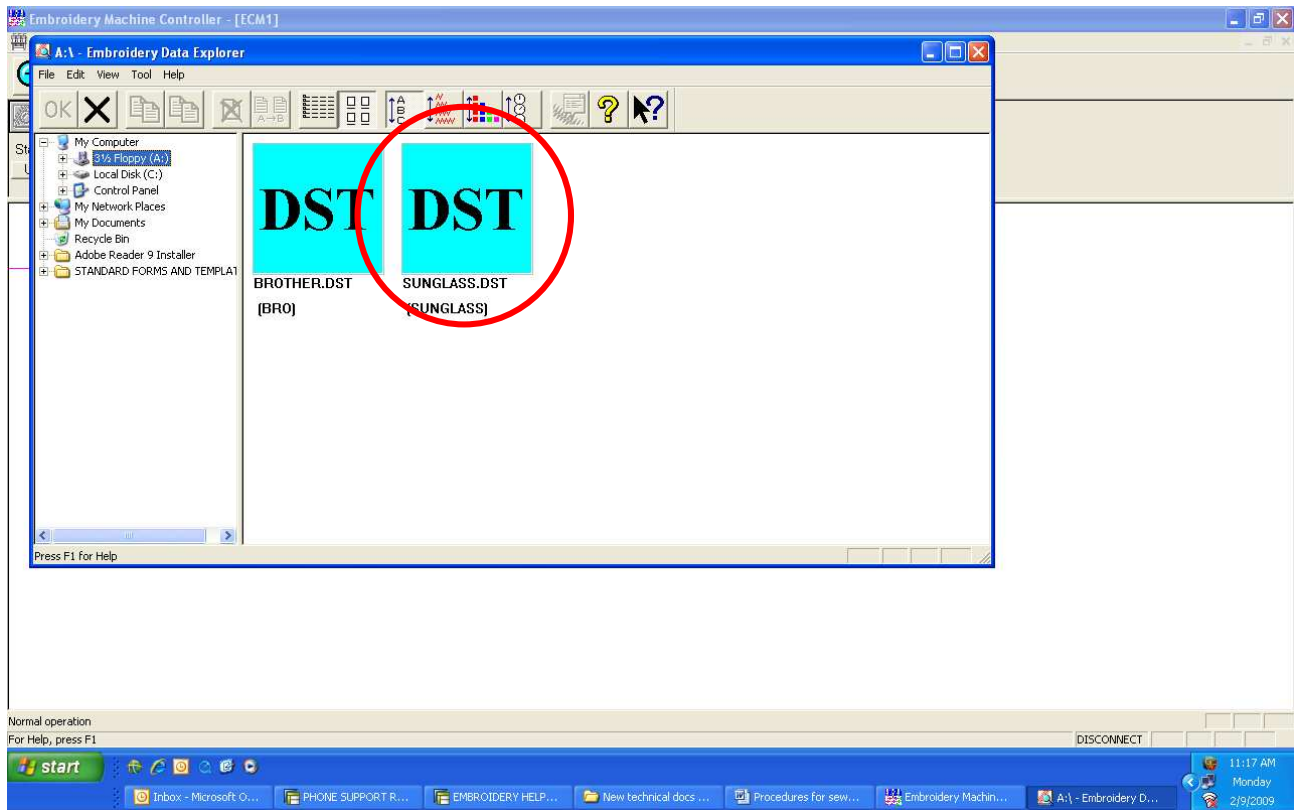
1. Left click on the Explorer icon.



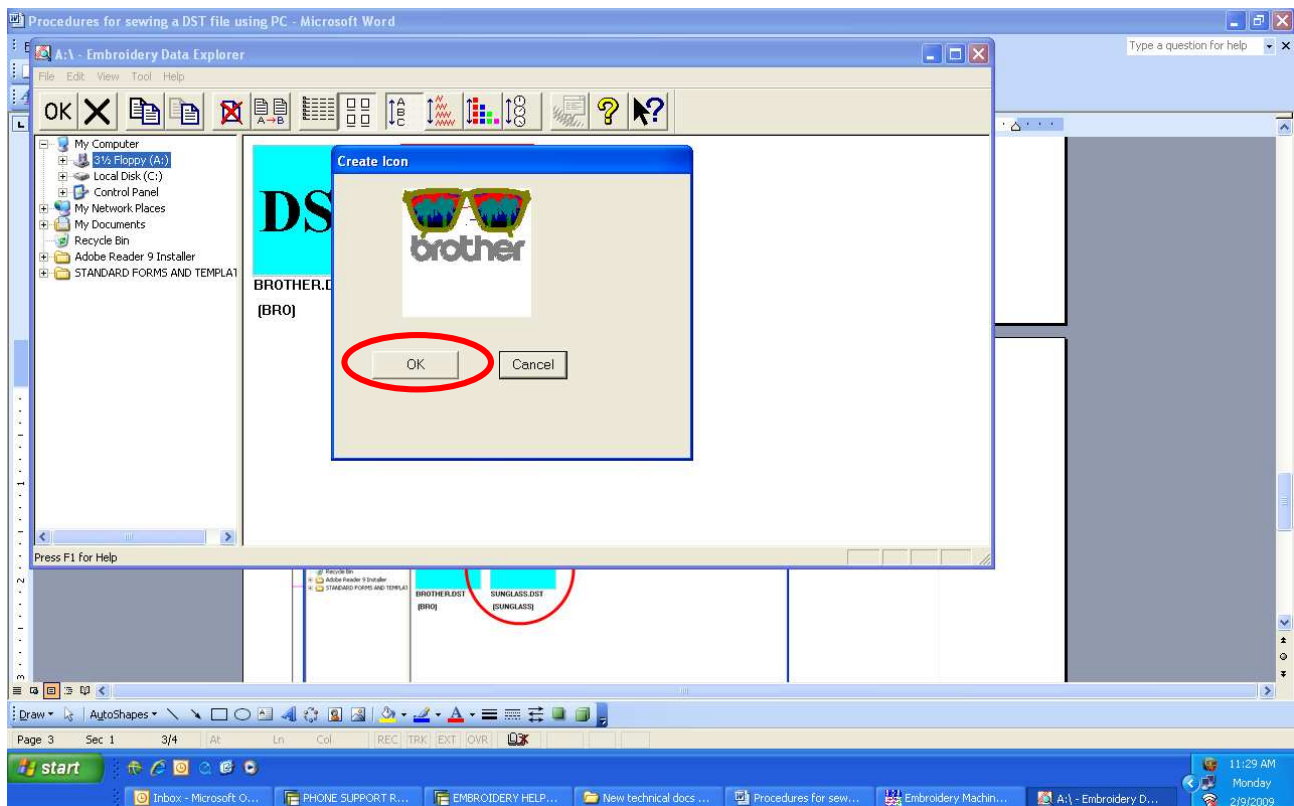
1. Left click on the drive or folder containing the DST file you want to read in. In this example the 3½ Floppy (A) is being used.



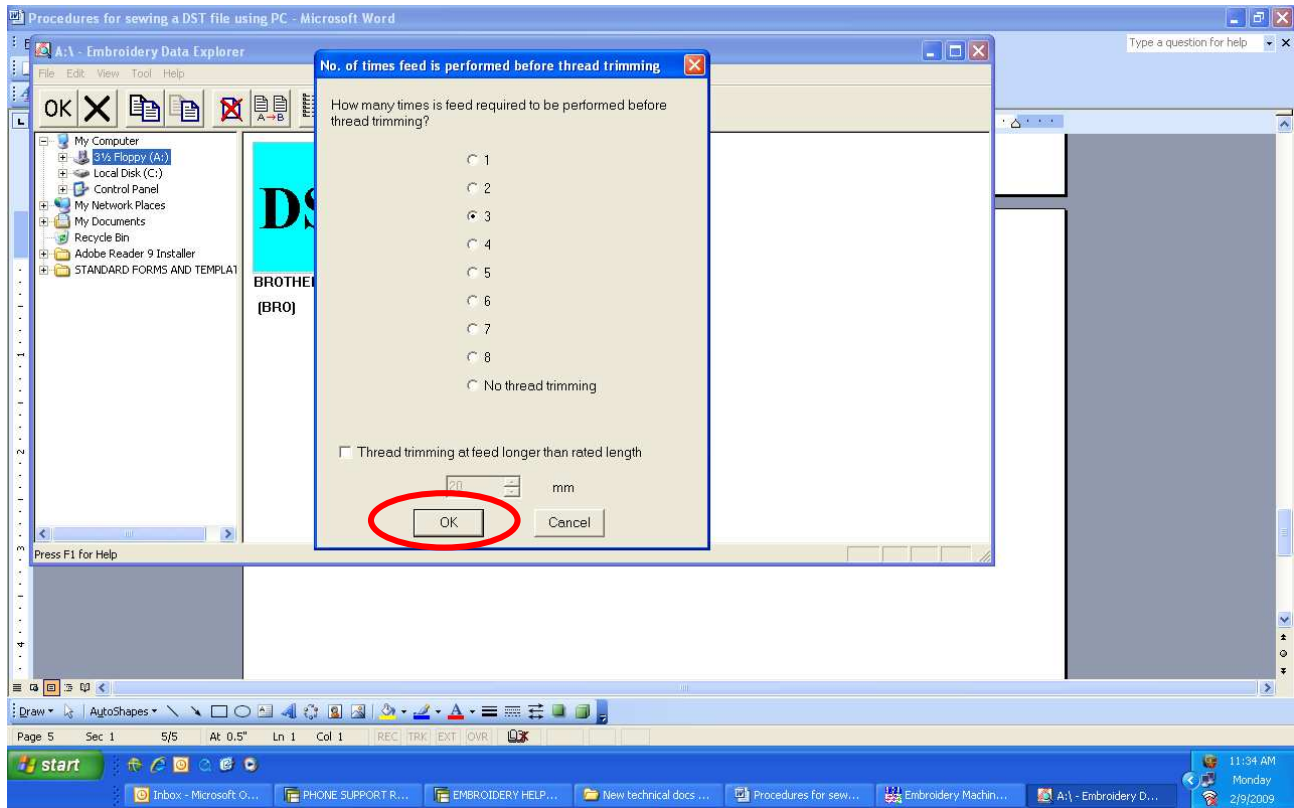
2. On the right hand side of the window, double left click on the design that you want to load.



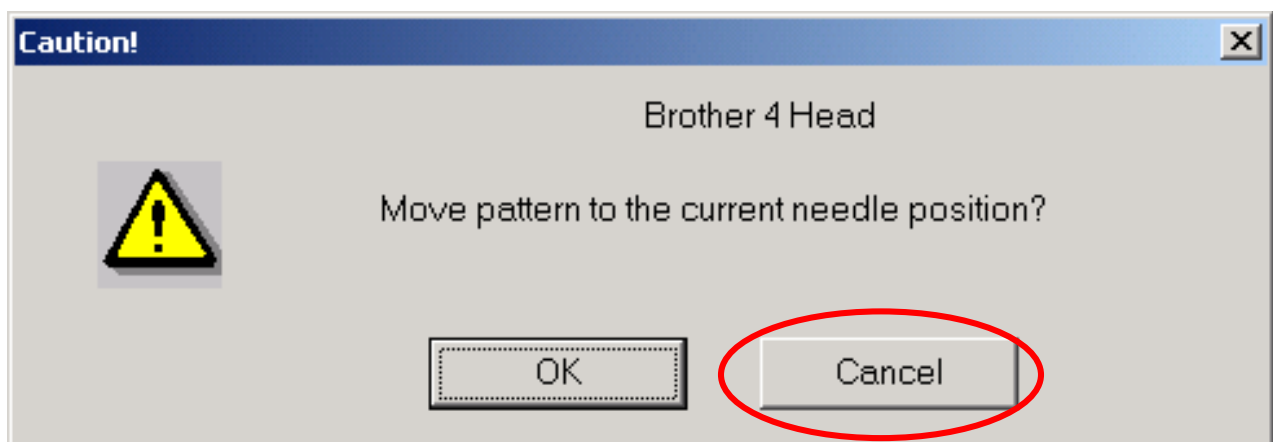
3. A “Create Icon” window will be displayed. Left click on OK if this is the design. If not, click on cancel.



4. A window appears asking “How many times is feed required to be performed before thread trimming?” The number 3 will automatically be selected. Left click on OK.



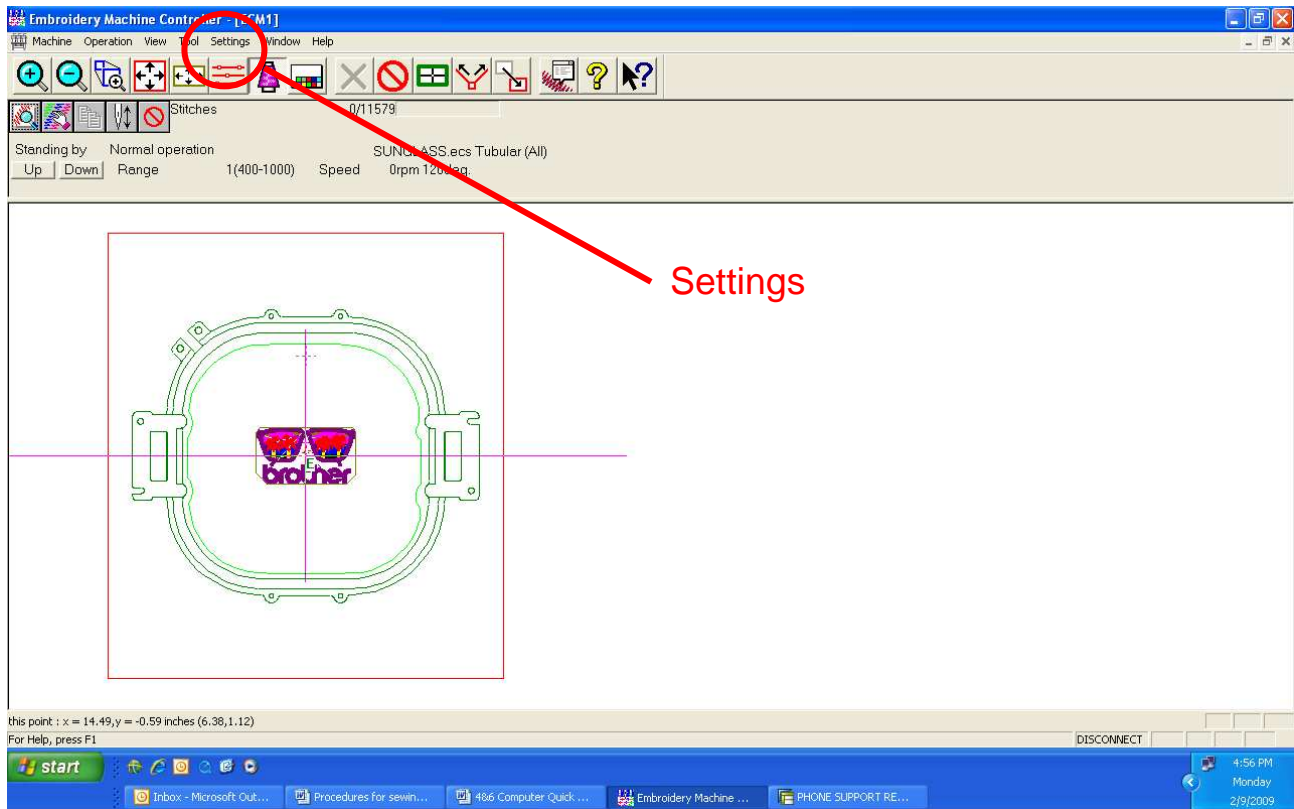
5. “Move pattern to the current needle position?” window will appear next. To have the design automatically centered in the hoop, press Cancel otherwise press OK.



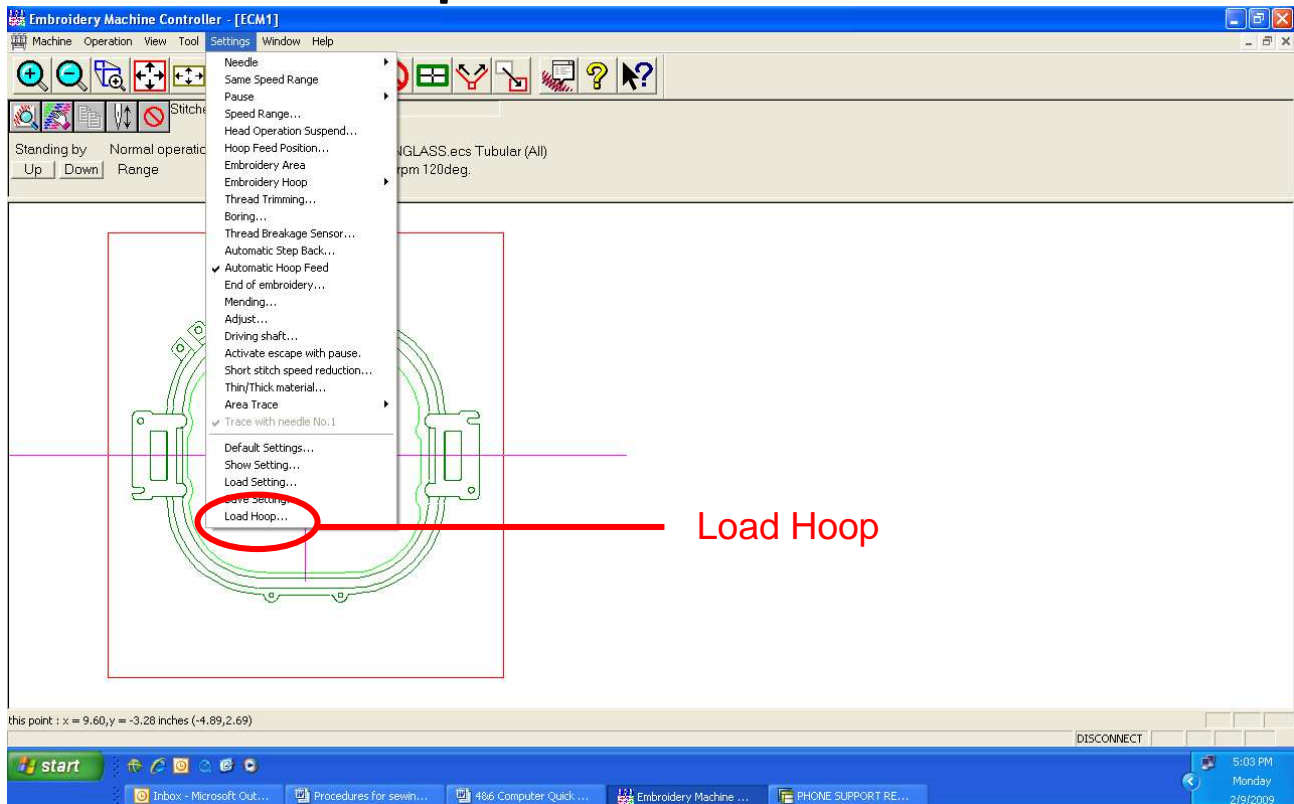
Loading embroidery hoop to use

(Note: If using some aftermarket hoops, such as a FastFrame, this step is optional.)

1. Left click on “Settings”.



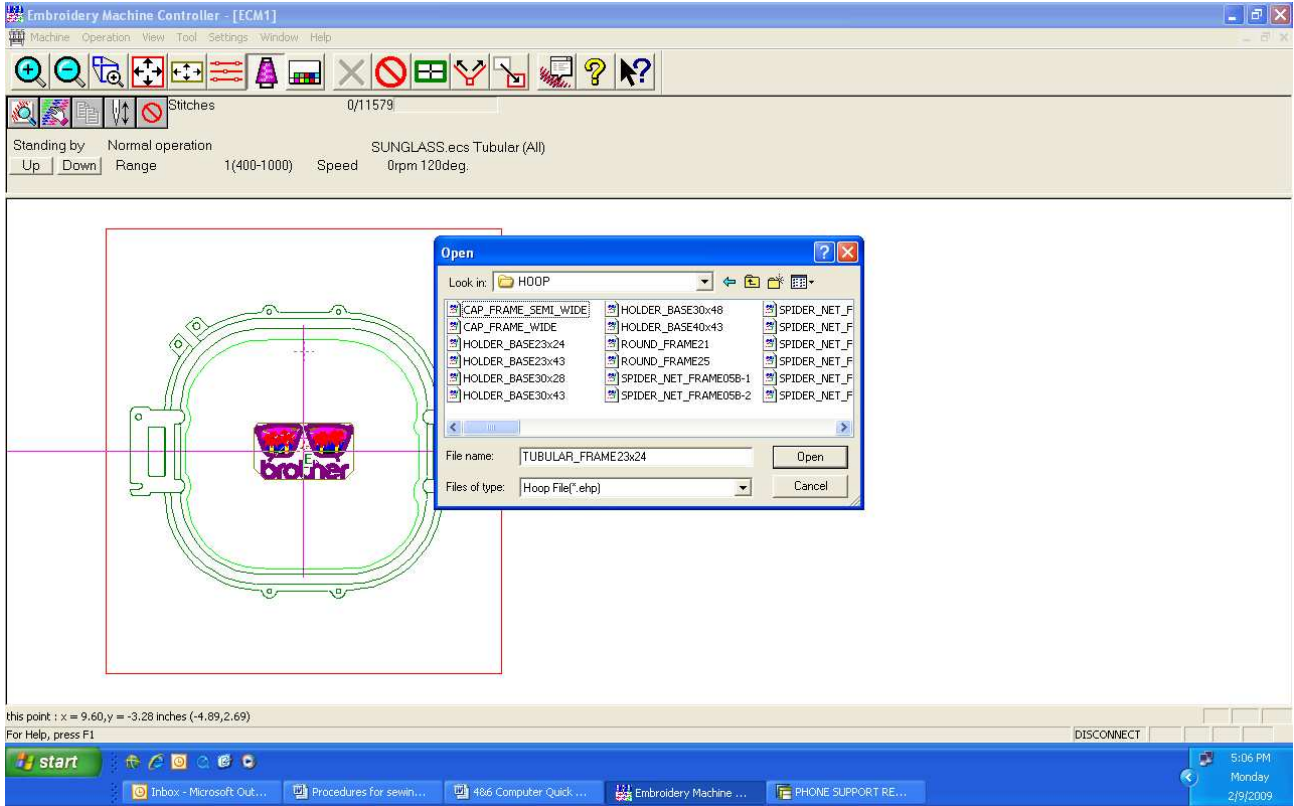
2. Left click on “Load Hoop”.



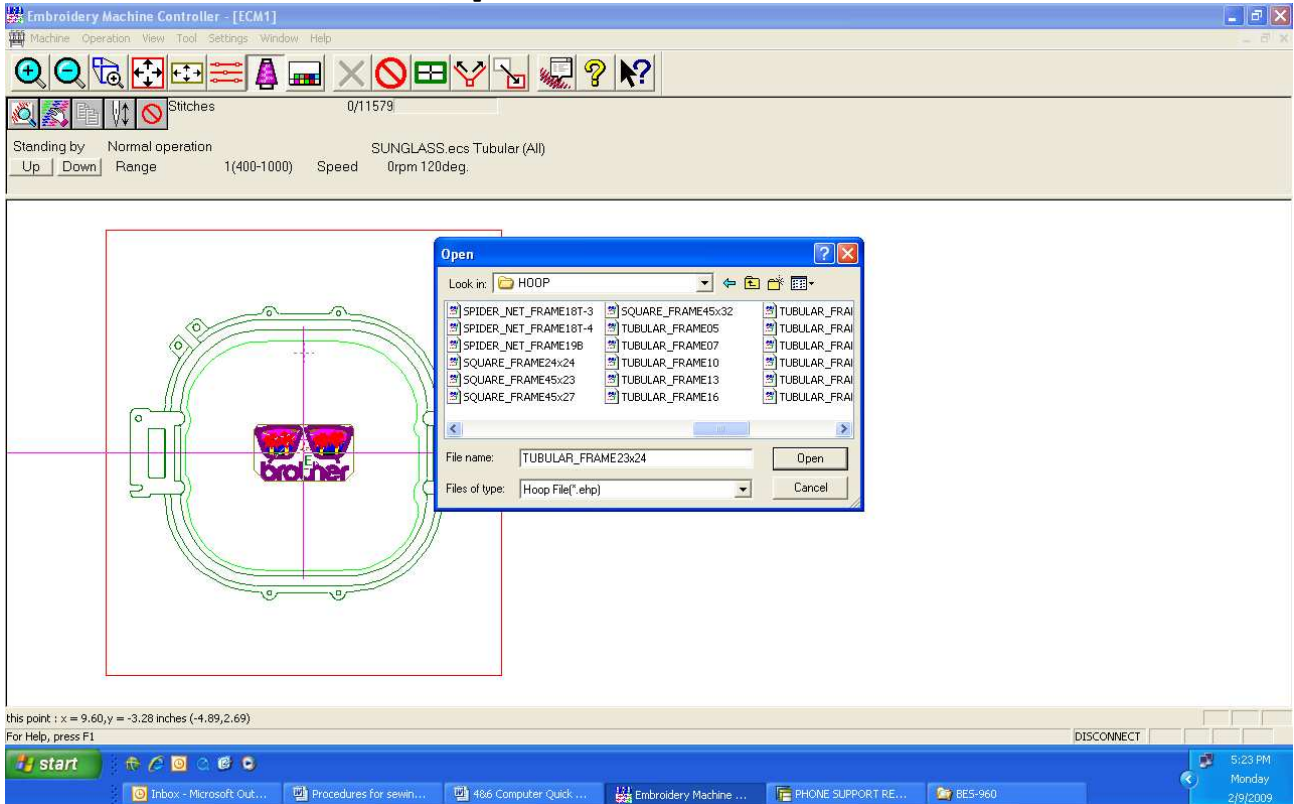
3. There are two folders containing hoop outlines, Hoop and Hoop2. Please use the correct folder for your model. See below:

(Note: These two folders are listed under C:\Program Files\BES-960.)

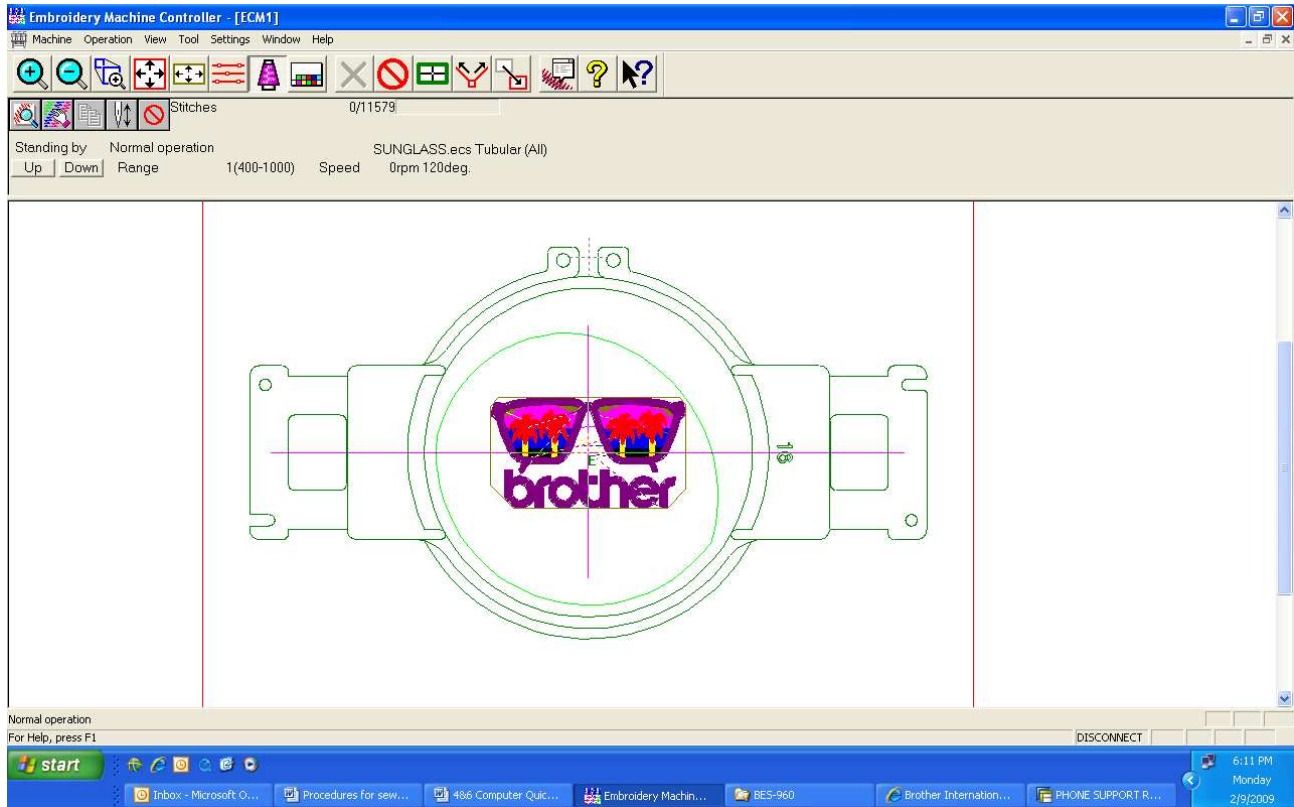
- **HOOP** - BE-0901-PC, BE-1201-PC, BES-960, BES-962, BES-1240, BES-1260, BES-1262
- **HOOP2** - BE-1204-PC, BE-1206-PC



4. Double left click on a hoop filename to load.

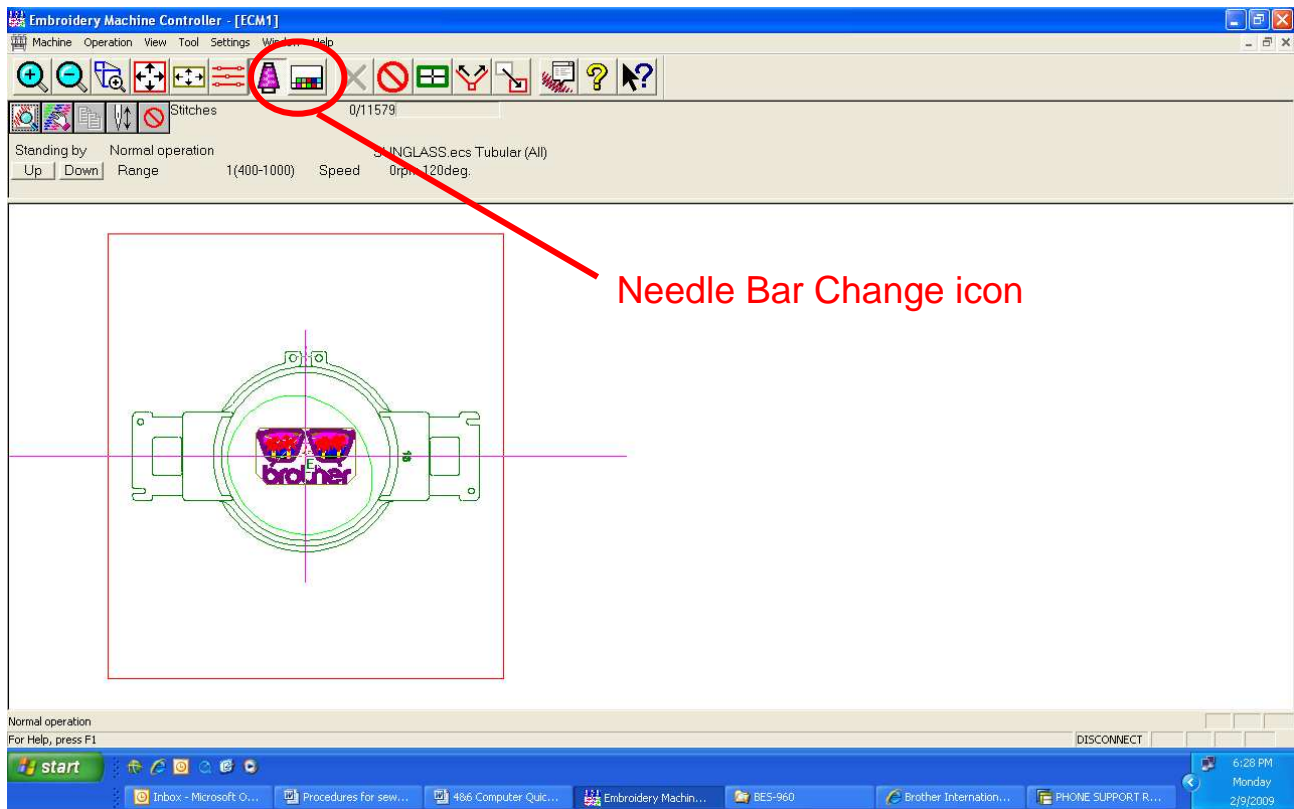


5. Try to use the smallest size hoop possible for good embroidery. Make sure that the design fits within the light green oval line inside of the dark green hoop outline. This is the actual sewing area of the hoop taking in consideration the shape of the presser foot. If any part of the design does go over the light green line, please select the next larger hoop size that you have, resize or reposition it until it does to avoid damage to the machine.

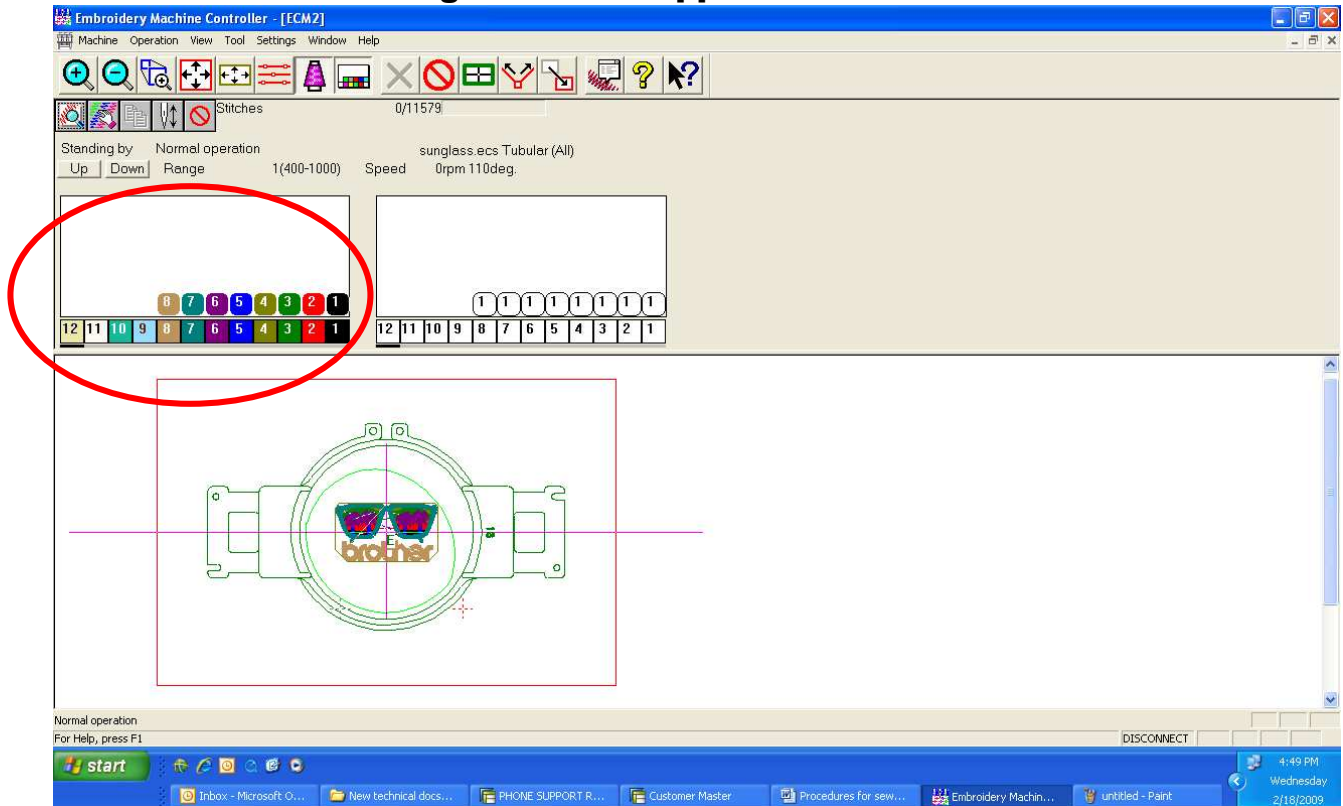


Setting color sequence

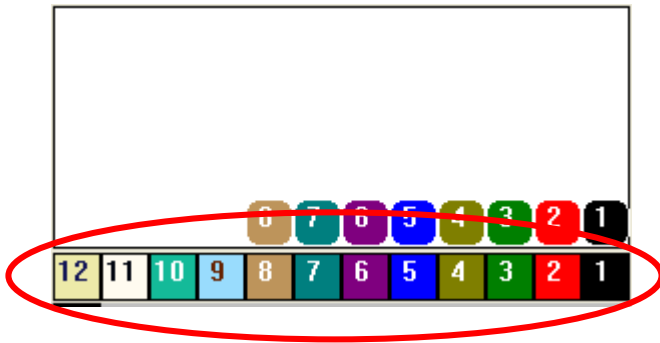
1. Left click on the “Needle Bar Change” icon.



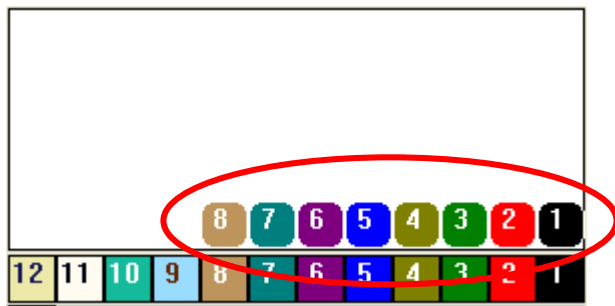
2. The “Needle Bar Change” window appears.



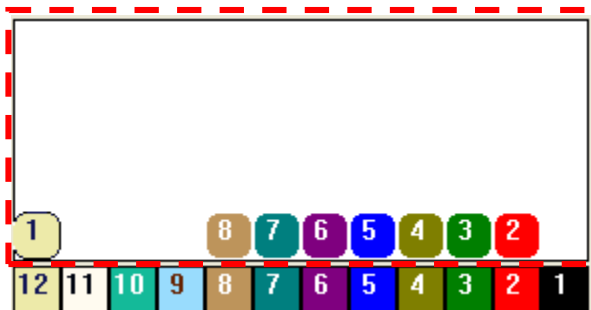
3. The bottom colors, of the Needle Bar Change window, (1-12) represent the 12 needles on the machine.



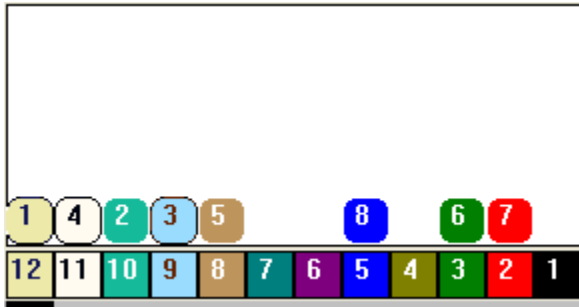
4. In this example the design has 8 color changes. The top colors (1-8) represent the color changes in the design.



5. To select the 1st color of the design to sew needle 12, you click and drag the color change bubble over needle 12. When doing this, please make sure and keep the bubble within the color change window as indicated by the red dashed line or your change will not take effect.



6. Now just drag each color change bubble over the needle on the machine that you want that color to be.



7. As you move each bubble over a needle you will notice that your design changes color to reflect the changes you have made.

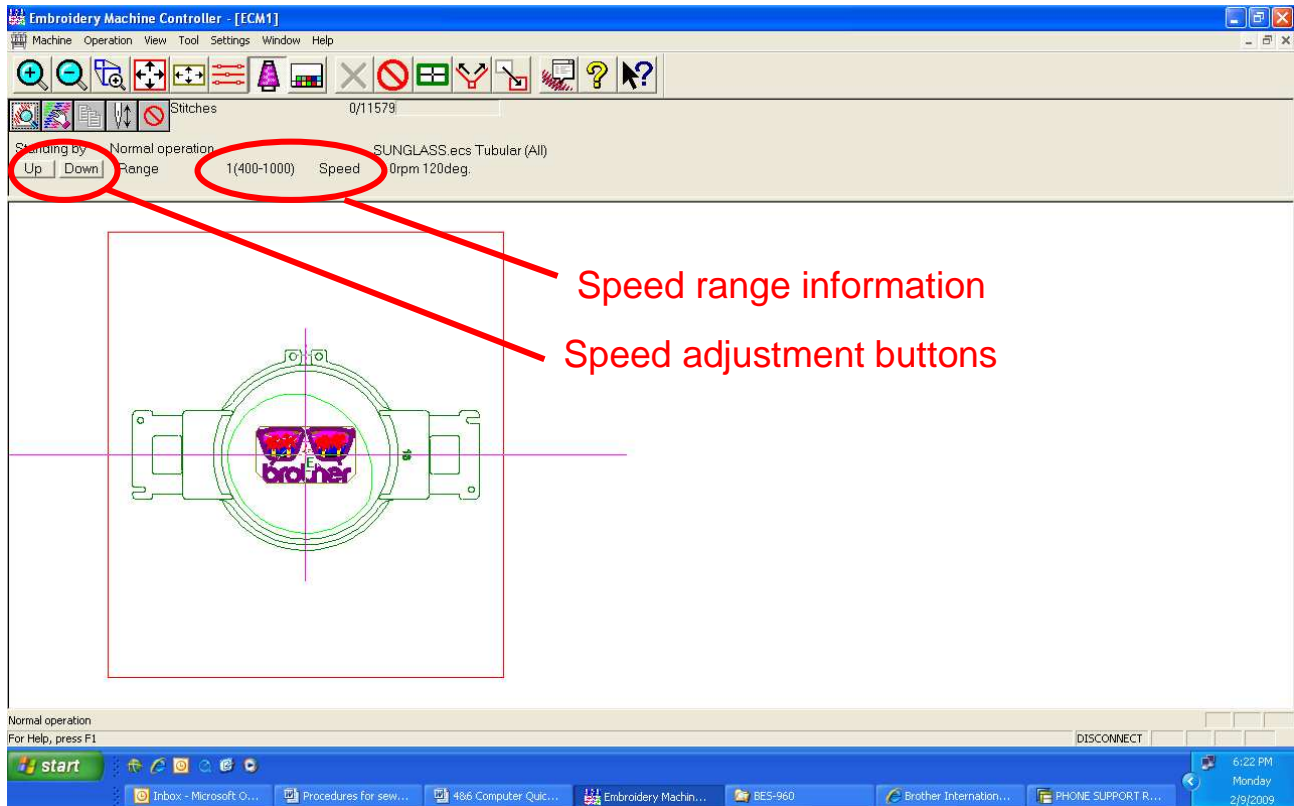


8. You can click on the “Needle Bar Change” icon to make this window disappear.

Setting sewing speed

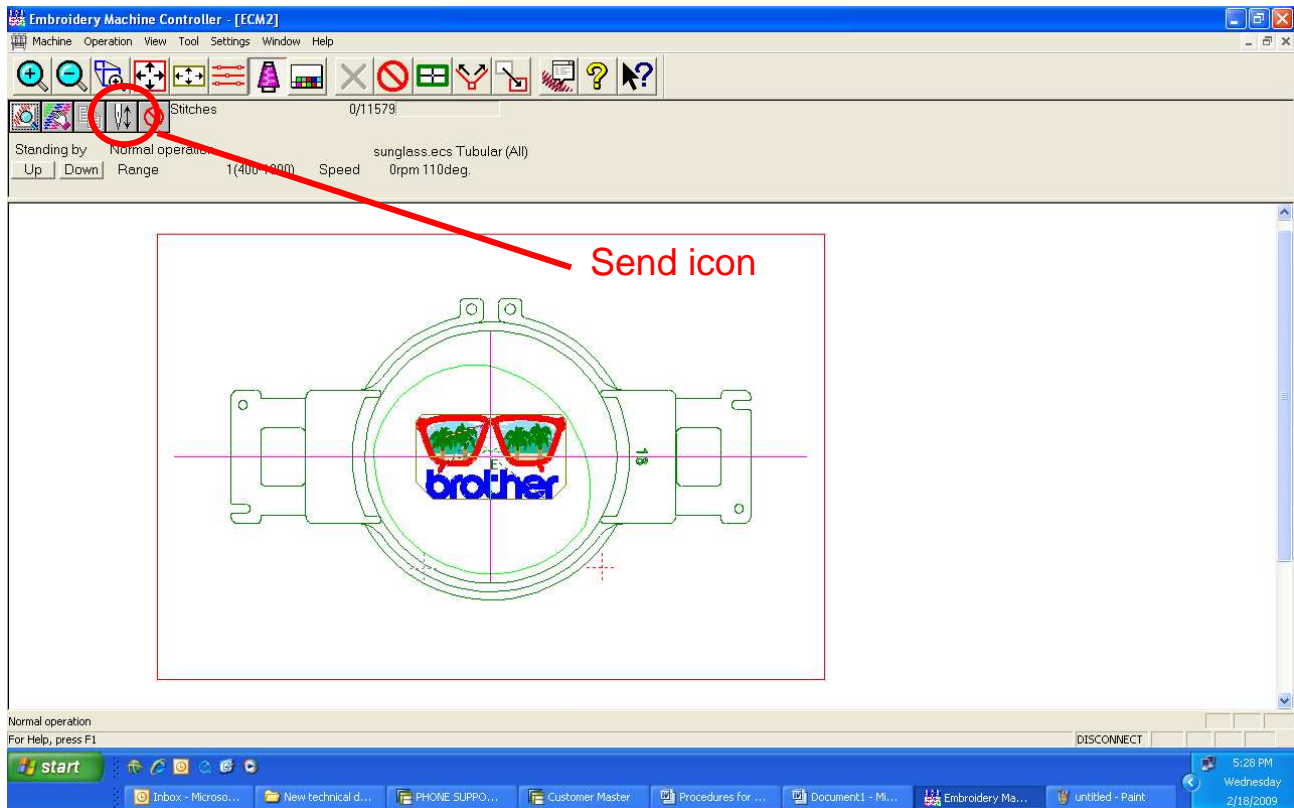
1. All DST files loaded in to the software will default to the fastest “Speed Range”. Left click on the “Down” button to adjust if needed.

(Note: 800spm for tubular and 700spm are good speed ranges to start with.)



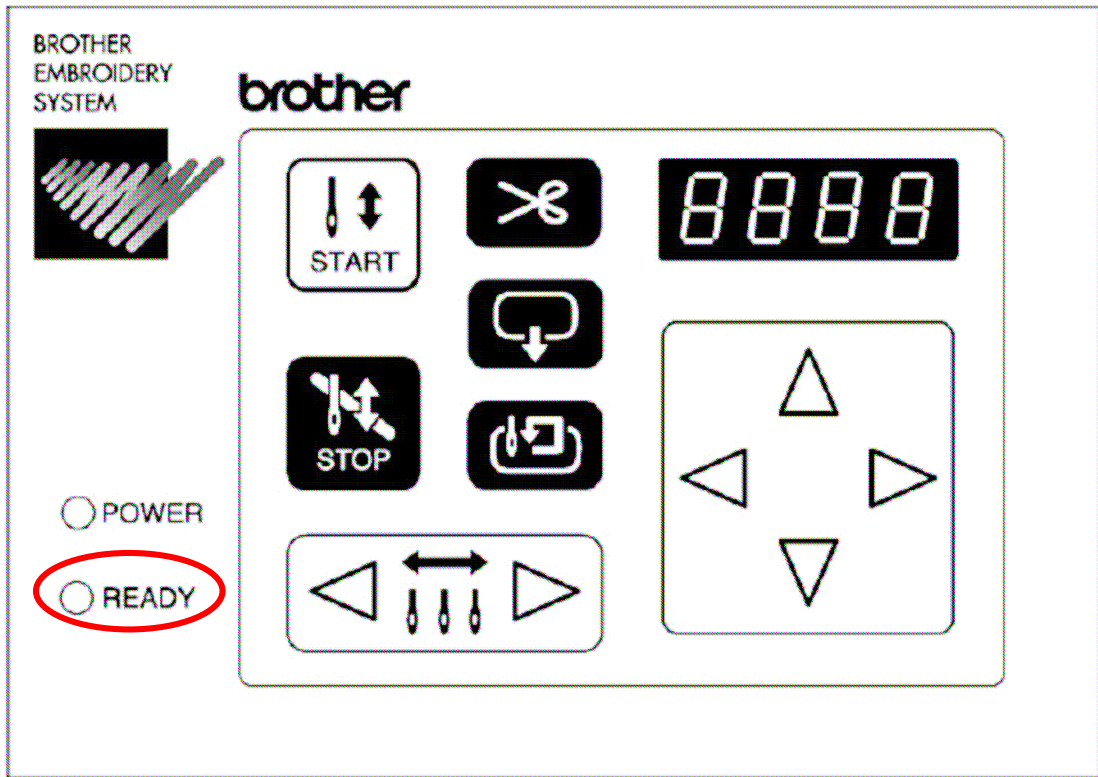
Sending design to the machine

1. Left click on the “Start” icon to send the design to machine. You are now finished on the computer.



Operations on the machine panel

1. The “Ready” light should be on if the design was sent to the machine.



2. If “HOOP” is displayed on the machine panel, press .

(Note: This will move the pantograph to match the position of the design in the hoop from the computer.)

3. To trace the design in the hoop, press .

(Note: This step is to reconfirm that the design does fit in the hoop attached to the machine.)

4. Press the  button to start the machine.

Free Manuals Download Website

<http://myh66.com>

<http://usermanuals.us>

<http://www.somanuals.com>

<http://www.4manuals.cc>

<http://www.manual-lib.com>

<http://www.404manual.com>

<http://www.luxmanual.com>

<http://aubethermostatmanual.com>

Golf course search by state

<http://golfingnear.com>

Email search by domain

<http://emailbydomain.com>

Auto manuals search

<http://auto.somanuals.com>

TV manuals search

<http://tv.somanuals.com>