

# Windows Vista™ Installation Guide

---

Before you can use the machine, you must set up the hardware and install the driver. Please read the 'Quick Setup Guide' and this 'Windows Vista™ Installation Guide' for set up and installation instructions.

## STEP 1

### Setting Up the Machine

Please follow the steps in STEP 1 Setting Up the Machine in the Quick Setup Guide first. Then return to STEP 2 Installing the driver & software in this installation guide.



## STEP 2

### Installing the Driver & Software





Please follow the steps in this Windows Vista™ Installation Guide for driver & software installation instructions.




## Setup is Complete!

Keep the 'Quick Setup Guide', 'Windows Vista™ Installation Guide' and the supplied CD-ROM in a convenient place for quick and easy reference at all times.

## Symbols used in this guide

 Warning	 Note	 Quick Setup Guide	 Caution
<p>Warnings tell you what to do to prevent possible personal injury.</p>	<p>Notes tell you how you should respond to a situation that may arise or give tips about how the current operation works with other features.</p>	<p>Indicates reference to the Quick Setup Guide.</p>	<p>Cautions specify procedures you must follow or avoid to prevent possible damage to the machine or other objects.</p>

 Improper Setup
<p>Improper Setup icons alert you to devices and operations that are not compatible with the machine.</p>

## Before Starting

---

Before using this manual.....	2
Supplied CD-ROM for Windows Vista™ .....	2

## Installing the Driver & Software

---

For USB Interface Users .....	4
How to connect the machine to your computer .....	6
For Network Interface Users .....	10

## For Network Users

---

BRAdmin Light utility .....	17
Installing the BRAdmin Light configuration utility .....	17
Setting your IP address, Subnet Mask and Gateway using BRAdmin Light .....	17

## Other Information

---

ScanSoft™ PaperPort™ 11SE with OCR by NUANCE™ .....	18
Computer requirements .....	19

## Before using this manual

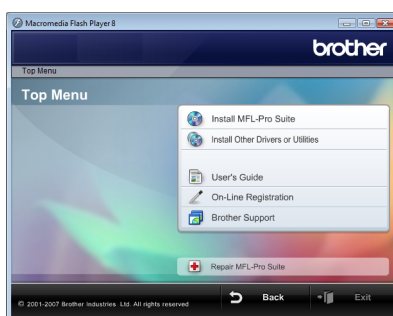
This manual is for Windows Vista™ users only. This installation guide explains how to install the MFL-Pro Suite software and multifunction drivers for Windows Vista™ and other information about Windows Vista™. Before installing the driver and software, please follow the steps in the **Getting Started** section and **STEP1 Setting Up the Machine** in the Quick Setup Guide. After you complete the initial setup, follow the steps in this guide for installing the MFL-Pro Suite and drivers. You can also find other information about the machine in the Quick Setup Guide.



See the Quick Setup Guide first.

## Supplied CD-ROM for Windows Vista™

You can find the information listed below on the Windows Vista™ CD-ROM.



### Install MFL-Pro Suite

You can install the MFL-Pro Suite software and multifunction drivers.



### Install Other Drivers or Utilities

You can install additional MFL-Pro Suite software utilities, install without ScanSoft™ PaperPort™ 11SE with OCR by NUANCE™, install the printer driver only.



### User's Guide

View the Software User's Guide and Network User's Guide (only available for models with built-in network). The Software User's Guide includes instructions for features available when connected to a computer. (eg. Printing and scanning details)



### On-Line Registration

Register your machine from the Brother Product Registration page.



### Brother Support

View contact information for Brother Customer Service and how to find a Brother Authorized Service Center. View our web site for original/genuine Brother supplies at <http://www.brother.com/original/> for Supplies Information.



### Repair MFL-Pro Suite (USB only)

If an error occurred during the installation of the MFL-Pro Suite, use this selection to automatically repair and re-install the MFL-Pro Suite.

Follow the instructions on this page for the interface you are going to use.  
For the latest drivers, documentation, and to find the best solution for your problem, access the Brother Solution Center directly from the CD-ROM / Driver or visit <http://solutions.brother.com>.

## Windows®

**For USB Interface Users** ..... 4



■ **How to connect the machine to your computer**..... 6

**For Network Interface Users** ..... 10

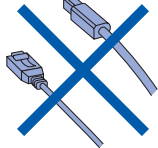


## For USB Interface Users

Windows®  
USB

### ⊘ Improper Setup

**DO NOT** connect the interface cable. Connecting the interface cable is done when installing the driver.



### Important

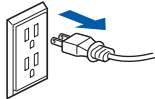
Make sure that you have finished the instructions from **STEP 1 Setting Up the Machine** in the Quick Setup Guide.

### Note

- Please close any applications running before installing MFL-Pro Suite.
- If your machine has media drives (slots), make sure there are no memory cards in the media drive of the machine.

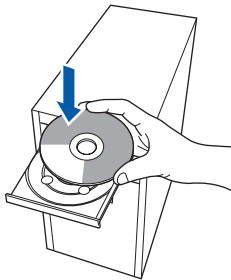
### Installing the driver and connecting the machine to your computer

- 1 Unplug the machine from the AC outlet and from your computer, if you already connected an interface cable.



- 2 Turn on your computer. (You must be logged on with Administrator rights.)

- 3 Put the supplied CD-ROM for Windows Vista™ into your CD-ROM drive. If the model name screen appears, choose your machine. If the language screen appears, choose your language.



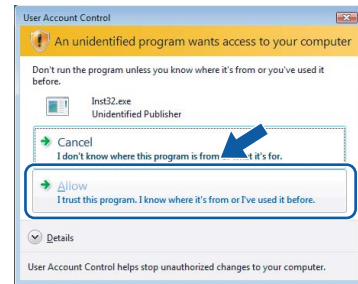
- 4 The CD-ROM main menu will appear. Click **Install MFL-Pro Suite**.



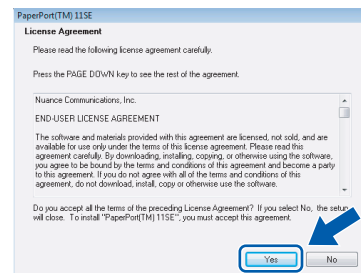
If this window does not appear, use Windows® Explorer to run the **start.exe** program from the root folder of the Brother CD-ROM.

### Note

If the **User Account Control** screen appears, click **Allow**.

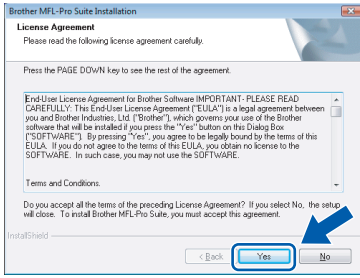


- 5 After reading and accepting the ScanSoft™ PaperPort™ 11SE License Agreement, click **Yes**.

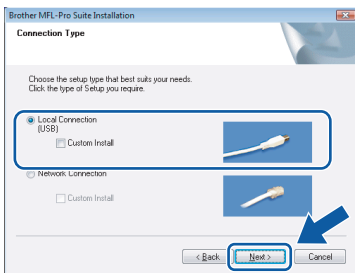


- 6 The installation of ScanSoft™ PaperPort™ 11SE will automatically start and is followed by the installation of MFL-Pro Suite.

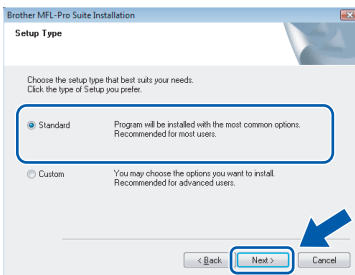
**7** When the Brother MFL-Pro Suite Software License Agreement window appears, click **Yes** if you agree to the Software License Agreement.



**8** If this screen appears, choose **Local Connection**, and then click **Next**. The installation continues.

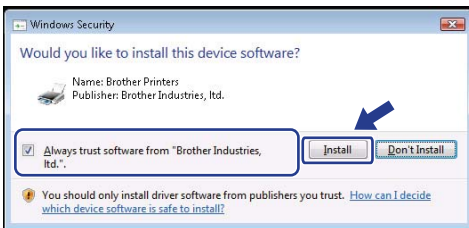


If this screen appears, choose **Standard**, and then click **Next**. The installation continues.

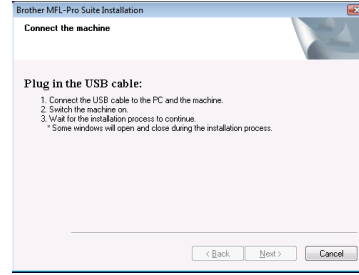


**Note**

If this screen appears, click the check box and click **Install** to complete the installation properly.



**9** When this screen appears, go to the next step.



**10** Go to the “How to connect the machine to your computer” steps for your model.

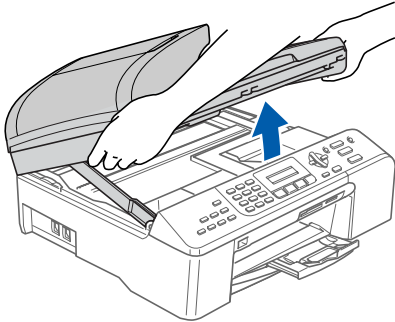
Model Number	Page Number
DCP-130C, MFC-240C, MFC-440CN, MFC-5460CN, MFC-5860CN	page 6
DCP-7020, DCP-8060, DCP-8065DN, MFC-7220, MFC-7225N, MFC-8460N, MFC-8660DN, MFC-8860DN	page 7
MFC-3360C	page 8


Windows®  
USB

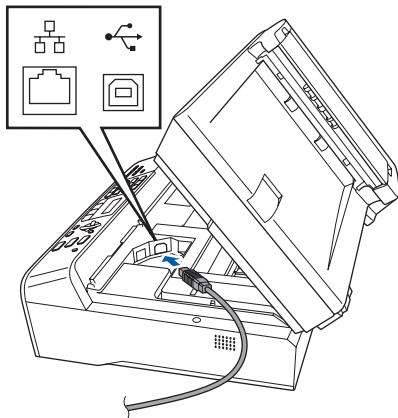
## How to connect the machine to your computer

For DCP-130C, MFC-240C, MFC-440CN, MFC-5460CN and MFC-5860CN users  
(The illustrations are based on MFC-5460CN.)

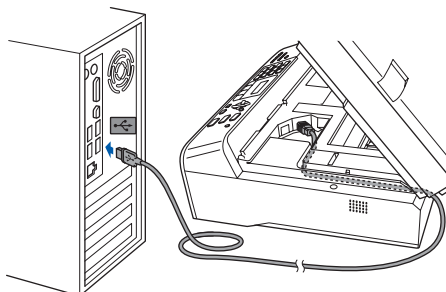
- 1 Lift the scanner cover until it locks securely into the open position.



- 2 Connect the USB cable to the USB socket marked with a  symbol. You will find the USB socket inside the machine on the right as shown below.



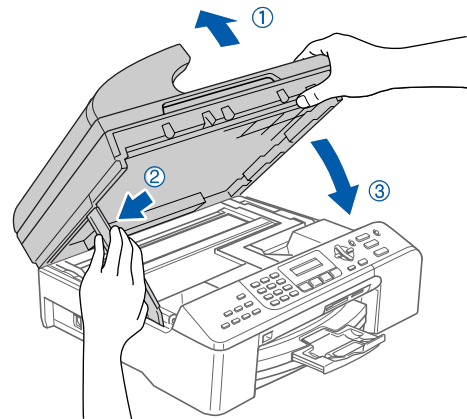
- 3 Carefully guide the USB cable into the trench as shown below, following the trench around and toward the back of the machine. Then, connect the cable to your computer.



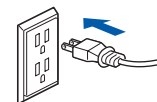
### ⊘ Improper Setup

- DO NOT connect the machine to a USB port on a keyboard or a non-powered USB hub. Brother recommends that you connect the machine directly to your computer.
- Make sure that the cable does not restrict the cover from closing, or an error may occur.
- Make sure you use a USB 2.0 cable that is no longer than 6 feet long (2 meters).

- 4 Lift the scanner cover to release the lock (①). Gently push the scanner cover support down (②) and close the scanner cover (③).



- 5 Turn on the machine by connecting the power cord.



The installation of the Brother drivers will automatically start. The installation screens appear one after another. **Please wait, it will take a few seconds for all the screens to appear.**

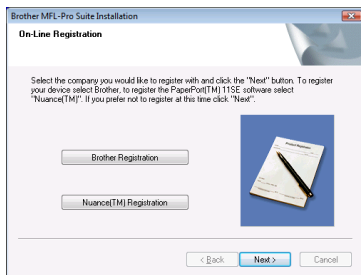
### ⊘ Improper Setup

**DO NOT** try to cancel any of the screens during this installation.

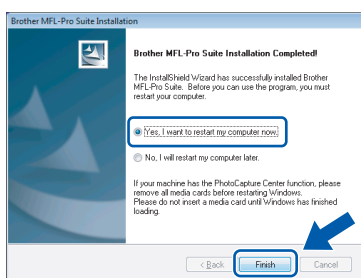




- 6** When the **On-Line Registration** screen is displayed, make your selection and follow the on-screen instructions.



- 7** Click **Finish** to restart your computer. After restarting the computer, you must be logged on with Administrator rights.



**Note**

After restarting the computer, the *Installation Diagnostics* will run automatically. If the installation is unsuccessful, the installation results window will be shown. If the Diagnostics shows a failure, please follow the on-screen instructions or read the on-line help and FAQs in **Start/All Programs/Brother/XXX-XXXX** (where xxx-xxxx is your model name).

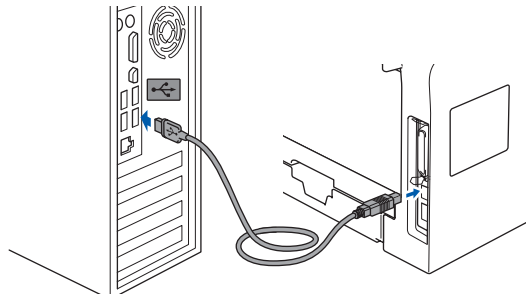
**OK!** The MFL-Pro Suite has been installed completely.

**Note**

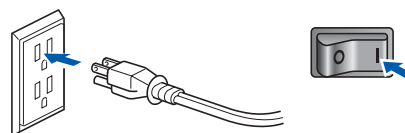
MFL-Pro Suite includes the *Printer Driver, Scanner Driver, Brother ControlCenter3, ScanSoft™ PaperPort™ 11SE. ScanSoft™ PaperPort™ 11SE is a document management application for scanning and viewing documents.*

**For DCP-7020, DCP-8060, DCP-8065DN, MFC-7220, MFC-7225N, MFC-8460N, MFC-8660DN and MFC-8860DN users (The illustrations are based on DCP-8060.)**

- 1** Connect the USB interface cable to your PC, and then connect it to the machine.



- 2** Plug the AC power cord into an AC outlet. Turn the power switch on.

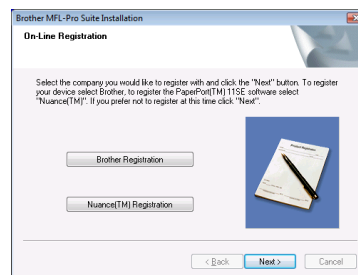


The installation of the Brother drivers will automatically start. **The installation screens appear one after another, please wait for a while.**

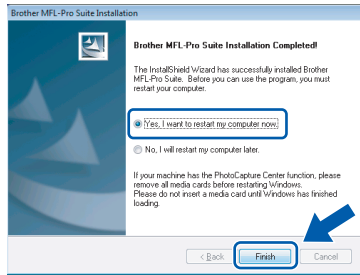
**Improper Setup**

**DO NOT try to cancel any of the screens during this installation.**

- 3** When the **On-Line Registration** screen is displayed, make your selection and follow the on-screen instructions.



- 4 Click **Finish** to restart your computer. After restarting the computer, you must be logged on with Administrator rights.




 **Note**

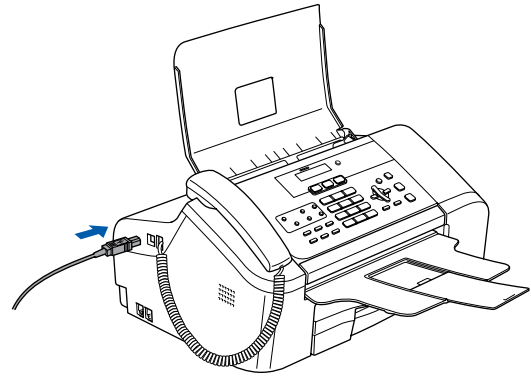
After restarting the computer, the Installation Diagnostics will run automatically. If the installation is unsuccessful, the installation results window will be shown. If the Diagnostics shows a failure, please follow the on-screen instructions or read the on-line help and FAQs in **Start/All Programs/Brother/XXX-XXXX** (where xxx-xxxx is your model name).



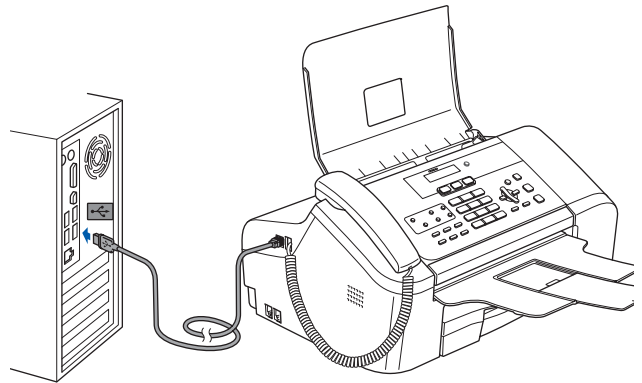
The MFL-Pro Suite has been installed completely.

**For MFC-3360C users**

- 1 Insert the USB cable to the USB port marked with a  symbol. You will find the USB port next to the handset cord socket as shown below.



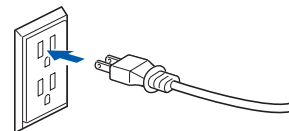
- 2 Connect the USB cable to your computer.



 **Improper Setup**

- **DO NOT** connect the machine to a USB port on a keyboard or a non-powered USB hub. Brother recommends that you connect the machine directly to your computer.
- Make sure that the cable does not restrict the cover from closing, or an error may occur.
- Make sure you use a USB 2.0 cable that is no longer than 6 feet long (2 meters).

- 3 Turn on the machine by connecting the power cord.

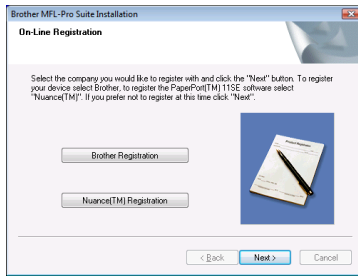


The installation of the Brother drivers will automatically start. **The installation screens appear one after another, please wait for a while.**

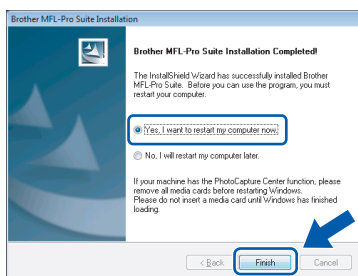
 **Improper Setup**

**DO NOT** try to cancel any of the screens during this installation.

- 4 When the **On-Line Registration** screen is displayed, make your selection and follow the on-screen instructions.



- 5 Click **Finish** to restart your computer. After restarting the computer, you must be logged on with Administrator rights.



### Note

After restarting the computer, the Installation Diagnostics will run automatically. If the installation is unsuccessful, the installation results window will be shown. If the Diagnostics shows a failure, please follow the on-screen instructions or read the on-line help and FAQs in **Start/All Programs/Brother/XXX-XXXX** (where xxx-xxxx is your model name).

**OK!** The MFL-Pro Suite has been installed completely.

### Note

MFL-Pro Suite includes the Printer Driver, Scanner Driver, Brother ControlCenter3, ScanSoft™ PaperPort™ 11SE. ScanSoft™ PaperPort™ 11SE is a document management application for scanning and viewing documents.

## For Network Interface Users

The installation steps for the MFL-Pro Software Suite and drivers will depend on your model number. Please check the table below for the correct installation method for your model.

Model Number	Page Number
MFC-440CN, MFC-5460CN, MFC-5860CN	page 10
DCP-8065DN, MFC-7225N, MFC-7820N, MFC-8460N, MFC-8860DN	page 14

### For MFC-440CN, MFC-5460CN and MFC-5860CN users

#### Important

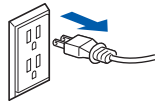
**Make sure that you have finished the instructions from STEP 1 Setting Up the Machine in the Quick Setup Guide.**

#### Note

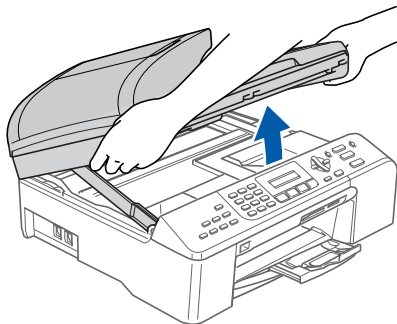
- Please close any applications running before installing MFL-Pro Suite.
- If your machine has media drives (slots), make sure there are no memory cards in the media drive of the machine.

(The illustrations are based on MFC-5460CN.)

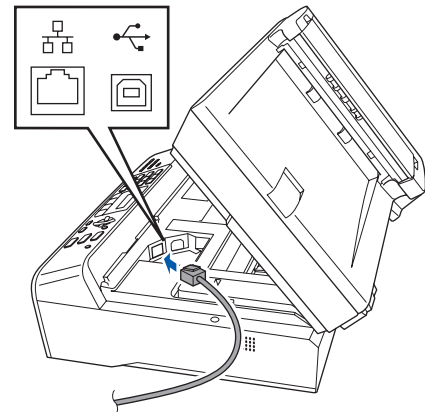
- 1 Turn off and unplug the machine from the AC outlet and from your network, if you already connected an interface cable.



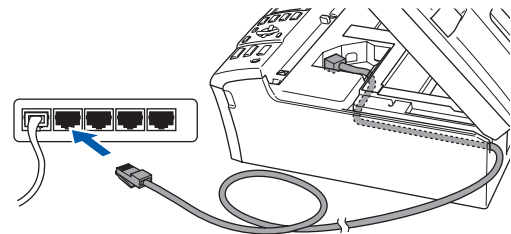
- 2 Using both hands, use the plastic tabs on both sides of the machine to lift the scanner cover until it locks securely into the open position.



- 3 Insert the network cable into the LAN socket marked with a symbol. You will find the LAN socket inside the machine on the left as shown below.



- 4 Carefully route the network cable through the trench and out the back of the machine. Then, connect the cable to your network.



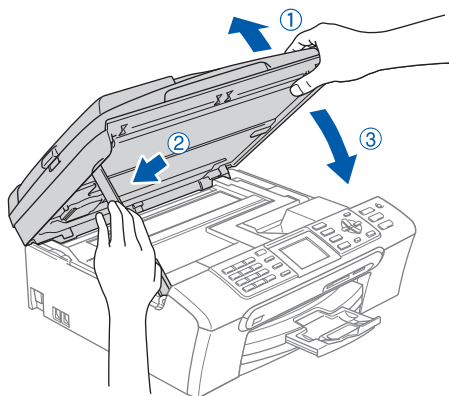
#### ⊘ Improper Setup

**Make sure that the cable does not restrict the cover from closing, or an error may occur.**

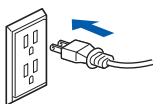
#### Note

*If both USB and LAN cables are being used, guide both cables through the trench with one on top of the other.*

- 5** Lift the scanner cover to release the lock (①). Gently push the scanner cover support down (②) and close the scanner cover (③).



- 6** Turn on the machine by connecting the power cord.



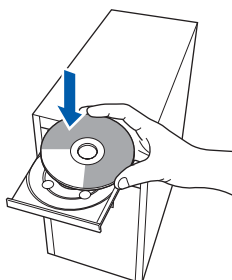
- 7** Turn on your computer. You must be logged on with Administrator rights. Close any applications running before installing the MFL-Pro Suite.



**Note**

Before installation, if you are using personal firewall software, disable it. After the installation, restart your personal firewall software.

- 8** Put the supplied CD-ROM into your CD-ROM drive. If the model name screen appears, choose your machine. If the language screen appears, choose your language.



- 9** The CD-ROM main menu will appear. Click **Install MFL-Pro Suite**.

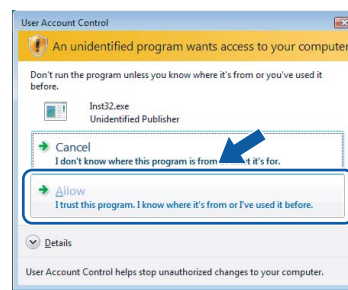


If this window does not appear, use Windows® Explorer to run the **start.exe** program from the root folder of the Brother CD-ROM.

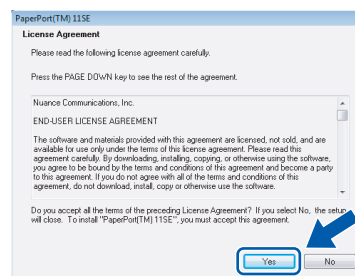


**Note**

When the **User Account Control** screen appears, click **Allow**.

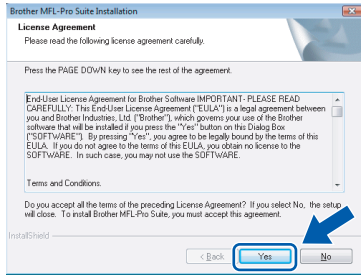


- 10** After reading and accepting the ScanSoft™ PaperPort™ 11SE License Agreement, click **Yes**.

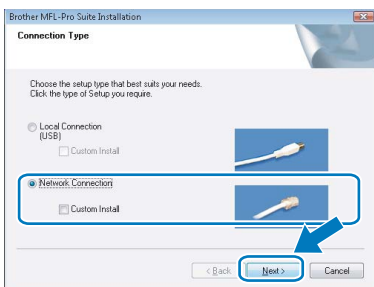


- 11** The installation of ScanSoft™ PaperPort™ 11SE will automatically start and is followed by the installation of MFL-Pro Suite.

- 12** When the Brother MFL-Pro Suite Software License Agreement window appears, click **Yes** if you agree to the Software License Agreement.

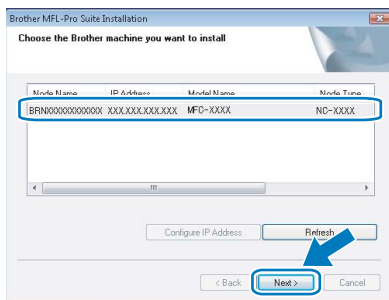


- 13** Choose **Network Connection**, and then click **Next**.



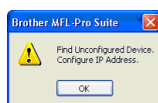
**Note**

- If the machine is configured for your network, choose the machine from the list, and then click **Next**. This window will not appear if there is only one machine connected on the network, it will be chosen automatically.



If your machine shows **APIPA** in the **IP Address** field, click **Configure IP Address** and enter an **IP address** for your machine that is suitable for your network.

- If the machine is not yet configured for use on your network, the following screen appears.



Click **OK**. The **Configure IP Address** window will appear. Enter an **IP address** for your machine that is suitable for your network by following the on-screen instructions.

- 14** The installation of the Brother drivers will automatically start. The installation screens appear one after another. **Please wait, it will take a few seconds for all the screens to appear.**

**Improper Setup**

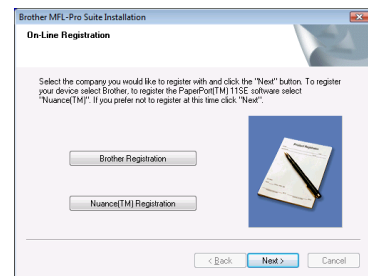
**DO NOT** try to cancel any of the screens during this installation.

**Note**

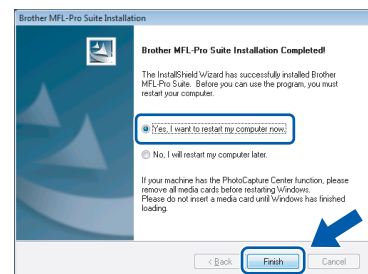
When this screen appears, click the check box and click **Install** to complete the installation properly.



- 15** When the Brother and ScanSoft **On-Line Registration** screen is displayed, make your selection and follow the on-screen instructions.



- 16** Click **Finish** to restart your computer. After restarting the computer, you must be logged on with Administrator rights.



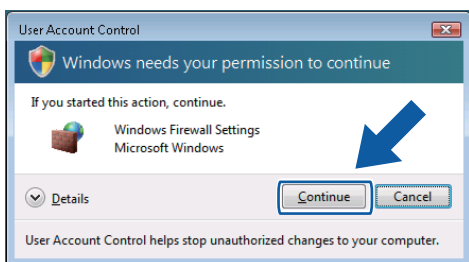
**Note**

After restarting the computer, the **Installation Diagnostics** will run automatically. If the installation is unsuccessful, the installation results window will be shown. If the **Diagnostics** shows a failure, please follow the on-screen instructions or read the on-line help and FAQs in **Start/All Programs/Brother/MFC-XXXX** (where **xxxx** is your model number).

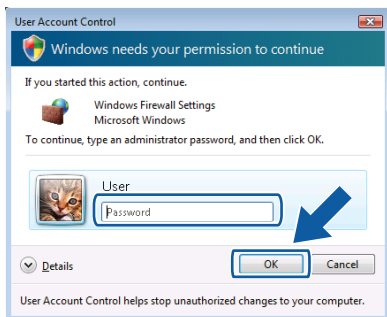
**17** Once you are sure that you can print after the installation, restart your Firewall software. Firewall settings on your PC may reject the necessary network connection for Network Scanning and PC-Fax.

If you are using the Windows® Firewall follow the instructions below. If you are using personal firewall software, see the User's Guide for your software or contact the software manufacturer.

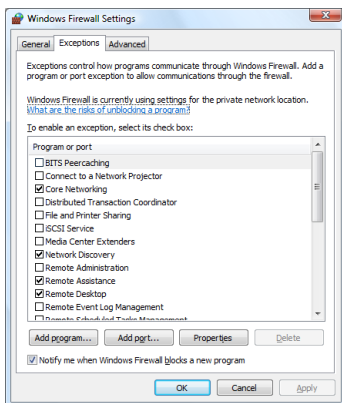
- 1 Click the **Start** button, **Control Panel**, **Network and Internet**, **Windows Firewall** and click **Change settings**.
- 2 When the **User Account Control** screen appears, do the following.
  - Users who have administrator rights: Click **Continue**.



- Users who do not have administrator rights: Enter the administrator password and click **OK**.



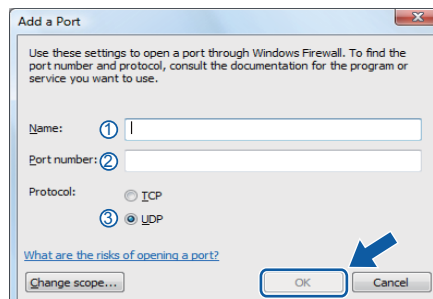
- 3 Make sure that Windows Firewall on the **General** tab is set to **On**.
- 4 Click the **Exceptions** tab.



- 5 Click the **Add port...** button.

6 To add port **54925** for network scanning, enter the information below:

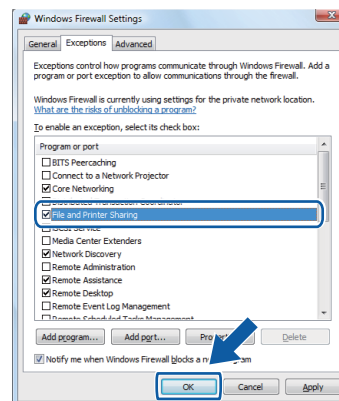
- 1) In **Name**: Enter any description, for example "Brother Scanner".
- 2) In **Port number**: Enter "**54925**".
- 3) Make sure **UDP** is selected. Then click **OK**.



- 7 Click the **Add port...** button.
- 8 To add port **54926** for Network PC-Fax (MFC Models only), enter the information below:

- 1) In **Name**: Enter any description, for example "Brother PC-Fax".
- 2) In **Port number**: Enter "**54926**".
- 3) Make sure **UDP** is selected. Then click **OK**.

- 9 Make sure that the new setting is added and is checked, and then click **OK**.
- 10 If you still have trouble with your network connection such as Network Scanning or Printing, check the **File and Printer Sharing** box in the **Exceptions** tab and then click **OK**.



**The MFL-Pro Suite has been installed completely.**



*MFL-Pro Suite includes the Network Printer Driver, Network Scanner Driver, Brother ControlCenter3, ScanSoft™ PaperPort™ 11SE. ScanSoft™ PaperPort™ 11SE is a document management application for scanning and viewing documents.*

For DCP-8065DN, MFC-7225N, MFC-7820N, MFC-8460N and MFC-8860DN users

### Important

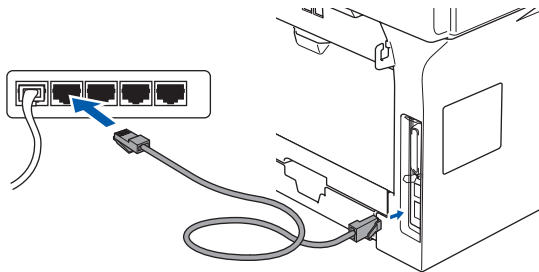
Make sure that you have finished the instructions from STEP 1 Setting Up the Machine in the Quick Setup Guide.

(The illustrations are based on DCP-8065DN.)

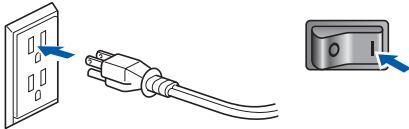
#### Note

Please close any applications running before installing MFL-Pro Suite.

- 1 Turn off and unplug the machine from the AC outlet and disconnect it from your network, if you already connected an interface cable.
- 2 Connect the network interface cable to the machine, and then connect it to your network.



- 3 Plug the AC power cord into an AC outlet. Turn the power switch on.

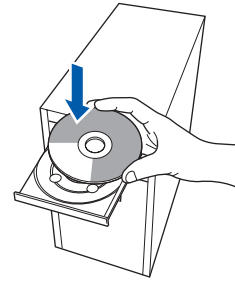


- 4 Turn on your computer. (You must be logged on with Administrator rights.) Close any applications running before installing the MFL-Pro Suite.

#### Note

Before installation, if you are using personal firewall software, disable it. After the installation, restart your personal firewall software.

- 5 Put the supplied CD-ROM into your CD-ROM drive. If the model name screen appears, choose your machine. If the language screen appears, choose your language.



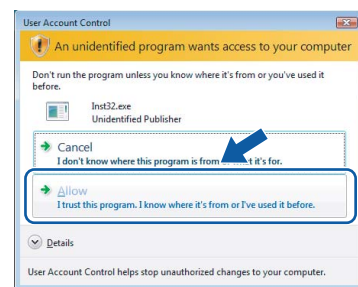
- 6 The CD-ROM main menu will appear. Click **Install MFL-Pro Suite**.



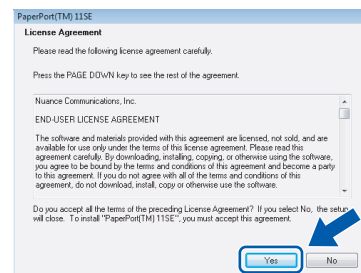
If this window does not appear, use Windows® Explorer to run the **start.exe** program from the root folder of the Brother CD-ROM.

#### Note

When the **User Account Control** screen appears, click **Allow**.

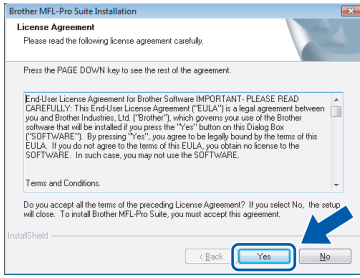


- 7 After reading and accepting the ScanSoft™ PaperPort™ 11SE License Agreement, click **Yes**.

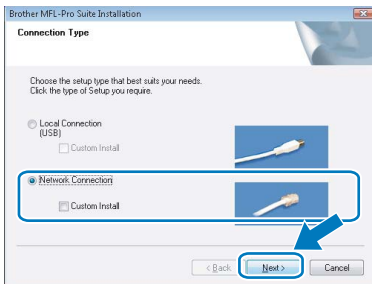




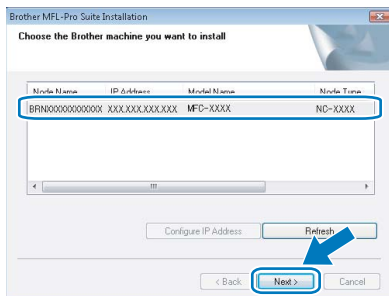
- 8** When the Brother MFL-Pro Suite Software License Agreement window appears, click **Yes** if you agree to the Software License Agreement.



- 9** Choose **Network Connection**, and then click **Next**.



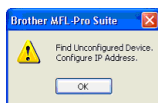
- 10** If the machine is configured for your network, choose the machine from the list, and then click **Next**. This window will not appear if there is only one machine connected on the network, it will be chosen automatically.



If your machine shows **APIPA** in the **IP Address** field, click **Configure IP Address** and enter an IP address for your machine that is suitable for your network.



**Note** If the machine is not yet configured for use on your network, the following screen appears.



Click **OK**. The **Configure IP Address** window will appear. Enter an IP address for your machine that is suitable for your network by following the on-screen instructions.

- 11** The installation of the Brother drivers will automatically start. The installation screens appear one after another. **Please wait, it will take a few seconds for all the screens to appear.**

## Improper Setup

**DO NOT** try to cancel any of the screens during this installation.

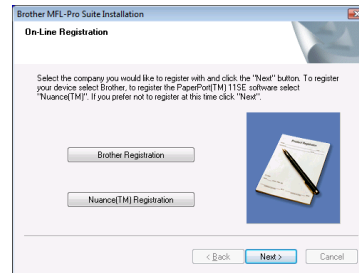


### Note

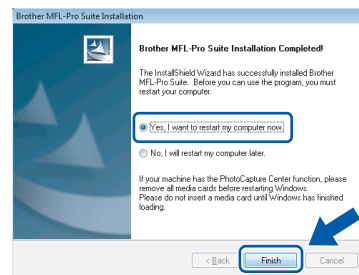
When this screen appears, click the check box and click **Install** to complete the installation properly.



- 12** When the Brother and ScanSoft **On-Line Registration** screen is displayed, make your selection and follow the on-screen instructions.



- 13** Click **Finish** to restart your computer. After restarting the computer, you must be logged on with Administrator rights.



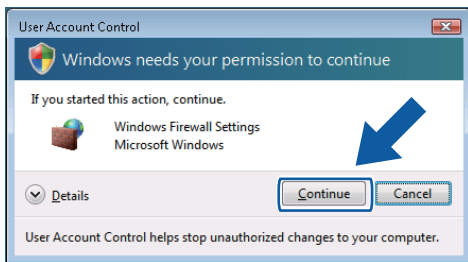
### Note

After restarting the computer, the **Installation Diagnostics** will run automatically. If the installation is unsuccessful, the installation results window will be shown. If the Diagnostics shows a failure, please follow the on-screen instructions or read the on-line help and FAQs in **Start/All Programs/Brother/XXX-XXXX** (where xxx-xxxx is your model name).

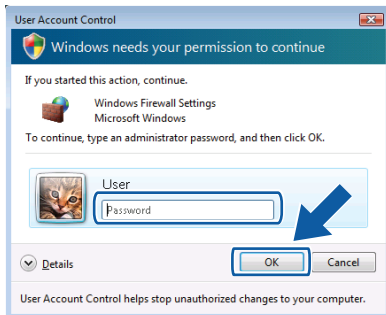
**14** Once you are sure that you can print after the installation, restart your Firewall software. Firewall settings on your PC may reject the necessary network connection for Network Scanning and PC-Fax.

If you are using the Windows® Firewall follow the instructions below. If you are using personal firewall software, see the User's Guide for your software or contact the software manufacturer.

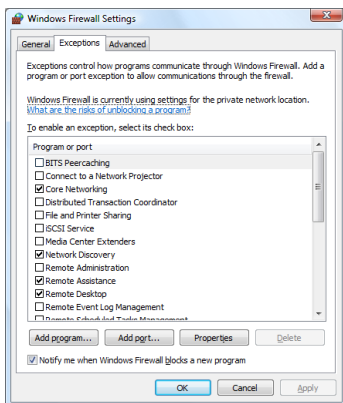
- 1 Click the **Start** button, **Control Panel**, **Network and Internet**, **Windows Firewall** and click **Change settings**.
- 2 When the **User Account Control** screen appears, do the following.
  - Users who have administrator rights: Click **Continue**.



- Users who do not have administrator rights: Enter the administrator password and click **OK**.

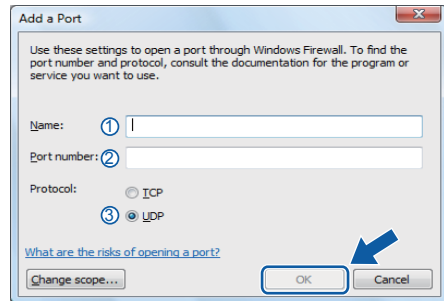


- 3 Make sure that Windows Firewall on the **General** tab is set to **On**.
- 4 Click the **Exceptions** tab.

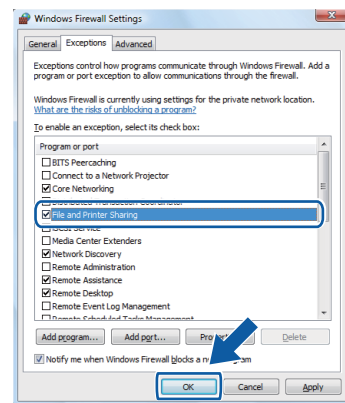


- 5 Click the **Add port...** button.

- 6 To add port **54925** for network scanning, enter the information below:
  - 1) In **Name**: Enter any description, for example "Brother Scanner".
  - 2) In **Port number**: Enter "**54925**".
  - 3) Make sure **UDP** is selected. Then click **OK**.



- 7 Click the **Add port...** button.
- 8 To add port **54926** for Network PC-Fax (MFC Models only), enter the information below:
  - 1) In **Name**: Enter any description, for example "Brother PC-Fax".
  - 2) In **Port number**: Enter "**54926**".
  - 3) Make sure **UDP** is selected. Then click **OK**.
- 9 Make sure that the new setting is added and is checked, and then click **OK**.
- 10 If you still have trouble with your network connection such as Network Scanning or Printing, check the **File and Printer Sharing** box in the **Exceptions** tab and then click **OK**.



**The MFL-Pro Suite has been installed completely.**



**Note**

*MFL-Pro Suite includes the Printer Driver, Scanner Driver, Brother ControlCenter3, ScanSoft™ PaperPort™ 11SE. ScanSoft™ PaperPort™ 11SE is a document management application for scanning and viewing documents.*

## BRAdmin Light utility

The BRAdmin Light is a utility for initial setup of Brother network connected devices. It can also search for Brother products on your network, view the status and configure basic network settings, such as IP address. For more information on BRAdmin Light, visit us at <http://solutions.brother.com>.

### Note

If you require more advanced printer management, use the latest Brother BRAdmin Professional utility version that is available as a download from <http://solutions.brother.com>.

## Installing the BRAdmin Light configuration utility

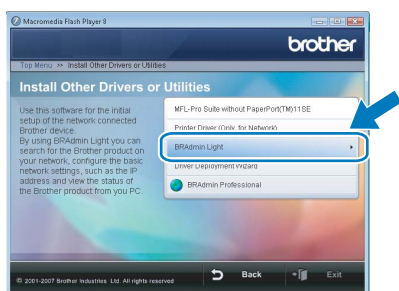
### Note

The default password for the print server is 'access'. You can use BRAdmin Light to change this password.

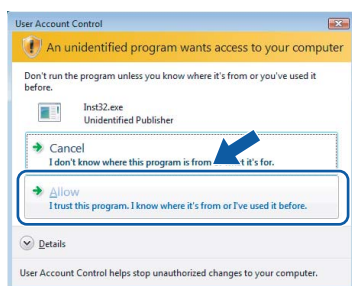
- 1 Click **Install Other Drivers or Utilities** on the menu screen.



- 2 Click **BRAdmin Light** and follow the on-screen instructions.



- 3 When the **User Account Control** screen appears, click **Allow**.

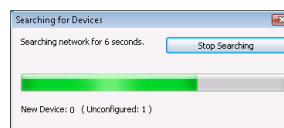


## Setting your IP address, Subnet Mask and Gateway using BRAdmin Light

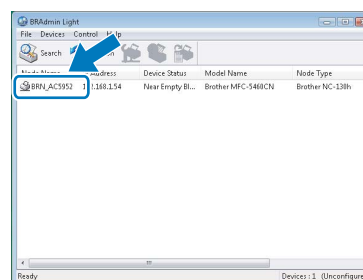
### Note

If you have a DHCP/BOOTP/RARP server in your network, you don't have to do the following operation. Because the print server will automatically obtain its IP address.

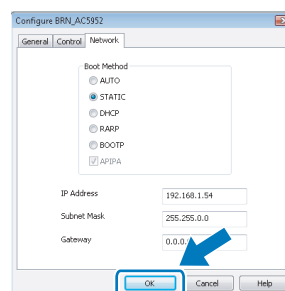
- 1 Start BRAdmin Light. It will search for new devices automatically.



- 2 Double-click the unconfigured device.



- 3 Choose **STATIC** for the **Boot Method**. Enter the **IP Address**, **Subnet Mask** and **Gateway**, and then click **OK**.

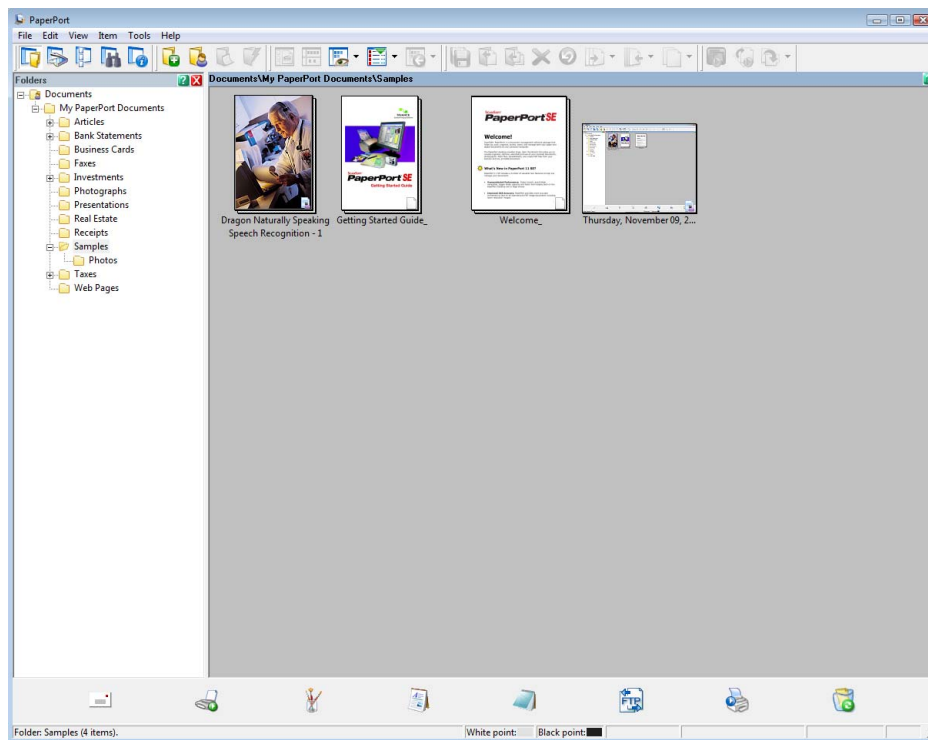


- 4 The address information will be saved to the machine.

## ScanSoft™ PaperPort™ 11SE with OCR by NUANCE™

ScanSoft™ PaperPort™ 11SE for Brother is a document management application. You can use PaperPort™ 11SE to view scanned documents.

PaperPort™ 11SE has a sophisticated, yet easy-to-use filing system that will help you organize your graphics and text documents. It allows you to mix or 'stack' documents of different formats for printing, faxing or filing.



To view the complete **ScanSoft™ PaperPort™ 11SE** User's Guide, choose **Help** from **PaperPort™ 11SE** menu bar and click **Getting Started Guide**.

When you install MFL-Pro Suite, ScanSoft™ PaperPort™ 11SE for Brother is installed automatically.

You can access ScanSoft™ PaperPort™ 11SE through the **ScanSoft™ PaperPort™ 11SE** program group located in **Start/All Programs/ScanSoft PaperPort 11SE** on your PC.

## Computer requirements

Minimum System Requirements and Supported PC Software Functions						
Operating Systems		Supported Functions	Interface	Minimum Processor	Recommended RAM	Required Hard Disk Space
Windows®	Windows Vista™	Printing, Scanning, PC-FAX <sup>1</sup> , Removable Disk <sup>2</sup>	USB, USB 10/100, BASE-TX <sup>3</sup> (Ethernet)	1 GHz 32-bit (x86) or 64-bit (x64) processor	1.0 GB	1.0 GB
<sup>1</sup> PC FAX supports black and white faxing only. <sup>2</sup> Removable disk is a function of PhotoCapture Center®. <sup>3</sup> DCP-8065DN, MFC-440CN, MFC-5460CN, MFC-5860CN, MFC-7225N, MFC-7820N, MFC-8460N, MFC-8660DN, MFC-8860DN only.			For the latest driver updates, visit at <a href="http://www.brother.com">www.brother.com</a> . All trademarks, brand and product names are property of their respective companies.			

### **Trademarks**

The Brother logo is a registered trademark of Brother Industries, Ltd.

Microsoft, MS-DOS and Windows are registered trademarks of Microsoft Corporation in the U.S. and other countries.

Windows Vista is either a registered trademark or trademark of Microsoft Corporation in the United States and/or other countries.

All other terms and brand and product names mentioned in this Windows Vista™ Installation Guide are registered trademarks of their respective companies.

Nuance, the Nuance logo, PaperPort and ScanSoft are trademarks or registered trademarks of Nuance Communications, Inc. or its affiliates in the United States and/or other countries.

### **Compilation and Publication**

This manual has been compiled and published, under the supervision of Brother Industries Ltd., covering the latest product descriptions and specifications.

The contents of this manual and the specifications of this product are subject to change without notice.

Brother reserves the right to make changes without notice in the specifications and materials contained herein and shall not be responsible for any damages (including consequential) caused by reliance on the materials presented, including but not limited to typographical and other errors relating to the publication.

This product is designed for use in a professional environment.

### **Copyright and License**

© 2007 Brother Industries, Ltd. © 1998-2007 TROY Group, Inc. © 1983-2007 PACIFIC SOFTWARES INC. This product includes the "KASAGO TCP/IP" software developed by Elmec Systems, Inc. © 2007 Devicescape Software, Inc. ALL RIGHTS RESERVED.

**brother**®

USA/CAN

## Free Manuals Download Website

<http://myh66.com>

<http://usermanuals.us>

<http://www.somanuals.com>

<http://www.4manuals.cc>

<http://www.manual-lib.com>

<http://www.404manual.com>

<http://www.luxmanual.com>

<http://aubethermostatmanual.com>

Golf course search by state

<http://golfingnear.com>

Email search by domain

<http://emailbydomain.com>

Auto manuals search

<http://auto.somanuals.com>

TV manuals search

<http://tv.somanuals.com>