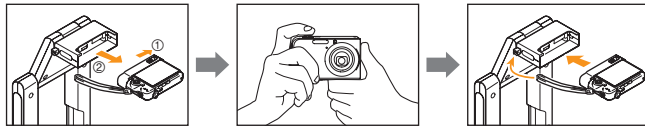


Using the Multi PJ Startup Mode (2)

Camera Image Mode: To project images recorded with the PJ Camera

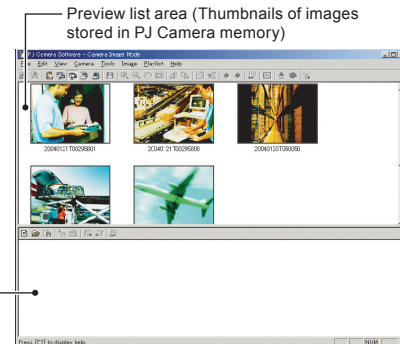
Camera Image

- 1** After recording the images with the PJ Camera, attach the camera to the stand.



- 2** Click [Camera Image] . This will display thumbnails of the image files in PJ Camera memory

- 3** Double-click the thumbnail of the image you want to project.



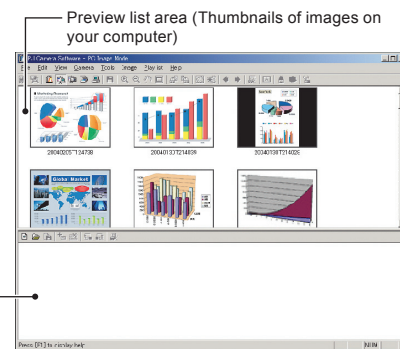
Playlist area
(Projection sequence of images)

Refer to Chapter 2 of the PJ Camera Software User's Guide.

Other Functions

PC Image Mode

You can select images from thumbnails of images on your computer and project the images. You also can use the "Playlist" to arrange the sequence of the images for a presentation.



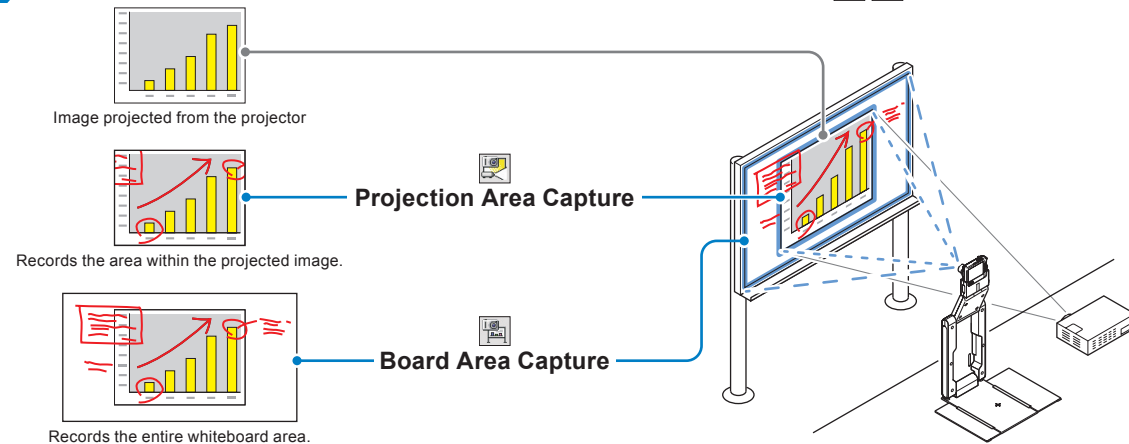
Playlist area
(Projection sequence of images)

Refer to Chapter 2 of the PJ Camera Software User's Guide.

Board Area Capture/Projection Area Capture

After you project an image onto a whiteboard and add handwritten notes with a marker, you can record the image along with the handwritten notes to a new image. Whether you should use "Board Area Capture" or "Projection Area Capture" depends on the area of data you want to include in the image.

- 1** Depending on the area of data you want to include in the image, click or .



Refer to Chapter 2 of the PJ Camera Software User's Guide.

MULTI PJ CAMERA

YC-430 Quick Guide

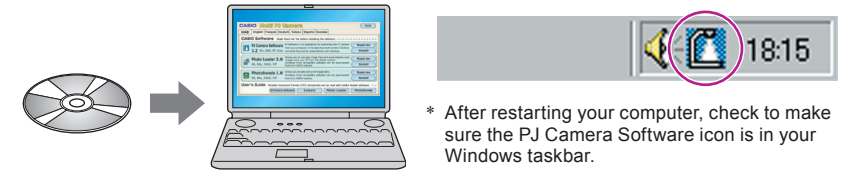
This guide provides simplified information about how to use the functions of the CASIO YC-430 MULTI PJ CAMERA. For details, see the user's guide that comes with the YC-430.

<http://world.casio.com/>



1 Installing the Bundled Software

Install the bundled software on your computer.

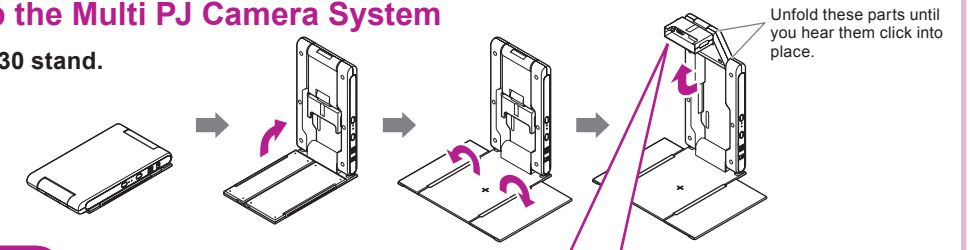


Refer to "Using the CASIO CD-ROM" in the YC-430 User's Guide for details.

* After restarting your computer, check to make sure the PJ Camera Software icon is in your Windows taskbar.

2 Setting Up the Multi PJ Camera System

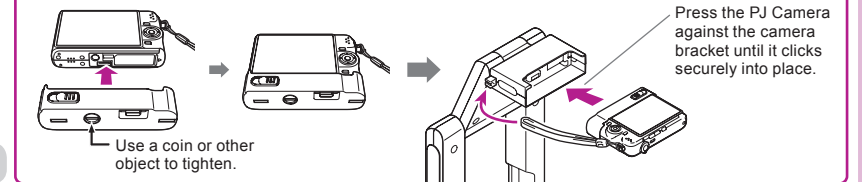
1. Prepare the YC-430 stand.



You also can remove the PJ Camera from the stand and use it as a digital camera.

Install batteries in the PJ Camera and then attach it to the bracket.

2. Attach the PJ Camera to the camera stand.



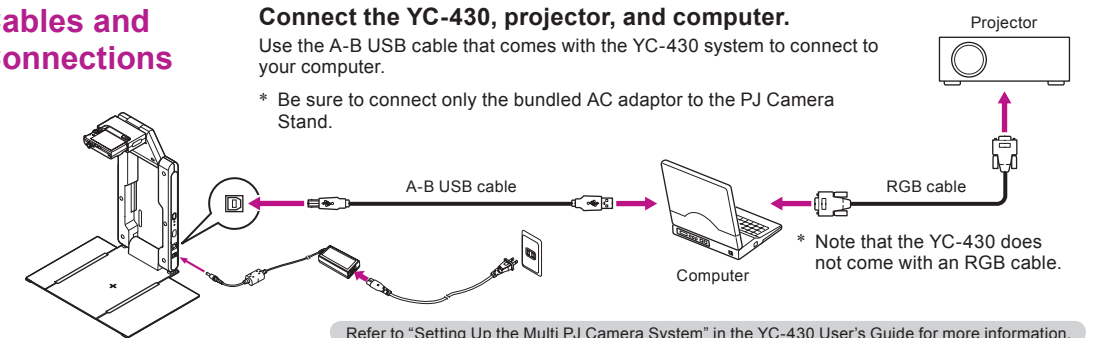
Refer to "Setting Up the Multi PJ Camera System" in the YC-430 User's Guide for more information.

3 Cables and Connections

Connect the YC-430, projector, and computer.

Use the A-B USB cable that comes with the YC-430 system to connect to your computer.

* Be sure to connect only the bundled AC adaptor to the PJ Camera Stand.



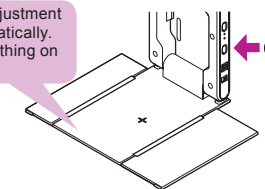
Refer to "Setting Up the Multi PJ Camera System" in the YC-430 User's Guide for more information.

4 Starting Up the Software

Turn on stand power will start up the PJ Camera Software and display a dialog box.

* All system operations are performed using the PJ Camera Software.

Position and focus adjustment are performed automatically. Make sure there is nothing on the document stage.



Dialog Box

- Business Document Mode
- Multi PJ Mode

Select the startup mode you want to use.

Business Document startup mode:

Select this mode to configure the camera as a document camera, which will simplify shooting of documents and three-dimensional objects.

Multi PJ startup mode:

Select this mode to enable the full range of camera functions, including document camera, scanner, board area capture, and other functions.

Refer to "PJ Camera Software Overview and Basic Operations" in the YC-430 User's Guide.

YC-430 Modes

PJ Camera Software has two startup modes: a Business Document startup mode **BD** and a Multi PJ startup mode **MP**. The startup mode you are using determines the functions available to you when you start up PJ Camera Software.

Document Camera Mode

BD **MP**

Document camera functions are for projecting images of documents and three-dimensional objects. Select the Business Document startup mode when you want to limit PJ Camera Software operation to these functions. When you need more precise control over document camera functions or when you need to use other functions, select the Multi PJ startup mode.

Scanner Mode

MP

The Scanner Mode provides high-speed scanning operations for everything from thick objects to documents. This mode is great when you need to digitize a large number of document pages.

Camera Image Mode

MP

The Camera Image Mode lets you project images recorded with the PJ Camera and stored in the PJ Camera memory.

PC Image Mode

MP

The PC Image Mode lets you project images that are stored on your computer.

Board Area Capture/Projection Area Capture

MP

After you project an image onto a whiteboard and add handwritten notes with a marker, you can record the image along with the handwritten notes to a new image. These functions come in handy when you need to record the progress or the results of a meeting.



Changing the Startup Mode

You can select either Business Document or Multi PJ as the PJ Camera Software startup mode on the screen that appears when you start up the software. You also can use the following procedure to change the startup mode while PJ Camera Software already running.

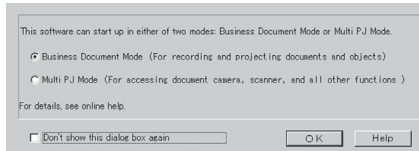
Changing the startup mode

- 1 Move the mouse pointer to the top edge of your computer screen so the operation bar appears.

You can find out the currently selected startup mode by checking the operation bar.

If you see this:	It means this startup mode is selected:
	Business Document startup mode
	Multi PJ startup mode

- 2 On the operation bar, click **[Tools]** and then **[Operating Environment]**.



- 3 On the operating environment dialog box that appears, click the **[Display Startup Dialog Box]** button.

This will cause the Startup Mode dialog box to appear.

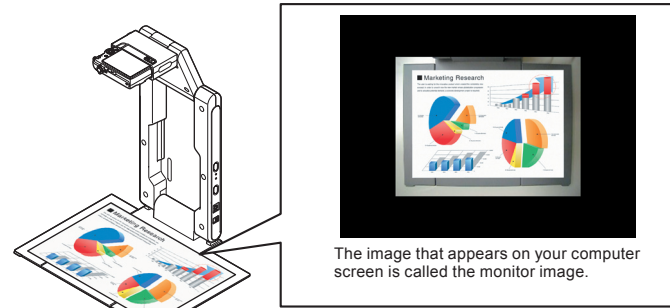
- 4 Select **"Business Document Mode"** or **"Multi PJ Mode"** and then click **[OK]**.

This will switch to the startup mode you selected.

Using the Business Document Startup Mode

Document Camera Mode: To project the image of a document or 3-dimensional object **Document Camera**

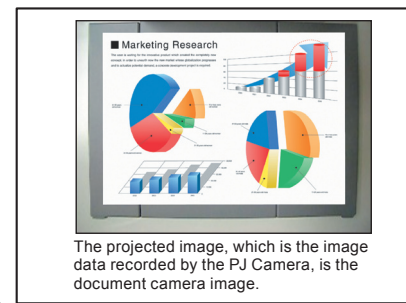
- 1 Place the document onto the document stage.



- 2 Click **[Shutter]**. This will project an image of the document.

- ★ Make sure that the subject you are shooting is illuminated sufficiently.
- ★ Take care so illumination of the subject is not blocked by the YC-430 stand.
- ★ When placing the document or object onto the document stage, make sure it is positioned so it covers the cross (+) mark on the stage.

- 3 To project the image of another document, replace the document on the document stage and then click **[Shutter]**.



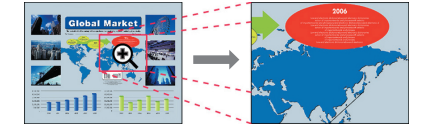
Refer to Chapter 2 of the PJ Camera Software User's Guide.

- To re-project an image

Use your keyboard's left and right arrow keys to scroll through recorded images to project them.

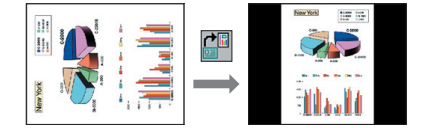
- To enlarge small-size text

Click **[Zoom In]** button. To reduce the size of the text, click **[Zoom Out]**. You also can scroll images using **[Scroll]**.



- To rotate an image

Click **[Rotate Left]** and **[Rotate Right]**.

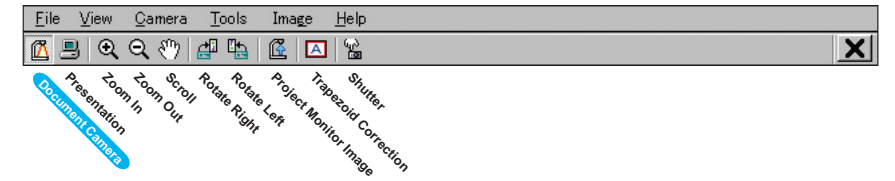


- To save the projected image

On the operation bar, select **[File]** and then **[Save]**, and then specify the file save destination and the file name.

Business Document Startup Mode Operation Bar

The operation bar appears whenever you move the mouse pointer to the top edge of your computer screen.



Using the Multi PJ Startup Mode (1)

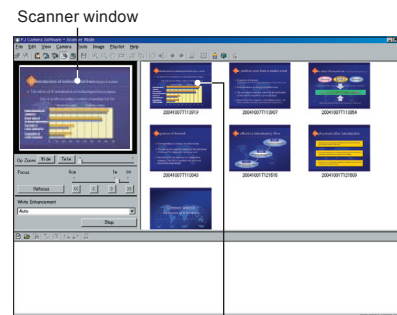
Scanner Mode: To save images as image data on your computer **Scanner**

- 1 Click **[Scanner]** to enter the Scanner Mode.

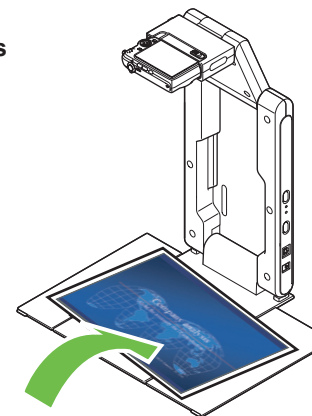
- 2 Place the document whose image you want to save onto the document camera's document stage.

- 3 On the scanner window, click **[Start]** to start recording images.

An image is recorded automatically whenever you replace the document on the document stage.



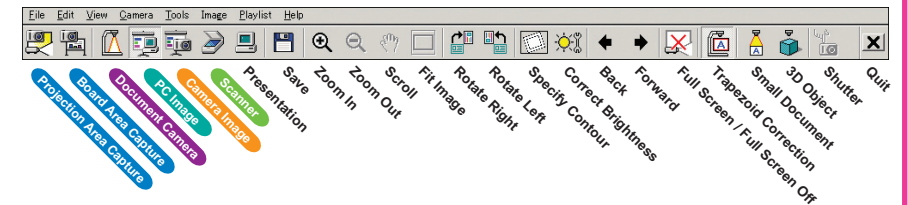
Thumbnail of the recorded image
A new thumbnail is added at the top of the preview list area whenever a document is scanned.



- 4 To stop automatic scanning, click **[Stop]**.

Refer to Chapter 2 of the PJ Camera Software User's Guide.

Multi PJ Startup Mode Operation Bar



Document Camera Mode: To project the image of a document or 3-dimensional object **Document Camera**

Selecting the document camera function while Multi PJ is specified as the startup mode, the PJ Camera Software will switch the document camera image automatically whenever you change the document page on the document stand (under initial settings). You also can use the operation bar to change the following settings.

	Tool Button	(Small Document)	(3D Object)
Subject			
Document (A4 size and larger)		OFF (Default)	OFF (Default)
Business card and smaller document		ON	OFF (Default)
3D objects, etc.		OFF (Default)	ON
Small 3D objects		ON	ON

Refer to Chapter 2 of the PJ Camera Software User's Guide.

Free Manuals Download Website

<http://myh66.com>

<http://usermanuals.us>

<http://www.somanuals.com>

<http://www.4manuals.cc>

<http://www.manual-lib.com>

<http://www.404manual.com>

<http://www.luxmanual.com>

<http://aubethermostatmanual.com>

Golf course search by state

<http://golfingnear.com>

Email search by domain

<http://emailbydomain.com>

Auto manuals search

<http://auto.somanuals.com>

TV manuals search

<http://tv.somanuals.com>