

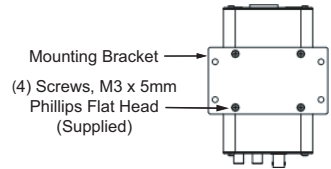
# CEN-NVS100

## Network Video Streamer

### 1 Installing the CEN-NVS100

#### MOUNTING

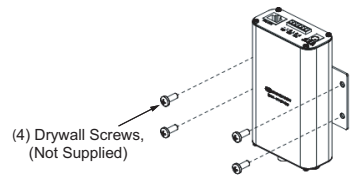
##### A. Attach the Supplied Mounting Bracket.



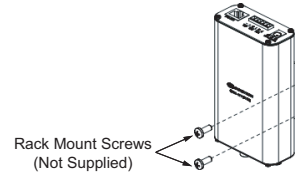
##### B. Mount the CEN-NVS100 to a Wall or to a Rack.

**NOTE:** The CEN-NVS100 must be installed in a temperature-controlled environment ranging from 32° to 104° F (0° to 40° C).

##### Wall Mounting:



##### Rack Mounting:



Mount the left or right side of the bracket to the front or rear rail of a rack (mounting of right side of bracket is shown).

#### CONNECTIONS

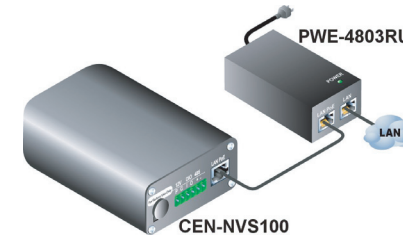
##### (Front) Video Connection

If necessary, use the supplied BNC-to-RCA adapter to connect to the camera.

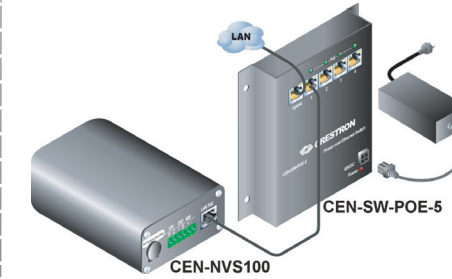


##### (Rear) Power over Ethernet (PoE) Connection

Connection to Crestron® PoE Injector (Part No. PWE-4803RU)



Connection to Crestron PoE Switch (Part No. CEN-SW-POE-5 Shown)



Connection to Third-Party PoE Power Source. For installation information, refer to the third-party device documentation.

**NOTE:** By default, the CEN-NVS100 uses DHCP.

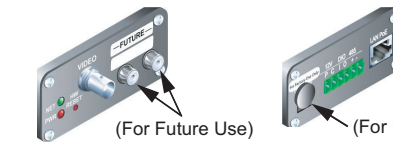
##### (Rear, Optional) 6-pin Terminal Block Connection

Using the supplied terminal block mating connector, connect the 6-pin terminal block to external devices such as an alarm, sensor, and PTZ camera.



P = (For factory use only)  
C = Common  
I = Digital Input  
O = Digital Output  
+ = RS-485, T+/R+  
- = RS-485, T-/R-

##### For Future or Factory Use Only

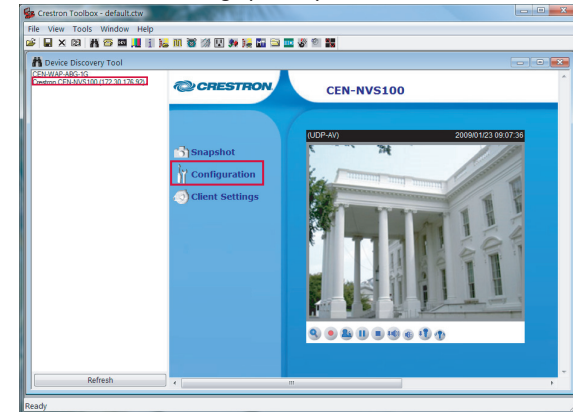


### 2 Configuring the CEN-NVS100

##### A. Access the Configuration Web Pages.

- In the Device Discovery Tool of Crestron Toolbox™, select **Crestron CEN-NVS100**. The home page of the CEN-NVS100 opens.

##### CEN-NVS100 Home Page (Default)

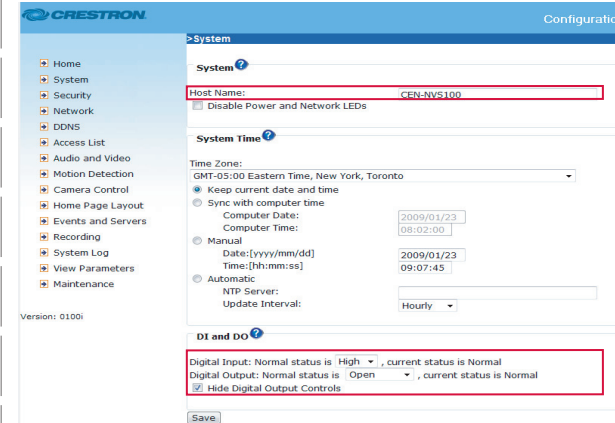


- Select **Configuration**. The "System" configuration page opens (refer to Step B).

##### B. (Optional) Configure System Settings.

- On the "System" configuration page, modify the default host name, **CEN-NVS100**, using a name that is meaningful for your environment.
- Configure DI (Digital Input) and DO (Digital Output) settings.
- Click **Save**.

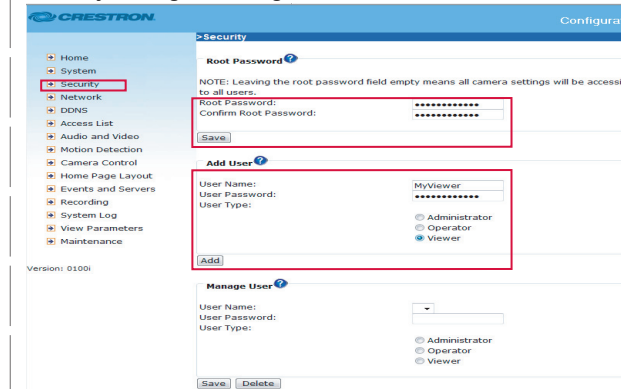
##### "System" Configuration Page



##### C. Configure Security Settings.

- Click **Security**. The "Security" configuration page opens.
- In the **Root Password** pane, assign an administrator password and then click **Save** at the bottom of the pane. A log-in window appears.
- Enter **root** as the user name, and then enter the password you entered in step 2.
- In the **Add User** pane, create a user account whose user type is set to **Viewer**, and then click **Add**.

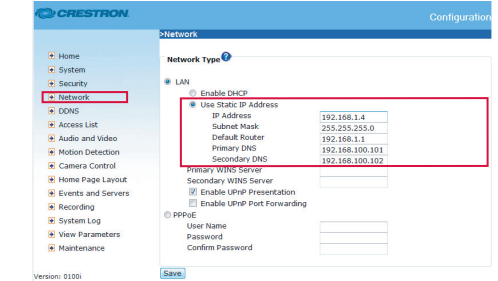
##### "Security" Configuration Page



##### D. Configure Network Settings.

- Click **Network**. The "Network" configuration page opens.
- Configure a static IP address and related network information.
- Click **Save**.

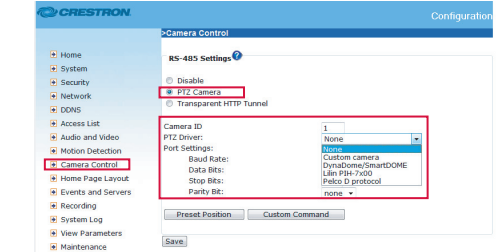
##### "Network" Configuration Page



##### E. (Optional) Configure Camera Control Settings.

- Click **Camera Control**. The "Camera Control" configuration page opens.
- Click **PTZ Camera**, and then configure the camera settings as required.
- Click **Save**.

##### "Camera Control" Configuration Page



### 3 Adding the CEN-NVS100 to Your Crestron System

To add the CEN-NVS100 to your Crestron system, perform the steps in **Option 1** or **Option 2**:

- **Option 1** uses VisionTools® Pro-e (VT Pro-e) programming and provides streaming video capabilities only.
- **Option 2** uses both SIMPL Windows and VT Pro-e programming and provides the following capabilities: streaming video, touchpanel control of PTZ cameras, control system response for digital I/O, motion detection, and video detection.

#### Option 1: VT Pro-e Programming Only

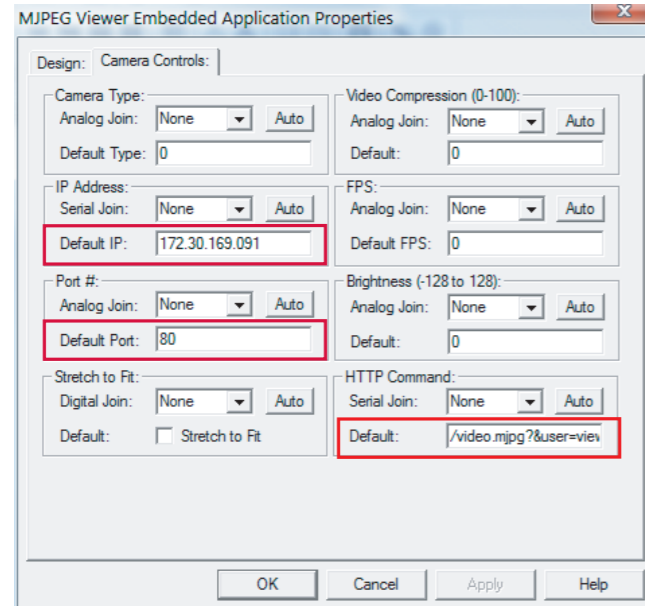
- A. For the desired touchpanel in the *ProjectView* tab, open the *Embedded Applications* folder and then double-click **MJPEG Viewer** to open the "MJPEG Viewer Embedded Application Properties" window.
- B. Click the *Camera Controls* tab.
- C. Enter the IP address, port number, and HTTP command into the appropriate fields, and then click **OK**.

**NOTE:** For the HTTP command, enter the viewer name and viewer password assigned when creating a **Viewer** user account in section 2, step C4 of this guide. For example, if the viewer name is *MyViewer* and the password is *viewmycamera*, enter the following:

```
/video.mjpg?user=MyViewer&pw=viewmycamera
```

- D. Save the project.

#### "MJPEG Viewer Embedded Application Properties" Window

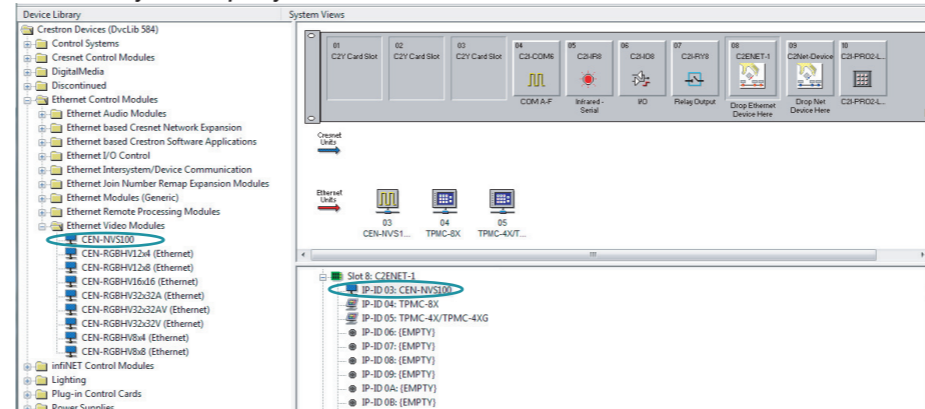


#### Option 2: SIMPL Windows and VT Pro-e Programming

##### SIMPL Windows Programming:

- A. From the *Ethernet Control Modules* | *Ethernet Video Modules* folder of the *Device Library*, drag the CEN-NVS100 into the *System Views*.

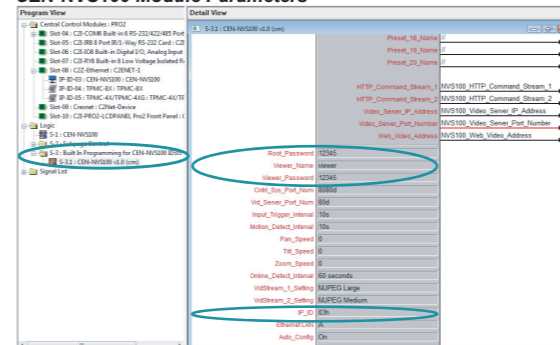
##### Device Library and Sample System Views



- B. Double-click the CEN-NVS100 in the system tree to open the "Device Settings" window, and then set the IP address of the CEN-NVS100 (use the IP address set in section 2, step D2). If desired, also change the IP ID of the CEN-NVS100.

- C. In the *Logic* folder of the *Program View*, select the *Built In Programming for CEN-NVS100* subfolder.

##### CEN-NVS100 Module Parameters

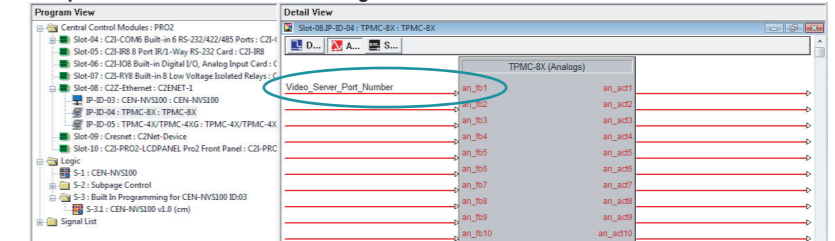


- D. In the *Detail View*, enter data into the following text boxes:

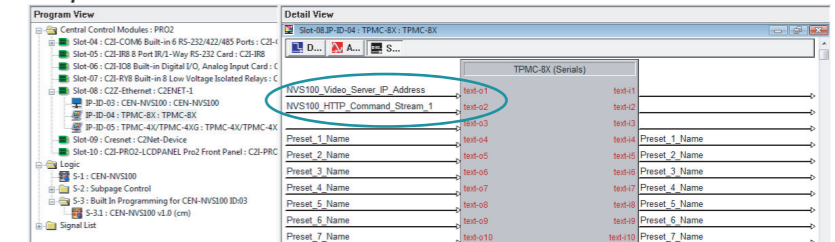
- *Root\_Password* (use the root password entered in section 2, step C2)
- *Viewer\_Name* (use the name entered in section 2, step C4)
- *Viewer\_Password* (use the password entered in section 2, step C4)
- *IP\_ID* (use the IP ID assigned to the CEN-NVS100)

- E. Connect the CEN-NVS100 module outputs (*Video\_Server\_Port\_Number*, *HTTP\_Command\_Stream\_1*, *Video\_Server\_IP\_Address*, and all others required for your application) to the touchpanel definition.

##### Sample TPMC-8X Port Number Analog Join



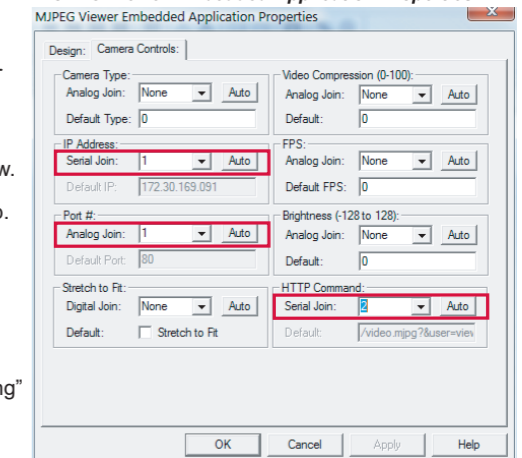
##### Sample TPMC-8X IP Address and HTTP Command Serial Joins



#### VT Pro-e Programming:

- A. For the desired touchpanel in the *ProjectView* tab, open the *Embedded Applications* folder and then double-click **MJPEG Viewer** to open the "MJPEG Viewer Embedded Application Properties" window.
- B. Click the *Camera Controls* tab.
- C. In the *IP Address*, *Port #*, and *HTTP Command* panes, set the join numbers using the same numbers assigned in step E (above) of the "SIMPL Windows Programming" section, and then click **OK**.
- D. Save the project.

#### "MJPEG Viewer Embedded Application Properties" Window



## Free Manuals Download Website

<http://myh66.com>

<http://usermanuals.us>

<http://www.somanuals.com>

<http://www.4manuals.cc>

<http://www.manual-lib.com>

<http://www.404manual.com>

<http://www.luxmanual.com>

<http://aubethermostatmanual.com>

Golf course search by state

<http://golfingnear.com>

Email search by domain

<http://emailbydomain.com>

Auto manuals search

<http://auto.somanuals.com>

TV manuals search

<http://tv.somanuals.com>