

**DA** **Dakota Alert, Inc.**

**DCHT-2500**  
**Wireless**  
**Rubber Hose**  
**Transmitter**

**Owner's Manual**



## **Warnings**

This device complies with Part 15 of the FCC rules, Operation of this device is subject to the following conditions: 1. This device may not cause harmful interference. 2. This device must accept any interference, including interference that may cause undesired operation.

## **Installation:**

The DCHT-2500 transmitter consists of a transmitter box and 25 feet of hose. To install, connect the hose to the stem on the transmitter box, then lay the hose across the driveway. Mount the transmitter box on a tree or wooden post at least three feet off the ground (see figure 1). Avoid using steel posts as this may interfere with the radio signal. The maximum range of the system is about 2500 feet, however, obstructions such as hills, trees and metal siding can reduce the range.

Connect a 9-volt alkaline battery to the transmitter. The battery should last about 6 to 12 months under normal conditions. Once the battery is connected, the system will need a few seconds to warm up. After this time the transmitter will detect vehicles driving over the hose. Make sure that there are no kinks in the hose, as this may keep the transmitter from detecting.

When the transmitter detects a car, it will send a signal to the receiver, which will sound one of four different tones (Classical, Westminster Chime, Ding Dong, or Whistle) for a few seconds.

**Operation:** (Always test unit prior to installation)

The control box is powered by one 9-volt battery.

**Coding the transmitter:**

**Note: The transmitters and receivers are preset at the factory. DO NOT change settings, unless changing the tune or experiencing false signals.**

1. Open the transmitter box. The first thing you will see is the air switch (Figure 2). Directly below the air switch is the transmitter's radio (Figure 3).

2. Locate the dip switches on the radio (2)(3).

3. Switches 1-8 are for the frequency setting (256 combinations). If needed, set switches 1-8 (2) to match the eight switches in the receiver.

4. Switches 9 and 10 (3) are for the channel setting on the transmitter. Use these to set the tone you prefer. The four channels are listed in the table on page 5.

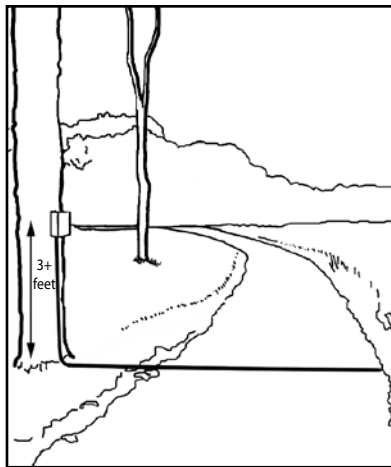


figure 1

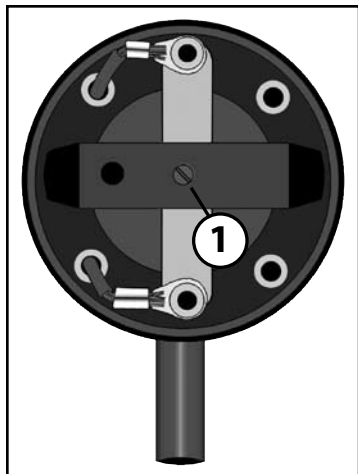


figure 2

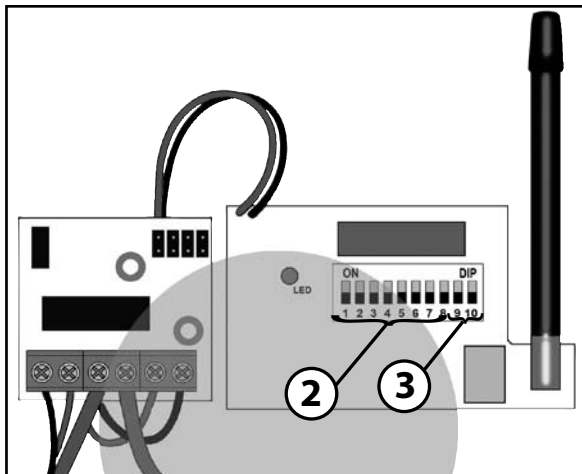


figure 3

## Table to select tones:

Switch 9	Switch 10	Channel	Tune
On	On	1	Classical
Off	On	2	Westminster
On	Off	3	Ding Dong
Off	Off	4	Whistle

### Coding the receiver:

1. Open the receiver case by inserting a small screwdriver into one of the pry notches on the side of the case. (refer to receiver manual)

2. Gently lift off the front cover.

3. Locate the eight dip switches on the receiver and make sure they are set identically to dip switches 1-8 on the transmitter.

**Note: If more than one transmitter is used with the receiver, the first eight dip switches of all transmitters must match the eight dip switches of the receiver.**

**Note: Whenever a change is made to any jumper or the dip switches, the receiver must be turned OFF and then back ON to operate properly.**

Frequency: 433.92 MHz

Operating range: -30°F to 120°F

Battery life: 6-12 months

**LOW BATTERY ALERT:** If the receiver sounds a second alert 30 seconds after the first alert, provided nothing trips the transmitter again, the 9-volt battery in the transmitter should be changed.

## Troubleshooting the DCHT-2500

If the transmitter is not detecting, try one of these:

- Change the battery in the transmitter.
- Make sure the transmitter and receiver are coded alike.
- Move the transmitter closer to the receiver.
- Keep the transmitter away from large metal objects that may interfere with the radio signal.
- Adjust the screw on the air switch in the transmitter (Figure 2) (1) by turning it clockwise. This will increase the sensitivity.
- If the contacts are touching, the system will not work.

If the transmitter is giving false signals, try one of these:

- Adjust the screw on the air switch in the transmitter (Figure 2) (1) by turning it counter-clockwise. This will decrease sensitivity.
- Set the transmitter and receiver to a different code setting. Refer to instructions on pages 3 and 5.

## **TECHNICAL SUPPORT**

If you encounter any difficulty in the operation of this product after reading the manual, please contact us. You can reach us by phone at 605-356-2772 from 8:30 AM to 5:00 PM Monday through Friday (Central Standard Time). We will be happy to answer your questions and help you in any way we can.

Dakota Alert warrants this product to be free of defects in material and workmanship for a period of one year from the date of purchase. This warranty does not cover damage resulting from accident, abuse, act of God or improper operation.

## **Warranty**

If this product does become defective, simply return it to Dakota Alert. Please include a note describing the troubles along with your name and return address as well as the original sales receipt. If the product is covered under warranty it will be repaired or replaced at no charge. If it is not covered by warranty, you will be notified of any charges before work is done.

# **Dakota Alert, Inc.**

32556 E. Main St.

P0 Box 130

Elk Point, SD 57025

Phone: (605) 356-2772

Fax: (605) 356-3662

Web: [www.dakotaalert.com](http://www.dakotaalert.com)



## Free Manuals Download Website

<http://myh66.com>

<http://usermanuals.us>

<http://www.somanuals.com>

<http://www.4manuals.cc>

<http://www.manual-lib.com>

<http://www.404manual.com>

<http://www.luxmanual.com>

<http://aubethermostatmanual.com>

Golf course search by state

<http://golfingnear.com>

Email search by domain

<http://emailbydomain.com>

Auto manuals search

<http://auto.somanuals.com>

TV manuals search

<http://tv.somanuals.com>