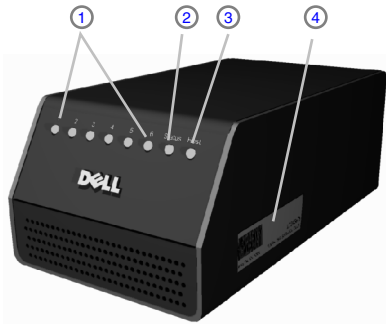




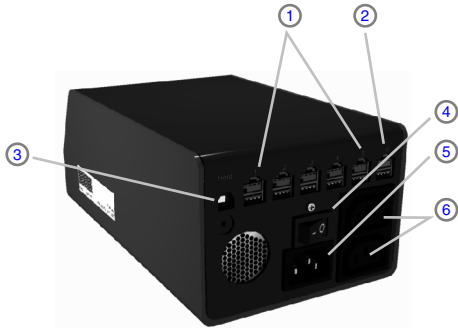
Setting Up Your Powered USB Hub

CAUTION:
Before you set up and operate your Dell™ hub, see the safety instructions in the *Product Information Guide*

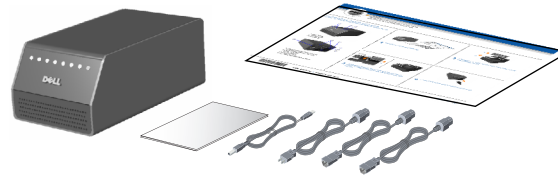
This placemat is only intended for quick reference.
Consult your *Product Information Guide* for complete details



- 1. Port LEDs (6)
- 2. Status LED
- 3. Host LED
- 4. Service Tag Label



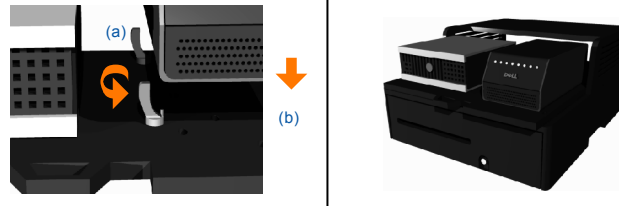
- 1. USB Peripheral Ports (+12 V) (5)
- 2. USB Peripheral Port (+24 V)
- 3. USB Host Port
- 4. Power Switch
- 5. AC Power Port
- 6. AC Pass-Through Power Ports (2)



1 Unpack your Powered USB Hub



2 If Integrator¹ is used, remove cover from Integrator (a) and slide tray out (b)



3 If Integrator is used, install retainers (a) and hub (b)
NOTE: If Integrator is not used, place hub in secured position



4 Connect AC power cord to hub and power outlet



0TF663A00





5 Connect one AC pass-through power cord to hub and Host PC. Connect other AC pass-through power cord to hub and monitor.
NOTE: Do not connect AC pass-through connectors to other devices without checking the *Product Information Guide*



6 Connect USB cable to hub and Host PC



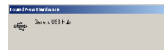
7 Connect peripheral² cables to peripherals and then hub when hot-plugging. NOTE: This order must be observed or damage may result to peripherals and/or hub



8 Turn power switch on. Ensure green "Status" LED is illuminated



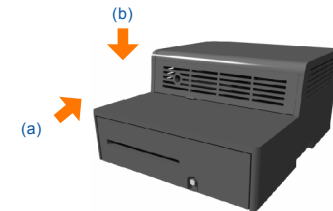
(Windows XP)



(Windows 2000)



9 Allow Windows to install drivers for devices. Ensure green "Host" and green "Port" LEDs are illuminated. Amber "Port" LEDs indicate over-current



10 If Integrator is used, slide Integrator tray in (a) and replace cover (b)



Information in this document is subject to change without notice.
© 2006 Dell Inc. All rights reserved.

Reproduction in any manner whatsoever without the written permission of Dell is strictly forbidden.
Dell and the DELL logo are trademarks of Dell Inc. Dell disclaims proprietary interest in the marks and names of others.

February 2006

2 - Cables not included. Peripherals sold separately.



Waste Electrical and Electronic Equipment (WEEE) Directive
In the European Union, this label indicates that this product should not be disposed of with household waste. It should be deposited at an appropriate facility to enable recovery and recycling.

For information on how to recycle this product responsibly in your country, please visit: www.euro.dell.com/recycling.

Printed in China

Free Manuals Download Website

<http://myh66.com>

<http://usermanuals.us>

<http://www.somanuals.com>

<http://www.4manuals.cc>

<http://www.manual-lib.com>

<http://www.404manual.com>

<http://www.luxmanual.com>

<http://aubethermostatmanual.com>

Golf course search by state

<http://golfingnear.com>

Email search by domain

<http://emailbydomain.com>

Auto manuals search

<http://auto.somanuals.com>

TV manuals search

<http://tv.somanuals.com>