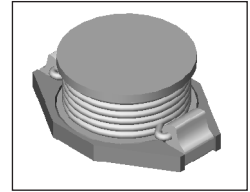


# SMT Power Inductor

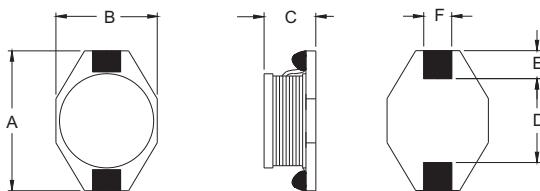
## SISH83 Type

### Features

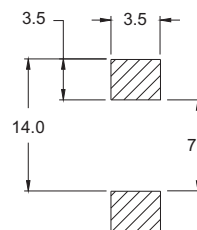
- RoHS compliant.
- Low profile (3.0mm max. height) SMD type.
- Unshielded, suitable for high density mounting.
- High energy storage and low DCR.
- Provided with embossed carrier tape packing.
- Ideal for power source circuits, DC-DC converter, DC-AC inverters inductor application.
- In addition to the standard versions shown here, customized inductors are available to meet your exact requirements.



### Mechanical Dimension:



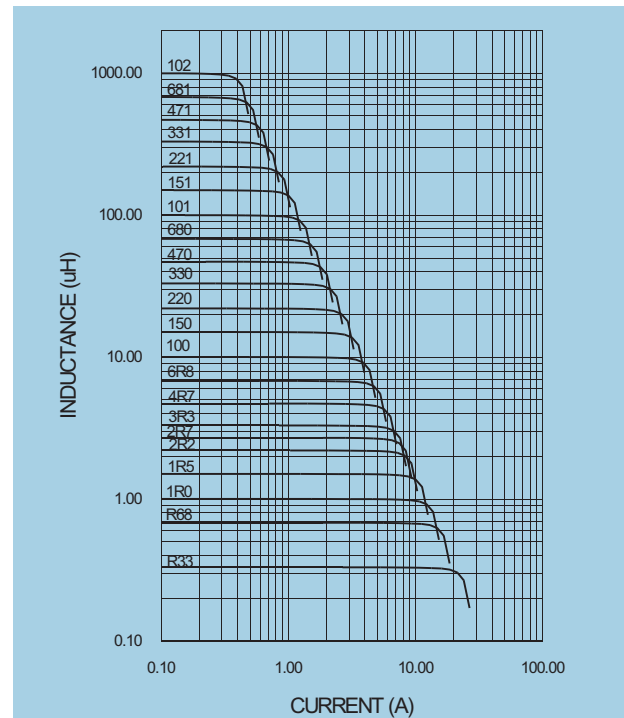
### RECOMMENDED PAD PATTERNS



UNIT:mm/inch  
 A = 12.94 / 0.510 Max.  
 B = 9.4 / 0.370 Max.  
 C = 3.0 / 0.118 Max.  
 D = 7.7±0.2 / 0.303±0.008  
 E = 2.5±0.2 / 0.098±0.008  
 F = 2.5±0.2 / 0.098±0.008

### Electrical Characteristics: 25°C: 100KHz, 0.1V

PART NO.	L <sup>1</sup> (uH)	DCR (Ω)MAX	Isat <sup>2</sup> (A dc)	I <sub>r</sub> <sup>3</sup> (A dc)
SISH83 - 100	10	0.090	2.4	2.00
SISH83 - 150	15	0.120	2.0	1.50
SISH83 - 200	22	0.190	1.6	1.30
SISH83 - 330	33	0.250	1.4	1.10
SISH83 - 470	47	0.320	1.0	0.80
SISH83 - 680	68	0.550	0.9	0.70
SISH83 - 101	100	0.700	0.7	0.60
SISH83 - 151	150	1.000	0.6	0.50
SISH83 - 221	220	1.600	0.5	0.40
SISH83 - 331	330	2.200	0.4	0.30
SISH83 - 471	470	3.300	0.3	0.20
SISH83 - 681	680	4.400	0.2	0.10
SISH83 - 102	1000	7.000	0.1	0.05



1. Tolerance of inductance: ±20%.
2. Isat is the DC current which cause the inductance drop less than 10% of its nominal inductance without current.
3. Ir is the DC current which cause the surface temperature of the part increase less than 45°C.
4. Operating temperature : -20°C to 105°C (including self-temperature rise)



**DELTA ELECTRONICS, INC.**

(TAOYUAN PLANT CPBG) 252, SAN YING ROAD, KUEISAN INDUSTRIAL ZONE, TAOYUAN SHIEN, 333, TAIWAN, R.O.C.

TEL: 886-3-3591968; FAX: 886-3-3591991

<http://www.deltawww.com>

## Free Manuals Download Website

<http://myh66.com>

<http://usermanuals.us>

<http://www.somanuals.com>

<http://www.4manuals.cc>

<http://www.manual-lib.com>

<http://www.404manual.com>

<http://www.luxmanual.com>

<http://aubethermostatmanual.com>

Golf course search by state

<http://golfingnear.com>

Email search by domain

<http://emailbydomain.com>

Auto manuals search

<http://auto.somanuals.com>

TV manuals search

<http://tv.somanuals.com>