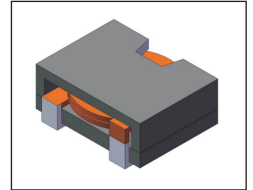


# SMT Power Inductor

## HMR1350B, 1362, 1365, 1368 & 1370 Type

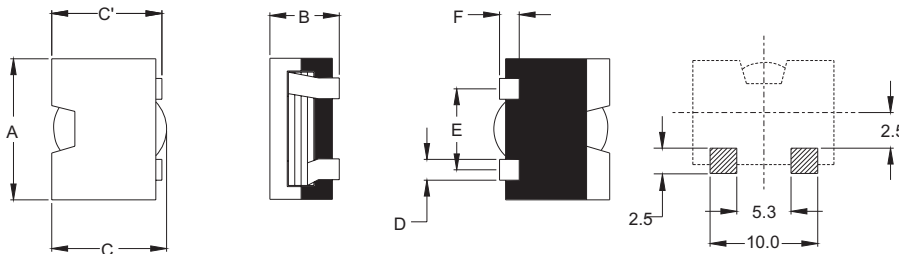
### Features

- RoHS compliant.
- Low profile, SMD type.
- High current.
- Magnetic shielded.
- High energy storage and low DCR.
- Provided with embossed carrier tape packing.
- Ideal for power source circuits, DC-DC converter, DC-AC inverters inductor applications.
- In addition to the standard versions shown here, customized inductors are available to meet your exact requirements.



### Mechanical Dimension :

#### RECOMMENDED PAD PATTERNS



UNIT : mm/inch  
 A = 12.80 / 0.504 Max.  
 C = 10.20 / 0.402 Max.  
 C' = 10.00 / 0.394 Max.  
 D = 1.80 / 0.071  
 E = 7.65 / 0.301  
 F = 2.00 / 0.09

### Electrical Characteristics : 25°C, 100KHz, 1V

PART NO.	$L_o^1$ ( $\mu$ H)	$L_i$ ( $\mu$ H) MIN.	DCR ( $m\Omega$ ) MAX	$I_{sat}^2$ (A dc)	$I_{rms}^3$ (A dc)	HEIGHT "B" (mm/inch) MAX.
HMR1350B-7R0	7.0	5.60	17.00	8.0	7.8	5.0 / 0.197
HMR1362-5R6	5.6	4.48	7.20	10.0	11.0	6.2 / 0.244
HMR1362-100	10.0	8.00	17.00	7.8	8.0	6.2 / 0.244
HMR1365-5R6	5.6	4.45	6.00	8.0	13.0	6.5 / 0.256
HMR1368-1R4	1.4	1.10	1.74	16.0	25.0	6.8 / 0.268
HMR1368-4R5	4.5	4.20 $\pm$ 20%	5.10	12.0	14.0	6.8 / 0.268
HMR1370-100	10.0	8.00	17.00	7.8	9.0	7.0 / 0.276

1. Tolerance of inductance is  $\pm$  20%.
2.  $I_{sat}$  is the DC current which cause the inductance drop to  $L_i$ .
3.  $I_{rms}$  is the DC current which cause the surface temperature of the part increase less than 45°C.
4. Operating temperature : -20°C to 105°C ( including self-temperature rise ).



**DELTA ELECTRONICS, INC.**

(TAOYUAN PLANT CPBG) 252, SAN YING ROAD, KUEISAN INDUSTRIAL ZONE, TAOYUAN SHIEN, 333, TAIWAN, R.O.C.  
 TEL: 886-3-3591968; FAX: 886-3-3591991  
<http://www.deltaww.com>

## Free Manuals Download Website

<http://myh66.com>

<http://usermanuals.us>

<http://www.somanuals.com>

<http://www.4manuals.cc>

<http://www.manual-lib.com>

<http://www.404manual.com>

<http://www.luxmanual.com>

<http://aubethermostatmanual.com>

Golf course search by state

<http://golfingnear.com>

Email search by domain

<http://emailbydomain.com>

Auto manuals search

<http://auto.somanuals.com>

TV manuals search

<http://tv.somanuals.com>