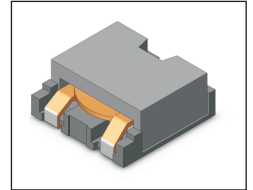


# SMT Power Inductor

## HMU1356L Type

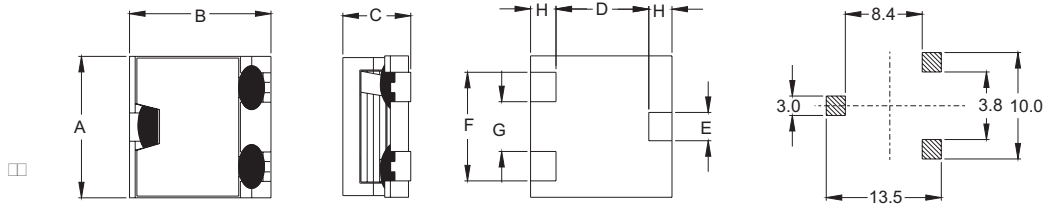
### Features

- RoHS compliant.
- Low profile, SMD type.
- High current.
- Magnetic shielded.
- High energy storage and low DCR.
- Provided with embossed carrier tape packing.
- Ideal for power source circuits, DC-DC converter, DC-AC inverters inductor applications.
- In addition to the standard versions shown here, customized inductors are available to meet your exact requirements.



### Mechanical Dimension :

#### RECOMMENDED PAD PATTERNS



UNIT : mm/inch

A = 12.60±0.4 / 0.496±0.016
B = 12.70±0.3 / 0.500±0.012
C = 5.60/ 0.220 Max.
D = 8.95/ 0.352
E = 2.50/ 0.098
F = 9.50/ 0.374
G = 4.30/ 0.169
H = 1.90/ 0.075

### Electrical Characteristics : 25°C, 100KHz, 1V

PART NO.	L <sup>1</sup> (uH)	DCR (mΩ) MAX	I <sub>sat</sub> <sup>2</sup> (A dc)	I <sub>rms</sub> <sup>3</sup> (A dc)
HMU1356L-0R6	0.6	1.5	23.0	19.5
HMU1356L-1R5	1.5	2.2	14.0	18.0
HMU1356L-2R5	2.5	3.4	10.0	15.5
HMU1356L-4R0	4.0	5.4	8.3	12.5
HMU1356L-6R0	6.0	8.0	6.7	9.9
HMU1356L-8R2	8.2	11.4	5.8	8.2
HMU1356L-100	10.0	13.5	5.0	7.6

1. Tolerance of inductance is ±20%.
2. I<sub>sat</sub> is the DC current which cause the inductance drop approximately 20% of is nominal inductance without current.
3. I<sub>rms</sub> is the DC current which cause the surface temperature of the part increase less than 45°C.
4. Operating temperature : -20°C to 105°C ( including self-temperature rise ).



**DELTA ELECTRONICS, INC.**

(TAOYUAN PLANT CPBG) 252, SAN YING ROAD, KUEISAN INDUSTRIAL ZONE, TAOYUAN SHIEN, 333, TAIWAN, R.O.C.  
 TEL: 886-3-3591968; FAX: 886-3-3591991  
<http://www.deltaww.com>

## Free Manuals Download Website

<http://myh66.com>

<http://usermanuals.us>

<http://www.somanuals.com>

<http://www.4manuals.cc>

<http://www.manual-lib.com>

<http://www.404manual.com>

<http://www.luxmanual.com>

<http://aubethermostatmanual.com>

Golf course search by state

<http://golfingnear.com>

Email search by domain

<http://emailbydomain.com>

Auto manuals search

<http://auto.somanuals.com>

TV manuals search

<http://tv.somanuals.com>