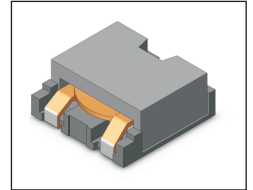


SMT Power Inductor

HMU1356S Type

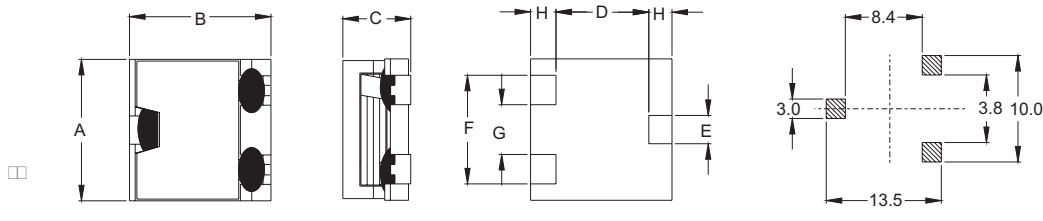
Features

- RoHS compliant.
- Low profile, SMD type.
- High current.
- Magnetic shielded.
- High energy storage and low DCR.
- Provided with embossed carrier tape packing.
- Ideal for power source circuits, DC-DC converter, DC-AC inverters inductor applications.
- In addition to the standard versions shown here, customized inductors are available to meet your exact requirements.



Mechanical Dimension :

RECOMMENDED PAD PATTERNS



UNIT : mm/inch
 A = 12.60±0.4 / 0.496±0.016
 B = 12.70±0.3 / 0.500±0.012
 C = 5.60/ 0.220 Max.
 D = 8.95/ 0.352
 E = 2.50/ 0.098
 F = 9.50/ 0.374
 G = 4.30/ 0.169
 H = 1.90/ 0.075

Electrical Characteristics : 25°C, 100KHz, 1V

PART NO.	L ¹ (uH)	DCR (mΩ) MAX	I _{sat} ² (A dc)	I _{rms} ³ (A dc)
HMU1356S-R47	0.47	1.5	28.8	19.5
HMU1356S-1R0	1.00	2.2	20.0	18.0
HMU1356S-1R8	1.80	3.4	15.3	15.5
HMU1356S-2R8	2.80	5.4	12.3	12.5
HMU1356S-4R0	4.00	8.0	10.3	9.9
HMU1356S-5R6	5.60	11.4	8.8	8.2
HMU1356S-7R2	7.20	13.5	7.8	7.6

1. Tolerance of inductance is ± 20%.
2. I_{sat} is the DC current which cause the inductance drop approximately 20% of is nominal inductance without current.
3. I_{rms} is the DC current which cause the surface temperature of the part increase less than 45°C.
4. Operating temperature : -20°C to 105°C (including self-temperature rise).



DELTA ELECTRONICS, INC.

(TAOYUAN PLANT CPBG) 252, SAN YING ROAD, KUEISAN INDUSTRIAL ZONE, TAOYUAN SHIEN, 333, TAIWAN, R.O.C.
 TEL: 886-3-3591968; FAX: 886-3-3591991
<http://www.deltaww.com>

Free Manuals Download Website

<http://myh66.com>

<http://usermanuals.us>

<http://www.somanuals.com>

<http://www.4manuals.cc>

<http://www.manual-lib.com>

<http://www.404manual.com>

<http://www.luxmanual.com>

<http://aubethermostatmanual.com>

Golf course search by state

<http://golfingnear.com>

Email search by domain

<http://emailbydomain.com>

Auto manuals search

<http://auto.somanuals.com>

TV manuals search

<http://tv.somanuals.com>