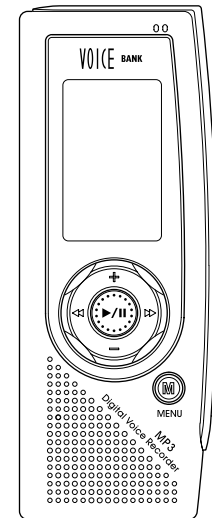


User Guide manual

DIGITAL VOICE RECORDER

MODEL : DDR-5000



January, 2005
Printed in Korea

Thank you for purchasing PORTABLE DIGITAL AUDIO PLAYER from DIASONIC TECHNOLOGY Co. Please carefully read the Instruction manual for safe use of the product. We recommend that you to keep this instruction manual for future reference.

INFORMATION TO THE USER

WARNING

Changes or modifications not expressly approved by the manufacturer could void the user's authority operate the equipment.

This device complies with Part 15 of the FCC Results. Operation is subject to the following

two conditions:

- (1) This Device may not cause harmful interface, and
- (2) This device must accept any interference received, including interference that may cause undesired operation.

Preface

Thank you for purchasing Disonic MP3 Player.
Please read this instruction manual carefully before use.

Precautions :

- Do not repair, disassemble or modify the unit at your own discretion.
- The memory content may be changed or lost due to misuse, static electricity or electric shock during the repair or battery change. Be sure to make a note of important content.
- Disonic assumes no responsibility for any damage caused by change or loss of memory content.
- Do not drop the unit in the water or keep it in any damp environment.
- This instruction manual is subject to change without notice for the purpose of product improvement.

Copyright

- The MP3 files created for MP3 conversion shall not be used for any commercial or public purposes. Any violation of the prohibition may be a breach of copyright laws.
- Any unauthorized reproduction of recorded files for any other purposes than personal use is strictly prohibited by the relevant laws and regulations.

Note

This instruction manual is required for the effective use of Disonic MP3 Player. Pay special attention not to lose the manual as it is not provided separately from the unit.

Safety Precautions

⚠ Warning

- Keep the batteries out of reach of the children. If a child swallowed a battery, please consult a doctor immediately.
- Do not have the battery shorted, disassembled, heated or put in fire. This may cause leakage, heat, explosion or fire.
- If the battery leakage gets in your eyes, wash it off with clean water, and seek immediate medical treatment. If not, you may lose your sight.
- If the LCD is damaged, do not touch the liquid. If the liquid contacts your eyes or skin, wash it off with clean water, and seek immediate medical treatment.
- If you use the rechargeable batteries, read the user manuals for batteries and chargers carefully before use.
- Read this instruction manual carefully before use.

⚠ Using earphones

Road safety

- Do not use earphones while driving, cycling or operating any motorized vehicle. It may cause a traffic hazard and is illegal in some areas. It can also be dangerous to play your earphones at high volume while walking, especially at pedestrian crossings.

Preventing hearing damage

- Avoid using earphones at high volume. Hearing experts advise against continuous, loud and extended play.
- If you experience a ringing in your ears, reduce the volume or discontinue use.

Contents

Preface	2
Safety Precautions	3
Functions and Features	5
Parts and Components	7
Basic Function	11
Buttons	14
FM Radio	19
Mode Menu	21
Main Menu	23
Record in Recording Mode	31
Connecting External Device	32
Installation of Windows 98SE Driver	34
Uninstallation of Windows 98SE Driver	38
Managing Folders and Files	39
Deleting Files	42
Downloading Files	43
Formatting Files	44
Firmware Upgrade	46
General Specification	47
Warranty	50

Functions and Features

- DIGITAL VOICE RECORDER
 - UP TO 16,960 MIN RECORDING TIME(SP MODE AND 1GB)
 - 8FOLDERS TO ORGANIZE FILES
 - STORE UP TO 128 FILES FOR EACH FOLDER
 - CONTINUE FOLDER FUNCTION: AUTOMATICALLY MOVE TO NEXT FOLDER IF INDEX IS FULL.
 - VARIABLE RECORDING MODE (SHQ/HQ/SP IN MP3 FORMAT AND USER MODE IN MPEG1 LAYER3)
 - MIC SENSITIVITY ADJUSTABLE IN RECORDING.
 - PLAY BACK OPTION IN SLOW/STANDARD/FAST WITHOUT SOUND DISTORTION.(SPEED CONTROL IS NOT AVAILABLE FOR WMA, VBR FORMAT FILE.)
 - RECORDING INDICATOR WITH RED LED
 - TIMER RECORDER UP TO 3 DAILY, WEEKLY AND SPECIFIC DATE
 - 2 MODES OF ARS(AUTOMATIC RECORDING SYSTEM)
 - MODE A: ALL MESSAGES ARE RECORDED INTO 1 INDEX FILE.
 - MODE B: EACH MESSAGE HAS ITS OWN INDEX FILE IN SEQUENCE AFTER 3 SECONDS WITH NO SOUND BETWEEN PREVIOUS AND NEXT FILE.
 - PAUSE AND RESUME
 - MONITORING: MONITORING THE RECORDING BY EARPHONE ON RECORDING.
- MASS STORAGE
 - SIMPLY CONNECT IT TO PC. NO REQUIRED OPERATING PROGRAM & DRIVER CD(EXCEPTING WINDOWS 98SE)
 - PC AND MAC COMPATIBLE
 - EASY DRAG AND DROP FILE TRANSFERENCE
- FM RADIO
 - ENCODING FM BROADCASTING
 - 10 FREQUENCY PRESET

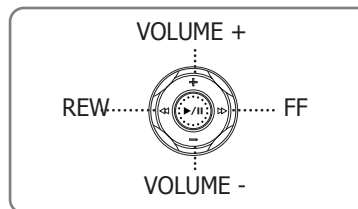
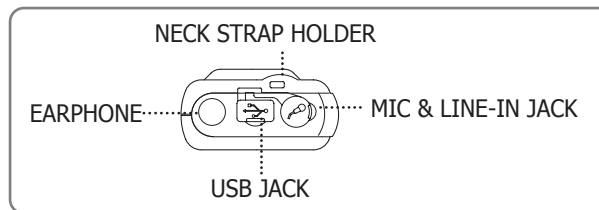
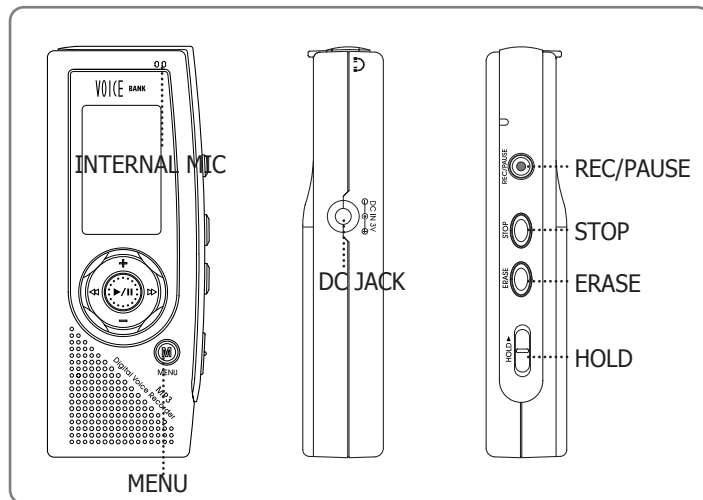
Functions and Features

- MP3/WMA PLAYER & ENCODER
 - ID3 TAG SUPPORT(ARTIST/TITLE)
 - SCROLL SPEED CONTROLLING
 - MULTI LANGUAGE SUPPORT
 - 5EQ (NORMAL/CLASSIC/LIVE/POP/ROCK)
 - SYNC FUNCTION: AUTOMATICALLY RECOGNIZE THE END AND BEGINNING OF THE MUSIC FROM EXTERNAL AUDIO DEVICE IN RECODING THRU CONNECTING AUDIO CABLE AND RECORD.

USER EASILY UPGRADES NEW FIRMWARE PROVIDED BY MAKER
EASY-TO-USE BUTTON FOR QUICK NAVIGATION THROUGH FOLDERS AND OPTIONS
SET UP THE ALARM TO PLAY AUTOMATICALLY AS A REMINDER TO MEETING, BIRTHDAY AND MORE.
EASY-TO-READ ALL STATUS ON THE LARGE BACKLIGHT LCD DISPLAY WITH DOT MATRIX
VARIABLE FLASH MEMORY UP TO
1G(64MB/128MB/256MB/512MB/1GB)
23HOURS PLAY BACK WITH 2 AAA BATTERIES(VOICE MODE)

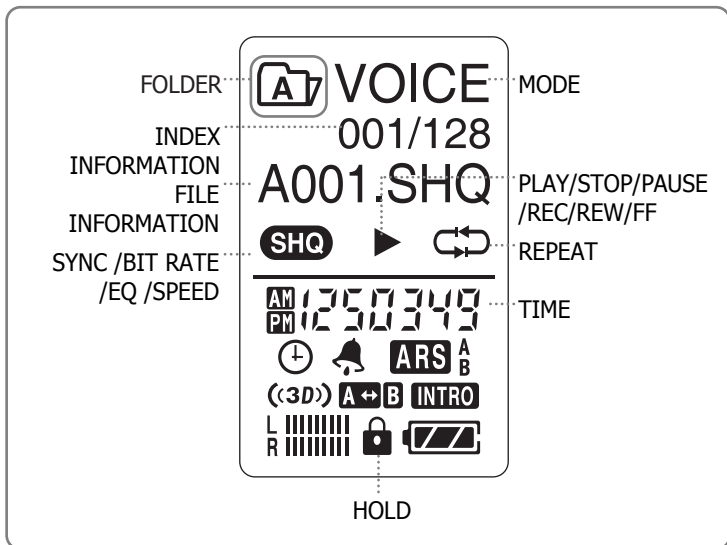
Parts and Components

Main set



Parts and Components

LCD

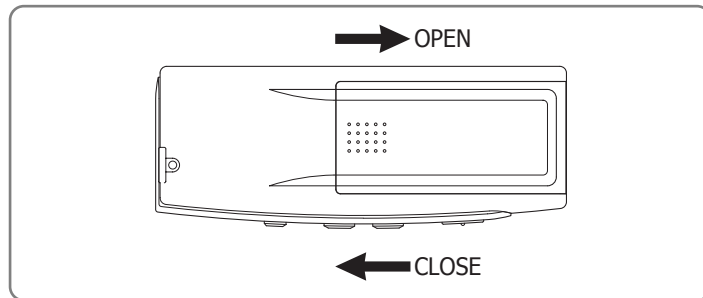


	TIMER ON/OFF		ALARM ON/OFF
	ARS ON/OFF		3D SOUND ON/OFF
	REPEAT		INTRODUCTION PLAY BACK
	L/R SPECTRUM		BATTERY STATUS

Parts and Components

BATTERY

1) PUT BATTERIES (LR03 TYPE)



2) BATTERY POWER STATUS INDICATOR

	FULL CHARGED
	SOME POWER CUSTOMED
	THINKING OF CHANGING BATTERY
	CHANGE BATTERY

CHECK THE POLARITIES OF THE BATTERIES IF LCD DISPLAY DOESN'T TURN ON AFTER INSERTING NEW BATTERIES.

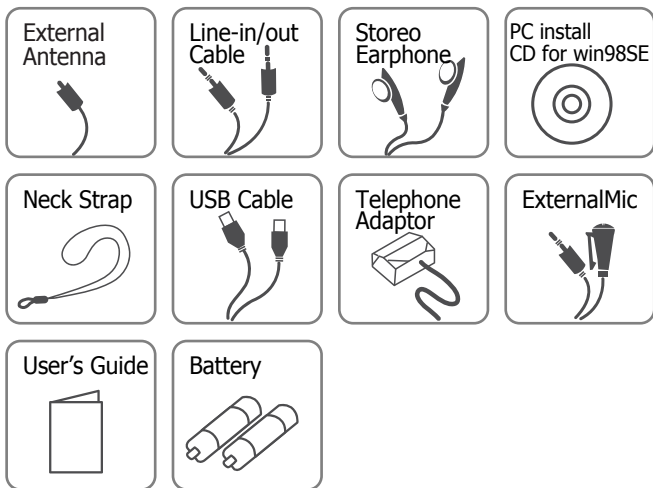
Parts and Components

3) TYPICAL BATTERY LIFE TIME(VOICE MODE)

BATTERY TYPE	RECORDING (VOLUME:MEDIUM)	PLAYBACK VIA SPEAKER (VOLUME:MEDIUM)	PLAYBACK VIA EARPHONE (VOLUME:MEDIUM)
2 AAA LR03	APPROX. 13HRS	APPROX. 13HRS	APPROX.23HRS

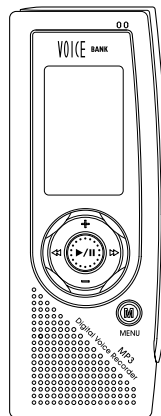
- BATTERY LIFE MAY BE DIFFERENT FROM ABOVE MENTIONED TIME ACCORDING TO BATTERY BRAND & CONDITION.
- DO NOT USE DIFFERENT TYPE AND BRAND BATTERY TOGETHER.
- WHEN THE DEVICE IS LEFT UNUSED FOR A LONG TIME, REMOVE BATTERIES.

ACCESSORY



Basic Function

TURN ON/OFF



TO TURN ON, HOLD THE OR KEY FOR 2-3 SECONDS.

TO TURN OFF, HOLD THE STOP KEY AGAIN WITH LONG KEY(over 3secs).

- IF USB CABLE IS CONNECTED, AUTOMATICALLY POWER IS ON.
- IF YOU PUT THE BATTERY TO DDR-5000 FOR THE FIRST TIME, "A" FOLDER IN THE VOICE MODE WILL DISPLAY.
- BEFORE USING THE DEVICE, WE RECOMMEND TO SET UP THE TIME AND DATE FOR ALARM & RESERVED RECORDING FUNCTIONS.

HOLD KEY

	HOLD ON	ALL KEYS WON'T WORK. WILL DISPLAY ON THE LCD.
	HOLD OFF	ALL KEYS WORK PROPERLY.

VOLUME

	VOLUME UP BY PRESSING "+" KEY.
	VOLUME DOWN BY PRESSING "-" KEY.

- VOLUME CAN BE ADJUSTABLE WITHIN 30 LEVEL(0-30).
- IF TURN ON, DEFAULT VOLUME(20) IS SET UP AUTOMATICALLY.

Basic Function

CHANGING MODE

BY PRESSING MENU BUTTON FOR 1-2 SECONDS, MODE MENU WILL DISPLAY.

FOR MOVING TO THE MODE WANTED, PRESS "REW/FF" BUTTON. SELECT THE MODE BY PRESSING "PLAY/PAUSE" BUTTON.

VOICE	MUSIC	L-IN ENC	FM ENC	FM	B-MARK	FOLDER
-------	-------	----------	--------	----	--------	--------

INTRO PLAY

THIS IS FOR PLAYING THE FIRST FEW SECONDS OF EVERY TRACK FOR QUICK REVIEW OF VOICE FILES OR MUSIC. PRESS "PLAY AND PAUSE" BUTTON DURING PLAYING BACK. THE **INTRO** ICON APPEARS ON THE LCD AND THE FIRST 5, 10 OR 15SECONDS OF EVERY TRACK PLAY, DEPENDING ON THE SELECTED TIME.

MENE BUTTON WITH LONG KEY -> TIME -> INTRO TIME(5, 10 OR 15 SECONDS)

A<->B REPEAT PLAY

TO DESIGNATE A SPECIFIC SECTION TO PLAY REPEATEDLY, PRESS THE "REC/PAUSE" BUTTON AT THE BEGINNING OF THE DESIRED SECTION FOR 1SECOND DURING PLAYING BACK. IF SO,THE **A↔B** IS DISPLAYED AND PRESS "REC/PAUSE" BUTTON AGAIN AT THE ENDING POINT. THE **A↔B** ICON APPEARS AND THE SELECTED SECTION REPEATEDLY PLAYS. TO END THE "A<->B PLAY", PRESS "REC/PAUSE" BUTTON AGAIN.

Basic Function

PLAYBACK SPEED CONTROL

A CURRENT SPEED DISPLAYS ON THE LCD BY PRESSING "REC/PAUSE" BUTTON FOR 2-3SECONDS DURING PLAYBACK. TO SELECT DESIRED SPEED (STANDARD(100%), FAST(120%) OR SLOW(80%)) BY PRESSING "REC/PAUSE" BUTTON FOR 2-3SECONDS DURING PLAYBACK. IF STOP, SPEED IS BACK TO STANDARD.

- (SPEED CONTROL IS NOT AVAILABLE TO WMA, VBR FILE FORMAT.)

REPEAT

WHEN FILE PLAYS BACK, REPEAT MODE CHANGES BY PRESSING "ERASE" BUTTON FOR 2-3SECONDS.

BOOKMARK SETTING

TO BOOKMARK A SELECTED MP3, WMA FILE, PRESS "STOP" BUTTON IN STOP FOR 1SECOND. FOR RELEASE THIS FUNCTION, PRESS "STOP" BUTTON ONCE AGAIN. "BOOKMARK" IS AVAILABLE IN THE MUSIC, LINE-IN ENC, FM ENC MODE.

PC CONNECTION

WHEN THE UNIT IS CONNECTED TO A PC VIA USB CABLE, USB ICON APPEARS ON THE LCD. IN THIS CASE, PLAYBACK IS NOT AVAILABLE.

EQUALIZER

ON PLAYING MP3 FILE BACK, USER CAN SELECT NORMAL/CLASSIC/LIVE/POP/ROCK BY PRESSING "ERASE" BUTTON. NORMAL/CLASSIC/LIVE/POP/ROCK IS CHANGED BY PRESSING "ERASE".

Buttons

VOICE MODE

BUTTON	OPERATION	THE STATUS OF SET		
		STOP	PLAYBACK	RECORDING
PLAY/ PAUSE	SHORT	PLAYBACK	PAUSE	REMAINING TIME
	LONG	-	INTRO PLAY	-
FF	SHORT	GO TO NEXT FILE	GO TO NEXT FILE AND PLAY	INCREASE INDEX (AFTER 5SECONDS)
	LONG	GO TO NEXT FILE IN SEQUENCE	S-FORWARD CURRENT FILE	-
REW	SHORT	GO TO PREVIOUS FILE	GO TO BEGINNING OF THE FILE, IF PLAY CURRENT FILE OVER 5SECONDS. PLAY PREVIOUS FILE, IF PLAY FILE UNDER 5 SECONDS	-
	LONG	GO TO PREVIOUS FILE IN SEQUENCE	S-BACKWARD CURRENT FILE	-
MENU /MODE	SHORT	ENTERING MODE OR RELEASE	ENTERING MODE OR RELEASE	-
	LONG	ENTERING MENU OR RELEASE	ENTERING MENU OR RELEASE	-
VOLUME+	SHORT	VOLUME UP	VOLUME UP	VOLUME UP
	LONG	AUTO VOLUME UP	AUTO VOLUME UP	AUTO VOLUME UP
VOLUME-	SHORT	VOLUME DOWN	VOLUME DOWN	VOLUME DOWN
	LONG	AUTO VOLUME DOWN	AUTO VOLUME DOWN	AUTO VOLUME DOWN
REC /PAUSE	SHORT	RECORDING	A<->B REPEAT	PAUSE
	LONG	RECORDING	PLAYBACK SPEED CONTROL	-

Buttons

BUTTON	OPERATION	THE STATUS OF SET		
		STOP	PALYBACK	RECORDING
ERASE	SHORT	ERASE 1 FILE	-	-
	LONG	ERASE ALL FILES (HOLD 2SECOND) ERASE ALL FOLDER(HOLD 2SEC.+2SEC.)	CHANGING REPEAT	-
STOP	SHORT	-	STOP CURRENT FILE	STOP RECORDING FILE
	LONG	POWER OFF	POWER OFF	-
HOLD		HOLD	HOLD	HOLD

Buttons

FM RADIO MODE

BUTTON	OPERATION	MODE		
		FREQUENCY MODE	PRESET MODE	SET UP THE STATION
PLAY /PAUSE	SHORT	ENTERING SETTING STATION	-	SETTING STATION
	LONG	PRESET	FREQ. MODE	-
FF	SHORT	TUNE FM FREQ. SLIGHTLY	FORWARD NEXT PRESET CH.	CHANNEL UP
	LONG	AUTO SEEK +	-	-
REW	SHORT	TUNE FM FREQ. SLIGHTLY	FORWARD PREVIOUS PRESET CH.	CHANNEL DOWN
	LONG	AUTO SEEK	-	-
MENU /MODE	SHORT	ENTERING MODE OR RELEASE	ENTERING MODE OR RELEASE	-
	LONG	ENTERING MENU OR RELEASE	ENTERING MENU OR RELEASE	-
SHORT		VOLUME UP	VOLUME UP	VOLUME UP
VOLUME+	LONG	VOLUME UP AUTOMATICALLY	VOLUME UP AUTOMATICALLY	VOLUME UP AUTOMATICALLY
	SHORT	VOLUME DOWN	VOLUME DOWN	VOLUME DOWN
VOLUME-	LONG	VOLUME DOWM AUTOMATICALLY	VOLUME DOWM AUTOMATICALLY	VOLUME DOWM AUTOMATICALLY
	SHORT	VOLUME UP	VOLUME UP	VOLUME UP
REC/PAUSE		RECORDING	RECORDING	-
ERASE		-	-	-
STOP	SHORT	STOP THE SEEK		
	LONG	POWER OFF	POWER OFF	POWER OFF
HOLD		HOLD	HOLD	HOLD

- IF THERE IS NO KEY OPERATION WITHIN 5SECS, THIS FUNCTION WILL BE RELEASED.
- EARPHONE WORK AS AN EXTERNAL ANTENNA FOR INCREASING RECEPTION. STRETCH IT OUT.

Buttons

MUSIC/L-IN ENC/FM ENC MODE

BUTTON	OPERATION	THE STATUS OF SET		
		STOP	PLAYBACK	RECORDING
PLAY/ PAUSE	SHORT	PLAY	PAUSE	REMAINING TIME
	LONG	-	INTRO PLAY	-
FF	SHORT	GO TO NEXT FILE	GO TO NEXT FILE AND PLAY	INCREASE INDEX (AFTER 5SECONDS)
	LONG	GO TO NEXT FILE IN SEQUENCE	S-FORWARD CURRENT FILE	-
REW	SHORT	GO TO PREVIOUS FILE	GO TO BEGINNING OF THE FILE, IF PLAY CURRENT FILE OVER 5SECONDS. PLAY PREVIOUS FILE, IF PLAY FILE UNDER 5 SECONDS	-
	LONG	GO TO PREV IOUS FILE IN SEQUENCE	S-BACKWARD CURRENT FILE	-
MENU /MODE	SHORT	ENTERING MODE OR RELEASE	ENTERING MODE OR RELEASE	-
	LONG	ENTERING MENU OR RELEASE	ENTERING MENU OR RELEASE	-
VOLUME+	SHORT	VOLUME UP	VOLUME UP	VOLUME UP
	LONG	AUTO VOLUME UP	AUTO VOLUME UP	AUTO VOLUME UP
VOLUME-	SHORT	VOLUME DOWN	VOLUME DOWN	VOLUME DOWN
	LONG	AUTO VOLUME DOWN	AUTO VOLUME DOWN	AUTO VOLUME DOWN
REC /PAUSE	SHORT	RECORDING	A→B REPEAT	PAUSE
	LONG	RECORDING	PLAYBACK SPEED CONTROL	-

Buttons

BUTTON	OPERATION	THE STATUS OF SET		
		STOP	PALY	RECORDING
ERASE	SHORT	ERASE 1 FILE	EQUALIZER	-
	LONG	ERASE ALL FILES (HOLD 2SECOND) ERASE ALL FOLDER (HOLD 2SEC. +2SEC.)	CHANGING REPEAT	-
STOP	SHORT	BOOKMARK	STOP	STOP RECORDING
	LONG	POWER OFF	POWER OFF	-
HOLD		HOLDHOLD	HOLD	

FM Radio

TURN ON FM



TURN ON THE SET AND SELECT FM IN THE MENU.

AUTOMATIC TUNING



FOR THE AUTOMATIC TUNING PRESS AND HOLD FORWARD OR REWIND BUTTON FOR 2SECONDS. THE TUNNER AUTOMATICALLY SCAN AND STOP ON THE NEXT STATION WITH A STRONG SIGNAL. IN AREA WITH WEAK RECEPTION, PRESS THE FAST FORWARD OR REWIND BUTTON TO FIND A CLEAR STATION.

PRESET STATION

AFTER SELECTING THE WANTED FREQUENCY BY "REW/FF", PRESS "PLAY/PAUSE". IF SO, THE CHANNEL 1 IS BLIKING. AT THIS TIME, MOVE TO THE CHANNEL TO SAVE BY PRESSING REW/FF AND SAVE IT BY PRESSING "PLAY/PAUSE".

- CHANNEL CAN BE CHECKED BY PRESSING "PLAY/PAUSE" FOR 2-3SECONDS AT THE FREQUENCY MODE.

FM Radio

RECORDING FM

IF YOU WOULD LIKE TO RECORD THE PRESENT LISTENING TO STATION, PRESS "REC" BUTTON.

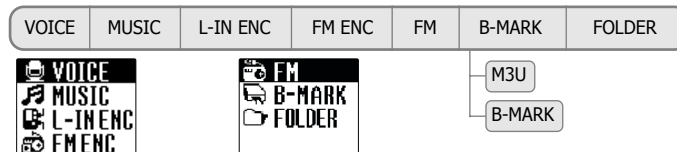
THE RECORDED FILE IS STORED AT "FM ENC" FOLDER WITH FILE NAME "FM001_048KBPS_20040101_010101.MP3" AND THE FILE NAME IS SEQUENTLY NAMED IN ORDER.

- NOISE MAY OCCUR WHEN RECORDING FM IN WEAK COVERAGE OR INSIDE OF THE BUILDING. IF SO, MOVE TO STRONG COVERAGE TO RECEIVE BETTER FM QUALITY.
THE EARPHONE WORKS AS AN ANTENNA, SO EXTEND IT AS MUCH AS IT CAN DO.
FOR BETTER RECEPTION OF FM, USE THE EARPHONE AND WHEN LISTENING TO FM THRU EXTERNAL SPEAKER, PLUG PROVIDED EXTERNAL ANETNNA TO THE DEVICE.

Mode Menu

YOU CAN GO TO "MODE MENU" BY PRESSING "MENU" BUTTON FOR 1 SECOND.

MODE MENU IS CONSIST OF BELOW MODE. TO MOVE TO ANOTHER MODE, USE "REW/FF" BUTTON.



VOICE

PLAY BACK VOICE FILE RECORDED IN VA001-008KBPS_20040101_010101.MP3 TYPE. FILE NAME IS STAMPED IN SEQUENCE.

VOICE MODE HAS 8 SUBORDINATED FOLDER AND WITHOUT SELECTING THE SPECIFIC FOLDER THAT USER WANT TO SAVE, EACH FOLDER CAN STORE 128FILES.

MUSIC

MP3 AND WMA PLAY IN THE SET, BUT IN VOICE, L-IN ENC AND FM EM ENC FOLDER IS NOT PLAYED.

BOOKMARK ON PLAYING FILE IS AVAILABLE.

999 FILES CAN BE RECORDER AS MUCH AS MEMORY IS AVAILABLE.

L-IN ENC

PLAY THE FILE IN L-IN ENC FOLDER.

FILE IS STAMPED IN LI001_128KBPS_20040101_010101.MP3. IN SEQUENCE.

256FILES CAN BE RECORDED AS MUCH AS MEMORY IS AVAILABLE.

Mode Menu

FM ENC

PLAY THE FILE IN FM ENC FOLDER.
FILE IS STAMPED IN FM001_128KBPS_20040101_010101.MP3. IN SEQUENCE.
256FILES CAN BE RECORDED AS MUCH AS MEMORY IS AVAILABLE.

FM

RECEIVING RADIO STATION.

B-MARK

B-MARK
STORE FAVORITE SONGS.(20FILES ARE AVAILABLE.)
BOOKMARK IS SET BY PRESSING STOP BUTTON ON THE MUSIC, L-IN ENC, FM_ENC MODE.
BOOKMARK IS DISPLAYED ON THE FILE INFORMATION.

M3U(WIN AMP)

INITIALLY PLAYLIST FOLDER OF M3U EXISTS AND M3U FORMAT FILE CAN BE SAVED AND PLAYED.
32 FILES CAN BE STORED.

- THE FONT IN THE SET MUST BE SAME AS THE FONT SELECTED IN M3U FILE.

FOLDER

IF SETTING THIS MENU, ALL FOLDERS ARE DISPLAYED EXCEPTING VOICE,FM_ENC, L-IN_ENC, PLAYLIST FOLDER.

IN SETTING THE FOLDER, YOU CAN SEE FILE INFORMATION AND ONLY PLAY MP3/WMA FILE IN THE SELECTED FOLDER. USER CAN ENTER INTO A SELECTED FOLDER BY PRESSING "PLAY" BUTTON IN FOLDER MODE. BY PRESSING "VOL +" OR "VOL -", USER GOES INTO A SELECTED FOLDER OR ESCAPES FROM A CURRENT SELECTED FOLDER.

- FOLDER SUPPORT SPEC.
 - ROOT:256ENTRY(FOLDER+FILE)
 - SUB DIRECTORY DEPT: 10DEPT INCLUDING ROOT
 - LIMITATION OF SUB DIRECTORY: 512(EXCLUDING ROOT AND RECORD FOLDER)

Main Menu

TO ENTER INTO "MAIN MENU", PRESS "MENU" BUTTON FOR 2-3SECONDS.

"REW/FF" BUTTON WORKS AS A MOVING BUTTON TO ANOTHER FUNCTION AND PRESS "PLAY/PAUSE" BUTTON FOR SELECTION OF THE FUNCTION YOU WANT. BY PRESSING MENU BUTTON AGAIN, YOU CAN GO OUT OF SUBORDINATE MENU. IF YOU DO NOT OPERATE ANY BUTTON AFTER ENTERING INTO MENU FOR 30 SECONDS, AUTOMATICALLY MENU FUNCTION WILL BE RELEASED.



TIME



USER CAN SET UP THE TIME RELATED TO PLAYER'S SYSTEM ON THIS MENU.
THIS MENU CONSISTS OF SET DATE, TIMER REC, ALARM PLAY, POWER OFF TIME, SLEEP TIME, INTRO TIME.





1. SET DATE :
USER SETS UP DATE AND TIME.

SET UP DATE

- ENTER INTO TIME MENU AND SELECT "SET DATE".
- SET UP THE YEAR, MONTH, DAY WHEN YOU WANT BY PRESSING "REW/FF" BUTTON FOR MOVEMENT AND "PLAY/PAUSE" BUTTON FOR SELECTION.

Main Menu


2.   **TIMER REC : RESERVATION RECORDING.**
(UP TO 10 AVAILABLE)

- USER MUST SET UP "SET DATE" FIRST.
 - ON THE SETTING DISPLAY, NO. 1 CHANNEL WILL BE BLINKING.
 - MOVE TO THE SPECIFIC NO. YOU WANT TO SET UP BY PRESSING "REW/FF" BUTTON AND PRESS "PLAY/PAUSE" BUTTON FOR SELECTION.

SETTING UP TIMER REC

- THE FUNCTION HAS DATE/DAILY/WEEKLY, 3 MODES.
 1. DATE (1 TIME)
 - a. ENTER INTO DATE.
SET UP YEAR, MONTH, DAY BY PRESSING "REW/FF" FOR MOVING AND "PLAY/PAUSE" FOR SELECTION.
 - b. IF IT IS COMPLETED, AUTOMATICALLY DISPLAY TRANSFERS TO TIME SETTING DISPLAY. TIME SETTING IS SAME AS THE PROCEDURE OF DATE.
 2. DAILY (PLAYBACK AT THE SAME TIME EVERYDAY)
 - a. ENTER INTO DAILY. SET UP HOUR, MINUTE AND SECOND BY PRESSING "REW/FF" FOR MOVING AND "PLAY/PAUSE" FOR SELECTION.
 3. WEEKLY (PLAYBACK AT THE SAME TIME PER WEEK)
 - a. ENTER INTO WEEKLY.
SET UP HOUR, MINUTE AND SECOND BY PRESSING "REW/FF" FOR MOVING AND "PLAY/PAUSE" FOR SELECTION AND THEN SET UP AS SAME AS PROCEDURE OF DAILY.
- AFTER COMPLETING, "TIMER" MARK WILL DISPLAY AND THEN IT WILL BE TRANSFERRED TO INITIAL DISPLAY AND BLINKING NO.2 OR THE CHANNEL WHICH DOES NOT SET. YOU CAN SET UP TO SAME FILE UP TO 10. IF YOU WANT DELETE THE CHANNEL SET, PRESS "ERASE" BUTTON ON THE CHANNEL SETTING DISPLAY.
- * CAUTION
 - RESEATION MODE IS ONLY OPERATED IN VOICE AND FM MODES.
FOR RESEATION RECORDING THRU LINE-IN, PLUG LINE-IN CABLE AND THEN SELECT THE LINE-IN ON THE SYSTEM/INPUT SELECTOR MENU.
 - IF DO NOT SET UP "SET DATE", IT WON'T EXACTLY WORK.
 - THE PAST CAN NOT BE SET UP.
 - CHECK THE TIME AVAILABLE FOR RECORDING BEFORE OPERATING THIS.
 - IF THE SELECTED FOLDER IS FULL OR MEMORY FULL, IT WON'T WORK.
<VOICE MODE : 128PCS EACH FOLDER/ FM ENC : 256PCS>
 - RESERVATION RECORDING IS OPERATED FIRST THAN OTHER FUNCTIONS.




Main Menu

3.  **ALARM PLAY : THE FILE SELECTED PLAYS BACK ON**
TIME WHEN IS SET UP IN ADVANCE.
(10PCS AVAILABLE)

SETTING UP ALARM PLAY

- THIS FUNCTION HAS DATE/DAILY/WEEKLY MODE.
 1. DATE (1 TIME)
 - a. ENTER INTO DATE.
SET UP YEAR, MONTH, DAY BY PRESSING "REW/FF" FOR MOVING AND "PLAY/PAUSE" FOR SELECTION.
 - b. IF IT IS COMPLETED, AUTOMATICALLY DISPLAY TRANSFERS TO TIME SETTING DISPLAY.
TIME SETTING IS SAME AS THE PROCEDURE OF DATE.
 2. DAILY (PLAYBACK AT THE SAME TIME EVERYDAY)
 - a. ENTER INTO DAILY.
SET UP HOUR, MINUTE AND SECOND BY PRESSING "REW/FF" FOR MOVING AND "PLAY/PAUSE" FOR SELECTION.
 3. WEEKLY (PLAYBACK AT THE SAME TIME PER WEEK)
 - a. ENTER INTO WEEKLY.
SET UP HOUR, MINUTE AND SECOND BY PRESSING "REW/FF" FOR MOVING AND "PLAY/PAUSE" FOR SELECTION AND THEN SET UP AS SAME AS PROCEDURE OF DAILY.
- AFTER COMPLETING, "ALARM" MARK WILL DISPLAY AND THEN IT WILL BE TRANSFERRED TO INITIAL DISPLAY AND BLINKING NO.2 OR THE CHANNEL WHICH DOES NOT SET. YOU CAN SET UP TO SAME FILE UP TO 10. IF YOU WANT DELETE THE CHANNEL SET, PRESS "ERASE" BUTTON ON THE CHANNEL SETTING DISPLAY.
- * CAUTION
 - IN ALARM PLAY, ONLY THE FILE WHICH IS SET PLAYS AND THEN STOPS. IN CASE OF FM MODE, THE STATION WHICH IS SET IS ON AIR WITH BLINKING ALARM MARK.
 - SETTING UP THE ALARM PLAY CAN BE DONE UNDER ALL MODES IS STOPPED. EXCEPTING "B-MARK" MODE.
 - IF DO NOT SET UP "SET DATE", IT WON'T WORK.
 - IF YOU WANT TO SET UP THE PAST TIME, IT WON'T EXACTLY WORK.
 - IF IT IS TIME FOR RESERVATION RECORDING WHEN ALARM PLAY, ALARM PLAY WILL BE STOPPED.
 - ALARM PLAY IS OPERATED FIRST THAN OTHER FUNCTIONS EXCEPTING RECORDING.




Main Menu

4. **POWER OFF**  POWER OFF TIME : 1MIN, 3MIN, 5MIN, ALWAYS ON AUTOMATIC POWER OFF TIME.
5. **SLEEP TIME**  SLEEP TIME : OFF, 15MIN, 30MIN, 45MIN, 60MIN, 75MIN, 90MIN, 105MIN, 120MIN AUTOMATICALLY TURN OFF AFTER THE TIME YOU SET UP.
6. **INTRO TIME**  INTRO TIME : 5SEC, 10SEC, 15SEC PLAYING FILE BACK FOR THE TIME YOU SET UP.

SOUND



THIS MENU HAS EQUALIZER, 3D SETTING, DEFAULT VOLUME.




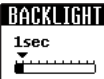
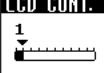
1. **EQUALIZER**  EQUALIZER : NORMAL, CLASSIC, LIVE, POP, ROCK, LIVE YOU CAN SELECT THE EQUALIZER YOU WANT.
2. **3D SETTING**  3D SETTING : BASS/TREBLE AT 1, 3, 5, 7, 9, 11, 13, 15 STEP PER EACH ADJUST THE 3D-SOUND EFFECT LEVEL.
3. **DEFAULT VOL**  DEFAULT VOLUME : 20~29, OFF IF SET UP THIS FUNCTION, THE DEFAULT VOLUME IS ON AT THE LEVEL AFTER TURN ON.

Main Menu

DISPLAY



THIS MENU IS FOR SETTING UP DISPLAY AND CONSISTS OF FONT, ID3 TAG, SCROLL SPEED, BACKLIGHT TIME, LCD CONTRAST.

1. **FONT**  FONT: KOREAN, ENGLISH, JAPANESE, CHINESE (SIMPLIFY+TRADITIONAL), EUROPE, RUSSIAN YOU CAN SELECT THE LANGUAGE YOU WANT FOR ID3 TAG ON.
2. **ID3 TAG**  ID3 TAG : ON, OFF DISPLAY FILE INFORMATION
1. ON : DISPLAY Title, Artist
2. OFF : DISPLAY NAME ONLY
3. **SCR. SPEED**  SCROLL SPEED : 0~10 SPEED CONTROL FOR FLOWING FILE INFORMATION ON THE LCD UP TO 10LEVEL.
4. **BACKLIGHT**  BACKLIGHT TIME : OFF, 1~9 SEC, ALWAYS ON TIME FOR BACKLIGHT ON AND OFF
5. **LCD CONT.**  LCD CONTRAST : 1~10 LEVEL FOR BRIGHTNESS OF LCD (1-10LEVEL)

Main Menu

SYSTEM



THIS IS FOR PLAYER'S SYSTEM CONTROL. THIS CONSISTS OF LANGUAGE, SYNC, ARS, INPUT SELECTOR, MIC SENSITIVITY, RESUME, BITRATE, FM BAND, CONTINUE FOLDER, FORMAT, DEFAULT.

- LANGUAGE**
 ENGLISH
 GERMAN
 JAPANESE
LANGUAGE: ENGLISH, GERMAN, JAPANESE, CHINESE(SIMPLIFY+ TRADITIONAL)
YOU CAN SELECT THE LANGUAGE YOU WANT FOR MODE/MENU.
- REPEAT**
 NORMAL
 REPEAT ONE
 REPEAT ALL
REPEAT : NORMAL, REPEAT ONE, REPEAT ONE ALL, REPEAT ALL, SHUFFLE
NORMAL: ALL FILES PLAY BACK IN SEQUENCE.
REPEAT ONE: ONLY CURRENT FILE PLAYS BACK ONE TIME.
REPEAT ONE ALL: ONLY CURRENT FILE PLAYS BACK REPEATEDLY
REPEAT ALL: ALL FILES PLAY BACK REPEATEDLY
SHUFFLE: PLAY BACK RANDOMLY
- SYNC**
 OFF
 AUTO SYNC
SYNC(ONLY IN LINE-IN RECORDING) : AUTO SYNC, OFF
- AUTO SYNC : IN RECORDING THE SOUND FROM EXTERNAL DEVICE THRU LINE-IN, CREATING NEW FILE WITH STAMPING FILE NAME BY RECOGNIZING AUTOMATICALLY THE END AND BEGINNING OF THE SONG.
- OFF : IN RECORDING THE SOUND FROM EXTERNAL DEVICE THRU LINE-IN, ALL SOUNDS OR SONGS ARE RECORDED INTO ONE FILE, IF YOU SEPARATE.

Main Menu

- ARS**
 ARS OFF
 ARS A
 ARS B
ARS : A, B, OFF
IN RECORDING, IF THERE IS SOUND AT A WEAK SOUND FOR A CERTAIN TIME, RECORDING PAUSES AUTOMATICALLY FOR SAVING MEMORY, BUT IF THERE IS SOUND AT SPECIFIC LEVEL AGAIN, START RECORDING AGAIN.
(AUTOMATIC RECORDING SYSTEM)
- A : ALL SOUNDS ARE RECORDED INTO ONE FILE.
- B : THE SOUND AFTER PAUSING FOR 3 SECONDS, AUTOMATICALLY IT HAS ITS OWN INDEX.
- INPUT SEL.**
 EXT-MIC
 LINE IN
INPUT SELECTOR : LINE-IN / EXTERNAL-MIC
IN RECORDING, SELECT THE RECORDING METHOD.
- MIC SENS.**
 MIC LOW
 MIC HIGH
MIC SENSITIVITY : MIC LOW, MIC HIGH
SET UP THE SENSITIVENESS OF MICROPHONE.
- RESUME**
 OFF
 ON
RESUME : ON, OFF
WHEN TURNING ON AGAIN, THE SET RETURNS TO ITS CONDITION BEFORE TURNING OFF.
FOR SETTING, PRESS "STOP" BUTTON FOR 2-3SECONDS IN PLAYING BACK
- ON : PLAYING BACK FROM THE COUNTER WHERE IT STOPPED AT THE LAST.
- OFF : PLAYING BACK FROM THE INDEX WHERE IT STOPPED AT THE LAST.

Main Menu

8. **BIT RATE** BIT RATE : VOICE BITRATE, MP3 BITRATE
 VOICE
 MP3
SET UP THE BIT RATE IN VOICE RECORDING, LINE IN AND FM RECORDING.
- VOICE RECORDING : SHQ(32Kbps), HQ(16Kbps), SP(8Kbps)
- MP3 ENCODE : 48Kbps, 64Kbps, 96Kbps, 128Kbps, 192Kbps, 256Kbps
9. **FM BAND** FM BAND : WORLD, JAPAN, EUROPE
 WORLD
 JAPAN
 EUROPE
YOU CAN SELECT FM BAND YOU WANT.
1. WORLD: 87.50MHz ~ 108.00MHz, 100KHz STEP
2. JAPAN: 76.00MHz ~ 108.00MHz, 100KHz STEP
3. EUROPE: 87.50MHz ~ 108.00MHz, 50KHz STEP (DEFAULT: 87.50MHz)
10. **CONT. FOL.** CONTINUE FOLDER : ON, OFF
 OFF
 ON
IT WORKS IN VOICE MODE RECORDING.
- ON : IF INDEX RECORDED(128PCS) IS FULL FOR A FOLDER, AUTOMATICALLY MOVE TO NEXT FOLDER AND RECORDING CONTINUOUSLY.
- OFF : IF INDEX RECORDED(128PCS) IS FULL FOR A FOLDER, STOP RECORDING AND DISPLAY "INDEX FULL" ON THE LCD.
11. **FORMAT** FORMAT : YES, NO
 NO
 YES
● IT WON'T WORK IN PLAY/PAUSE & FM MODE. DO IT WITH ENOUGH BATTERY POWER. DO NOT TAKE THE BATTERY OUT IN FORMATTING.
12. **DEFAULT** DEFAULT : YES, NO
 NO
 YES
INITIALIZE ALL SETTING AND RETURN TO DEFAULT.

Record in Recording Mode

RECORDING METHOD

THE SET HAS 4 WAYS TO RECORD AS BELOW.

- 1) RECORDING THRU INTERNAL MIC : JUST PRESS "REC" BUTTON.
- 2) RECORDING THRU EXTERNAL MIC : PLUG EXTERNAL MIC INTO LINE IN JACK. SELECT EXTERNAL MIC ON SYSTEM/INPUT SELECTOR. PRESS "REC"
- 3) RECORDING THRU LINE IN FROM EXTERNAL DEVICE : PLUG LINE-IN CABLE INTO LINE IN JACK. SELECT LINE-IN ON SYSTEM/INPUT SELECTOR. PRESS "REC" REFER TO "CONNECTING EXTERNAL DEVICE"
- 4) RECORDING FM RADIO : REFER TO "FM RECORDING".

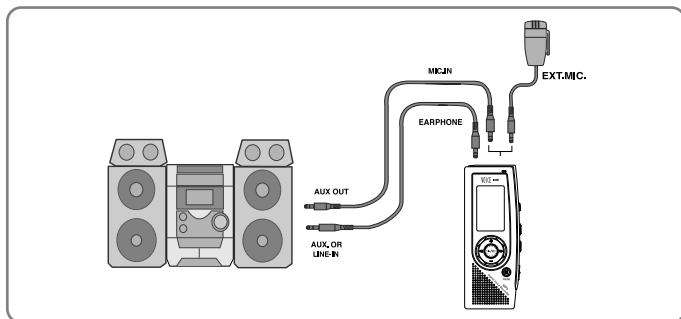
MAIN FEATURES

- 1) MONITORING RECORDING STATUS
IN RECORDING, YOU CAN CHECK WHAT IS RECORDING THRU EARPHONE.
 - 2) CHECK REMAINING TIME TO BE ABLE TO RECORD
YOU CAN CHECK THE REMAINING TIME BY PRESSING "PLAY/PAUSE" BUTTON IN RECORDING.
 - 3) SEPARATING FILE IN RECORDING
YOU CAN SEPARATE FROM THE CURRENT RECORDING FILE RECORDED OVER 5 SECONDS BY PRESSING "FF" BUTTON IN RECORDING AND CREATING NEW INDEX.
- IF THERE IS NO ENOUGH SPACE FOR RECORDING, THE FUNCTION WON'T WORK.
IF RECORDING TIME IS FULL, "MEMORY FULL" IS DISPLAYED. UP TO 256PCS AVAILABLE FOR RECORDING.

Connecting External Device

RECORDING FROM EXTERNAL DEVICE OR SET

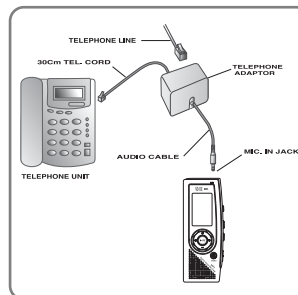
- 1) RECORDING EXTERNAL DEVICE TO DDR-5000
CONNECT THE PROVIDED AUDIO CABLE TO LINE IN JACK ON THE SET.
- 2) RECORDING DDR-5000 TO EXTERNAL DEVICE
CONNECT THE PROVIDED AUDIO CABLE TO EARPHONE JACK ON THE SET AND MICROPHONE OR LINE IN ON THE EXTERNAL DEVICE.



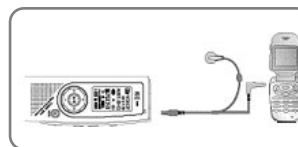
- WHEN CONNECTING EXTERNAL DEVICE, TURN OFF THE DEVICE AND SET.
READ AN EXTERNAL DEVICE'S MANUAL YOU WOULD LIKE TO CONNECT WITH ENOUGH TIME AND CAREFUL.
WHEN RECORDING FROM EXTERNAL DEVICE TO SET, VOLUME DOWN THE EXTERNAL DEVICE.
WHEN RECORDING FROM SET TO EXTERNAL DEVICE, SET THE VOLUME OF THE SET AT THE MIDDLE.

Connecting External Device

RECORDING FROM TELEPHONE AND MOBILE PHONE



CONNECT LINE-IN CABLE TO THE MICROPHONE JACK ON THE VOICE RECORDER AND TELEPHONE ADAPTOR. CONNECT TELEPHONE CABLE TO TELEPHONE ADAPTOR. PRESS "REC" BUTTON FOR RECORDING. IF YOU SET UP THE "ARS", AUTOMATICALLY START RECORDING IF THERE IS ANY SOUND AND PAUSING IF THERE IS NO SOUND.



CONNECT "CELLULAR EAR MICROPHONE" ONTO EXTERNAL MICROPHONE ON THE SET AND EARPHONE JACK ON THE MOBILE PHONE.

- CELLULAR EAR MICROPHONE IS OPTIONAL ITEM AND YOU MAY ASK RETAILER THAT YOU CAN PURCHASE.
IF YOU CELLULAR IS NOKIA BRAND, YOU MUST CHECK "CELLULAR EAR MICROPHONE" IS COMPATIBLE OR NOT.

Installation Of Windows 98SE Driver

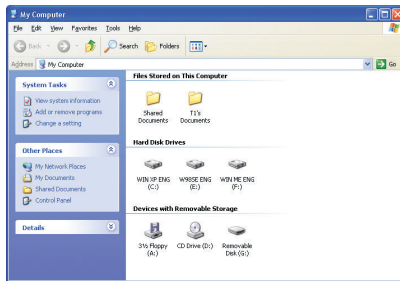
IT SUPPORTS USB MASS STORAGE AND IT CAN BE USED AS HARD DRIVE. IT CAN BE CONNECTED TO PC DIRECTLY WITHOUT ANY APPLICATION BY PLUG & PLAY METHOD ON WINDOWS ME, 2000, XP EXCEPT FOR WINDOWS 98SE.

-How to install Drive-

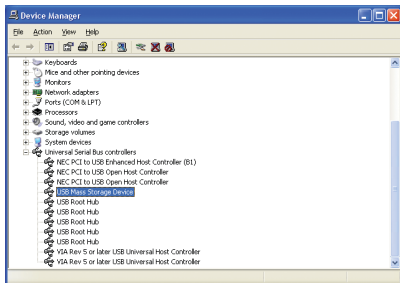
In case of Windows ME, 2000, XP

WHEN CONNECTING DEVICE TO PC BY USB PORT, "NEW HARDWARE DETECTED" IS SHOWN AND INSTALLATION BEGINS AUTOMATICALLY.

* IF YOU CLICK [MY COMPUTER], THE SET IS RECOGNIZED AS A PORTABLE DISK(F:) ON [MY COMPUTER] WINDOW. (*WINDOWS XP).



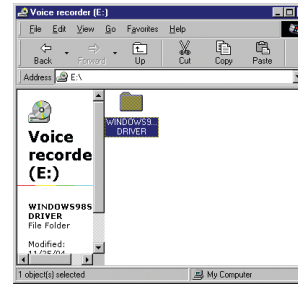
- WHEN THE USB DRIVER IS INSTALLED NORMALLY, IT IS RECOGNIZED AS A USB MASS STORAGE DEVICE AT DEVICE MANAGER IN MY COMPUTER.



Installation Of Windows 98SE Driver

In case of Windows 98 SE

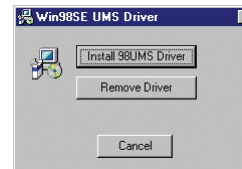
1. INSERT THE PROVIDED CD & IT WILL INDICATE HOW TO INSTALL.



2. CHECK "DVR-WIN98SE.EXE"



3. CLICK "INSTALL 98UMS DRIVER" AND AUTOMATICALLY INSTALL.

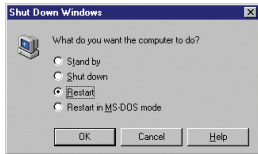


Installation Of Windows 98SE Driver

4. WHEN IT IS COMPLETED, BELOW POP-UP WILL APPEAR. CLICK "YES"



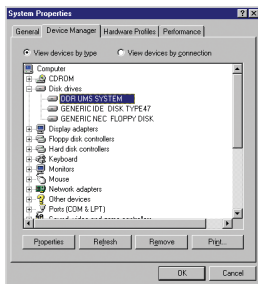
5. CLICK FOR REBOOTING THE COMPUTER.



6. AFTER REBOOTING, CONNECT THE SET & PC THRU USB CABLE. BELOW WINDOW WILL APPEAR.



7. EVERYTHING IS SUCCEED, IT CAN BE APPEARED AT SYSTEM PROPERTIES.



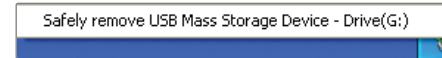
Installation Of Windows 98SE Driver

-REMOVING USB MASS STORAGE SAFELY-

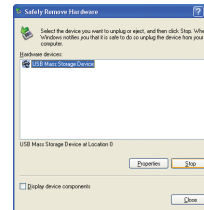
Windows ME, 2000, XP

WHEN THE SET REMOVE FROM CONNECTION, IT SHOULD DO IT THRU PROPER PROCEDURE AS BELOW. IF NOT, IT MIGHT CAUSE SERIOUS PROBLEM IN DATA.

1. CLOSE THE FILE TO OPEN.
2. CLICK " " BELOW THE WINDOW OF PC. IF SO, TOOL BAR AS BELWO WILL APPEAR AND CLICK THE TOOL BAR.



3. BELOW WINDOW WILL APPEAR, SO FOLLOW UP THE DIRECTION.
4. CLICK "DDR UMS SYSTEM USB DEVICE.



5. WHEN BELOW TOOL BAR APPEAR, REMOVE THE SET FROM PC.



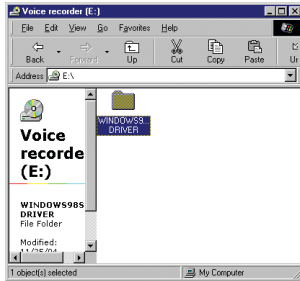
Windows 98SE

REMOVE IT FROM PC WITHOUT ANY PROCEDURE. AS Windows ME, 2000, XP.

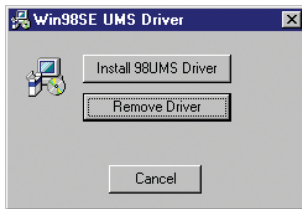
Uninstallation of Windows 98SE Driver

THE PROVIDED CD CONTAINS UNINSTALLING PROGRAM AUTOMATICALLY.

1. INSERT THE PROVIDED CD.
2. BOUBLE CLICK "DVR WIN98SE.EXE"



3. CLICK "REMOVE DRIVER"

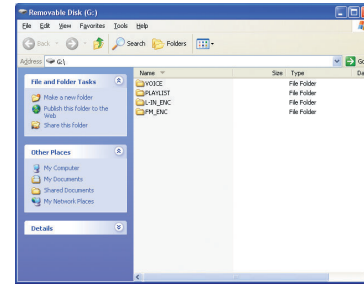


4. WHEN IT COMPLETE, BELOW WILL APPEAR AND CLICK "OK".



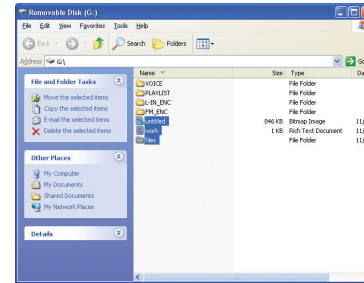
Managing Folders and Files

1. DEFAULT FOLDERS



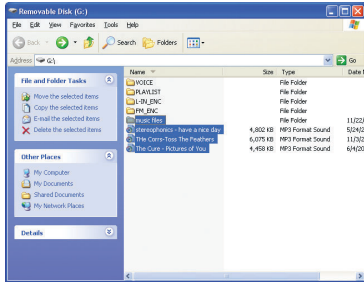
- WHEN YOU CONNECT THE UNIT TO PC, YOU CAN FIND THAT THE VOICE, L-IN_ENC, FM_ENC & PLAYLIST FOLDERS ARE CREATED AS A DEFAULT.

2. ALL FILE FORMATS CAN BE STORED AND REMOVED.



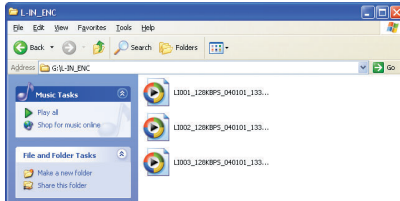
Managing Folders and Files

3. AUDIO MODE IS NOT DEFAULTED LIKE VOICE, L-IN_ENC, FM_ENC. CREATE IT ON THE PC AND CAN CHECK IT AT FOLDER & MUSIC MODE.



- THE CREATED FOLDER BY USER CAN BE CHECKED AT FOLDER ON THE MODE MENU AND ONLY MUSIC FILE IS DISPLAYED ON MUSIC MODE. FOLDER DOES NOT APPEAR.

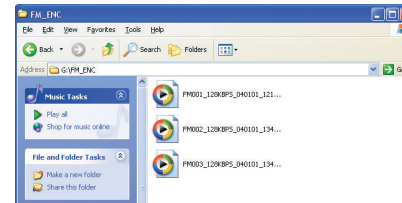
4. LINE IN MODE



- LINE IN MODE CONTAINS THE RECORDED FILES FROM EXTERNAL DEVICES THROUGH THE LINE-IN CABLE.
- WHEN RECORDING DATA, UP TO 256 FILES CAN BE CREATED IN SEQUENCE. IF THE NUMBER OF FILES EXCEEDS 256, THE "INDEX FULL" MESSAGE IS DISPLAYED.

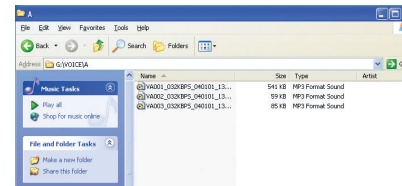
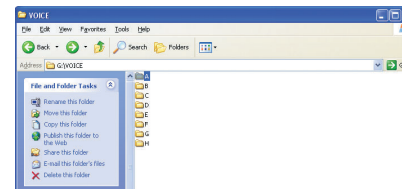
Managing Folders and Files

5. FM_ENC MODE



- FM_ENC MODE CONTAINS THE FILES RECORDED IN LISTENING TO RADIO.
- WHEN RECORDING DATA, UP TO 256 FILES CAN BE CREATED IN SEQUENCE. IF THE NUMBER OF FILES EXCEEDS 256, THE "INDEX FULL" MESSAGE IS DISPLAYED.

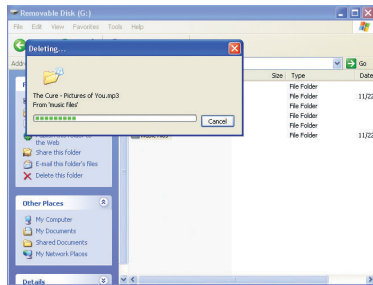
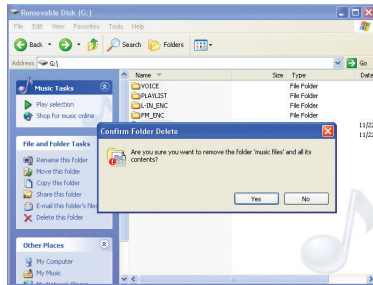
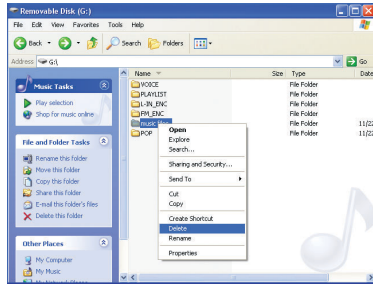
6. VOICE MODE



- VOICE MODE CONTAINS THE VOICE RECORDING FILES.
- WHEN RECORDING DATA, UP TO 1024 FILES CAN BE CREATED IN SEQUENCE. IF THE NUMBER OF FILES EXCEEDS 1024, THE "INDEX FULL" MESSAGE IS DISPLAYED.

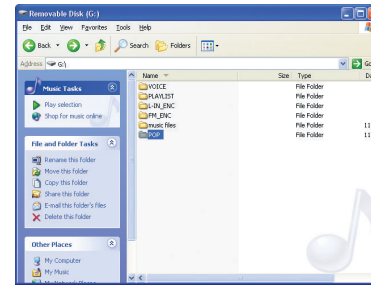
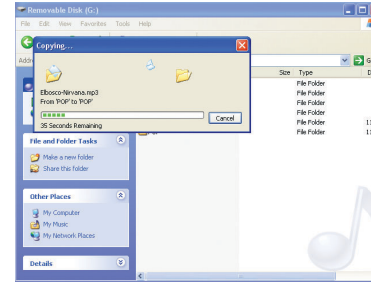
Deleting Files

THIS WORK IS SAME AS DONE IN PC.



Downloading Files

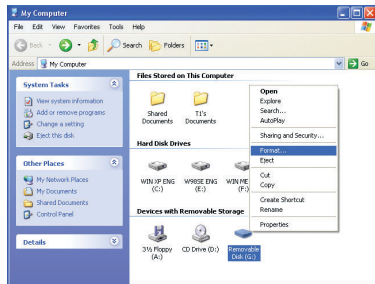
COPY MUSIC FILES OR DATA FROM PC FOLDER AND DOWNLOAD THEM TO DEVICE.



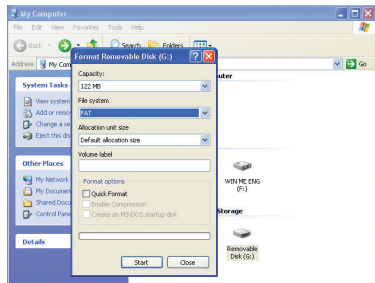
Formatting Files

FORMAT on PC

1. GO TO [MY COMPUTER], CHOOSE PORTABLE DISK(F:) AND CLICK RIGHT BUTTON OF MOUSE. FOLLOWING TOOLBAR APPEARS. AT THE TIME, CLICK FORMAT.

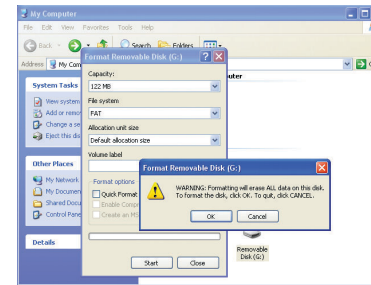


2. CLICK "START" WHEN FOLLOWING WINDOW APPEARS.
-THIS SET DOES NOT SUPPORT "FAT32". FORMAT MUST DO IN SETTING "FAT".

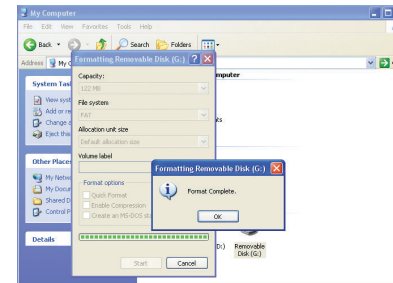


Formatting Files

3. CLICK "OK".



4. FORMAT IS COMPLETED.

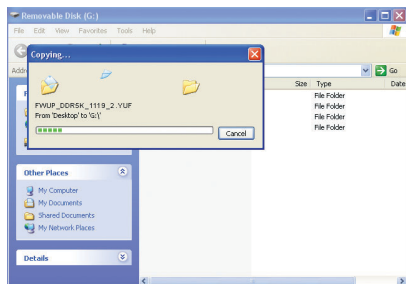


- DO NOT TAKE THE SET AWAY DURING FORMATTING. IT MAKE SERIOUS PROBLEM TO SET.
 - IF FORMATTING IN FAT32, DO IT BY FAT AT THE PC AGAIN.
 - AFTER REMOVING THE SET FROM PC IN FORMATTING WITH FAT32, "SYSTEM ERROR PLEASE FORMAT" WILL BE NOTICED ON THE SET. IF SO, PRESS "MENU" WITH LONG KEY AND THEN GO INTO SYSTEM/FORMAT IN THE MENU AND TRY TO FORMAT AGAIN.

Firmware Upgrade

THIS DEVICE HAS THE FEATURE WHICH IS TO IMPROVE FUNCTION AND CORRECT ERROR BY UPGRADING FIRMWARE. YOU CAN DOWNLOAD UPGRADE FILE BY CONNECTING TO WEBSITE.

1) COPY THE FIRMWARE AT THE ROOT DIRECTORY IN THE SET.



2) REMOVE THE SET & TURN OFF.

3) WHEN TURN ON, IT WILL UPGRADING AUTOMATICALLY AS BELOW.

Firmware
Upgrading
00%

Upgrade
Completed

After completed upgrading, set turn off AND TURN ON automatically

- BEFORE UPGRADING, BATTERY STATUS MUST BE CHECK. IF THE STATUS IS LOW, CHANGE IT. IT MIGHT CAUSE SERIOUS PROBLEM TO THE SET.

General Specification

MODEL	DDR-5000R (064)	DDR-5000R (128)	DDR-5000R (256)	DDR-5000R (512)
RECORDING TIME	SHQ:260min HQ:520min SP:1040min	SHQ:530min HQ:1060min SP :2120min	SHQ:1060min HQ:2120min SP :4240min	SHQ:2120min HQ:4240min SP :8480min
RECORDING MODE FOLDER	MP3 FORMAT : SHQ(32Kbps) / HQ(16Kbps) / SP(8Kbps) A/B/C/D/E/F/G/H (8 FOLDER)			
	Total 1024 Messages with 8 Separate Folder (128 Messages in Each Folder)			
ARS	Automatic Recording System (A-TYPE: ONE INDEX, B-TYPE: +INDEX)			
FM RECORDING EX-MIC	World Wide FM band / Japen FM band / Europe FM band Pin Mic			
MEMORY TYPE	Built-in Flash Memory(64MB/128MB/256MB/512MB/1GB)			
S/N	60dB (62dB input 1KHz, speaker output 50mW: SHQ mode)			
DISTORTION	1.5% ± 0.2 (62dB input 1KHz, speaker output 50mW : SHQ mode)			
REQUENCY RESPONSE	300Hz ~ 4.0KHz (-6dB)			
OUTPUT	Max 80mW(speaker 8ohm)			
REPEAT MODE	Normal/ One/ One All/ All/ Shuffle/A↔B repeat			
RECODING MDOE	One messages / all messages in file			
INTRO PLAY	5/10/15 sec in each messages			
SEARCHING	Easy file search & messages search			
ALRAM PLAY	10 program (Date / weekly(sun/mon/tue/wed/thu/fri/sat) / daily)			
TIMER RECORDING	10 program (Date / weekly(sun/mon/tue/wed/thu/fri/sat) / daily)			
S/N	60dB at 1mv 98.1MHz			
DISTORTION	0.8%(max) at 1mv 98.1MHz Δf=22.5KHz			
FREQUENCY RESPONSE	350Hz ± 30Hz, 3KHz ± 0.25KHz(100Hz~10KHz, 60dBuV)			
OUTPUT	Max 80mW (speaker 8ohm)			
FREQUENCY RANGE	World Standards : 87.5 ~ 108MHz(100Hz step) Europe Standards : 87.5 ~ 108MHz(50Hz step) Japan Standards : 76 ~ 108MHz(100Hz step)			

General Specification

MODEL		DDR-5000R with 256MB
MP3	BIT RATE	MP3 FORMAT : (256/192/128/96/64/48Kbps)
	S/N	85dB up (1KHz input 0dB)
	DISTORTION	0.3% ±0.1 (1KHz input 0dB)
	FREQUENCY RESPONSE	20Hz~20KHz
	OUTPUT EARPHONE	Max 5mW (16ohm)
	EQ	EQ : Normal / Classic / Live / Pop / Rock
	INTRO PLAY	5/10/15 sec in each track
	SEARCHING	Easy track search & track search
	REPEAT	Normal/ One/ One All/ All/ Shuffle/ A↔B
PC interface	INTERFACE	Mass Storage USB 1.1
	SYSTEM	CPU 200MHz more than , RAM 64MB more than, 20MB of free space
	OS	Windows98SE , Windows2000 , Windows ME , Windows XP, OVER Mac OS9.2, OS10
	SOUND CARD	Sound blaster 16 compatible
	DISPLAY	640 × 480 more than
INPUT /OUTPUT DEVICE	EXT. MIC	φ 3.5 plug-in power microphone(mini plug/ stereo) IMP less than 3KΩ
	EARPHONE	φ 3.5 earphone(mini plug/stereo) IMP less than 16Ω
	DC JACK	HOLE : φ 2.6, Dia : φ 0.65
	USB	Mini jack (PC : A TYPE)
SPEAKER	DIAMETER	φ 23 (IMP 8Ω)
	MAX. OUTPUT	80mW (volume max)
VOLUME LEVEL.		Digital volume (30 step)
BACK LIGHT		LED COLOR (BLUE, ORANGE)
MEMORY		NAND Flash Memory (64MB/128MB/256MB/512MB/1GB)
LED		Recording indicator display LED(RE D)

General Specification

MODEL		DDR-5000R with 256MB
LCD	DOT	80X64
	ICON DISPLAY	COUNTER,TIMER,ALARM,ARS,3DS,INTRO, L R SPECTRUM,HOLD,BATTERY
	DOT DISPLAY	MODE, MENU, INDEX, FILE NAME, EQ, REPEAT, PLAY SPEED
PLAYBACK SPEED		Slow (80%) , Fast (120%)
ADAPTER		DC3V / 200mA (CE,CUL,T,FCC)
OPERATING KEY		FF / PLAY(PAUSE) / REW , MENU / REC(PAUSE) / STOP / ERASE / VOL+ / VOL- , HOLD
POWER		3V , LR03 , two alkaline battery('AAA' size or UM-4)
BATTERY LIFE	VOICE PLAY	Approx. 23hour during the voice play(earphone output: volume middle position)
	VOICE RECORDING	Approx. 13hour during the voice REC (earphone output: volume middle position)
	RADIO RECEPTION	Approx. 23hour during the radio play (earphone output: volume middle position)
	MP3 PLAY	Approx. 18hour during the MP3 play (earphone output: volume middle position)
ACCESSORY		STEREO EARPHONE, LINE-IN CABLE, USB CABLE, TELEPHONE ADAPTOR, HAND STRAP, MANUAL, CD FOR WINDOWS98SE DRIVER, EXTERNAL MIC, EXTERNAL ANTENNA, BATTERY
OPTIONAL ITEM		REMOTE CONTROLLER(MODE/ FF/ PLAY(STOP)/ REW/ REC(PAUSE)/ VOL+/-) DC ADAPTOR/ CELLULAR EAR MICROPHONE
SIZE		H 92 × W 34 × D 19

Inquiry of A/S

When damage to device occurs, stop the use of the product and request for after service from our customer support staff at DIASONIC TECHNOLOGY CO.,LTD.
Phone: 82-31-474-0852 Ext.102, 103

Warranty Card(provisions)

We offer free repair service for product that malfunction under normal use, up to 1year from the original purchase date.
If breakdown occurs during warranty period mail product and the warranty card.
Warranty will be invalid if purchased date, purchase price and place of purchase price and place of purchase are missing from the receipt.
Please check and if the information is not written on the product refer to customer service at DIASONIC TECHNOLOGY CO.,LTD.
This warranty will not be reissued, so keep it safely.

<Free repair regulation>

1. Our product has gone through strict quality control and inspection.
If breakdown occurs from normal condition during warranty period you may receive free repair from our customer service department.
2. Even during warranty period, following situation will not grant free repair service.
 - 1) If you do not have a warranty card.
 - 2) If purchased year, month, day, name of customer and sales market are not written on the warranty card, Or if written information is modified.
 - 3) Breakdown or damage by mishandling of user.

Warranty Card(provisions)

- 4) Breakdown or damage by users own repair or modification.
- 5) Breakdown or damage caused by fire, pollution, and natural disaster.
- 6) Breakdown or damage caused by lealcage from battery.
- 7) When accessories(battery) need replacement.

<Request when mailing>

Please beware of following when mailing.

1. Contact our customer service department to receive a RMA # before mailing in the product.
2. Please enclose warranty card with the product when mailing during warranty period.
Please wrap in shock absorb material and put in box, mailing fee, wrapping fee, and any damage caused during mailing will be charge to a customer.
3. To prevent loss, please use registered mail.



Warranty Card

Product Category : Digital Voice Recorder

Model : DDR-5000

The Term of Guarantee : 1 Year

Date of Purchase :

PURCHASER	Name	
	Address	
	Telephone	
SELLER	Name	
	Address	
	Telephone	

- Please refer to our customer service department for any information or breakdown on the product
- Exchange, repair(charge. Free), refund and parts keeping period is depended on regulation of customer protection.
- Any questions or if you want to know more information about the product please contact DIASONIC TECHNOLOGY CO., LTD.
- This warranty is only applicable to a product purchased through authorized channel owned stores and dealers and to a product that is presented for repair in a country where DIASONIC offers the product for sale.

DIASONIC TECHNOLOGY CO., LTD.

#321-43, Suksu-Dong, Manan-ku, Anyang-City, Gyunggi province, Korea

Tel)+82-(0)31-474-0852x102, 103 Fax)+82-(0)31-474-0856

E-mail : diasonic@diasonic.com Web : www.diasonic.com

Free Manuals Download Website

<http://myh66.com>

<http://usermanuals.us>

<http://www.somanuals.com>

<http://www.4manuals.cc>

<http://www.manual-lib.com>

<http://www.404manual.com>

<http://www.luxmanual.com>

<http://aubethermostatmanual.com>

Golf course search by state

<http://golfingnear.com>

Email search by domain

<http://emailbydomain.com>

Auto manuals search

<http://auto.somanuals.com>

TV manuals search

<http://tv.somanuals.com>