

Art. 7854

D Gebrauchsanweisung
Schwimmpumpe SP 900, 12 V

GB Operating Instructions
Floating Pump SP 900, 12 V

F Mode d'emploi
Pompe flottante SP 900, 12 V

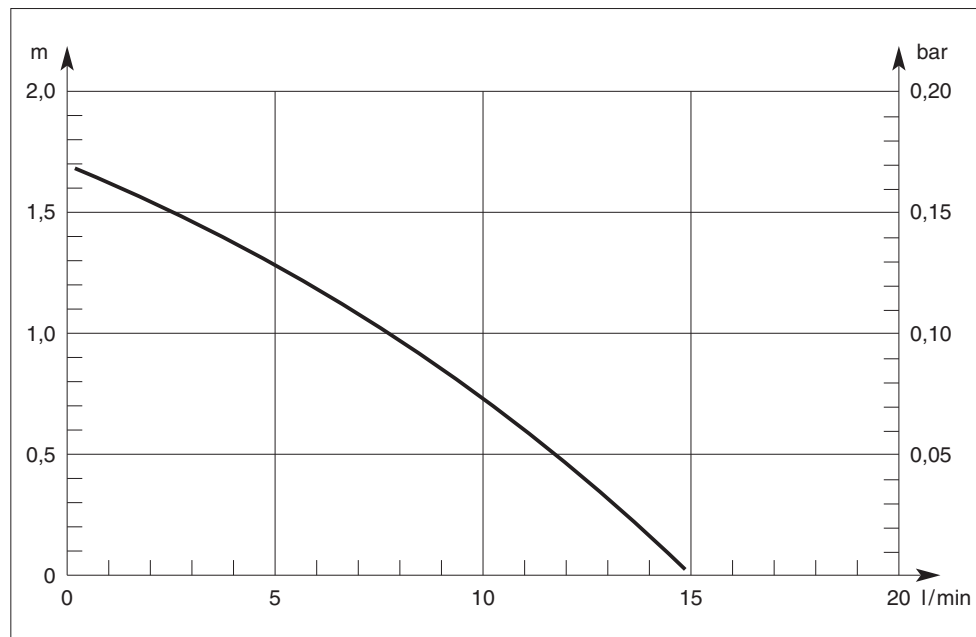
NL Gebruiksaanwijzing
Drijvende vijverpomp SP 900, 12 V

S Bruksanvisning
Flytpump SP 900, 12 V

I Istruzioni per l'uso
Pompa galleggiante SP 900, 12 V

E Manual de instrucciones
Bomba flotante SP 900, 12 V

DK Brugsanvisning
Flydepumpe SP 900, 12 V



D

Bitte lesen Sie diese
Gebrauchsanweisung
vor Inbetriebnahme Ihres
Gerätes sorgfältig.

	Seite
Gebrauchsanweisung	3 - 9

GB

Please read these operating
instructions carefully before
using the unit.

	Page
Operating instructions	10 - 15

F

Nous vous remercions de
bien vouloir lire attentive-
ment ce mode d'emploi
avant l'utilisation de votre
pompe.

	Page
Mode d'emploi	16 - 21

NL

Lees deze gebruiksaanwij-
zing voor ingebruikname
van het apparaat zorgvuldig
door.

	Pagina
Gebruiksaanwijzing	22 - 27

S

Läs igenom bruksanvisnin-
gen noggrant innan Du tar
Din GARDENA Pump i bruk.

	Sida
Bruksanvisning	28 - 33

I

Prima di mettere in uso
la nuova pompa, leggere
attentamente le istruzioni.

	pagina
Istruzioni per l'uso	34 - 39

E

Antes de la puesta en
marcha del aparato, acon-
sejamos una atenta lectura
del presente manual de
instrucciones.

	Página
Manual de instrucciones	40 - 45

DK

Læs venligst brugsanvis-
ningen omhyggeligt igen-
nem.

	Side
Brugsanvisning	46 - 51

GARDENA Floating Pump SP 900, 12 V

Welcome to GARDENA aquamation ...



Please read these operating instructions carefully and observe the notes given. Use the instructions to familiarise yourself with the equipment, the operating controls, their correct use, and the notes on safety.

For safety reasons, children under 16 as well as persons not familiar with these operating instructions should not use this pump.

Keep these operating instructions in a safe place.

The Applications Range of Your Pump

Intended purpose

GARDENA Floating Pumps have been designed for private use. They are not designed for operating watering tools and systems. The pumps may be used indoors as well as outdoors.

Attention

⚠ GARDENA Floating Pumps have not been designed for constant use in the industrial sector. Corrosive, easily combustible, aggressive or explosive substances (e.g. petrol, petroleum, nitro thinner) as well as salt-water or food / drinking water must not be pumped.

! For Your Safety

Operating the Pump

The transformer should be operated via a residual current device with a residual current rating of ≤ 30 mA (DIN VDE 0100-702 and 0100-738). Please ask your electrician for his advice.

Mains power cables

Mains power cables should not have a smaller cross-section than a rubber sheathed cable of the designation H05 RNF. Extension cables must meet the requirements of DIN VDE 0620.

For Austria

In Austria power cables should correspond to ÖVE-EM 42, T 2 (2000)/1979 § 22 according to § 2022.1. According to this standard pumps used in swimming pools and ponds should only be operated via an isolating transformer. Please contact your electrician.

For Switzerland

In Switzerland mobile appliances which are used outdoors, must be connected via a residual-current device.

Visual check

Before operating the pump, look to see if there is any damage of the pump (esp. regarding power cable and plug). A damaged pump must not be used. In case of damage, please have the pump checked by our GARDENA Service Centre or by an authorised electrician.

Check line voltage

Check line voltage. Data indicated on the type plate must match technical data of the mains supply.

Do not operate pump when there are people in the water

The pump must not be operated when there are people in the water.

Swimming pools and garden ponds

Swimming pools and garden ponds should be designed according to international and national design regulations. Please consult a professional electrician.

Do not use power cable to carry the pump

Do not use the power cable to carry the pump or to pull the plug out of the socket. Protect the power cable from heat, oil and sharp edges.

Disconnect plug

Please unplug the pump after operation and before carrying out any maintenance works.

Temperature of the liquid used

The temperature of the liquid used must not be below 4 °C or above 35 °C.

Wear and reduced output

Sand and other abrasive substances in the liquid cause increased wear and reduce the output of the pump.

Caution! 12 V low voltage

GARDENA pumps and plug connections have been designed exclusively for the use with 12 V low voltage. When connected to 230 V your life is at risk! Operate the pump only with the delivered transformer.

Do not expose the transformer to sunlight

Do not expose the transformer to direct sunlight.

Positioning the transformer

Ensure that the transformer is positioned in a place safe from flooding and at least 2 m away from the edge of the pond.

Observe local noise prevention regulations

Please observe the local noise prevention regulations.

Applications: Examples – System Extensions – Product Recommendations

Water jets for 26.5 mm (G 3/4) thread connections

→ Example for application:
Water jets may be integrated into water features.

→ Products:

GARDENA Cascade	Art. No. 7814*
GARDENA Water Bell	Art. No. 7816
GARDENA Waterfall	Art. No. 7822
GARDENA Cascade, Rotating	Art. No. 7823

* contained in delivery volume

Remote control

→ Application:

For operating water jets from the comfort of your patio or your living room.

→ Product:

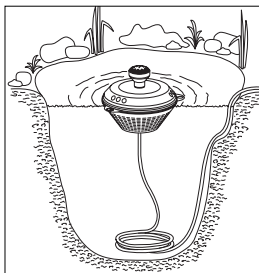
GARDENA Remote Control Set	Art. No. 7874
GARDENA Remote Control Socket	Art. No. 7875

Information

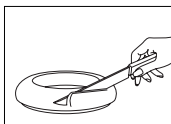
- Always unplug the pump first before working on it.
- Before assembling system extensions first unscrew the pre-assembled cascade of the pump and then screw one of the water jets on again.
- Follow the Safety and Assembly Information attached to the operating instructions.

Operation

Positioning the pump



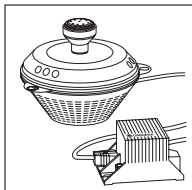
- Put the pump into the water and arrange excess cabling below the pump into a ring. This prevents the pump from floating to the edge of the pond.
- If the pump does not float level on the water, then it will need to be balanced.
 1. Dismantle the pump as described in the paragraph "Dismantling".
 2. Use the knife supplied to carefully cut off a section of the float (white styrofoam ring). The right balance can be found by turning the float.



Pay attention to minimum water depth

The pump must be able to float freely in the water. The water should be at least 20 cm deep.

Starting the pump



Put the plug connection into a free socket of the transformer and connect the power cable of the transformer with a 230 V AC socket.

⚠ Caution! Pump will start running immediately!

Avoid dry operation

Avoid dry operation of the pump as dry running will produce undesirable heat and destroy the pump.

Care Instructions

Delivery head too low and/or noisy operation

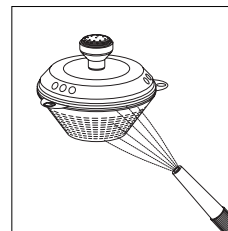
Take care that the pump is always completely submerged in water. A lack of water can cause the feed impeller to turn in the wrong direction.

→ Remedy:

Disconnect the plugs and fill the pump with water. Then connect the plugs again.

Cleaning the filter tank

The lower part of the pump must be completely free from dirt particles i.e. all filter outlets must be open. If they are obstructed by dirt, they should be cleaned as follows:



How to clean:

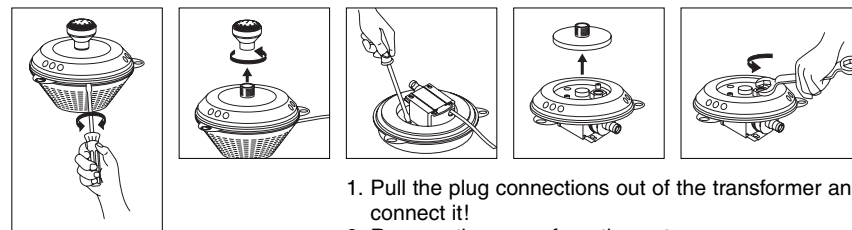
- Pull the plug connections out of the transformer and disconnect it!
- Remove the pump as a whole from the water and use a water jet and a soft brush to clean it.
 - Take care that all outlets are free of dirt.
- If there are deposits of dirt inside the pump then dismantle the casing (→ see „Dismantling“) and carefully clean the interior fittings with water.

Information: Do not use any hard objects or strong detergents!

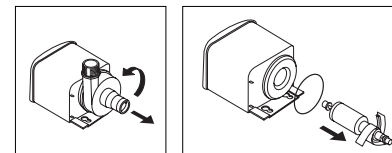
Blocked feed impeller

If the feed impeller becomes blocked, the pump and the filter should be cleaned (see above).

Dismantling



1. Pull the plug connections out of the transformer and disconnect it!
2. Remove the pump from the water.
3. Separate the upper part of the pump from the lower part using a coin or a broad screwdriver.
4. Screw off the fountain top.
5. Loosen both screws in the upper part next to pump and remove the cover.
6. Unscrew the nut using a spanner.
7. Remove the pump.
8. Turn the pump casing to the left to the limit stop and then pull it straight forwards and remove it! **Do not tilt!**
9. Pull the feed impeller out of the motor casing.



- Then assemble all the fittings reversing the order and direction in which they were dismantled. Please take care that the seal ring is properly re-fitted.
 - Make sure while assembling that you attach the pump casing with the pressure joint being cated, press it firmly and then turn it straight to the right.

Storage

Where to store



⚠ The pump should be stored out of the reach of children.

1. Remove the pump from the pond and store away from frost before the first frost sets in.
2. Clean and check the pump carefully.
3. Store the pump in a container filled with water.
The mains plug must not be submerged.

Information

Complaints/Repairs

If you have any problems with your Floating Pump, please contact our Service or return the defective unit together with a short description of the problem postage paid to one of the GARDENA Service Centres listed on the back of these operating instructions.

Product liability

We expressly point out that, in accordance with the product liability law, we are not liable for any damage caused by our units if it is due to improper repair or if parts exchanged are not original GARDENA parts or parts approved by us, and, if the repairs were not carried out by a GARDENA Service Centre or an authorised specialist. The same applies to spare parts and accessories.

Technical Data

Type	SP 900, 12 V
Art. No.	7854
Rated power	10 W
Flow	15 l/min
Max. delivery head	1.7 m
Max. submersion depth	1.0 m
Power cable	10 m H05 RNF
Fitting	26.5 mm (G 3/4) male thread
Max. media temperature	35 °C
Mains voltage	12 V
Frequency	50 Hz AC
Noise level $L_{WA}^{1)}$	48 dB(A)

¹⁾ Measuring method according to EN 60335-1

EU Certificate of Conformity

The undersigned

GARDENA Kress + Kastner GmbH · Hans-Lorenser-Str. 40 · D-89079 Ulm

hereby certifies that, when leaving our factory, the unit indicated below is in accordance with the harmonised EU guidelines, EU standards of safety and product specific standards.

This certificate becomes void if the unit is modified without our approval.

Description of the unit:

Floating Pump

Type:

SP 900, 12 V

Art. No.:

7954

EU directives:

Machinery Directive 98/37/EC

Electromagnetic Compatibility

89/336/EC

Low Voltage Directive

73/23/EC

Directive 93/68/EC

Harmonised

European standards:

EN 292-1

EN 292-2

EN 60335-1

EN 60335-2-41

Year of CE marking:

1999

Ulm, 01.06.1999

Thomas Heintl
Technical Dept. Manager

Guarantee

GARDENA guarantees this product for 3 years (from date of purchase). This guarantee covers all serious defects of the unit that can be proved to be material or manufacturing faults. Under warranty we will either replace the unit or repair it free of charge if the following conditions apply:

- The unit must have been handled properly and in keeping with the require-

ments of the operating instructions. Neither the purchaser nor a non-authorised third party have attempted to repair the unit.

Parts subject to wear (e.g. feed impeller) are excluded from this guarantee.

This manufacturer's guarantee does not affect the user's existing warranty claims against the dealer/seller.

In the event of a fault, please return the faulty unit together with the receipt and a description of the fault, with postage paid to the address of the Service Centre on the back of these operating instructions.

Deutschland

GARDENA Kress + Kastner GmbH
GARDENA Service
Hans-Lorensen-Straße 40
D-89079 Ulm
Produktfragen: (07 31) 490-123
Reparaturen: (07 31) 490-290

Argentina

Argensem S.A.
Venezuela 1075
(1618) El Talar - Buenos Aires

Australia

NYLEX Corporation Ltd.
25-29 Nepean Highway
P.O. Box 68
Mentone, Victoria 3194

Austria

GARDENA Österreich Ges. m.b.H.
Stettnerweg 11-15
2100 Korneuburg

Belgium

MARKT (Belgium) NV/SA
Sterrebeekstraat 163
1930 Zaventem

Brazil

M. Cassab
Av. das Nações Unidas, 20.882
Santo Amaro, CEP 04795-000
São Paulo - S.P.

Bulgaria / България

ДЕНЕКС ООД
бул. „Черни връх“ 43
София 1407

Canada

GARDENA Canada Ltd.
100, Summerlea Road
Brampton, Ontario
Canada L6T 4X3

Chile

Antonio Martinic Y CIA. LTDA.
Gilberto Fuenzalida 185 Loc.
Las Condes - Santiago de Chile

Costa Rica

Compania Exim
Euroiberoamericana S.A.
350 Sur del Automercado
Los Yoses
San Pedro

Cyprus

FARMOKIPIKI LTD
P.O. Box 7098
74, Digeni Akritia Ave.
1641 Nicosia

Czech Republic

GARDENA spol. s.r.o.
Ripská 20
62700 Brno

Denmark

GARDENA Danmark A/S
Naverland 8
2600 Glostrup

Finland

Habitec Oy
Martinkyläntie 52
01720 Vantaa

France

GARDENA France
Service Après-Vente
BP 50080
95948 ROISSY CDG Cedex

Great Britain

GARDENA UK Ltd.
27-28 Brenkley Way
Blezard Business Park
Seaton Burn
Newcastle upon Tyne
NE13 6DS

Greece

Agrokip G. Psomadopoulos & Co.
20, Lykourgou str.
Kallithea - Athens

Hungary

GARDENA Magyarország Kft.
Késmárk utca 22
1158 Budapest

Iceland

Heimilistaeki hf
Saetun 8
P.O. Box 5340
125 Reykjavik

Republic of Ireland

Michael McLoughlin & Sons
Hardware Limited
Long Mile Road
Dublin 12

Italy

GARDENA Italia S.r.l.
Via Donizetti 22
20020 Lainate (Mi)

Japan

KAKUDAI Mfg. Co. Ltd.
1-4-4, Itachibori Nishi-ku
Osaka 550

Luxembourg

Magasins Jules Neuberg
Grand Rue 30
Case Postale No. 12
Luxembourg 2010

Netherlands

MARKT (Holland) BV
Postbus 219
1380 AE Weesp

Neth. Antilles

Jonka Enterprises N.V.
Sta. Rosa Weg 196
P.O. Box 8200
Curaçao

New Zealand

NYLEX New Zealand Limited
Private Bag 94001
South Auckland Mail Centre
10 Offenhauser Drive
East Tamaki, Manukau

Norway

GARDENA Norge A/S
Postboks 214
2013 Skjetten

Poland

GARDENA Polska Sp. z o.o.
Szymanów 9 d
05-532 Baniocza

Portugal

MARKT (Portugal), Lda.
Recta da Granja do Marquês
Edif. GARDENA
Algueirão
2725-596 Mem Martins

Russia / Россия

АО АМИДА ТТЦ
ул. Мосфильмовская 66
117330 Москва

Singapore

Variware
Holland Road Shopping Centre
227-A 1st Fl., Unit 29
Holland Avenue
Singapore 1027

Slovenia / Croatia

Silk d.o.o. Trgovina
Brodišče 15
1236 Trzin

South Africa

GARDENA South Africa (Pty.) Ltd.
P.O. Box 11534
Vorna Valley 1686

Spain

ANMI Andreu y Miriam S.A.
Calle Pere IV, 111
08018 Barcelona

Sweden

GARDENA Svenska AB
Box 9003
20039 Malmö

Switzerland

GARDENA Kress + Kastner AG
Bitziberg 1
8184 Bachenbülach

Ukraine / Украина

АОЗТ АЛЬЦЕСТ
ул. Гайдара 50
г. Киев 01033

Turkey

Dost Diş Ticaret Mümesillik A.Ş.
Yeşilbağlar Mah. Başkent
Cad. No. 26
Pendik - İstanbul

USA

GARDENA
3085 Shawnee Drive
Winchester, VA 22604

7854-20.960.03/0001
GARDENA Kress + Kastner GmbH
Postfach 27 47, D-89070 Ulm
<http://www.gardena.de>

T3055136281C/Id.22397/07H

Free Manuals Download Website

<http://myh66.com>

<http://usermanuals.us>

<http://www.somanuals.com>

<http://www.4manuals.cc>

<http://www.manual-lib.com>

<http://www.404manual.com>

<http://www.luxmanual.com>

<http://aubethermostatmanual.com>

Golf course search by state

<http://golfingnear.com>

Email search by domain

<http://emailbydomain.com>

Auto manuals search

<http://auto.somanuals.com>

TV manuals search

<http://tv.somanuals.com>