

Harry Potter

TALKING PORTRAIT
ANIMATED ROOM ALARM

Item No. 36302
200103230IWTI-01

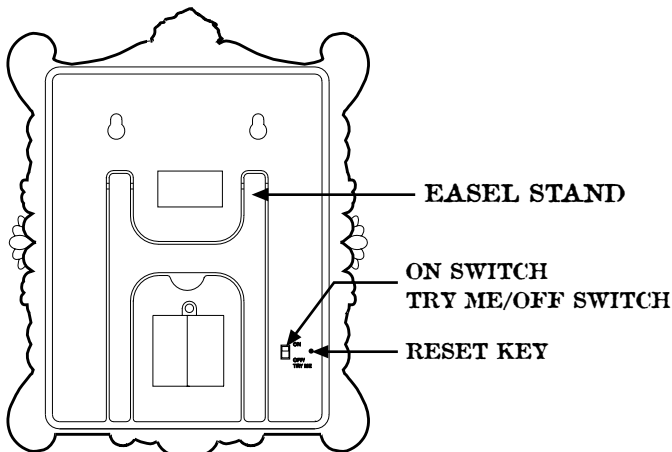
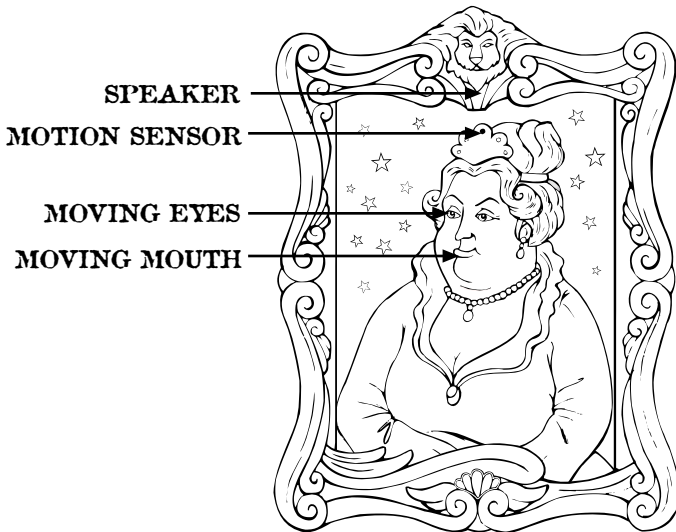
INSTRUCTION



1 MESSAGE TO PARENTS

Thank you for bringing the Talking Portrait Animated Room Alarm into your home.

The Talking Portrait Animated Room Alarm will protect your room from unwanted intruders - keeping you and your secrets safe! When an unwanted guest enters your room the stars twinkle and the Fat Lady's eyes and mouth move as she speaks, asking intruders for their password or what business they have in your room! She says many of the recognizable phrases from the popular Harry Potter books.



Back of unit

NOTE: Please turn the unit **OFF** when not in use to conserve battery power.

2 INSERTING THE BATTERIES

Important Note: Battery installation should be done by an adult.

1. **TALKING PORTRAIT ANIMATED ROOM ALARM** requires 4 x 1.5V "AA" or "LR6" batteries.
2. The battery compartment is located on the back of the unit.
3. Open the battery compartment door on the individual unit by unfastening screw with a universal Philips" screwdriver (ILLUSTRATION 1).
4. Remove discharged batteries if necessary and insert new batteries according to the diagram provided in the battery compartment (ILLUSTRATION 2).
5. Close the battery compartment door.

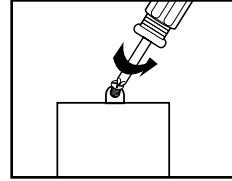


ILLUSTRATION 1

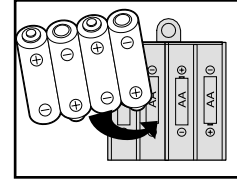


ILLUSTRATION 2



Note: These instructions are also stamped onto the back of the product for future reference.

3 WHEN TO REPLACE BATTERIES

Change the batteries when the lady's voice becomes garbled or seems to be slowing down during play, or when pressing the gold button on the front of the unit and response time is slow.

To ensure proper function:

- Do not mix old and new batteries.
- Do not mix alkaline, standard or rechargeable batteries.
- Battery installation should be done by an adult.
- Non-rechargeable batteries are not to be recharged.
- Rechargeable batteries are to be removed from the toy before being charged (if removable).
- Rechargeable batteries are only to be charged under adult supervision (if removable).
- Only batteries of the same or equivalent type as recommended are to be used.
- Batteries are to be inserted with the correct polarity.
- Exhausted batteries are to be removed from the toy.
- The supply terminals are not to be short-circuited.

WARNING: DO NOT DISPOSE OF BATTERIES IN FIRE. BATTERIES MAY EXPLODE OR LEAK.

4 TAKING CARE OF TALKING PORTRAIT ANIMATED ROOM ALARM

To protect your **TALKING PORTRAIT ANIMATED ROOM ALARM**, follow these instructions:

Prevent spills of food and beverage on the unit.

Do not submerge the product in water. If the product needs to be cleaned, wipe gently with a barely damp, soft cloth.

Do not throw or kick the product, and do not push sharp objects through the speaker openings.

If a part of your game is damaged or something has been left out, **DO NOT RETURN THE GAME TO THE STORE.** The store doesn't have replacement parts. Instead, write to us at:

Tiger Repair Department,
1000 N. Butterfield Road, Unit 1023,
Vernon Hills, IL 60061, U.S.A.

In your note, mention the name of your game, your game's model number, and tell us briefly what the problem is. Also include sales slip, date, place of purchase and price paid. We will do our best to help.

5 HOW TO ACTIVATE YOUR TALKING PORTRAIT ANIMATED ROOM ALARM

To switch off, move the switch to the OFF position.

Hang the Talking Portrait Animated Room Alarm on the wall or place on a desktop by your door. Make sure to use a sturdy wall hanger as unit is heavier than a normal picture frame. If you want to set the unit on your desk or dresser, extend the easel stand on the back of the frame until it is stable.

When the unit is in the TRY ME mode, it only will work if you press the gold button located in the center bottom on the front of the frame. To "activate" the motion sensor, move the switch on the back of the frame to the ON position. The Talking Portrait can detect motion within a range of four feet in front of the frame. When an unwanted guest tries to enter into the room, she will respond by saying phrases, like "Sorry, no password, no entry," or "I see you," to scare them off! The Talking Portrait will say three phrases in a row and then "SLEEP" for 30 seconds before she will detect movement and can be activated again. If you press the gold button during this 30-second SLEEP time, the system will wake up and say three phrases and pause again for another 30-second interval. When the alarm is in the ON position, you can also press the gold button located in the center bottom on the front of the frame to make her talk at your command. While she is talking her mouth and eyes move and the stars twinkle in the background.

IMPORTANT NOTE: The sensor may take a few seconds to start up in a normal indoor area when either the reset key is pressed or the batteries are replaced. The start up time will be longer if the room is dark. The sensor will not function during this time.

If the unit becomes erratic, press the RESET button to reset the unit

6 90-DAY LIMITED WARRANTY

Tiger Electronics (Tiger) warrants to the original consumer purchaser of this product that the product will be free from defects in materials or workmanship for 90 days from the date of original purchase. This warranty does not cover damages resulting from accident, negligence, improper service or use or other causes not arising out of defects in materials or workmanship.

During this 90-day warranty period, the product will either be repaired or replaced (at Tiger's option) without charge to the purchaser, when returned with proof of the date of purchase to either the dealer or to Tiger.

Product returned to Tiger without proof of the date of purchase or after the 90-day warranty period has expired, but prior to one year from the original date of purchase, will be repaired or replaced (at Tiger's option) for a service fee of U.S.\$12.5. Payments must be by check or money order payable to Tiger Electronics.

The foregoing states the purchaser's sole and exclusive remedy for any breach of warranty with respect to the product.

All product returned must be shipped prepaid and insured for loss or damage to:

Tiger Repair Department,
1000 N. Butterfield Road, Unit 1023, Vernon Hills, IL 60061, U.S.A.

The product should be carefully packed in the original box or other packing materials sufficient to avoid damage during shipment. Include a complete written description of the defect, a check if product is beyond the 90-day warranty period, and your printed name, address and telephone number.

THIS WARRANTY IS IN LIEU OF ALL OTHER WARRANTIES AND NO OTHER REPRESENTATIONS OR CLAIMS OF ANY NATURE SHALL BE BINDING ON OR OBLIGATE TIGER IN ANY WAY. ANY IMPLIED WARRANTIES APPLICABLE TO THIS PRODUCT, INCLUDING WARRANTIES OF MERCHANTABILITY AND FITNESS FOR A PARTICULAR PURPOSE, ARE LIMITED TO THE NINETY (90) DAY PERIOD DESCRIBED ABOVE. IN NO EVENT WILL TIGER BE LIABLE FOR ANY SPECIAL, INCIDENTAL, OR CONSEQUENTIAL DAMAGES RESULTING FROM POSSESSION, USE, OR MALFUNCTION OF THIS TIGER PRODUCT.

Some states do not allow limitations as to how long an implied warranty lasts and/or exclusions or limitations of incidental or consequential damages, so the above limitations and/or exclusions of liability may not apply to you. This warranty gives you specific rights, and you may also have other rights which vary from state to state.

This device complies with Part 15 of the FCC Rules. Operation is subject to the following two conditions :

- (1) this device may not cause harmful interference, and
- (2) this device must accept any interference received, including interference that may cause undesired operation.

Warning: Changes or modifications to this unit not expressly approved by the party responsible for compliance could void the user's authority to operate the equipment.

NOTE: This equipment has been tested and found to comply with the limits for a Class B digital device, pursuant to Part 15 of the FCC Rules. These limits are designed to provide reasonable protection against harmful interference in a residential installation. This equipment generates, uses, and can radiate radio frequency energy and, if not installed and used in accordance with the instructions, may cause harmful interference to radio communications. However, there is no guarantee that interference will not occur in a particular installation. If this equipment does cause harmful interference to radio or television reception, which can be determined by turning the equipment off and on, the user is encouraged to try to correct the interference by one or more of the following measures:

- Reorient or relocate the receiving antenna.
- Increase the separation between the equipment and receiver.
- Connect the equipment into an outlet on a circuit different from that to which the receiver is connected.
- Consult the dealer or an experienced radio TV technician for help.

For more information about Tiger Electronics, our products and special promotions, please visit our Web Site at: www.tigertoys.com

TIGER
ELECTRONICS



A division of Hasbro, Inc.
Where Technology Comes to Play!TM

® , TM, & © 2001 Tiger Electronics.
All rights reserved.
980 Woodlands Parkway,
Vernon Hills, IL 60061, USA
www.tigertoys.com

® , TM, & © 2001 Tiger Electronics,
a division of Hasbro, Inc. All Rights Reserved.
Belvedere House, Victoria Avenue, Harrogate,
North Yorkshire HG1 1EL, United Kingdom.
www.tigertoys.co.uk
Printed in China



HARRY POTTER, characters, names
and related indicia are trademarks of
Warner Bros. © 2001.
For more information on Harry Potter
visit www.harrypotter.com
For more information on this specific
product visit www.tigertoys.com

Free Manuals Download Website

<http://myh66.com>

<http://usermanuals.us>

<http://www.somanuals.com>

<http://www.4manuals.cc>

<http://www.manual-lib.com>

<http://www.404manual.com>

<http://www.luxmanual.com>

<http://aubethermostatmanual.com>

Golf course search by state

<http://golfingnear.com>

Email search by domain

<http://emailbydomain.com>

Auto manuals search

<http://auto.somanuals.com>

TV manuals search

<http://tv.somanuals.com>