



# Xenon™ 1902HC

---

Cordless Area-Imaging Scanner for Healthcare

## Quick Start Guide

Aller à [www.honeywellaidc.com](http://www.honeywellaidc.com) pour le français.

Vai a [www.honeywellaidc.com](http://www.honeywellaidc.com) per l'italiano.

Gehe zu [www.honeywellaidc.com](http://www.honeywellaidc.com) für Deutsch.

Ir a [www.honeywellaidc.com](http://www.honeywellaidc.com) para español.

Para Português, acesse [www.honeywellaidc.com.br](http://www.honeywellaidc.com.br).

Перейти на русскоязычный сайт [www.honeywellaidc.com](http://www.honeywellaidc.com).

Pro češtinu jdi na [www.honeywellaidc.com](http://www.honeywellaidc.com).

Pre slovenčinu choď na [www.honeywellaidc.com](http://www.honeywellaidc.com)

日本語： [www.honeywellaidc.com](http://www.honeywellaidc.com) をご覧ください。

如要到中国 [www.honeywellaidc.com](http://www.honeywellaidc.com) (简体)。

查看繁体版请登陆 [www.honeywellaidc.com](http://www.honeywellaidc.com)

한글 [www.honeywellaidc.com](http://www.honeywellaidc.com) 로 이동합니다 .



Crdlss-HC-QS Rev A  
12/14

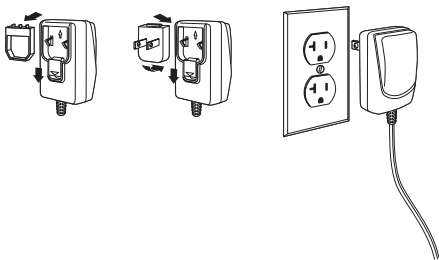
*Note: Refer to your user's guide for information about cleaning your device.*

For localized language versions of this document, go to [www.honeywellaidc.com](http://www.honeywellaidc.com).

## ***Getting Started***

Turn off the computer's power before connecting the base, then power up the computer once the base is fully connected. When the base is connected and powered up, put the scanner in the base to establish a link. The green LED on the base flashes to indicate the scanner's battery is charging.

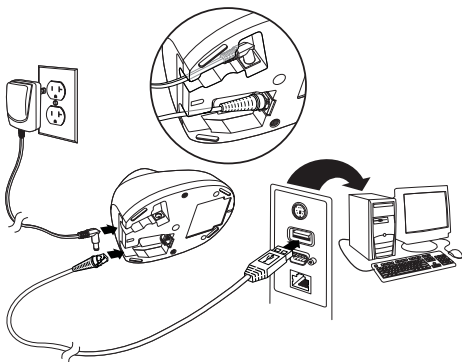
### ***Power Supply Assembly (if included)***



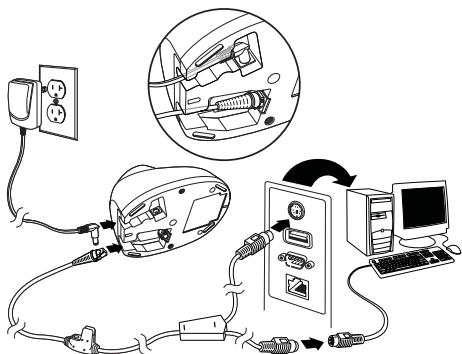
*Note: The power supply must be ordered separately, if needed.*

## **Connecting the Scanner**

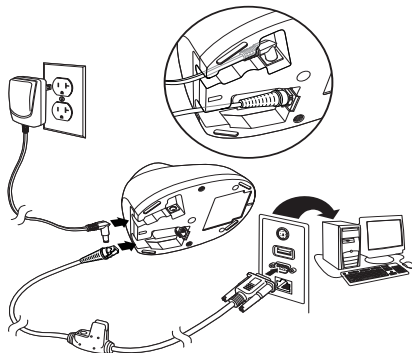
### **USB:**



### **Keyboard Wedge:**



## ***RS232 Serial Port:***



## ***Reading Techniques***

The view finder projects an aiming beam that should be centered over the bar code, but it can be positioned in any direction for a good read.

Hold the scanner over the bar code, pull the trigger, and center the aiming beam on the bar code.

The aiming beam is smaller when the scanner is closer to the code and larger when it is farther from the code. Hold the scanner close to smaller bar codes, and farther away from large bar codes to get a proper read.

If the bar code is highly reflective (e.g., laminated), you may need to tilt the scanner at an angle so the bar code can be scanned.



*Note: If the scanner beeps 3 times when scanning a bar code, the link has not been established. If the scanner beeps once, the link has been established.*

## **Standard Product Defaults**

The following bar code resets all standard product default settings.



Standard Product Defaults

## **USB Serial**

Scan the following code to program the scanner to emulate a regular RS232-based COM Port. If you are using a Microsoft® Windows® PC, you will need to download a driver from the Honeywell website ([www.honeywellaidc.com](http://www.honeywellaidc.com)). The driver will use the next available COM Port number. Apple® Macintosh computers recognize the scanner as a USB CDC class device and automatically use a class driver.



USB Serial

*Note: No extra configuration (e.g., baud rate) is necessary.*

## **USB PC Keyboard**

Scan the following code to program the scanner for a USB PC Keyboard.



USB PC Keyboard

## ***Epic***

Scan the following bar code to configure your device to communicate with an Epic software application.



EMR Application

After scanning this code, you must put the scanner into the base or scan the linking bar code on the base or Access Point to relink your scanner.

## ***Meditech®***

Scan the following bar code to configure your device to communicate with a Meditech software application.



Meditech Application

After scanning this code, you must put the scanner into the base or scan the linking bar code on the base or Access Point to relink your scanner.

## ***Quiet Operations***

The following codes configure the scanner and base to quiet modes for scanning that does not disturb resting patients.

### ***Silent Mode with Flashing LED***

Scan the following bar code to completely silence the base and scanner. When a bar code is scanned, the LED and aimer flash 5 times. Green indicates a good scan, red indicates a bad scan.



Silent Mode with Flashing LED

### ***Silent Mode with Long LED***

Scan the following bar code to completely silence the base and scanner. When a bar code is scanned, the LED and aimer remain solidly lit for 1 second. Green indicates a good scan, red indicates a bad scan.



Silent Mode with Long LED

### ***Very Low Beeper (Nighttime Mode)***

The following bar code silences the base, and sets the scanner for a very low beep when reading bar codes. After scanning this code, the base beep, base and scanner power up beep, and scanner linking sounds are all silenced. When a bar code is scanned, the scanner emits a very soft beep.



Nighttime Mode

### ***Low Beeper (Daytime Mode)***

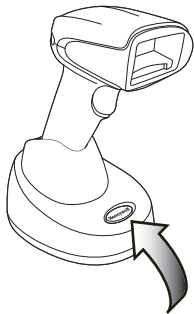
Scan the following bar code to set all sounds to on, but at a low volume. The scanner beep, base beep, base and scanner power up beep, and scanner linking sounds are all set to low volume.



Daytime Mode



## ***Page Button***



The page button on the base is used to page your scanner or to put it into Temporary Streaming Presentation mode. When the scanner is out of the base, press the page button once to make the scanner beep so you can locate it. Press the scanner's trigger to stop the page beeping. When the scanner is in the base, press the page button once and the scanner shines the aimer until a bar code is presented to it. If the scanner doesn't see a bar code in 10 seconds, the aimer shuts off.

## **Suffix**

If you want a carriage return after the bar code, scan the **Add CR Suffix bar code**. To add a tab after the bar code, scan the **Add Tab Suffix bar code**. Otherwise, scan the **Remove Suffix bar code** to remove the suffixes.



Add CR Suffix



Add Tab Suffix



Remove Suffix

## **Add Code ID Prefix to all Symbologies**

Scan the following bar code if you wish to add a Code ID prefix to all symbologies at once.



Add Code ID Prefix To All Symbologies  
(Temporary)

*Note: For a complete list of Code IDs, see the User's Guide for your product at our website, [www.honeywellaidc.com](http://www.honeywellaidc.com).*

## ***Locked Link***

If you link a scanner to a base using the Locked Link Mode, other scanners are blocked from being linked if they are inadvertently placed into the base. If you do place a different scanner into the base, it will charge the scanner, but the scanner will not be linked.



Locked Link Mode  
(Single Scanner)

To use a different scanner, you need to unlink the original scanner by scanning the **Unlink Scanner** bar code.

## ***Override Locked Scanner***

If you need to replace a broken or lost scanner that is linked to a base, scan the **Override Locked Scanner** bar code with a new scanner, and place that scanner in the base. The locked link will be overridden; the broken or lost scanner's link with the base will be removed, and the new scanner will be linked.



Override Locked Scanner

## ***Unlinking the Scanner***

If the base has a scanner linked to it, that scanner must be unlinked before a new scanner can be linked. Once the previous scanner is unlinked, it will no longer communicate with the base. Scan the **Unlink Scanner** bar code to unlink a scanner.



Unlink Scanner

## ***Keyboard Country***

Scan the appropriate country code below to program the keyboard layout for your country or language. As a general rule, the following characters are supported, but need special care for countries other than the United States:

@ | \$ # { } [ ] = / ' \ < > ~



USA (Default)



Belgium



Denmark



Finland



France



Germany/Austria



Great Britain



Italy



Norway



Spain



Switzerland

*Note: For a complete list of country codes, see the User's Guide for your product at our website, [www.honeywellaidc.com](http://www.honeywellaidc.com).*

## ***EZConfig-Scanning***

To access additional features for the scanner use EZConfig-Scanning, an online configuration software tool, available from our website at [www.honeywellaidc.com](http://www.honeywellaidc.com).

## ***Technical Assistance***

Contact information for technical support, product service, and repair can be found at [www.honeywellaidc.com](http://www.honeywellaidc.com).

## ***Limited Warranty***

Refer to [www.honeywellaidc.com/warranty\\_information](http://www.honeywellaidc.com/warranty_information) for your product's warranty information.

## ***Patents***

For patent information, refer to [www.hsmpats.com](http://www.hsmpats.com).

## ***User Documentation***

For localized versions of this document, and to download the User's Guide, go to [www.honeywellaidc.com](http://www.honeywellaidc.com).

## ***Disclaimer***

Honeywell International Inc. ("HII") reserves the right to make changes in specifications and other information contained in this document without prior notice, and the reader should in all cases consult HII to determine whether any such changes have been made. The information in this publication does not represent a commitment on the part of HII.

HII shall not be liable for technical or editorial errors or omissions contained herein; nor for incidental or consequential damages resulting from the furnishing, performance, or use of this material. HII disclaims all responsibility for the selection and use of software and/or hardware to achieve intended results.

This document contains proprietary information that is protected by copyright. All rights are reserved. No part of this document may be photocopied, reproduced, or translated into another language without the prior written consent of HII.

© 2014 Honeywell International Inc. All rights reserved.

Web Address: [www.honeywellaidc.com](http://www.honeywellaidc.com)





## Free Manuals Download Website

<http://myh66.com>

<http://usermanuals.us>

<http://www.somanuals.com>

<http://www.4manuals.cc>

<http://www.manual-lib.com>

<http://www.404manual.com>

<http://www.luxmanual.com>

<http://aubethermostatmanual.com>

Golf course search by state

<http://golfingnear.com>

Email search by domain

<http://emailbydomain.com>

Auto manuals search

<http://auto.somanuals.com>

TV manuals search

<http://tv.somanuals.com>